

Missouri Department of Social Services  
Division of Family Services



Annual Report  
Fiscal Year 2005

Research and Evaluation Unit  
March 2006

---

---

**Intensive In-home Services**

**Annual Report**

**Fiscal Year 2005**

**Missouri Department of Social Services**

---



**MATT BLUNT**  
GOVERNOR

**MISSOURI**  
**DEPARTMENT OF SOCIAL SERVICES**  
**CHILDREN'S DIVISION**  
P.O. BOX 88  
JEFFERSON CITY, MO 65103  
TELEPHONE: 573-522-8024

**Relay Missouri**  
for hearing and speech impaired  
TEXT TELEPHONE  
1-800-735-2966  
VOICE  
1-800-735-2466

March 9, 2006

Dear Reader:

The Children's Division is pleased to present the *Intensive In-home Services Annual Report for Fiscal Year 2005*. Material in this report covers service program activities during State Fiscal Year 2005 (July 1, 2004 through June 30, 2005).

This report has been designed to inform you about Intensive In-home Services in Missouri. It includes information on children and families referred, served, and exiting Intensive In-home Services during this period. We hope that the information will be useful to all who are interested in the accomplishments of Intensive In-home Services in Missouri. Every graph or chart reflects a Missouri family or child served through this important program. It shows Missouri's commitment in keeping children safely at home. We want to thank all staff both public and private, who has made this program work. Any questions regarding this report should be directed to the Children's Division or the Research and Evaluation Unit, both located within the Department of Social Services.

Sincerely,

Paula Neese, Interim Director  
Children's Division

PN/cb

---

---

## *Table of Contents*

<b>Part I - Intensive In-home Services Overview .....</b>	<b>3</b>
Introduction .....	4
Families and Children Accepted .....	4
Families and Children Not Accepted .....	5
Referral Source for Accepted Families .....	5
Head of Household Characteristics of Families Accepted .....	6
At-risk Children Characteristics of Families Accepted .....	9
Prior Contacts .....	12
Response Time .....	12
Total Weeks of Intervention .....	13
Families and At-risk Children Exiting .....	13
Outcomes .....	14
<b>Part II - Appendices (Site and County Summaries) .....</b>	<b>21</b>
Appendix A. Families and Children Accepted/Not Accepted into Intensive In-home Services During Fiscal Year 2005 .....	22
Appendix B. Reasons At-risk Children Not Accepted During Fiscal Year 2005 .....	24
Appendix C. Families Accepted During Fiscal Year 2005 by Referral Source Code .....	26
Appendix D. Head of Household Age For Families Accepted During Fiscal Year 2005 .....	28
Appendix E. Head of Household Gender For Families Accepted During Fiscal Year 2005 .....	30
Appendix F. Head of Household Race For Families Accepted During Fiscal Year 2005 .....	32
Appendix G. Head of Household Employment For Families Accepted During Fiscal Year 2005 .....	36

---

---

## *Table of Contents (continued)*

Appendix H.	
Head of Household Income For Families Accepted During Fiscal Year 2005 .....	38
Appendix I.	
Age of At-risk Children Accepted During Fiscal Year 2005 .....	42
Appendix J.	
Gender of At-risk Children Accepted During Fiscal Year 2005 .....	44
Appendix K.	
Race of At-risk Children Accepted During Fiscal Year 2005 .....	46
Appendix L.	
At-risk Children Accepted During Fiscal Year 2005 by Special Education Category .....	50
Appendix M.	
At-risk Children Accepted During Fiscal Year 2005 by Planned Placement Prevented .....	52
Appendix N.	
Exit Status of Families Exiting Intensive In-home Services During Fiscal Year 2004 .....	54
Notes .....	56

---

# *Part I*

## *Intensive In-home Services Statewide Overview*

---

---

## ***Introduction***

### **The IIS Program**

Missouri families in crisis can receive help from Intensive In-home Services (IIS) when faced with the removal of a child or children from their home. Removal of children is sometimes necessary due to problems such as child abuse and neglect, family violence, drug dependency, delinquency, or other crisis circumstances. IIS offers intensive, short-term, home-based, crisis intervention services with the goal of keeping families safely together whenever possible. IIS services are flexible and can be provided anytime based on the family's needs. Trained primary specialists from either the Children's Division or contracted vendors help families with skill-based interventions such as individual and family counseling, parenting education, child development training, household maintenance education, nutritional training, job readiness training, as well as other community resources.

### ***Families and Children Accepted***

Each family accepted into IIS is represented by a *head of household*. The children identified as at-risk for out-of-home placement are referred to as *at-risk children*.

During state fiscal year 2005 (July 1, 2004-June 30, 2005), the number of at-risk children accepted into IIS was 3,375. The total number of families accepted into IIS was 1,728 and the total number of children, including at-risk children, was 4,370. On average, families accepted into IIS were comprised of 2.5 total children and 2 at-risk children (Appendix A).

#### **Intensive In-home Services During Fiscal Year 2005 Families and Children Accepted By Month**

	<b><u>Families</u></b>	<b><u>At-risk Children</u></b>	<b><u>Not At-risk Children</u></b>	<b><u>Total Children</u></b>
July 2004	136	291	72	363
August 2004	165	320	59	379
September 2004	163	321	93	414
October 2004	131	231	62	293
November 2004	129	246	82	328
December 2004	128	251	100	351
January 2005	160	293	102	395
February 2005	129	250	67	317
March 2005	178	352	109	461
April 2005	140	274	94	368
May 2005	133	255	84	339
June 2005	136	291	71	362
<b>State Total</b>	<b>1,728</b>	<b>3,375</b>	<b>995</b>	<b>4,370</b>

## ***Families and Children Not Accepted***

The 1,218 families not accepted for IIS during FY 2005 included 2,178 at-risk children (Appendices A and B). The most common reason (36%) that at-risk children were not accepted into IIS was due to lack of openings into the program with the children remaining at home.

<b>Intensive In-home Services During Fiscal Year 2005</b>		
<b>Reasons At-risk Children Not Accepted</b>		
	<b><u>Number</u></b>	<b><u>Percent</u></b>
No Opening in IIS-Child at Home	793	36.41%
Child's Safety Cannot be Assured	361	16.57%
No Immediate Likelihood of Placement	249	11.43%
Caretaker Unwilling to Participate	213	9.78%
No Opening in IIS-Child will be Placed	208	9.55%
Referral Source Did Not Follow Through	116	5.33%
Primary Caretaker Unavailable	90	4.13%
Unable to Contact Family	88	4.04%
Child Unwilling to Participate	32	1.47%
Therapist's Safety Cannot Be Assured	14	0.64%
Child is Physically Assaultive	13	0.60%
Child Does Not Meet Age Requirement	1	0.05%
<b>State Total</b>	<b>2,178</b>	<b>100%</b>

## ***Referral Source for Accepted Families***

Referrals for accepted families are more likely to come from the Children's Division (86%) than any other referral source (Appendix C).

<b>Intensive In-home Services During Fiscal Year 2005</b>		
<b>Families Accepted by Referral Source Code</b>		
	<b><u>Number</u></b>	<b><u>Percent</u></b>
DSS CD <sup>1</sup>	1,492	86.34%
Court	55	3.18%
Other	50	2.89%
Self	50	2.89%
Private Mental Health	30	1.74%
DSS DYS <sup>2</sup>	19	1.10%
Law Enforcement	9	0.52%
School System	9	0.52%
DMHCPS Out-Patient <sup>3</sup>	8	0.46%
Family/Friends	4	0.23%
DMHCPS In-Patient <sup>3</sup>	2	0.12%
<b>State Total</b>	<b>1,728</b>	<b>100%</b>

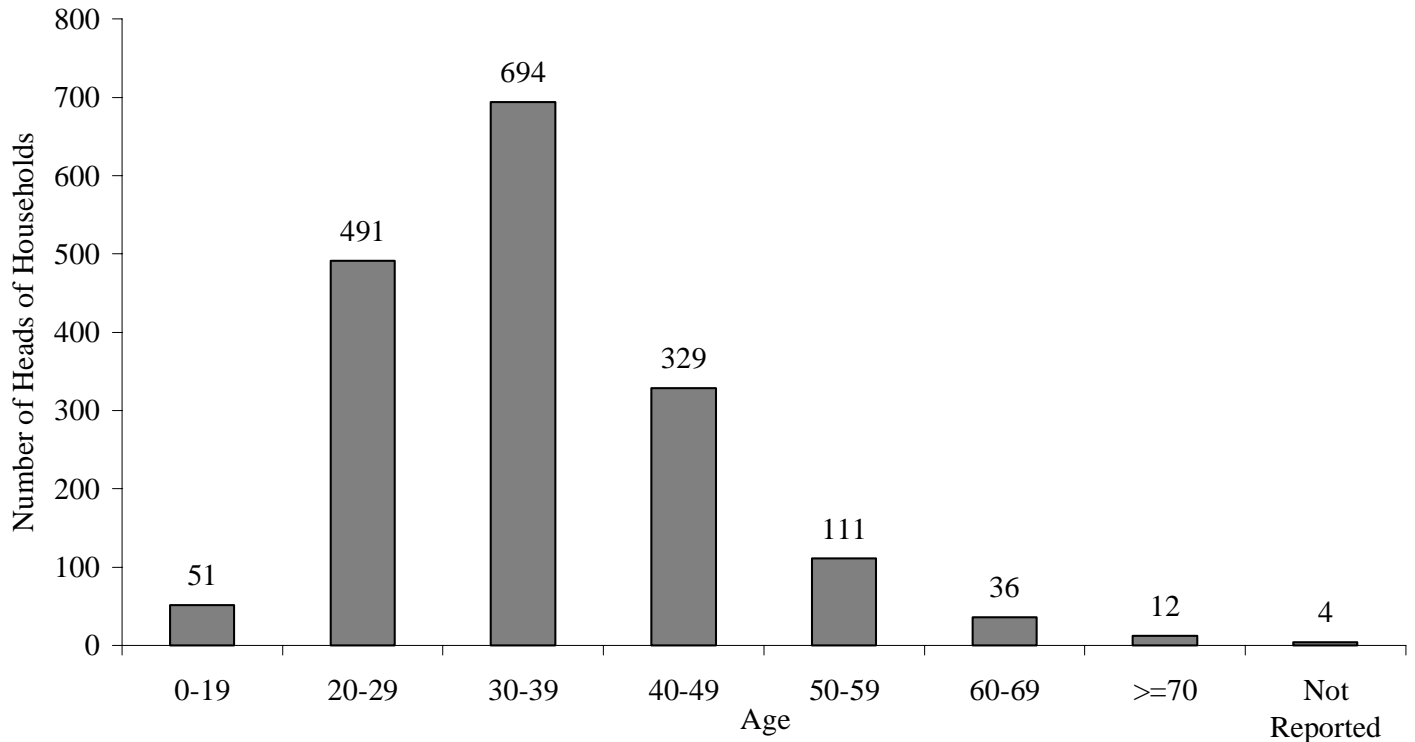
1-Department of Social Services, Children's Division 2-Department of Social Services, Division of Youth Services  
3-Department of Mental Health, Comprehensive Psychiatric Services



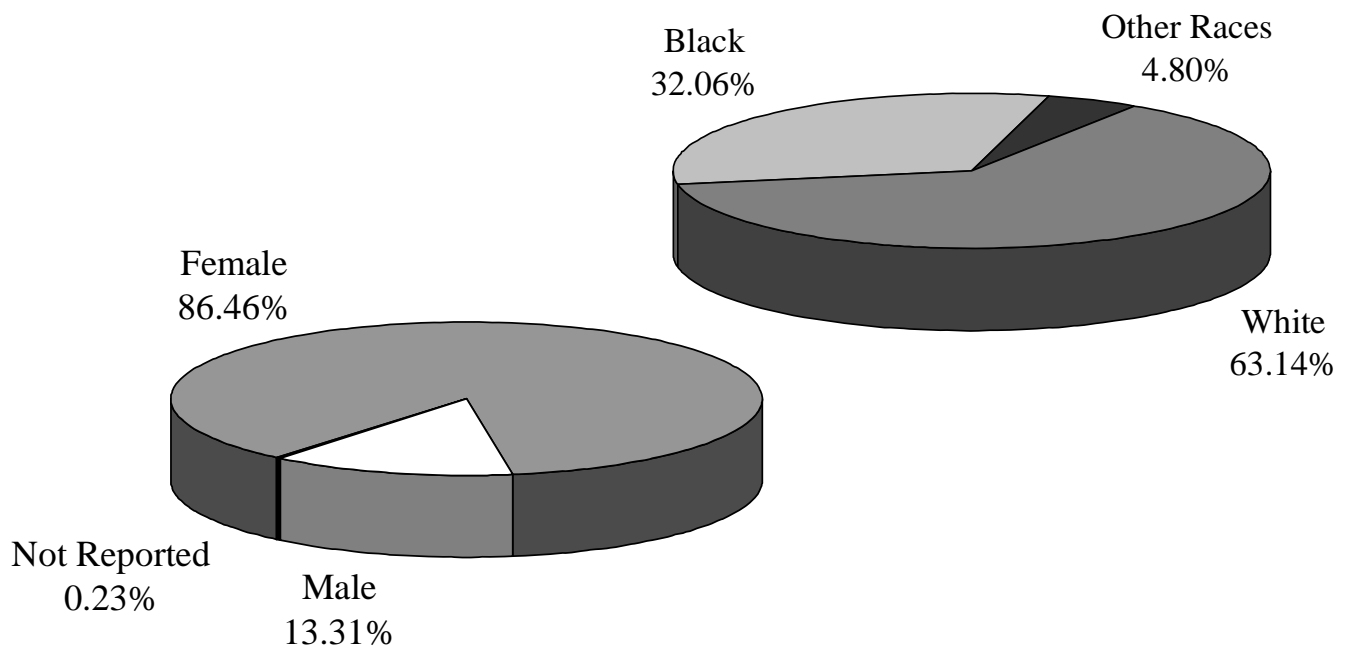
## Head of Household Characteristics of Families Accepted

During FY 2005, the head of household was most likely to be in the age range of 30-39, female and white (Appendix D, Appendix E, and Appendix F).

**Intensive In-home Services During Fiscal Year 2005  
Age of Head of Household**



**Intensive In-home Services During Fiscal Year 2005  
Gender and Race of Head of Household**



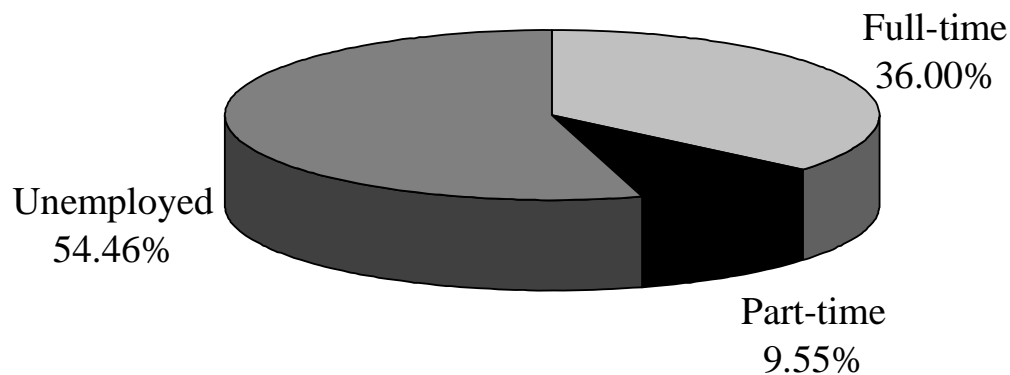
---

---

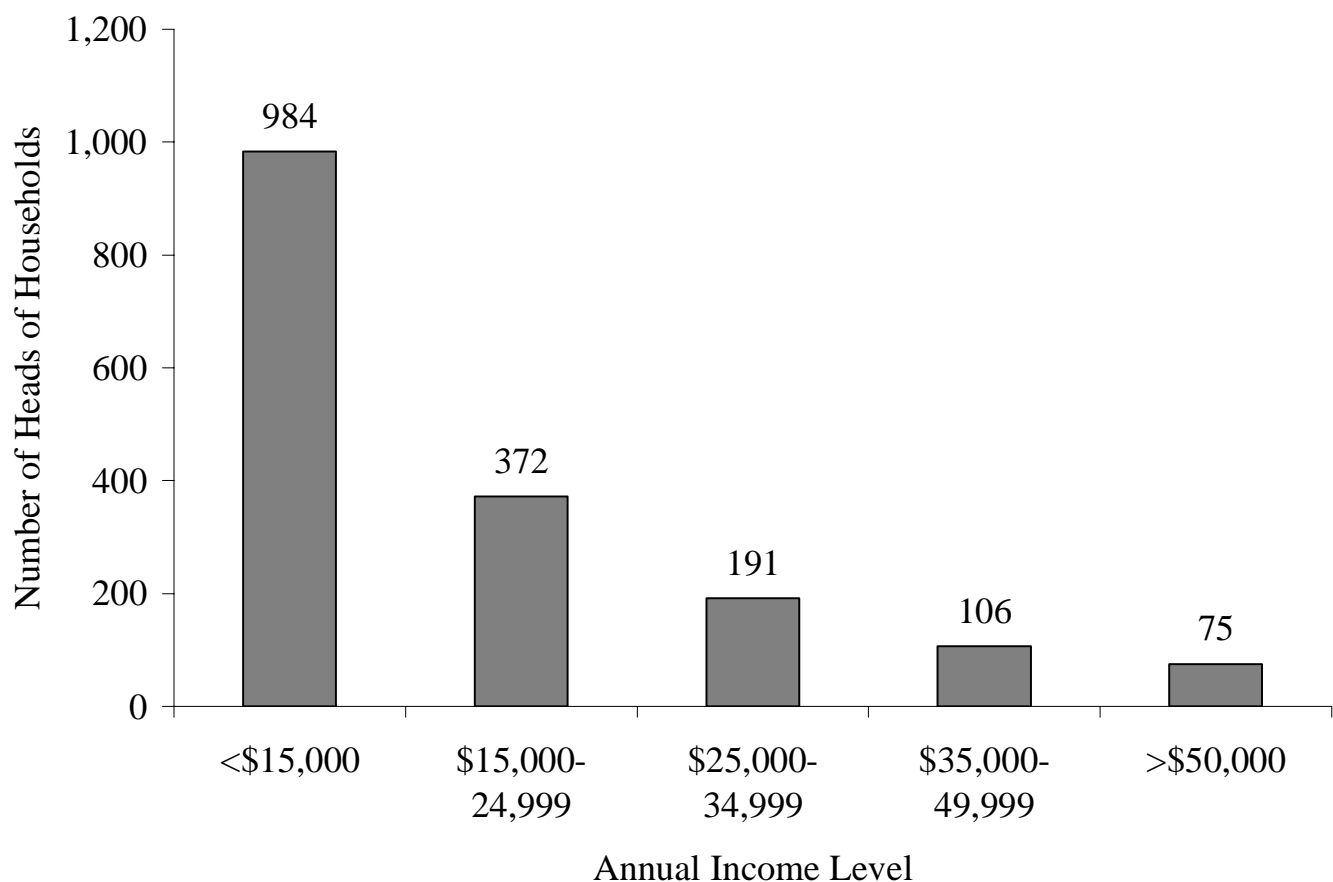
## Head of Household Characteristics of Families Accepted (continued)

Fifty-seven percent of the heads of households earned incomes of less than \$15,000 and 64 percent were either unemployed or only employed part-time (Appendix H and Appendix G).

**Intensive In-home Services During Fiscal Year 2005  
Employment Status of Head of Household**



**Intensive In-home Services During Fiscal Year 2005  
Annual Income Level of Head of Household**



---

---

## *Head of Household Characteristics of Families Accepted (continued)*

Sixty-six percent of the 1,728 heads of households required help with parenting skills problems during FY 2005. The next most frequently addressed head of household problem was parent/child conflict at 39 percent (681) followed by communication at 29 percent (502), child neglect at 23 percent (403), and physical abuse at 20 percent (347).

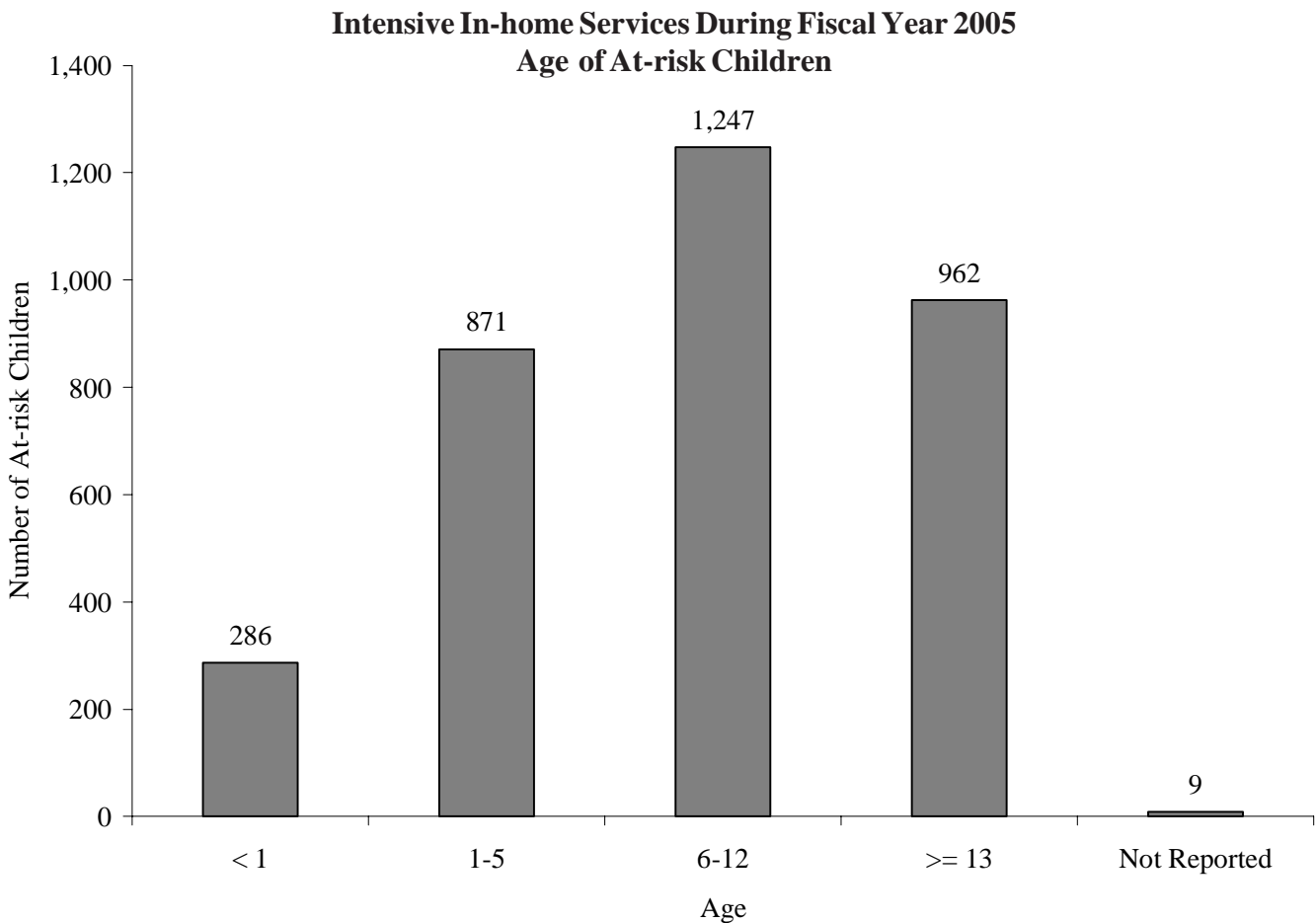
### **Intensive In-home Services During Fiscal Year 2005 Head of Household Problems Addressed**

	<u><b>Number</b></u>	<u><b>Percent*</b></u>
Parenting Skills Problems	1,148	66.44%
Parent/Child Conflict	681	39.41%
Communication	502	29.05%
Child Neglect	403	23.32%
Physical Abuse	347	20.08%
Mental Health Problems	335	19.39%
Emotional Problems	241	13.95%
Other	227	13.14%
School Problems	206	11.92%
Severe Financial Problems	194	11.23%
Shelter	162	9.38%
Delinquent Behavior	140	8.10%
Drug Abuse	139	8.04%
Medical Illness/Disability	127	7.35%
Physical Violence	120	6.94%
Married Conflict	104	6.02%
Alcohol Abuse	75	4.34%
Transportation	65	3.76%
Runaway	57	3.30%
Sexual Abuse	56	3.24%
Developmental Disability	47	2.72%
Criminal Behavior	38	2.20%
Suicide Attempt	24	1.39%
Pregnancy	19	1.10%
Prostitution	2	0.12%

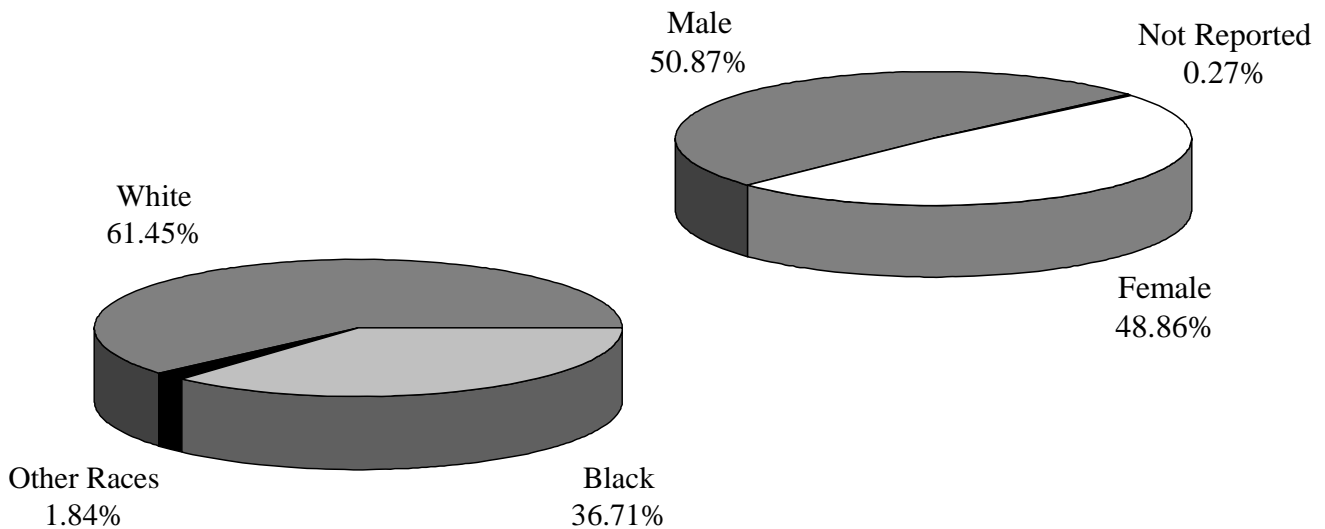
\*Percent is the percentage of total heads of households. Percent total is greater than 100 because a head of household may have up to four problems addressed.

## At-risk Children Characteristics of Families Accepted

During FY 2005, most at-risk children (37%) were six to twelve years old (Appendix I). A slight majority of at-risk children were male, at 51%, versus female at 49%. Sixty-one percent of at-risk children were white, 37% were black and the remaining 2% were other races or not reported (Appendix J and Appendix K).

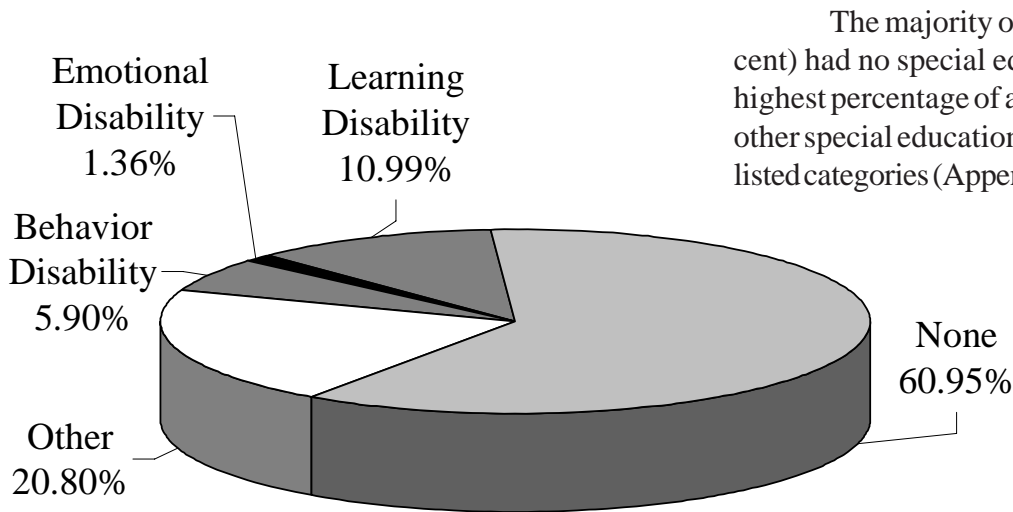


**Intensive In-home Services During Fiscal Year 2005**  
**Sex and Race of At-risk Children**

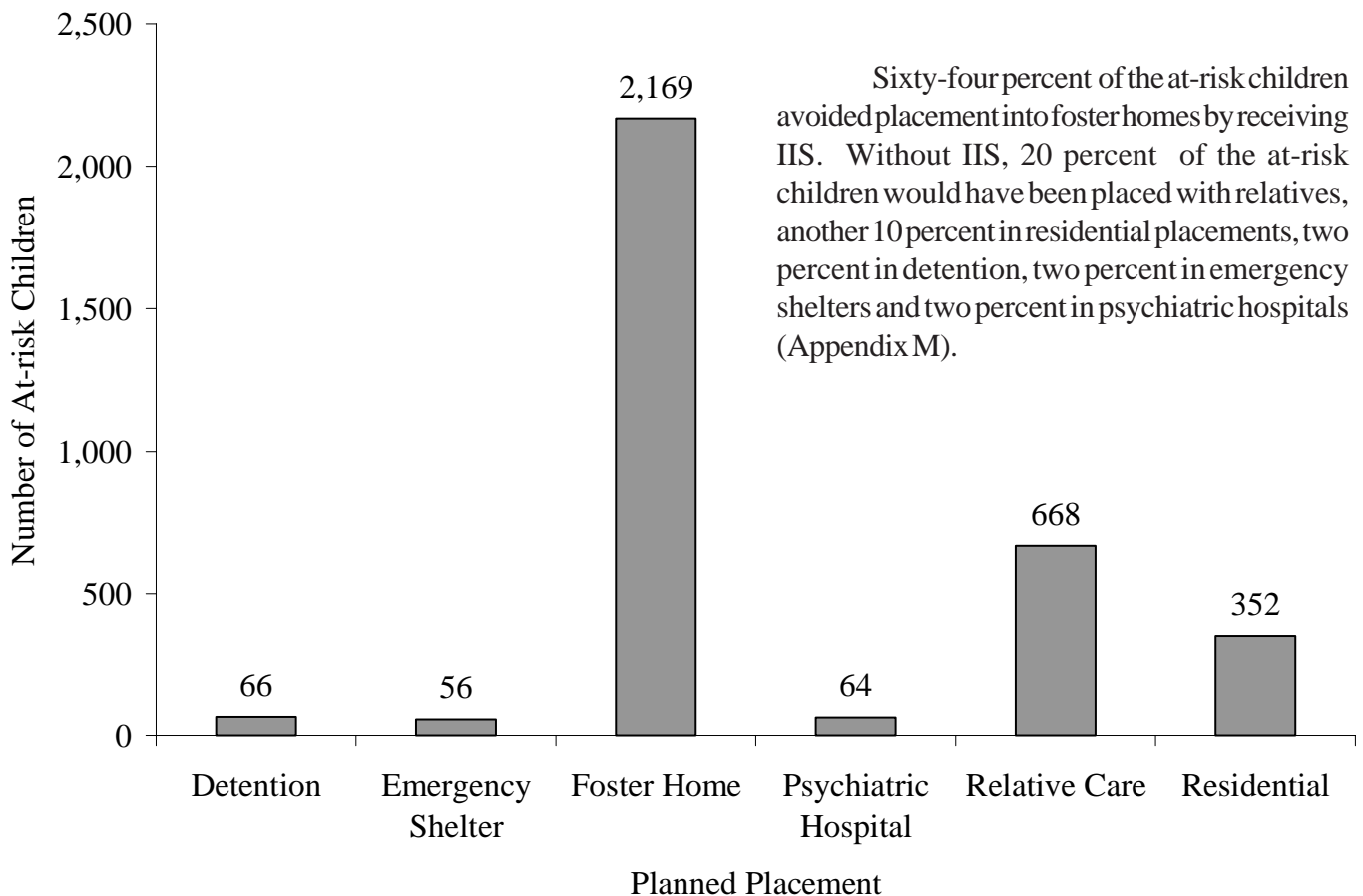


## At-risk Children Characteristics of Families Accepted (continued)

### Intensive In-home Services During Fiscal Year 2005 Special Education Category of At-risk Children



### Intensive In-home Services During Fiscal Year 2005 Planned Placement Prevented of At-risk Children



---

---

## *At-risk Children Characteristics of Families Accepted (continued)*

Thirty-five percent (1,168) of at-risk children had Parent/Child Conflict issues as the most common problem addressed in IIS during FY 2005. The next most common problems addressed were Parenting Skills Problems at 31 percent (1,047) and Child Neglect at 25 percent (838).

### **Intensive In-home Services During Fiscal Year 2005 Problems Addressed on Behalf of At-risk Children**

	<b><u>Number</u></b>	<b><u>Percent*</u></b>
Parent/Child Conflict	1,168	34.61%
Parenting Skills Problems	1,047	31.02%
Child Neglect	838	24.83%
Communication	789	23.38%
Other	648	19.20%
School Problems	615	18.22%
Emotional Problems	505	14.96%
Physical Abuse	480	14.22%
Mental Health Problems	444	13.16%
Delinquent Behavior	366	10.84%
Shelter	322	9.54%
Severe Financial Problems	237	7.02%
Medical Illness/Disability	227	6.73%
Physical Violence	152	4.50%
Drug Abuse	150	4.44%
Sexual Abuse	142	4.21%
Runaway	129	3.82%
Developmental Disability	109	3.23%
Married Conflict	81	2.40%
Alcohol Abuse	68	2.01%
Transportation	59	1.75%
Criminal Behavior	48	1.42%
Suicide Attempt	48	1.42%
Pregnancy	17	0.50%
Prostitution	4	0.12%

\*Percent is the percentage of total at-risk children. Percent total is greater than 100 because an at-risk child may have up to four problems addressed.

## Prior Contacts

Of the 1,728 families accepted into IIS, 926 families had at least one contact with another agency prior to the IIS intervention. Those 926 families had a total of 1,436 prior contacts. Each family can have up to six prior contacts listed. Fifty-five percent of the prior contacts were with the Children's Division, followed by 19% with the Juvenile Court.

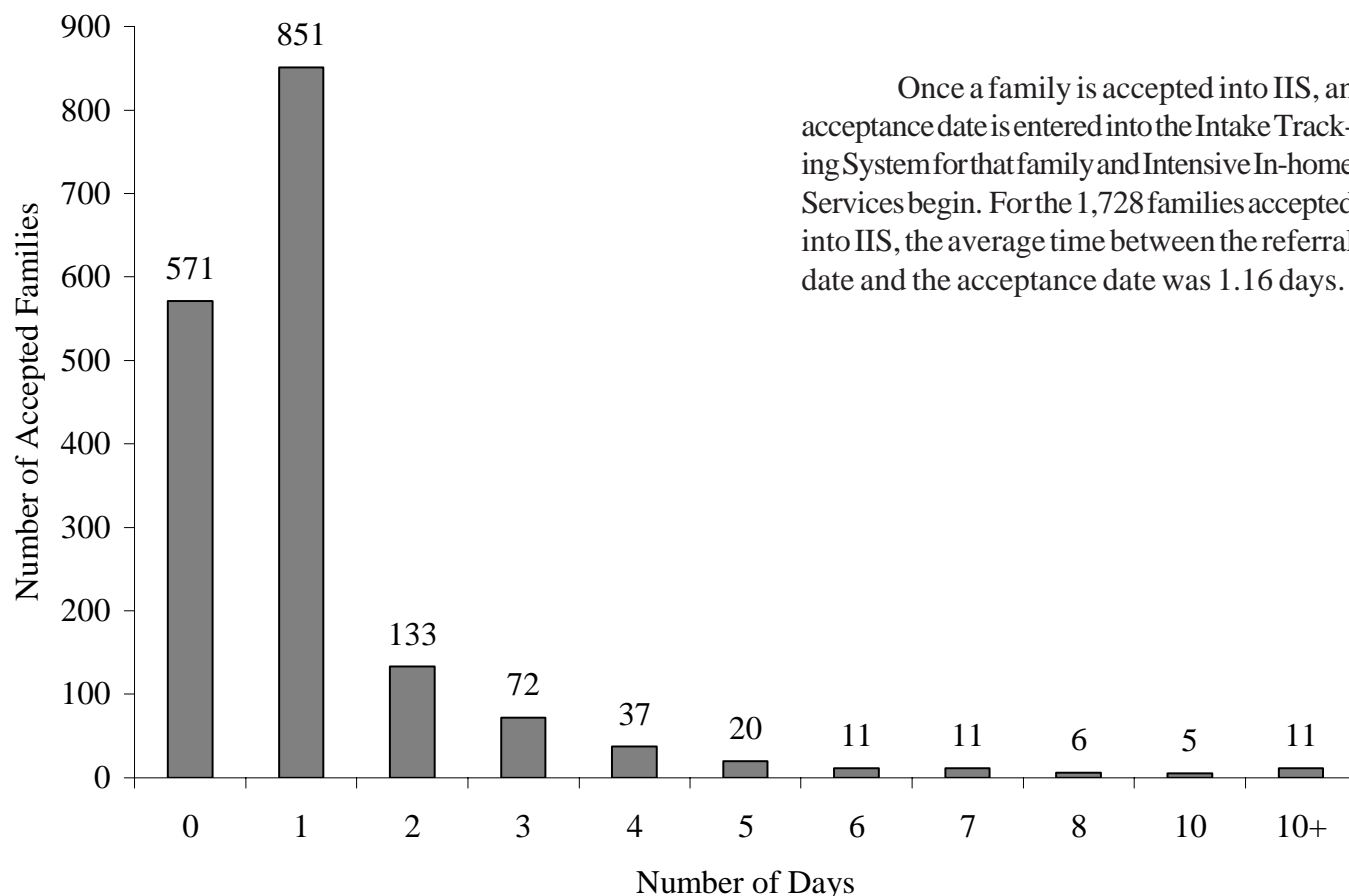
Intensive In-home Services During Fiscal Year 2005 Prior Agency Contacts		
	<u>Number</u>	<u>Percent</u>
DSS CD <sup>1</sup>	789	54.94%
Juvenile Court	267	18.59%
Adult Law Enforcement	191	13.30%
DMH <sup>2</sup>	100	6.96%
Adult Criminal Court	55	3.83%
DSS DYS <sup>3</sup>	34	2.37%
<b>State Total</b>	<b>1,436</b>	<b>100%</b>

1 DSS CD	Department of Social Services, Children's Division
2 DMH	Department of Mental Health
3 DSS DYS	Department of Social Services, Division of Youth Services

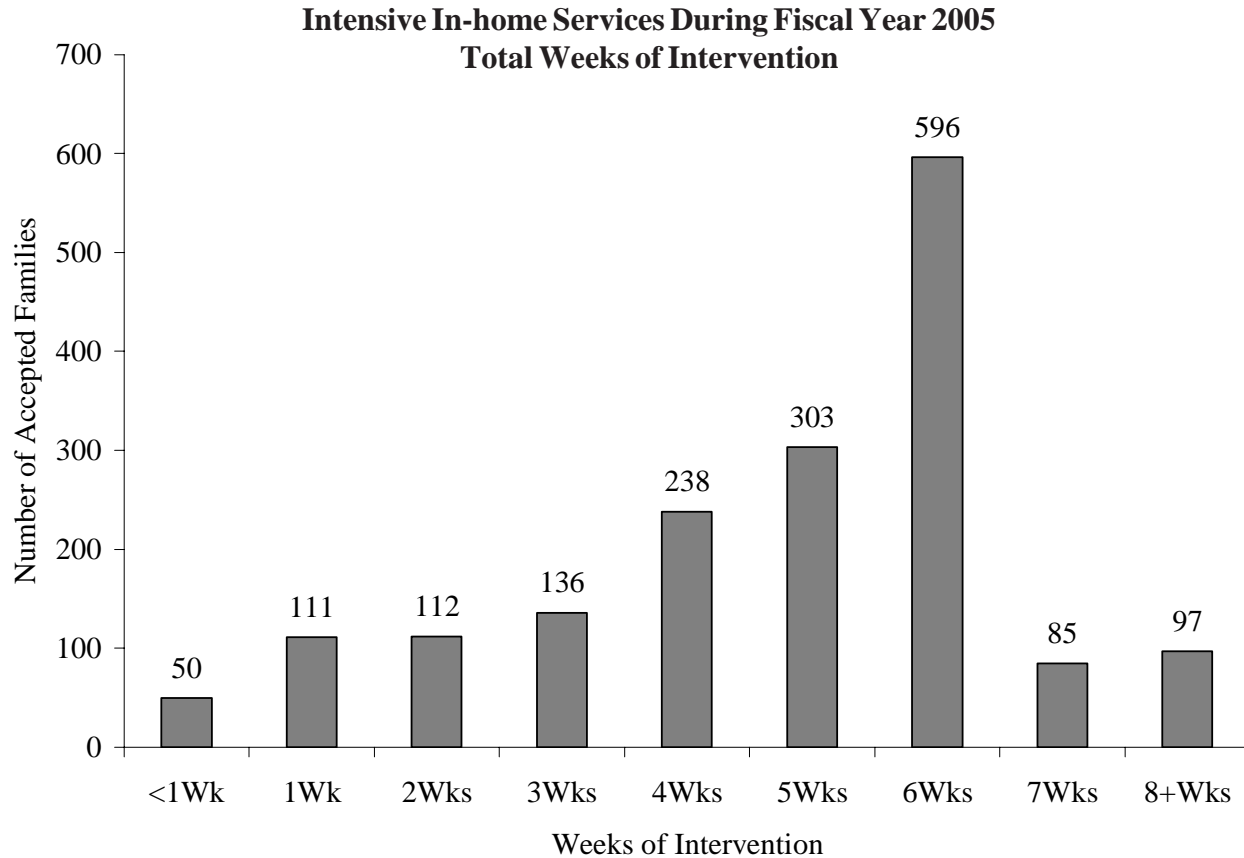
## Response Time

**Intensive In-home Services During Fiscal Year 2005  
Time From Referral Date to Acceptance Date**



## Total Weeks of Intervention

During FY 2005, 89 percent of families exited IIS within six weeks of acceptance into the program. The average length of intervention was 5 weeks.



## Families and At-risk Children Exiting

Families and children who leave IIS during the fiscal year are considered to exit in one of the following categories: family intact, family not intact and other. Families are not intact if one of the following occurs: Child Ran Away, Child Moved Out of Home (not placed), Child Living with Relative or Guardian (not Court Ordered), Child Living with Relative or Guardian (Court Ordered), In Foster Home or Group Home, In Residential Treatment, With Division of Youth Services (DYS), In Juvenile Justice and In In-Patient Psychiatric Diversion. Other includes the following: Can't Locate Family, Information Not Available and Other. During FY 2005, 86 percent (1,478) of 1,712 families and 88 percent (2,973) of 3,360 at-risk children exiting IIS were reported to be in intact families (Appendix N).

**Intensive In-home Services During Fiscal Year 2005  
Status of Families and At-risk Children Exiting**

	<b>Family Intact</b>	<b>Family Not Intact</b>	<b>Other</b>	<b>Total</b>
Families	1,478	218	16	1,712
At-risk Children	2,973	353	34	3,360



## ***Outcomes***

### **Introduction**

The goal of Intensive In-home Services (IIS) is to allow families in crisis to remain safely together. Outcomes can measure how well this goal is met for families after their exit from IIS intervention. Whether or not an at-risk child (ARC) enters Children's Division (CD) alternative care or is listed as a victim of a substantiated child abuse/neglect (CA/N) hotlines are two outcomes.

Children who exited IIS during fiscal years 2001, 2002, 2003 and 2004 were checked to see if they had entered CD custody or if they were listed as a victim of a substantiated CA/N report during IIS intervention up to 48 months of exiting IIS. These past fiscal years were used to give children exiting enough time to see if the events had occurred. FY 2001 is the only fiscal year, at the time of this report, to allow a 48 month follow-up. FY 2002, FY 2003 and FY 2004 have follow-ups of 36, 24 and 12 months, respectively.

The following table gives the number of families and at-risk children who exited IIS during three fiscal years. Each family and child are counted only once. If a family or child were involved in multiple IIS interventions, the exit associated with the lowest intervention number was used.

<u>Fiscal Year</u>	<u>Families</u>	<u>At-risk Children</u>
2001	1,588	3,138
2002	1,644	3,316
2003	1,606	3,139
2004	1,577	3,130

### **ARC Cases by Provider**

Intensive In-home Services are handled either by in-house Children's Division staff or by contracted providers. Contracted providers managed most of the cases for at-risk children exiting during FY 2001, FY 2002, FY 2003 and FY 2004. For example, 75% of the cases of at-risk children exiting during FY 2001 were in contracted caseloads versus 25% in in-house. The number and percentages of cases by provider for each of the four fiscal years are shown in the table below.

<u>Fiscal Year</u>	<u>In-house</u>		<u>Contract</u>		<u>Total Cases</u>
	<u>#</u>	<u>% of Total</u>	<u>#</u>	<u>% of Total</u>	
2001	785	25.02%	2,353	74.98%	3,138
2002	730	22.01%	2,586	77.99%	3,316
2003	645	20.55%	2,494	79.45%	3,139
2004	692	22.11%	2,438	77.89%	3,130

## Outcomes (continued)

### ARC and Children's Division Alternative Care

ARC exiting IIS during each of the four fiscal years were checked to see if they entered alternative care in the months following their exits. If there were multiple entries into LS1 for the ARC, the first entry was used. The following table shows the number of statewide ARC who entered alternative care from during the IIS intervention to 48 months of their exit from IIS. Most of the ARC did not enter Legal Status 1 (LS1) alternative care during or after their IIS intervention as shown in the following chart.

Fiscal Year	No OOH*	During IIS	0<=3 Mths	3<=6 Mths	6<=12 Mths	12<=24 Mths	24<=36 Mths	36<=48 Mths	Children Exiting
2001	2,245	175	207	100	154	138	68	51	3,138
2002	2,481	184	200	111	125	127	88	**	3,316
2003	2,485	140	165	106	118	125	**	**	3,139
2004	2,577	164	189	76	124	**	**	**	3,130

### ARC who Entered LS1 within 48 Months of Exit by Provider

The following charts show the breakout of the entry into LS1 by ARC by either contracted or in-house provider caseload.

Fiscal Year	No OOH*	During IIS	0<=3 Mths	3<=6 Mths	6<=12 Mths	12<=24 Mths	24<=36 Mths	36<=48 Mths	Children Exiting
2001	1,717	116	144	75	116	104	52	29	2,353
2002	1,950	150	145	93	84	103	61	**	2,586
2003	2,031	89	115	91	87	81	**	**	2,494
2004	2,021	123	148	57	89	**	**	**	2,438

Fiscal Year	No OOH*	During IIS	0<=3 Mths	3<=6 Mths	6<=12 Mths	12<=24 Mths	24<=36 Mths	36<=48 Mths	Children Exiting
2001	528	59	63	25	38	34	16	22	785
2002	531	34	55	18	41	24	27	**	730
2003	454	51	50	15	31	44	**	**	645
2004	556	41	41	19	35	**	**	**	692

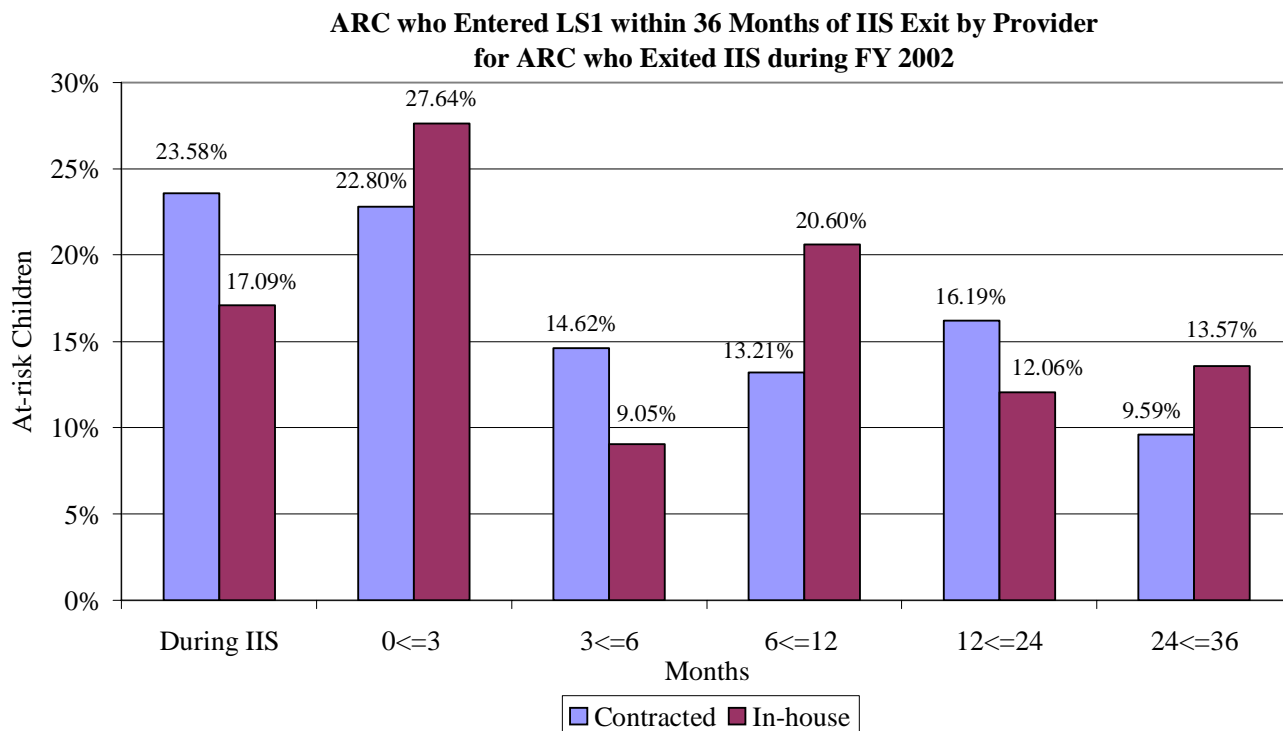
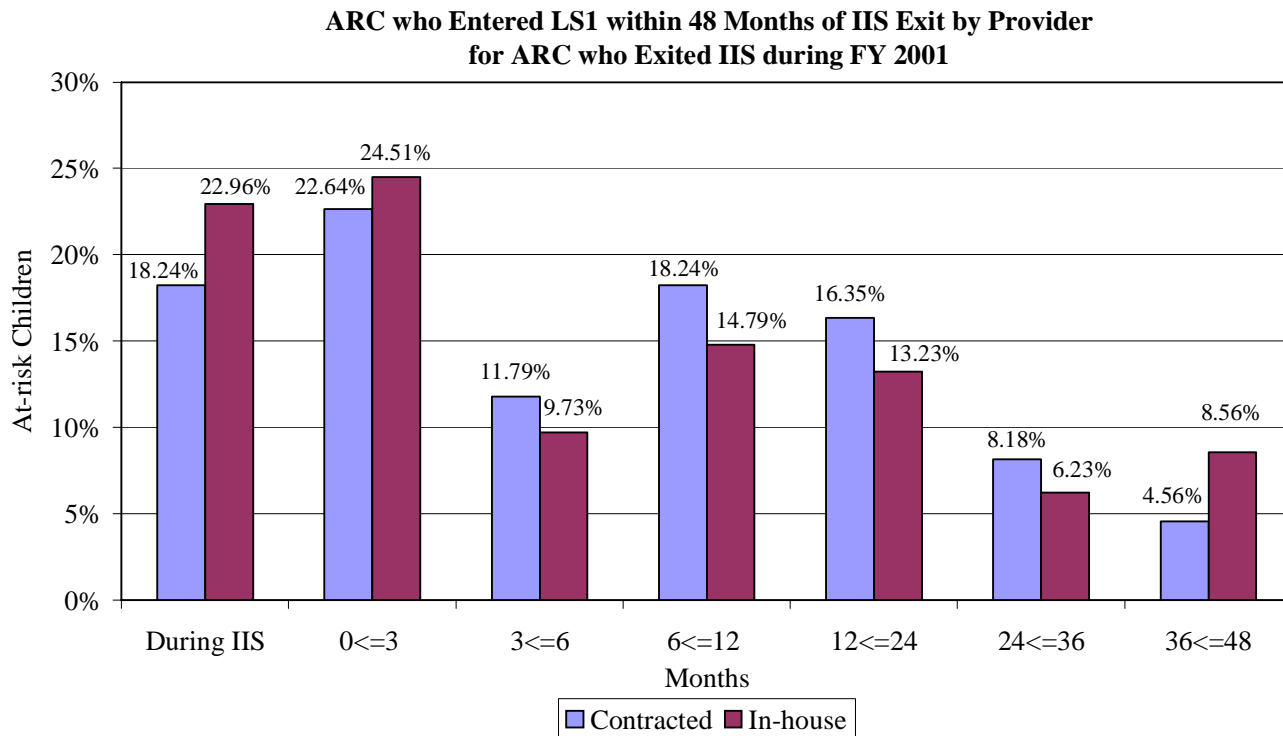
\* OOH -- Out-of-home Placement into Legal Status 1

\*\* Not enough time has elapsed at the time of this report to allow a follow-up in this category

## Outcomes (continued)

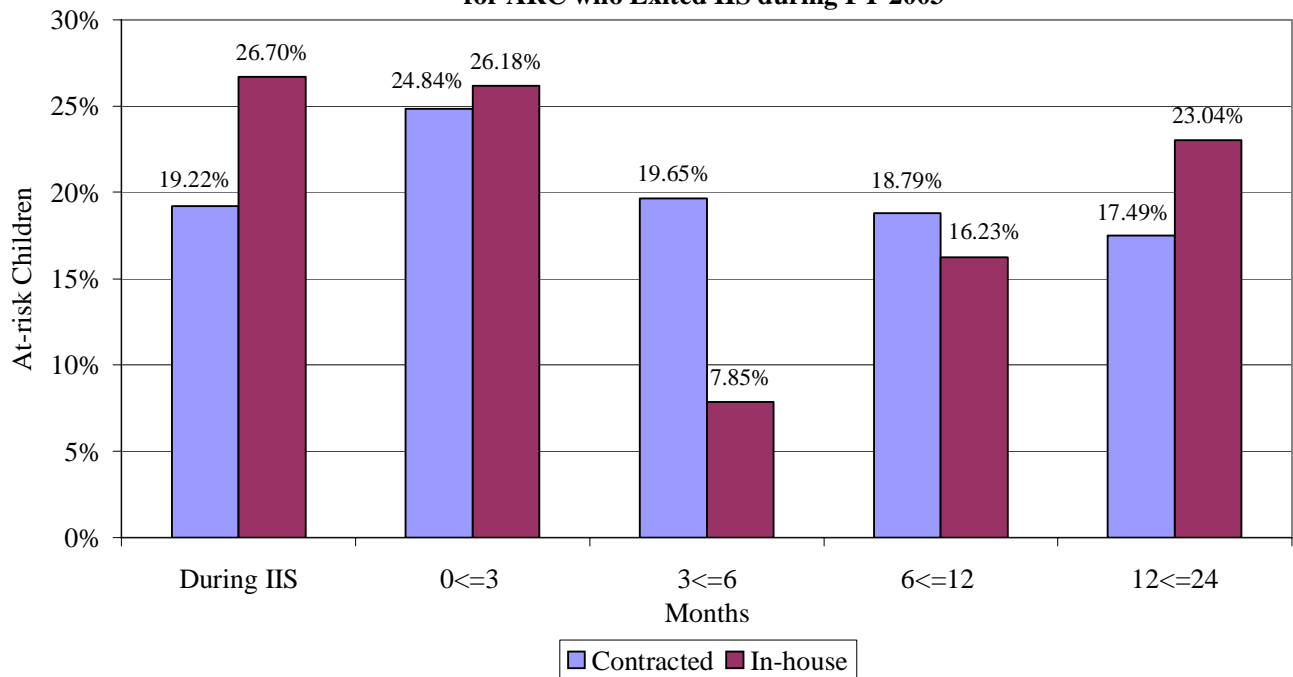
### ARC who Entered LS1 within 48 Months of Exit by Provider

ARC who exited IIS during each of the four fiscal years and entered LS1 were more likely to enter LS1 from the start of the intervention up to three months from the exit, regardless of the provider caseload.

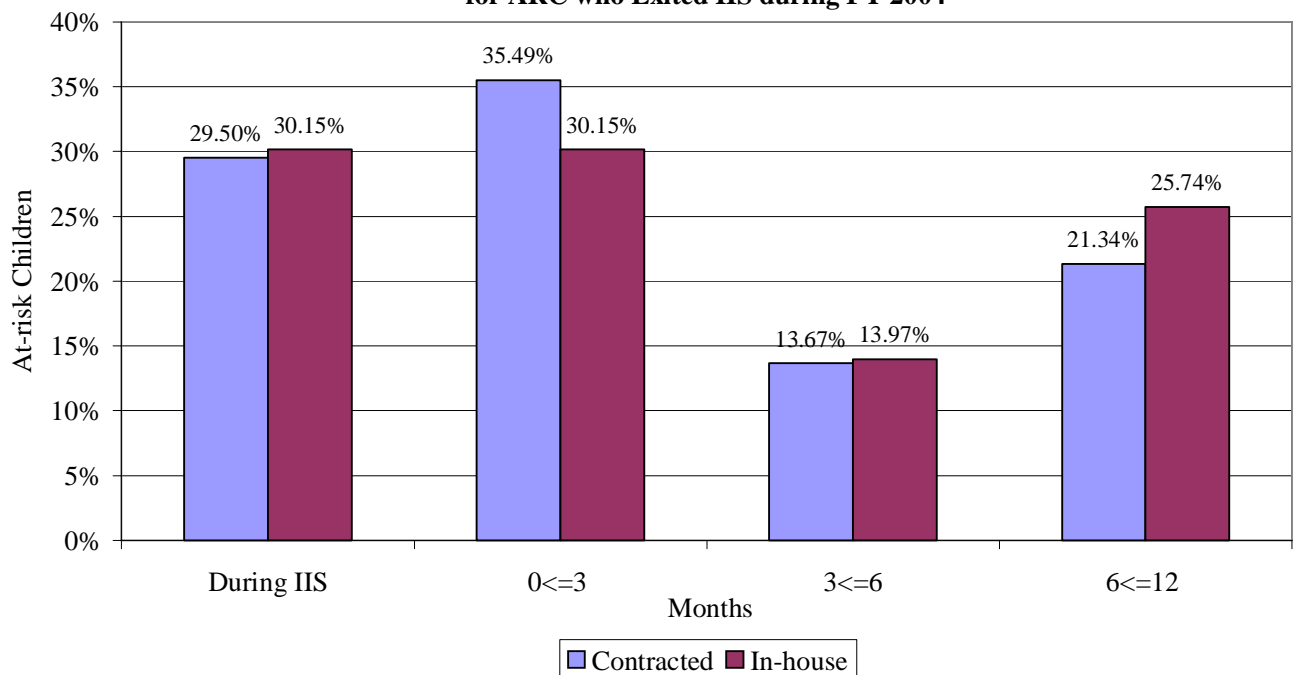


**Outcomes (continued)**

**ARC who Entered LS1 within 24 Months of IIS Exit by Provider for ARC who Exited IIS during FY 2003**



**ARC who Entered LS1 within 12 Months of IIS Exit by Provider for ARC who Exited IIS during FY 2004**



## Outcomes (continued)

### ARC and Child Abuse/Neglect (CA/N) Reports

The ARC exiting IIS during the four fiscal years were checked to see if they were listed as victims in the CA/N system following their IIS intervention. The first substantiated (defined as conclusion 'A' or 'B') CA/N report for the ARC was sought for the time period after the IIS exit.

The following tables show the timeframes for the first substantiated CA/N report. The columns for 'No CA/N' are for children who were not involved in a substantiated CA/N during the timeframes.

<b>ARC with Substantiated CA/N within 48 Months of IIS Exit</b>									
Fiscal Year	No CA/N*	During IIS	0<=3 Mths	3<=6 Mths	6<=12 Mths	12<=24 Mths	24<=36 Mths	36<=48 Mths	Children Exiting
2001	2,608	47	50	61	91	143	84	54	3,138
2002	2,809	89	80	56	79	132	71	**	3,316
2003	2,736	64	65	69	82	123	**	**	3,139
2004	2,803	76	106	60	85	**	**	**	3,130

### ARC listed as Victims in a Substantiated CA/N within 48 Months of Exit by Provider

The following charts show the breakout of the ARC listed as victims in CA/N reports by either contracted or in-house provider caseload.

<b>ARC with Substantiated CA/N within 48 Months of IIS Exit Contracted Providers</b>									
Fiscal Year	No CA/N*	During IIS	0<=3 Mths	3<=6 Mths	6<=12 Mths	12<=24 Mths	24<=36 Mths	36<=48 Mths	Children Exiting
2001	1,963	34	36	43	69	107	65	36	2,353
2002	2,207	73	54	37	59	104	52	**	2,586
2003	2,208	42	30	59	65	90	**	**	2,494
2004	2,215	53	74	35	61	**	**	**	2,438

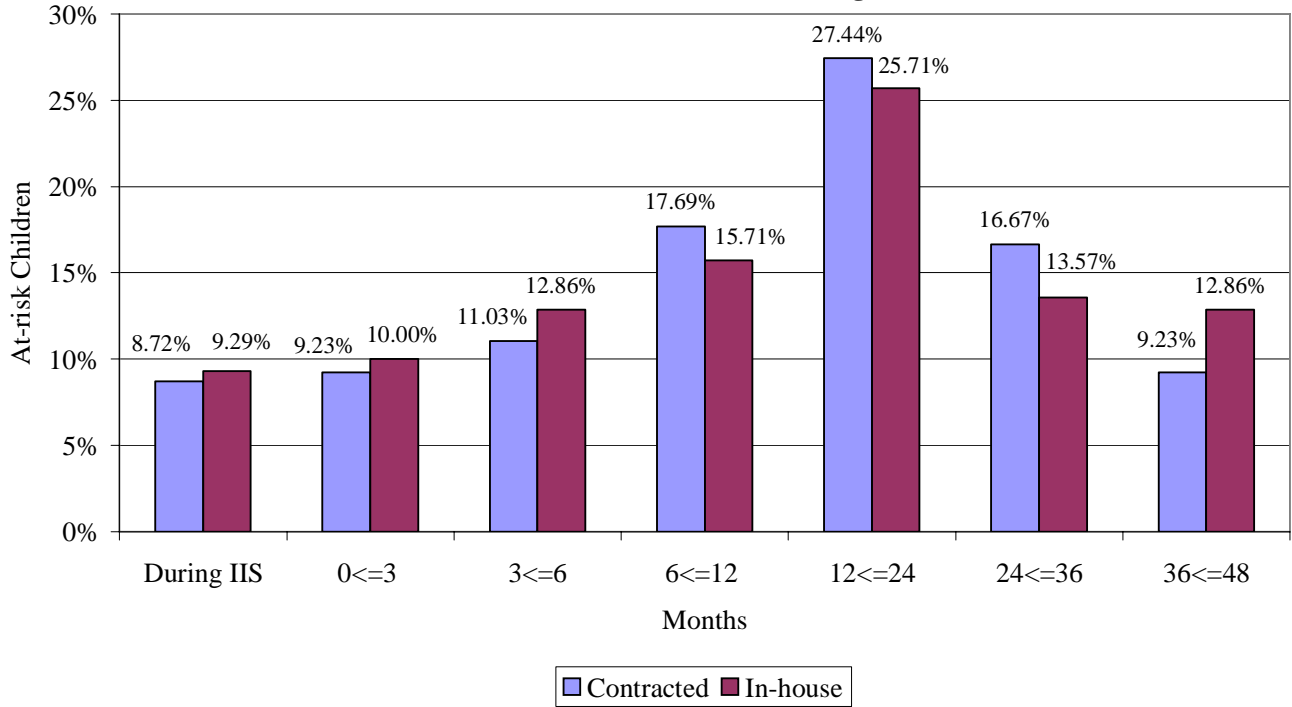
<b>ARC with Substantiated CA/N within 48 Months of IIS Exit In-house Providers</b>									
Fiscal Year	No CA/N*	During IIS	0<=3 Mths	3<=6 Mths	6<=12 Mths	12<=24 Mths	24<=36 Mths	36<=48 Mths	Children Exiting
2001	645	13	14	18	22	36	19	18	785
2002	602	16	26	19	20	28	19	**	730
2003	528	22	35	10	17	33	**	**	645
2004	588	23	32	25	24	**	**	**	692

\* No CA/N -- ARC who were not involved in a substantiated CA/N during the timeframes.

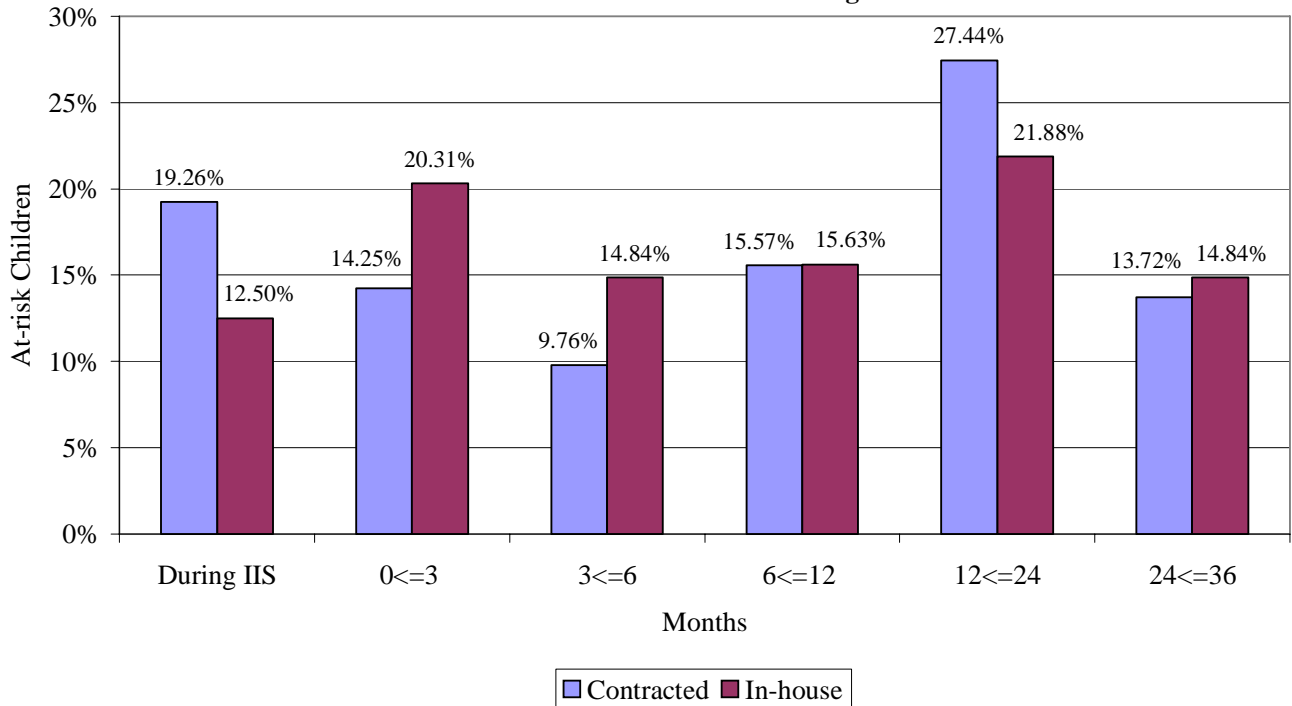
\*\* Not enough time has elapsed at the time of this report to allow a follow-up in this category

**Outcomes (continued)**

**ARC in Substantiated CA/N within 48 Months of IIS Exit by Provider for ARC who Exited IIS during FY 2001**

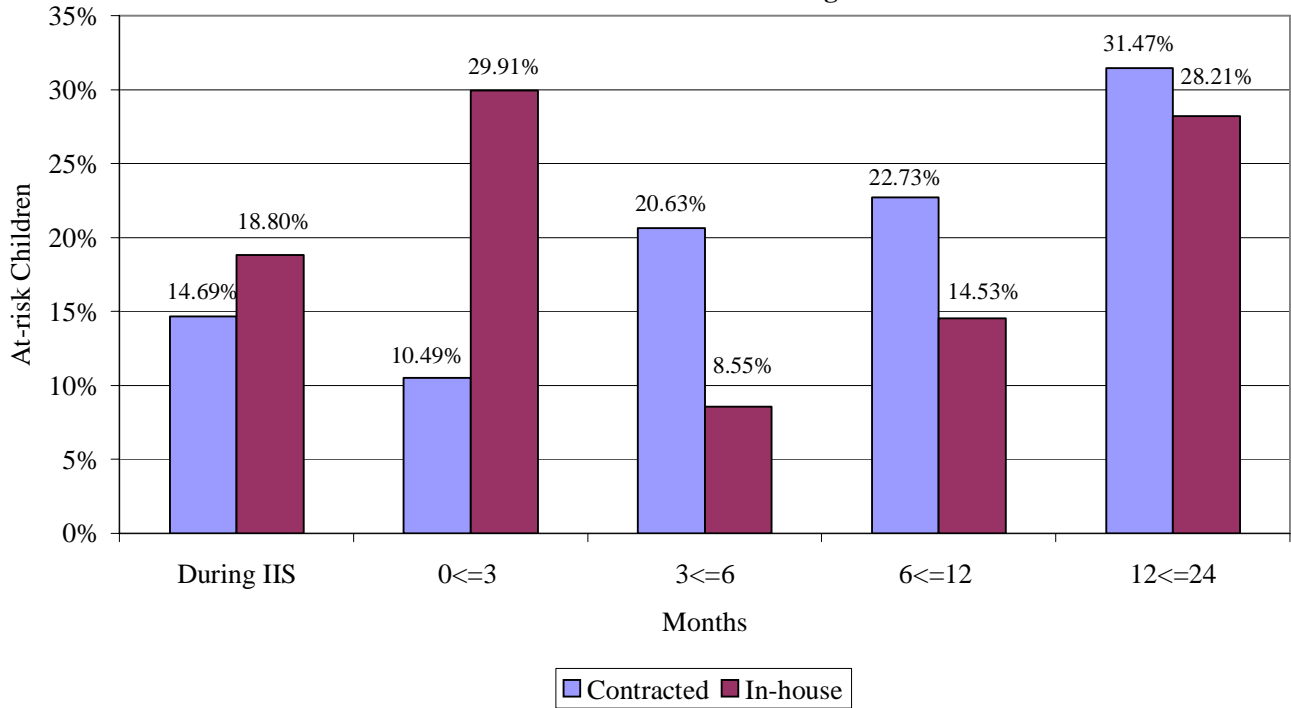


**ARC in Substantiated CA/N within 36 Months of IIS Exit by Provider for ARC who Exited IIS during FY 2002**

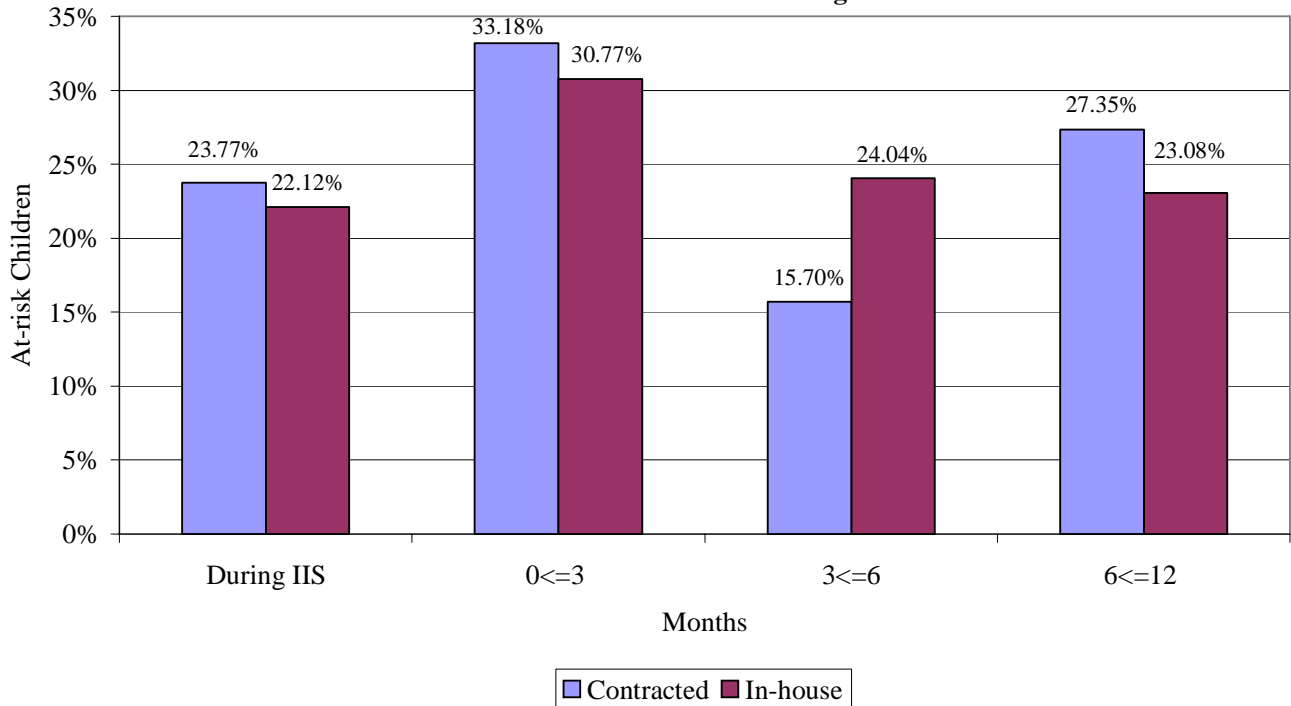


**Outcomes (continued)**

**ARC in Substantiated CA/N within 24 Months of IIS Exit by Provider for ARC who Exited IIS during FY 2003**



**ARC in Substantiated CA/N within 12 Months of IIS Exit by Provider for ARC who Exited IIS during FY 2004**



---

# *Part II*

## *Appendices (Site and County Summaries)*



**Appendix A. Intensive In-home Services**

**Families and Children Accepted/Not Accepted into Intensive In-home Services During Fiscal Year 2005**

SITE	COUNTY	TOTAL FAMILIES ACCEPTED	TOTAL CHILDREN ACCEPTED	AVG.# OF CHILDREN PER FAMILY	AT-RISK CHILDREN ACCEPTED	AVG.# OF AT-RISK CHILDREN PER FAMILY	TOTAL FAMILIES NOT ACCEPTED
SITE 701	JACKSON	219	569	2.6	505	2.3	171
	* SITE TOTAL *	219	569	2.6	505	2.3	171
SITE 702	ST LOUIS CITY	299	838	2.8	586	2	99
	ST LOUIS COUNTY	310	807	2.6	557	1.8	61
	* SITE TOTAL *	609	1,645	2.7	1,143	1.9	160
SITE 703	JEFFERSON	85	200	2.4	180	2.1	98
	* SITE TOTAL *	85	200	2.4	180	2.1	98
SITE 704	CHRISTIAN	14	33	2.4	28	2	9
	GREENE	75	163	2.2	132	1.8	35
	POLK	2	6	3	2	1	4
	WEBSTER	3	9	3	7	2.3	4
	* SITE TOTAL *	94	211	2.2	169	1.8	52
SITE 705	BARRY	12	24	2	22	1.8	32
	LAWRENCE	28	61	2.2	48	1.7	46
	MCDONALD	4	11	2.8	5	1.2	7
	NEWTON	11	24	2.2	21	1.9	27
	* SITE TOTAL *	55	120	2.2	96	1.7	112
SITE 708	BOONE	13	35	2.7	25	1.9	24
	CALLAWAY	17	42	2.5	39	2.3	21
	* SITE TOTAL *	30	77	2.6	64	2.1	45
SITE 710	JASPER	32	90	2.8	84	2.6	35
	* SITE TOTAL *	32	90	2.8	84	2.6	35
SITE 801	ATCHISON	2	4	2	4	2	6
	GENTRY	4	12	3	10	2.5	4
	HOLT	1	1	1	1	1	3
	NODAWAY	4	11	2.8	10	2.5	14
	WORTH	1	1	1	1	1	0
	* SITE TOTAL *	12	29	2.4	26	2.2	27
SITE 802	GRUNDY	5	10	2	10	2	15
	HARRISON	1	1	1	1	1	6
	MERCER	1	2	2	2	2	1
	PUTNAM	4	7	1.7	6	1.5	3
	* SITE TOTAL *	11	20	1.8	19	1.7	25
SITE 804	RANDOLPH	7	20	2.9	19	2.7	5
	* SITE TOTAL *	7	20	2.9	19	2.7	5
SITE 808	CAMDEN	7	19	2.7	16	2.3	2
	DALLAS	2	6	3	5	2.5	0
	HICKORY	3	8	2.7	4	1.3	2
	LACLEDE	5	15	3	13	2.6	3
	* SITE TOTAL *	17	48	2.8	38	2.2	7
SITE 810	DOUGLAS	0	0	0	0	0	1
	MARIES	1	4	4	2	2	2
	OZARK	1	2	2	2	2	2
	PHELPS	6	15	2.5	10	1.7	16
	PULASKI	8	14	1.7	11	1.4	32
	TEXAS	7	16	2.3	15	2.1	25
	WRIGHT	6	9	1.5	8	1.3	7
	* SITE TOTAL *	29	60	2.1	48	1.7	85
SITE 811	ST CHARLES	7	19	2.7	13	1.9	17
	* SITE TOTAL *	7	19	2.7	13	1.9	17
SITE 813	CHARITON	2	9	4.5	5	2.5	6
	LINN	5	14	2.8	10	2	10
	SULLIVAN	3	5	1.7	5	1.7	9
	* SITE TOTAL *	10	28	2.8	20	2	25
SITE 815	MARION	7	13	1.9	9	1.3	15
	MONROE	2	4	2	4	2	9
	RALLS	1	3	3	2	2	2
	* SITE TOTAL *	10	20	2	15	1.5	26
SITE 816	LINCOLN	7	25	3.6	18	2.6	34
	PIKE	3	4	1.3	4	1.3	6
	* SITE TOTAL *	10	29	2.9	22	2.2	40
SITE 901	ANDREW	5	10	2	9	1.8	2
	BUCHANAN	17	38	2.2	36	2.1	12
	* SITE TOTAL *	22	48	2.2	45	2	14
SITE 902	CLAY	19	49	2.6	45	2.4	7
	LAFAYETTE	7	15	2.1	13	1.9	14
	PLATTE	2	4	2	3	1.5	0
	RAY	1	4	4	4	4	2
	* SITE TOTAL *	29	72	2.5	65	2.2	23
SITE 904	CASS	25	48	1.9	33	1.3	6
	JOHNSON	28	75	2.7	69	2.5	5
	* SITE TOTAL *	53	123	2.3	102	1.9	11

**Appendix A. (continued) Intensive In-home Services**

**Families and Children Accepted/Not Accepted into Intensive In-home Services During Fiscal Year 2005**

<b>SITE</b>	<b>COUNTY</b>	<b>TOTAL FAMILIES ACCEPTED</b>	<b>TOTAL CHILDREN ACCEPTED</b>	<b>AVG.# OF CHILDREN PER FAMILY</b>	<b>AT-RISK CHILDREN ACCEPTED</b>	<b>AVG.# OF AT-RISK CHILDREN PER FAMILY</b>	<b>TOTAL FAMILIES NOT ACCEPTED</b>
SITE 905	COOPER	9	24	2.7	19	2.1	1
	PETTIS	16	37	2.3	29	1.8	7
	SALINE	18	46	2.6	35	1.9	12
	* SITE TOTAL *	43	107	2.5	83	1.9	20
SITE 907	AUDRAIN	11	23	2.1	16	1.5	7
	MONTGOMERY	5	10	2	8	1.6	0
	WARREN	8	17	2.1	13	1.6	11
	* SITE TOTAL *	24	50	2.1	37	1.5	18
SITE 908	FRANKLIN	34	91	2.7	90	2.6	2
	* SITE TOTAL *	34	91	2.7	90	2.6	2
SITE 909	COLE	11	27	2.5	17	1.5	8
	MILLER	10	23	2.3	16	1.6	11
	MONITEAU	7	15	2.1	10	1.4	0
	MORGAN	10	26	2.6	16	1.6	5
	* SITE TOTAL *	38	91	2.4	59	1.6	24
SITE 910	BATES	5	9	1.8	6	1.2	9
	BENTON	4	8	2	6	1.5	8
	HENRY	4	8	2	4	1	9
	ST CLAIR	4	11	2.8	5	1.2	3
	* SITE TOTAL *	17	36	2.1	21	1.2	29
SITE 911	BARTON	1	1	1	1	1	0
	CEDAR	1	1	1	1	1	1
	DADE	4	8	2	7	1.7	1
	VERNON	5	12	2.4	11	2.2	1
	* SITE TOTAL *	11	22	2	20	1.8	3
SITE 913	CRAWFORD	14	29	2.1	25	1.8	1
	DENT	6	18	3	13	2.2	3
	IRON	6	14	2.3	12	2	0
	REYNOLDS	4	12	3	12	3	0
	SHANNON	1	2	2	2	2	0
	* SITE TOTAL *	31	75	2.4	64	2.1	4
SITE 915	BUTLER	12	33	2.8	27	2.3	6
	CARTER	2	10	5	4	2	3
	RIPLEY	1	3	3	3	3	1
	WAYNE	3	8	2.7	6	2	4
	* SITE TOTAL *	18	54	3	40	2.2	14
SITE 916	BOLLINGER	5	10	2	9	1.8	1
	CAPE GIRARDEAU	16	49	3.1	18	1.1	13
	PERRY	9	27	3	12	1.3	3
	* SITE TOTAL *	30	86	2.9	39	1.3	17
SITE 917	MADISON	8	18	2.3	9	1.1	6
	STFRANCOIS	17	39	2.3	28	1.6	17
	STEGENEVIEVE	3	5	1.7	4	1.3	0
	WASHINGTON	10	30	3	18	1.8	16
	* SITE TOTAL *	38	92	2.4	59	1.6	39
SITE 918	STONE	5	11	2.2	9	1.8	12
	TANEY	11	29	2.6	27	2.5	12
	* SITE TOTAL *	16	40	2.5	36	2.3	24
SITE 919	ADAIR	18	34	1.9	27	1.5	9
	KNOX	3	6	2	4	1.3	3
	LEWIS	8	20	2.5	20	2.5	2
	* SITE TOTAL *	29	60	2.1	51	1.8	14
SITE 921	DUNKLIN	3	11	3.7	6	2	1
	NEW MADRID	1	2	2	2	2	0
	SCOTT	0	0	0	0	0	0
	STODDARD	1	3	3	3	3	0
	* SITE TOTAL *	5	16	3.2	11	2.2	1
SITE 922	MACON	13	33	2.5	24	1.8	0
	SHELBY	2	8	4	3	1.5	2
	* SITE TOTAL *	15	41	2.7	27	1.8	2
SITE 923	CALDWELL	0	0	0	0	0	0
	CLINTON	1	2	2	2	2	2
	DAVISS	0	0	0	0	0	1
	DE KALB	2	5	2.5	5	2.5	1
	LIVINGSTON	7	17	2.4	17	2.4	0
	* SITE TOTAL *	10	24	2.4	24	2.4	4
SITE 924	CLARK	8	20	2.5	14	1.7	2
	SCHUYLER	5	10	2	6	1.2	1
	SCOTLAND	5	10	2	5	1	0
	* SITE TOTAL *	18	40	2.2	25	1.4	3
SITE 925	HOWELL	5	10	2	10	2	10
	OREGON	5	7	1.4	6	1.2	12
	* SITE TOTAL *	10	17	1.7	16	1.6	22
<b>STATETOTAL</b>		<b>1,728</b>	<b>4,370</b>	<b>2.5</b>	<b>3,375</b>	<b>2</b>	<b>1,218</b>

**Appendix B. Intensive In-home Services**  
**Reasons At-risk Children Not Accepted During Fiscal Year 2005**

**REASON NOT ACCEPTED CODES**

SITE	COUNTY	10	11	12	13	14	15	16	17	18	19	20	21	TOTAL
SITE 701	JACKSON	76	24	3	9	34	3	6	61	2	0	0	91	309
	* SITE TOTAL *	76	24	3	9	34	3	6	61	2	0	0	91	309
SITE 702	ST LOUIS COUNTY	20	13	0	7	34	7	14	8	0	0	0	1	104
	ST LOUIS CITY	39	17	1	11	54	2	19	26	1	0	0	4	174
	* SITE TOTAL *	59	30	1	18	88	9	33	34	1	0	0	5	278
SITE 703	JEFFERSON	1	5	38	5	2	2	6	114	0	1	0	0	174
	* SITE TOTAL *	1	5	38	5	2	2	6	114	0	1	0	0	174
SITE 704	CHRISTIAN	0	5	0	2	1	0	0	0	0	0	0	3	11
	GREENE	6	20	1	1	3	1	1	8	2	0	0	7	50
	POLK	0	6	0	0	0	0	0	0	0	0	0	0	6
	WEBSTER	0	1	1	0	3	0	0	0	0	0	0	0	5
	* SITE TOTAL *	6	32	2	3	7	1	1	8	2	0	0	10	72
SITE 705	BARRY	0	64	0	0	0	0	1	0	0	2	0	0	67
	LAWRENCE	0	104	0	0	0	0	4	0	0	0	0	0	108
	MCDONALD	0	18	0	0	0	0	0	0	0	0	0	0	18
	NEWTON	0	96	0	0	0	0	0	0	0	0	0	0	96
	* SITE TOTAL *	0	282	0	0	0	0	5	0	0	2	0	0	289
SITE 708	BOONE	4	17	5	1	0	0	5	5	0	0	0	0	37
	CALLAWAY	5	25	3	4	5	0	0	2	0	0	0	0	44
	* SITE TOTAL *	9	42	8	5	5	0	5	7	0	0	0	0	81
SITE 710	JASPER	5	16	12	1	9	1	4	19	1	0	0	0	68
	* SITE TOTAL *	5	16	12	1	9	1	4	19	1	0	0	0	68
SITE 801	ATCHISON	2	0	0	0	0	0	0	4	0	0	0	0	6
	GENTRY	2	0	0	0	0	0	0	2	0	0	0	0	4
	HOLT	1	0	2	0	0	0	0	0	0	0	0	0	3
	NODAWAY	3	7	0	1	2	0	0	4	0	0	0	0	17
	* SITE TOTAL *	8	7	2	1	2	0	0	10	0	0	0	0	30
SITE 802	GRUNDY	2	2	1	2	1	1	1	7	0	0	0	0	17
	HARRISON	0	0	0	0	0	0	0	7	0	0	0	0	7
	MERCER	0	0	0	0	0	0	0	1	0	0	0	0	1
	PUTNAM	0	0	0	1	0	0	1	1	0	0	0	0	3
	* SITE TOTAL *	2	2	1	3	1	1	2	16	0	0	0	0	28
SITE 804	RANDOLPH	0	0	2	0	0	0	0	2	0	0	0	1	5
	* SITE TOTAL *	0	0	2	0	0	0	0	2	0	0	0	1	5
SITE 808	CAMDEN	3	3	0	0	0	0	0	0	0	0	0	0	6
	HICKORY	3	1	0	0	0	0	0	0	0	0	0	0	4
	LACLEDE	6	0	0	0	0	0	0	0	0	0	0	0	6
	* SITE TOTAL *	12	4	0	0	0	0	0	0	0	0	0	0	16
SITE 810	DOUGLAS	0	2	0	0	0	0	0	0	0	0	0	0	2
	MARIES	2	0	0	0	0	0	0	0	0	0	0	0	2
	OZARK	0	2	3	0	0	0	0	0	0	0	0	0	5
	PHELPS	4	4	2	2	6	1	0	0	0	0	0	0	19
	PULASKI	7	1	12	4	4	0	1	19	1	0	0	0	49
	TEXAS	12	8	11	3	5	1	0	25	0	6	0	0	71
	WRIGHT	0	5	8	1	0	0	0	0	0	0	0	0	14
	* SITE TOTAL *	25	22	36	10	15	2	1	44	1	6	0	0	162
SITE 811	ST CHARLES	0	19	8	0	1	0	0	0	0	0	0	0	28
	* SITE TOTAL *	0	19	8	0	1	0	0	0	0	0	0	0	28
SITE 813	CHARITON	3	0	0	2	1	0	0	0	0	0	0	0	6
	LINN	2	2	4	0	1	1	0	0	0	0	0	0	10
	SULLIVAN	4	2	1	0	0	0	0	2	0	0	0	0	9
	* SITE TOTAL *	9	4	5	2	2	1	0	2	0	0	0	0	25
SITE 815	MARION	0	13	1	1	0	0	6	0	0	0	0	0	21
	MONROE	0	11	4	3	0	0	0	0	0	0	0	0	18
	RALLS	0	3	0	0	1	0	0	0	0	0	0	0	4
	* SITE TOTAL *	0	27	5	4	1	0	6	0	0	0	0	0	43
SITE 816	LINCOLN	8	32	37	1	0	0	0	0	0	0	0	0	78
	PIKE	0	6	4	0	0	0	0	0	0	0	0	0	10
	* SITE TOTAL *	8	38	41	1	0	0	0	0	0	0	0	0	88
SITE 901	ANDREW	0	0	0	1	0	0	0	0	0	0	0	3	4
	BUCHANAN	0	15	0	4	4	0	1	7	0	0	0	0	31
	* SITE TOTAL *	0	15	0	5	4	0	1	7	0	0	0	3	35
SITE 902	CLAY	0	1	5	0	0	0	0	7	0	0	0	0	13
	LAFAYETTE	3	11	3	0	1	4	0	0	0	0	0	0	22
	RAY	0	0	0	0	4	0	0	0	0	0	0	0	4
	* SITE TOTAL *	3	12	8	0	5	4	0	7	0	0	0	0	39
SITE 904	CASS	1	2	0	0	3	0	0	3	0	0	0	0	9
	JOHNSON	1	3	2	2	0	0	0	0	0	0	0	0	8
	* SITE TOTAL *	2	5	2	2	3	0	0	3	0	0	0	0	17

**Reason Not Accepted Codes:**

10	No Immediate Likelihood of Placement	14	Caretaker Unwilling to Participate	18	Child is Physically Assaultive
11	No Opening in IIS - Child at Home	15	Child Unwilling to Participate	19	Therapist's Safety Cannot be Assured
12	No Opening in IIS - Child will be Placed	16	Unable to Contact Family	20	Child Does Not Meet Age Requirement
13	Primary Caretaker Unavailable	17	Child's Safety Cannot be Assured	21	Referral Source Did Not Follow Through

**Appendix B. (continued) Intensive In-home Services  
Reasons At-risk Children Not Accepted During Fiscal Year 2005**

**REASON NOT ACCEPTED CODES**

SITE	COUNTY	10	11	12	13	14	15	16	17	18	19	20	21	TOTAL
SITE 905	COOPER	0	0	0	0	1	0	0	0	0	0	0	0	1
	PETTIS	0	5	0	0	2	1	0	0	0	0	0	0	8
	SALINE	5	12	1	0	0	0	0	2	0	0	0	2	22
	* SITE TOTAL *	5	17	1	0	3	1	0	2	0	0	0	2	31
SITE 907	AUDRAIN	2	2	0	0	5	0	0	1	1	0	0	0	11
	WARREN	2	14	0	1	2	1	0	0	0	0	0	0	20
	* SITE TOTAL *	4	16	0	1	7	1	0	1	1	0	0	0	31
SITE 908	FRANKLIN	0	0	0	0	1	0	0	1	0	0	0	0	2
	* SITE TOTAL *	0	0	0	0	1	0	0	1	0	0	0	0	2
SITE 909	COLE	0	6	0	3	5	0	4	0	0	0	0	0	18
	MILLER	0	10	1	0	2	1	0	0	0	0	1	0	15
	MORGAN	2	5	0	0	0	0	0	0	0	0	0	0	7
	* SITE TOTAL *	2	21	1	3	7	1	4	0	0	0	1	0	40
SITE 910	BATES	0	6	3	1	1	0	0	3	2	0	0	0	16
	BENTON	0	5	1	0	1	0	0	1	0	0	0	0	8
	HENRY	0	11	2	0	1	0	0	0	0	0	0	0	14
	ST CLAIR	0	4	0	0	0	0	0	4	0	0	0	0	8
	* SITE TOTAL *	0	26	6	1	3	0	0	8	2	0	0	0	46
SITE 911	CEDAR	0	0	0	0	0	0	0	1	0	0	0	0	1
	DADE	0	0	0	0	1	0	0	0	0	0	0	0	1
	VERNON	0	1	0	0	0	0	0	0	0	0	0	0	1
	* SITE TOTAL *	0	1	0	0	1	0	0	1	0	0	0	0	3
SITE 913	CRAWFORD	0	0	0	0	0	0	0	0	1	0	0	0	1
	DENT	0	0	0	4	0	1	0	0	0	0	0	2	7
	* SITE TOTAL *	0	0	0	4	0	1	0	0	1	0	0	2	8
SITE 915	BUTLER	2	0	4	7	0	0	0	0	0	0	0	0	13
	CARTER	0	6	0	0	0	0	4	0	0	0	0	0	10
	RIPLEY	0	0	0	0	1	0	0	0	0	0	0	0	1
	WAYNE	4	0	0	0	0	0	0	3	0	0	0	0	7
	* SITE TOTAL *	6	6	4	7	1	0	4	3	0	0	0	0	31
SITE 916	BOLLINGER	0	1	0	0	0	0	0	0	0	0	0	0	1
	CAPE GIRARDEAU	6	0	0	1	3	0	1	7	0	0	0	0	18
	PERRY	1	0	0	0	1	0	0	0	1	0	0	0	3
	* SITE TOTAL *	7	1	0	1	4	0	1	7	1	0	0	0	22
SITE 917	MADISON	0	6	0	0	0	0	0	0	1	0	0	0	7
	STFRANCOIS	0	10	1	0	1	3	0	0	0	0	0	2	17
	WASHINGTON	0	12	0	0	3	0	2	0	0	0	0	0	17
	* SITE TOTAL *	0	28	1	0	4	3	2	0	1	0	0	2	41
SITE 918	STONE	0	29	3	0	0	0	0	0	0	0	0	0	32
	TANEY	0	26	13	0	0	0	0	0	0	5	0	0	44
	* SITE TOTAL *	0	55	16	0	0	0	0	0	0	5	0	0	76
SITE 919	ADAIR	0	9	0	3	1	1	0	0	0	0	0	0	14
	KNOX	0	4	0	0	1	0	0	0	0	0	0	0	5
	LEWIS	0	3	0	0	0	0	0	0	0	0	0	0	3
	* SITE TOTAL *	0	16	0	3	2	1	0	0	0	0	0	0	22
SITE 921	DUNKLIN	0	0	0	0	0	0	4	0	0	0	0	0	4
	* SITE TOTAL *	0	0	0	0	0	0	4	0	0	0	0	0	4
SITE 922	SHELBY	0	0	0	0	0	0	2	2	0	0	0	0	4
	* SITE TOTAL *	0	0	0	0	0	0	2	2	0	0	0	0	4
SITE 923	CLINTON	0	1	0	0	0	0	0	1	0	0	0	0	2
	DAVISS	0	1	0	0	0	0	0	0	0	0	0	0	1
	DE KALB	0	0	0	0	1	0	0	0	0	0	0	0	1
	* SITE TOTAL *	0	2	0	0	1	0	0	1	0	0	0	0	4
SITE 924	CLARK	0	1	0	0	0	0	0	1	0	0	0	0	2
	SCHUYLER	0	1	0	0	0	0	0	0	0	0	0	0	1
	* SITE TOTAL *	0	2	0	0	0	0	0	1	0	0	0	0	3
SITE 925	HOWELL	0	9	2	0	0	0	0	0	0	0	0	0	11
	OREGON	0	7	3	1	0	0	1	0	0	0	0	0	12
	* SITE TOTAL *	0	16	5	1	0	0	1	0	0	0	0	0	23
<b>STATE TOTAL</b>		<b>249</b>	<b>793</b>	<b>208</b>	<b>90</b>	<b>213</b>	<b>32</b>	<b>88</b>	<b>361</b>	<b>13</b>	<b>14</b>	<b>1</b>	<b>116</b>	<b>2,178</b>

**Reason Not Accepted Codes:**

10	No Immediate Likelihood of Placement	14	Caretaker Unwilling to Participate	18	Child is Physically Assaultive
11	No Opening in IIS - Child at Home	15	Child Unwilling to Participate	19	Therapist's Safety Cannot be Assured
12	No Opening in IIS - Child will be Placed	16	Unable to Contact Family	20	Child Does Not Meet Age Requirement
13	Primary Caretaker Unavailable	17	Child's Safety Cannot be Assured	21	Referral Source Did Not Follow Through

**Appendix C. Intensive In-home Services  
Families Accepted During Fiscal Year 2005 by Referral Source Code**

SITE	COUNTY	COURT	DMH	DMH	DSS	DSS	FAMILY/ FRIENDS	LAW	OTHER	PRIVATE		TOTAL	
			CPS	CPS				EN- FORCE-		MENTAL	SCHOOL		
			IN- PATIENT	OUT- PATIENT	CD	DYS				HEALTH	SYSTEM	SELF	
SITE 701	JACKSON	0	0	2	216	0	0	0	0	0	0	1	219
	* SITE TOTAL *	0	0	2	216	0	0	0	0	0	0	1	219
SITE 702	ST LOUIS CITY	12	0	0	241	1	0	0	20	3	2	20	299
	ST LOUIS COUNTY	14	0	0	242	4	1	0	13	6	5	25	310
	* SITE TOTAL *	26	0	0	483	5	1	0	33	9	7	45	609
SITE 703	JEFFERSON	0	0	1	80	1	0	0	0	0	0	3	85
	* SITE TOTAL *	0	0	1	80	1	0	0	0	0	0	3	85
SITE 704	CHRISTIAN	2	0	0	12	0	0	0	0	0	0	0	14
	GREENE	4	0	0	69	0	0	0	0	2	0	0	75
	POLK	0	0	0	2	0	0	0	0	0	0	0	2
	WEBSTER	1	0	0	2	0	0	0	0	0	0	0	3
	* SITE TOTAL *	7	0	0	85	0	0	0	2	2	0	0	94
SITE 705	BARRY	0	0	1	10	0	0	0	0	0	0	1	12
	LAWRENCE	0	0	1	26	0	0	0	0	1	0	0	28
	MCDONALD	0	0	0	4	0	0	0	0	0	0	0	4
	NEWTON	0	0	0	11	0	0	0	0	0	0	0	11
	* SITE TOTAL *	0	0	2	51	0	0	0	0	1	0	1	55
SITE 708	BOONE	0	0	0	11	0	1	0	0	0	1	0	13
	CALLAWAY	0	0	0	16	0	0	0	0	1	0	0	17
	* SITE TOTAL *	0	0	0	27	0	1	0	0	1	1	0	30
SITE 710	JASPER	3	0	0	29	0	0	0	0	0	0	0	32
	* SITE TOTAL *	3	0	0	29	0	0	0	0	0	0	0	32
SITE 801	ATCHISON	0	0	0	2	0	0	0	0	0	0	0	2
	GENTRY	0	0	0	4	0	0	0	0	0	0	0	4
	HOLT	0	0	0	1	0	0	0	0	0	0	0	1
	NODAWAY	0	0	0	4	0	0	0	0	0	0	0	4
	WORTH	0	0	0	1	0	0	0	0	0	0	0	1
	* SITE TOTAL *	0	0	0	12	0	0	0	0	0	0	0	12
SITE 802	GRUNDY	0	0	0	5	0	0	0	0	0	0	0	5
	HARRISON	0	0	0	1	0	0	0	0	0	0	0	1
	MERCER	0	0	0	1	0	0	0	0	0	0	0	1
	PUTNAM	0	0	0	4	0	0	0	0	0	0	0	4
	* SITE TOTAL *	0	0	0	11	0	0	0	0	0	0	0	11
SITE 804	RANDOLPH	0	0	0	7	0	0	0	0	0	0	0	7
	* SITE TOTAL *	0	0	0	7	0	0	0	0	0	0	0	7
SITE 808	CAMDEN	0	0	0	7	0	0	0	0	0	0	0	7
	DALLAS	0	0	0	2	0	0	0	0	0	0	0	2
	HICKORY	0	0	0	3	0	0	0	0	0	0	0	3
	LACLEDE	0	0	0	5	0	0	0	0	0	0	0	5
	* SITE TOTAL *	0	0	0	17	0	0	0	0	0	0	0	17
SITE 810	MARIES	0	0	0	1	0	0	0	0	0	0	0	1
	OZARK	0	0	0	1	0	0	0	0	0	0	0	1
	PHELPS	1	0	0	2	1	0	0	2	0	0	0	6
	PULASKI	1	0	0	3	0	0	0	4	0	0	0	8
	TEXAS	1	0	0	1	0	0	0	5	0	0	0	7
	WRIGHT	0	0	0	5	0	1	0	0	0	0	0	6
	* SITE TOTAL *	3	0	0	13	1	1	0	11	0	0	0	29
SITE 811	ST CHARLES	0	0	0	7	0	0	0	0	0	0	0	7
	* SITE TOTAL *	0	0	0	7	0	0	0	0	0	0	0	7
SITE 813	CHARITON	0	0	0	2	0	0	0	0	0	0	0	2
	LINN	0	0	0	4	0	0	0	0	1	0	0	5
	SULLIVAN	0	0	0	3	0	0	0	0	0	0	0	3
	* SITE TOTAL *	0	0	0	9	0	0	0	0	1	0	0	10
SITE 815	MARION	2	0	0	5	0	0	0	0	0	0	0	7
	MONROE	0	0	0	2	0	0	0	0	0	0	0	2
	RALLS	0	0	0	1	0	0	0	0	0	0	0	1
	* SITE TOTAL *	2	0	0	8	0	0	0	0	0	0	0	10
SITE 816	LINCOLN	0	0	0	5	1	0	1	0	0	0	0	7
	PIKE	0	0	0	3	0	0	0	0	0	0	0	3
	* SITE TOTAL *	0	0	0	8	1	0	1	0	0	0	0	10
SITE 901	ANDREW	0	0	0	5	0	0	0	0	0	0	0	5
	BUCHANAN	0	0	0	17	0	0	0	0	0	0	0	17
	* SITE TOTAL *	0	0	0	22	0	0	0	0	0	0	0	22
SITE 902	CLAY	0	0	0	19	0	0	0	0	0	0	0	19
	LAFAYETTE	2	0	0	5	0	0	0	0	0	0	0	7
	PLATTE	0	0	0	2	0	0	0	0	0	0	0	2
	RAY	0	0	0	1	0	0	0	0	0	0	0	1
	* SITE TOTAL *	2	0	0	27	0	0	0	0	0	0	0	29
SITE 904	CASS	5	0	0	18	0	0	0	2	0	0	0	25
	JOHNSON	1	1	0	26	0	0	0	0	0	0	0	28
	* SITE TOTAL *	6	1	0	44	0	0	0	2	0	0	0	53

**Appendix C. (continued) Intensive In-home Services  
Families Accepted During Fiscal Year 2005 by Referral Source Code**

SITE	COUNTY	COURT	DMH	DMH	DSS	DSS	FAMILY/ FRIENDS	LAW	OTHER	PRIVATE		TOTAL	
			CPS	CPS				EN- FORCE-		MENTAL	SCHOOL		
			IN- PATIENT	OUT- PATIENT	DYS	CD				HEALTH	SYSTEM	SELF	
SITE 905	COOPER	0	0	0	7	0	0	1	1	0	0	0	9
	PETTIS	0	0	0	13	0	0	1	1	1	0	0	16
	SALINE	0	0	0	18	0	0	0	0	0	0	0	18
	* SITE TOTAL *	0	0	0	38	0	0	2	2	1	0	0	43
SITE 907	AUDRAIN	0	0	0	11	0	0	0	0	0	0	0	11
	MONTGOMERY	0	0	0	5	0	0	0	0	0	0	0	5
	WARREN	0	0	0	8	0	0	0	0	0	0	0	8
	* SITE TOTAL *	0	0	0	24	0	0	0	0	0	0	0	24
SITE 908	FRANKLIN	0	0	0	34	0	0	0	0	0	0	0	34
	* SITE TOTAL *	0	0	0	34	0	0	0	0	0	0	0	34
SITE 909	COLE	1	0	0	10	0	0	0	0	0	0	0	11
	MILLER	0	0	2	8	0	0	0	0	0	0	0	10
	MONITEAU	0	0	0	7	0	0	0	0	0	0	0	7
	MORGAN	0	0	0	10	0	0	0	0	0	0	0	10
	* SITE TOTAL *	1	0	2	35	0	0	0	0	0	0	0	38
SITE 910	BATES	0	0	0	3	0	0	1	0	1	0	0	5
	BENTON	0	0	0	4	0	0	0	0	0	0	0	4
	HENRY	0	0	0	3	0	0	1	0	0	0	0	4
	ST CLAIR	0	0	0	4	0	0	0	0	0	0	0	4
	* SITE TOTAL *	0	0	0	14	0	0	2	0	1	0	0	17
SITE 911	BARTON	0	0	0	1	0	0	0	0	0	0	0	1
	CEDAR	0	0	0	0	0	0	0	1	0	0	0	1
	DADE	0	0	0	4	0	0	0	0	0	0	0	4
	VERNON	0	0	0	4	1	0	0	0	0	0	0	5
	* SITE TOTAL *	0	0	0	9	1	0	0	1	0	0	0	11
SITE 913	CRAWFORD	2	1	0	10	0	1	0	0	0	0	0	14
	DENT	0	0	0	4	0	0	0	0	1	1	0	6
	IRON	0	0	0	6	0	0	0	0	0	0	0	6
	REYNOLDS	0	0	0	4	0	0	0	0	0	0	0	4
	SHANNON	0	0	0	1	0	0	0	0	0	0	0	1
	* SITE TOTAL *	2	1	0	25	0	1	0	0	1	1	0	31
SITE 915	BUTLER	0	0	0	12	0	0	0	0	0	0	0	12
	CARTER	0	0	0	2	0	0	0	0	0	0	0	2
	RIPLEY	0	0	0	1	0	0	0	0	0	0	0	1
	WAYNE	1	0	0	2	0	0	0	0	0	0	0	3
	* SITE TOTAL *	1	0	0	17	0	0	0	0	0	0	0	18
SITE 916	BOLLINGER	0	0	0	2	0	0	1	0	2	0	0	5
	CAPE GIRARDEAU	1	0	0	11	0	0	0	0	4	0	0	16
	PERRY	1	0	1	5	0	0	0	0	2	0	0	9
	* SITE TOTAL *	2	0	1	18	0	0	1	0	8	0	0	30
SITE 917	MADISON	0	0	0	6	1	0	0	1	0	0	0	8
	ST FRANCOIS	0	0	0	9	4	0	2	0	2	0	0	17
	STE GENEVIEVE	0	0	0	1	0	0	1	0	1	0	0	3
	WASHINGTON	0	0	0	8	0	0	0	0	2	0	0	10
	* SITE TOTAL *	0	0	0	24	5	0	3	1	5	0	0	38
SITE 918	STONE	0	0	0	5	0	0	0	0	0	0	0	5
	TANEY	0	0	0	11	0	0	0	0	0	0	0	11
	* SITE TOTAL *	0	0	0	16	0	0	0	0	0	0	0	16
SITE 919	ADAIR	0	0	0	18	0	0	0	0	0	0	0	18
	KNOX	0	0	0	3	0	0	0	0	0	0	0	3
	LEWIS	0	0	0	8	0	0	0	0	0	0	0	8
	* SITE TOTAL *	0	0	0	29	0	0	0	0	0	0	0	29
SITE 921	DUNKLIN	0	0	0	3	0	0	0	0	0	0	0	3
	NEW MADRID	0	0	0	1	0	0	0	0	0	0	0	1
	STODDARD	0	0	0	1	0	0	0	0	0	0	0	1
	* SITE TOTAL *	0	0	0	5	0	0	0	0	0	0	0	5
SITE 922	MACON	0	0	0	9	4	0	0	0	0	0	0	13
	SHELBY	0	0	0	2	0	0	0	0	0	0	0	2
	* SITE TOTAL *	0	0	0	11	4	0	0	0	0	0	0	15
SITE 923	CLINTON	0	0	0	1	0	0	0	0	0	0	0	1
	DE KALB	0	0	0	2	0	0	0	0	0	0	0	2
	LIVINGSTON	0	0	0	7	0	0	0	0	0	0	0	7
	* SITE TOTAL *	0	0	0	10	0	0	0	0	0	0	0	10
SITE 924	CLARK	0	0	0	7	1	0	0	0	0	0	0	8
	SCHUYLER	0	0	0	5	0	0	0	0	0	0	0	5
	SCOTLAND	0	0	0	5	0	0	0	0	0	0	0	5
	* SITE TOTAL *	0	0	0	17	1	0	0	0	0	0	0	18
SITE 925	HOWELL	0	0	0	5	0	0	0	0	0	0	0	5
	OREGON	0	0	0	5	0	0	0	0	0	0	0	5
	* SITE TOTAL *	0	0	0	10	0	0	0	0	0	0	0	10
<b>STATETOTAL</b>		<b>55</b>	<b>2</b>	<b>8</b>	<b>1,492</b>	<b>19</b>	<b>4</b>	<b>9</b>	<b>50</b>	<b>30</b>	<b>9</b>	<b>50</b>	<b>1,728</b>

**Appendix D. Intensive In-home Services  
Head of Household Age For Families Accepted During Fiscal Year 2005**

SITE	COUNTY	0-19	20-29	30-39	40-49	50-59	60-69	> = 70	NOT	
									REPORTED	TOTAL
SITE 701	JACKSON	14	78	81	35	6	4	0	1	219
	* SITE TOTAL *	14	78	81	35	6	4	0	1	219
SITE 702	ST LOUIS CITY	6	85	109	59	26	10	4	0	299
	ST LOUIS COUNTY	3	60	129	74	30	9	4	1	310
	* SITE TOTAL *	9	145	238	133	56	19	8	1	609
SITE 703	JEFFERSON	2	20	43	18	2	0	0	0	85
	* SITE TOTAL *	2	20	43	18	2	0	0	0	85
SITE 704	CHRISTIAN	0	5	5	3	1	0	0	0	14
	GREENE	4	33	22	10	3	2	0	1	75
	POLK	0	0	1	0	0	1	0	0	2
	WEBSTER	0	2	1	0	0	0	0	0	3
	* SITE TOTAL *	4	40	29	13	4	3	0	1	94
SITE 705	BARRY	1	4	5	1	1	0	0	0	12
	LAWRENCE	0	7	12	6	3	0	0	0	28
	MCDONALD	0	1	1	1	0	1	0	0	4
	NEWTON	0	5	4	2	0	0	0	0	11
	* SITE TOTAL *	1	17	22	10	4	1	0	0	55
SITE 708	BOONE	1	6	3	2	0	1	0	0	13
	CALLAWAY	1	5	5	4	1	1	0	0	17
	* SITE TOTAL *	2	11	8	6	1	2	0	0	30
SITE 710	JASPER	1	10	16	4	1	0	0	0	32
	* SITE TOTAL *	1	10	16	4	1	0	0	0	32
SITE 801	ATCHISON	0	2	0	0	0	0	0	0	2
	GENTRY	0	2	0	1	0	1	0	0	4
	HOLT	0	0	1	0	0	0	0	0	1
	NODAWAY	0	3	1	0	0	0	0	0	4
	WORTH	0	0	1	0	0	0	0	0	1
	* SITE TOTAL *	0	7	3	1	0	1	0	0	12
SITE 802	GRUNDY	0	3	2	0	0	0	0	0	5
	HARRISON	0	0	0	1	0	0	0	0	1
	MERCER	0	1	0	0	0	0	0	0	1
	PUTNAM	0	3	1	0	0	0	0	0	4
	* SITE TOTAL *	0	7	3	1	0	0	0	0	11
SITE 804	RANDOLPH	0	2	2	3	0	0	0	0	7
	* SITE TOTAL *	0	2	2	3	0	0	0	0	7
SITE 808	CAMDEN	0	4	3	0	0	0	0	0	7
	DALLAS	0	0	1	1	0	0	0	0	2
	HICKORY	0	1	1	0	1	0	0	0	3
	LACLEDE	0	2	2	1	0	0	0	0	5
	* SITE TOTAL *	0	7	7	2	1	0	0	0	17
SITE 810	MARIES	0	0	0	0	1	0	0	0	1
	OZARK	0	1	0	0	0	0	0	0	1
	PHELPS	0	0	2	3	1	0	0	0	6
	PULASKI	1	2	2	3	0	0	0	0	8
	TEXAS	0	3	3	1	0	0	0	0	7
	WRIGHT	0	3	2	0	1	0	0	0	6
	* SITE TOTAL *	1	9	9	7	3	0	0	0	29
SITE 811	ST CHARLES	0	1	4	2	0	0	0	0	7
	* SITE TOTAL *	0	1	4	2	0	0	0	0	7
SITE 813	CHARITON	0	0	1	1	0	0	0	0	2
	LINN	0	1	3	1	0	0	0	0	5
	SULLIVAN	0	1	1	1	0	0	0	0	3
	* SITE TOTAL *	0	2	5	3	0	0	0	0	10
SITE 815	MARION	0	3	3	1	0	0	0	0	7
	MONROE	0	1	1	0	0	0	0	0	2
	RALLS	0	0	0	1	0	0	0	0	1
	* SITE TOTAL *	0	4	4	2	0	0	0	0	10
SITE 816	LINCOLN	0	1	4	1	1	0	0	0	7
	PIKE	0	0	2	1	0	0	0	0	3
	* SITE TOTAL *	0	1	6	2	1	0	0	0	10
SITE 901	ANDREW	0	0	2	2	1	0	0	0	5
	BUCHANAN	1	9	5	0	1	1	0	0	17
	* SITE TOTAL *	1	9	7	2	2	1	0	0	22
SITE 902	CLAY	0	3	13	3	0	0	0	0	19
	LAFAYETTE	0	1	3	2	1	0	0	0	7
	PLATTE	0	1	1	0	0	0	0	0	2
	RAY	0	1	0	0	0	0	0	0	1
	* SITE TOTAL *	0	6	17	5	1	0	0	0	29
SITE 904	CASS	1	6	10	5	3	0	0	0	25
	JOHNSON	0	9	18	0	1	0	0	0	28
	* SITE TOTAL *	1	15	28	5	4	0	0	0	53

**Appendix D. (continued) Intensive In-home Services  
Head of Household Age For Families Accepted During Fiscal Year 2005**

SITE	COUNTY	0-19	20-29	30-39	40-49	50-59	60-69	> = 70	NOT	TOTAL
									REPORTED	
SITE 905	COOPER	0	4	3	2	0	0	0	0	9
	PETTIS	0	6	6	3	1	0	0	0	16
	SALINE	0	8	6	3	1	0	0	0	18
	* SITE TOTAL *	0	18	15	8	2	0	0	0	43
SITE 907	AUDRAIN	2	1	5	1	0	2	0	0	11
	MONTGOMERY	0	0	2	3	0	0	0	0	5
	WARREN	0	2	2	3	1	0	0	0	8
	* SITE TOTAL *	2	3	9	7	1	2	0	0	24
SITE 908	FRANKLIN	2	12	11	8	1	0	0	0	34
	* SITE TOTAL *	2	12	11	8	1	0	0	0	34
SITE 909	COLE	0	2	5	2	0	1	1	0	11
	MILLER	0	1	4	5	0	0	0	0	10
	MONITEAU	0	2	2	0	1	1	0	1	7
	MORGAN	0	1	6	1	1	0	1	0	10
	* SITE TOTAL *	0	6	17	8	2	2	2	1	38
SITE 910	BATES	0	3	2	0	0	0	0	0	5
	BENTON	1	0	2	0	1	0	0	0	4
	HENRY	0	0	1	3	0	0	0	0	4
	ST CLAIR	0	0	1	3	0	0	0	0	4
	* SITE TOTAL *	1	3	6	6	1	0	0	0	17
SITE 911	BARTON	0	1	0	0	0	0	0	0	1
	CEDAR	0	0	1	0	0	0	0	0	1
	DADE	0	1	3	0	0	0	0	0	4
	VERNON	0	1	3	1	0	0	0	0	5
	* SITE TOTAL *	0	3	7	1	0	0	0	0	11
SITE 913	CRAWFORD	0	4	8	2	0	0	0	0	14
	DENT	0	3	3	0	0	0	0	0	6
	IRON	0	2	3	0	0	0	1	0	6
	REYNOLDS	0	3	0	1	0	0	0	0	4
	SHANNON	0	0	1	0	0	0	0	0	1
	* SITE TOTAL *	0	12	15	3	0	0	1	0	31
SITE 915	BUTLER	1	5	4	2	0	0	0	0	12
	CARTER	0	0	1	0	1	0	0	0	2
	RIPLEY	0	0	0	0	1	0	0	0	1
	WAYNE	0	0	3	0	0	0	0	0	3
	* SITE TOTAL *	1	5	8	2	2	0	0	0	18
SITE 916	BOLLINGER	0	0	4	0	1	0	0	0	5
	CAPE GIRARDEAU	1	1	7	6	1	0	0	0	16
	PERRY	0	2	5	0	1	0	1	0	9
	* SITE TOTAL *	1	3	16	6	3	0	1	0	30
SITE 917	MADISON	1	2	3	1	1	0	0	0	8
	ST FRANCOIS	0	4	7	4	2	0	0	0	17
	STE GENEVIEVE	0	0	2	0	1	0	0	0	3
	WASHINGTON	0	1	6	2	1	0	0	0	10
	* SITE TOTAL *	1	7	18	7	5	0	0	0	38
SITE 918	STONE	0	1	2	2	0	0	0	0	5
	TANEY	0	5	5	0	1	0	0	0	11
	* SITE TOTAL *	0	6	7	2	1	0	0	0	16
SITE 919	ADAIR	2	4	11	0	1	0	0	0	18
	KNOX	0	1	1	1	0	0	0	0	3
	LEWIS	0	3	2	2	1	0	0	0	8
	* SITE TOTAL *	2	8	14	3	2	0	0	0	29
SITE 921	DUNKLIN	0	1	2	0	0	0	0	0	3
	NEW MADRID	0	1	0	0	0	0	0	0	1
	STODDARD	0	0	0	0	1	0	0	0	1
	* SITE TOTAL *	0	2	2	0	1	0	0	0	5
SITE 922	MACON	1	3	5	2	1	1	0	0	13
	SHELBY	0	0	1	1	0	0	0	0	2
	* SITE TOTAL *	1	3	6	3	1	1	0	0	15
SITE 923	CLINTON	0	0	0	1	0	0	0	0	1
	DE KALB	1	0	1	0	0	0	0	0	2
	LIVINGSTON	1	3	3	0	0	0	0	0	7
	* SITE TOTAL *	2	3	4	1	0	0	0	0	10
SITE 924	CLARK	0	3	2	3	0	0	0	0	8
	SCHUYLER	0	0	1	2	2	0	0	0	5
	SCOTLAND	1	0	2	2	0	0	0	0	5
	* SITE TOTAL *	1	3	5	7	2	0	0	0	18
SITE 925	HOWELL	1	1	1	2	0	0	0	0	5
	OREGON	0	2	1	1	1	0	0	0	5
	* SITE TOTAL *	1	3	2	3	1	0	0	0	10
<b>STATE TOTAL</b>		<b>51</b>	<b>491</b>	<b>694</b>	<b>329</b>	<b>111</b>	<b>36</b>	<b>12</b>	<b>4</b>	<b>1,728</b>



**Appendix E. Intensive In-home Services**  
**Head of Household Gender For Families Accepted During Fiscal Year 2005**

SITE	COUNTY	FEMALE		MALE		NOT REPORTED		TOTAL
		NUMBER	PERCENT	NUMBER	PERCENT	NUMBER	PERCENT	
SITE 701	JACKSON	198	90.4	20	9.1	1	0.5	219
	* SITE TOTAL *	198	90.4	20	9.1	1	0.5	219
SITE 702	ST LOUIS CITY	269	90	30	10	0	0	299
	ST LOUIS COUNTY	277	89.4	32	10.3	1	0.3	310
	* SITE TOTAL *	546	89.7	62	10.2	1	0.2	609
SITE 703	JEFFERSON	61	71.8	24	28.2	0	0	85
	* SITE TOTAL *	61	71.8	24	28.2	0	0	85
SITE 704	CHRISTIAN	11	78.6	3	21.4	0	0	14
	GREENE	68	90.7	6	8	1	1.3	75
	POLK	1	50	1	50	0	0	2
	WEBSTER	3	100	0	0	0	0	3
	* SITE TOTAL *	83	88.3	10	10.6	1	1.1	94
SITE 705	BARRY	11	91.7	1	8.3	0	0	12
	LAWRENCE	26	92.9	2	7.1	0	0	28
	MCDONALD	3	75	1	25	0	0	4
	NEWTON	11	100	0	0	0	0	11
	* SITE TOTAL *	51	92.7	4	7.3	0	0	55
SITE 708	BOONE	12	92.3	1	7.7	0	0	13
	CALLAWAY	17	100	0	0	0	0	17
	* SITE TOTAL *	29	96.7	1	3.3	0	0	30
SITE 710	JASPER	30	93.8	2	6.3	0	0	32
	* SITE TOTAL *	30	93.8	2	6.3	0	0	32
SITE 801	ATCHISON	2	100	0	0	0	0	2
	GENTRY	2	50	2	50	0	0	4
	HOLT	1	100	0	0	0	0	1
	NODAWAY	4	100	0	0	0	0	4
	WORTH	1	100	0	0	0	0	1
	* SITE TOTAL *	10	83.3	2	16.7	0	0	12
SITE 802	GRUNDY	3	60	2	40	0	0	5
	HARRISON	1	100	0	0	0	0	1
	MERCER	0	0	1	100	0	0	1
	PUTNAM	3	75	1	25	0	0	4
	* SITE TOTAL *	7	63.6	4	36.4	0	0	11
SITE 804	RANDOLPH	6	85.7	1	14.3	0	0	7
	* SITE TOTAL *	6	85.7	1	14.3	0	0	7
SITE 808	CAMDEN	7	100	0	0	0	0	7
	DALLAS	1	50	1	50	0	0	2
	HICKORY	2	66.7	1	33.3	0	0	3
	LACLEDE	5	100	0	0	0	0	5
	* SITE TOTAL *	15	88.2	2	11.8	0	0	17
SITE 810	MARIES	1	100	0	0	0	0	1
	OZARK	1	100	0	0	0	0	1
	PHELPS	3	50	3	50	0	0	6
	PULASKI	7	87.5	1	12.5	0	0	8
	TEXAS	5	71.4	2	28.6	0	0	7
	WRIGHT	6	100	0	0	0	0	6
	* SITE TOTAL *	23	79.3	6	20.7	0	0	29
SITE 811	ST CHARLES	7	100	0	0	0	0	7
	* SITE TOTAL *	7	100	0	0	0	0	7
SITE 813	CHARITON	2	100	0	0	0	0	2
	LINN	5	100	0	0	0	0	5
	SULLIVAN	3	100	0	0	0	0	3
	* SITE TOTAL *	10	100	0	0	0	0	10
SITE 815	MARION	7	100	0	0	0	0	7
	MONROE	1	50	1	50	0	0	2
	RALLS	1	100	0	0	0	0	1
	* SITE TOTAL *	9	90	1	10	0	0	10
SITE 816	LINCOLN	6	85.7	1	14.3	0	0	7
	PIKE	3	100	0	0	0	0	3
	* SITE TOTAL *	9	90	1	10	0	0	10
SITE 901	ANDREW	4	80	1	20	0	0	5
	BUCHANAN	16	94.1	1	5.9	0	0	17
	* SITE TOTAL *	20	90.9	2	9.1	0	0	22
SITE 902	CLAY	18	94.7	1	5.3	0	0	19
	LAFAYETTE	2	28.6	5	71.4	0	0	7
	PLATTE	2	100	0	0	0	0	2
	RAY	1	100	0	0	0	0	1
	* SITE TOTAL *	23	79.3	6	20.7	0	0	29
SITE 904	CASS	21	84	4	16	0	0	25
	JOHNSON	24	85.7	4	14.3	0	0	28
	* SITE TOTAL *	45	84.9	8	15.1	0	0	53

**Appendix E. (continued) Intensive In-home Services  
Head of Household Gender For Families Accepted During Fiscal Year 2005**

SITE	COUNTY	FEMALE		MALE		NOT REPORTED		TOTAL
		NUMBER	PERCENT	NUMBER	PERCENT	NUMBER	PERCENT	
SITE 905	COOPER	7	77.8	2	22.2	0	0	9
	PETTIS	14	87.5	2	12.5	0	0	16
	SALINE	15	83.3	3	16.7	0	0	18
	* SITE TOTAL *	36	83.7	7	16.3	0	0	43
SITE 907	AUDRAIN	7	63.6	4	36.4	0	0	11
	MONTGOMERY	5	100	0	0	0	0	5
	WARREN	6	75	2	25	0	0	8
	* SITE TOTAL *	18	75	6	25	0	0	24
SITE 908	FRANKLIN	25	73.5	9	26.5	0	0	34
	* SITE TOTAL *	25	73.5	9	26.5	0	0	34
SITE 909	COLE	10	90.9	1	9.1	0	0	11
	MILLER	7	70	3	30	0	0	10
	MONITEAU	5	71.4	1	14.3	1	14.3	7
	MORGAN	7	70	3	30	0	0	10
	* SITE TOTAL *	29	76.3	8	21.1	1	2.6	38
SITE 910	BATES	4	80	1	20	0	0	5
	BENTON	2	50	2	50	0	0	4
	HENRY	2	50	2	50	0	0	4
	ST CLAIR	3	75	1	25	0	0	4
	* SITE TOTAL *	11	64.7	6	35.3	0	0	17
SITE 911	BARTON	1	100	0	0	0	0	1
	CEDAR	1	100	0	0	0	0	1
	DADE	4	100	0	0	0	0	4
	VERNON	5	100	0	0	0	0	5
	* SITE TOTAL *	11	100	0	0	0	0	11
SITE 913	CRAWFORD	13	92.9	1	7.1	0	0	14
	DENT	6	100	0	0	0	0	6
	IRON	6	100	0	0	0	0	6
	REYNOLDS	4	100	0	0	0	0	4
	SHANNON	1	100	0	0	0	0	1
	* SITE TOTAL *	30	96.8	1	3.2	0	0	31
SITE 915	BUTLER	11	91.7	1	8.3	0	0	12
	CARTER	1	50	1	50	0	0	2
	RIPLEY	1	100	0	0	0	0	1
	WAYNE	3	100	0	0	0	0	3
	* SITE TOTAL *	16	88.9	2	11.1	0	0	18
SITE 916	BOLLINGER	3	60	2	40	0	0	5
	CAPE GIRARDEAU	12	75	4	25	0	0	16
	PERRY	7	77.8	2	22.2	0	0	9
	* SITE TOTAL *	22	73.3	8	26.7	0	0	30
SITE 917	MADISON	6	75	2	25	0	0	8
	ST FRANCOIS	13	76.5	4	23.5	0	0	17
	STEGENEVIEVE	2	66.7	1	33.3	0	0	3
	WASHINGTON	5	50	5	50	0	0	10
	* SITE TOTAL *	26	68.4	12	31.6	0	0	38
SITE 918	STONE	5	100	0	0	0	0	5
	TANEY	10	90.9	1	9.1	0	0	11
	* SITE TOTAL *	15	93.8	1	6.3	0	0	16
SITE 919	ADAIR	17	94.4	1	5.6	0	0	18
	KNOX	2	66.7	1	33.3	0	0	3
	LEWIS	6	75	2	25	0	0	8
	* SITE TOTAL *	25	86.2	4	13.8	0	0	29
SITE 921	DUNKLIN	3	100	0	0	0	0	3
	NEW MADRID	1	100	0	0	0	0	1
	STODDARD	0	0	1	100	0	0	1
	* SITE TOTAL *	4	80	1	20	0	0	5
SITE 922	MACON	11	84.6	2	15.4	0	0	13
	SHELBY	2	100	0	0	0	0	2
	* SITE TOTAL *	13	86.7	2	13.3	0	0	15
SITE 923	CLINTON	1	100	0	0	0	0	1
	DE KALB	2	100	0	0	0	0	2
	LIVINGSTON	5	71.4	2	28.6	0	0	7
	* SITE TOTAL *	8	80	2	20	0	0	10
SITE 924	CLARK	8	100	0	0	0	0	8
	SCHUYLER	4	80	1	20	0	0	5
	SCOTLAND	5	100	0	0	0	0	5
	* SITE TOTAL *	17	94.4	1	5.6	0	0	18
SITE 925	HOWELL	4	80	1	20	0	0	5
	OREGON	2	40	3	60	0	0	5
	* SITE TOTAL *	6	60	4	40	0	0	10
<b>STATE TOTAL</b>		<b>1,494</b>	<b>86.5</b>	<b>230</b>	<b>13.3</b>	<b>4</b>	<b>0.2</b>	<b>1,728</b>

**Appendix F. Intensive In-home Services**  
**Head of Household Race For Families Accepted During Fiscal Year 2005**

SITE	COUNTY	AMER INDIAN		ASIAN		BLACK	
		NUMBER	PERCENT	NUMBER	PERCENT	NUMBER	PERCENT
SITE 701	JACKSON	1	0.5	0	0	101	46.1
	* SITE TOTAL *	1	0.5	0	0	101	46.1
SITE 702	ST LOUIS CITY	3	1	3	1	230	76.9
	ST LOUIS COUNTY	0	0	1	0.3	187	60.3
	* SITE TOTAL *	3	0.5	4	0.7	417	68.5
SITE 703	JEFFERSON	1	1.2	0	0	0	0
	* SITE TOTAL *	1	1.2	0	0	0	0
SITE 704	CHRISTIAN	1	7.1	0	0	0	0
	GREENE	1	1.3	0	0	9	12
	POLK	0	0	0	0	0	0
	WEBSTER	0	0	0	0	0	0
	* SITE TOTAL *	2	2.1	0	0	9	9.6
SITE 705	BARRY	0	0	0	0	0	0
	LAWRENCE	0	0	0	0	0	0
	MCDONALD	0	0	0	0	0	0
	NEWTON	0	0	0	0	0	0
	* SITE TOTAL *	0	0	0	0	0	0
SITE 708	BOONE	0	0	0	0	6	46.2
	CALLAWAY	0	0	0	0	2	11.8
	* SITE TOTAL *	0	0	0	0	8	26.7
SITE 710	JASPER	1	3.1	0	0	2	6.3
	* SITE TOTAL *	1	3.1	0	0	2	6.3
SITE 801	ATCHISON	0	0	0	0	0	0
	GENTRY	0	0	0	0	0	0
	HOLT	0	0	0	0	0	0
	NODAWAY	0	0	0	0	0	0
	WORTH	0	0	0	0	0	0
	* SITE TOTAL *	0	0	0	0	0	0
SITE 802	GRUNDY	0	0	0	0	0	0
	HARRISON	0	0	0	0	0	0
	MERCER	0	0	0	0	0	0
	PUTNAM	0	0	0	0	0	0
	* SITE TOTAL *	0	0	0	0	0	0
SITE 804	RANDOLPH	1	14.3	0	0	0	0
	* SITE TOTAL *	1	14.3	0	0	0	0
SITE 808	CAMDEN	0	0	0	0	0	0
	DALLAS	0	0	0	0	0	0
	HICKORY	1	33.3	0	0	0	0
	LACLEDE	0	0	0	0	0	0
	* SITE TOTAL *	1	5.9	0	0	0	0
SITE 810	MARIES	0	0	0	0	0	0
	OZARK	0	0	0	0	0	0
	PHELPS	0	0	0	0	0	0
	PULASKI	0	0	0	0	3	37.5
	TEXAS	0	0	0	0	0	0
	WRIGHT	0	0	0	0	0	0
	* SITE TOTAL *	0	0	0	0	3	10.3
SITE 811	ST CHARLES	0	0	0	0	0	0
	* SITE TOTAL *	0	0	0	0	0	0
SITE 813	CHARITON	0	0	0	0	0	0
	LINN	0	0	0	0	0	0
	SULLIVAN	0	0	0	0	0	0
	* SITE TOTAL *	0	0	0	0	0	0
SITE 815	MARION	0	0	0	0	0	0
	MONROE	0	0	0	0	0	0
	RALLS	0	0	0	0	0	0
	* SITE TOTAL *	0	0	0	0	0	0
SITE 816	LINCOLN	0	0	0	0	0	0
	PIKE	0	0	0	0	0	0
	* SITE TOTAL *	0	0	0	0	0	0
SITE 901	ANDREW	0	0	0	0	0	0
	BUCHANAN	0	0	0	0	1	5.9
	* SITE TOTAL *	0	0	0	0	1	4.5
SITE 902	CLAY	0	0	0	0	1	5.3
	LAFAYETTE	0	0	0	0	0	0
	PLATTE	0	0	0	0	0	0
	RAY	0	0	0	0	0	0
	* SITE TOTAL *	0	0	0	0	1	3.4
SITE 904	CASS	1	4	0	0	1	4
	JOHNSON	0	0	0	0	1	3.6
	* SITE TOTAL *	1	1.9	0	0	2	3.8

**Appendix F. (continued) Intensive In-home Services  
Head of Household Race For Families Accepted During Fiscal Year 2005**

SITE	COUNTY	OTHER		WHITE		TOTAL
		NUMBER	PERCENT	NUMBER	PERCENT	
SITE 701	JACKSON	3	1.4	114	52.1	219
	* SITE TOTAL *	3	1.4	114	52.1	219
SITE 702	ST LOUIS CITY	13	4.3	50	16.7	299
	ST LOUIS COUNTY	16	5.2	106	34.2	310
	* SITE TOTAL *	29	4.8	156	25.6	609
SITE 703	JEFFERSON	0	0	84	98.8	85
	* SITE TOTAL *	0	0	84	98.8	85
SITE 704	CHRISTIAN	0	0	13	92.9	14
	GREENE	6	8	59	78.7	75
	POLK	0	0	2	100	2
	WEBSTER	0	0	3	100	3
	* SITE TOTAL *	6	6.4	77	81.9	94
SITE 705	BARRY	1	8.3	11	91.7	12
	LAWRENCE	4	14.3	24	85.7	28
	MCDONALD	0	0	4	100	4
	NEWTON	1	9.1	10	90.9	11
	* SITE TOTAL *	6	10.9	49	89.1	55
SITE 708	BOONE	1	7.7	6	46.2	13
	CALLAWAY	0	0	15	88.2	17
	* SITE TOTAL *	1	3.3	21	70	30
SITE 710	JASPER	2	6.3	27	84.4	32
	* SITE TOTAL *	2	6.3	27	84.4	32
SITE 801	ATCHISON	0	0	2	100	2
	GENTRY	0	0	4	100	4
	HOLT	0	0	1	100	1
	NODAWAY	0	0	4	100	4
	WORTH	0	0	1	100	1
	* SITE TOTAL *	0	0	12	100	12
SITE 802	GRUNDY	0	0	5	100	5
	HARRISON	0	0	1	100	1
	MERCER	0	0	1	100	1
	PUTNAM	0	0	4	100	4
	* SITE TOTAL *	0	0	11	100	11
SITE 804	RANDOLPH	0	0	6	85.7	7
	* SITE TOTAL *	0	0	6	85.7	7
SITE 808	CAMDEN	0	0	7	100	7
	DALLAS	0	0	2	100	2
	HICKORY	0	0	2	66.7	3
	LACLEDE	0	0	5	100	5
	* SITE TOTAL *	0	0	16	94.1	17
SITE 810	MARIES	0	0	1	100	1
	OZARK	0	0	1	100	1
	PHELPS	0	0	6	100	6
	PULASKI	0	0	5	62.5	8
	TEXAS	0	0	7	100	7
	WRIGHT	0	0	6	100	6
	* SITE TOTAL *	0	0	26	89.7	29
SITE 811	ST CHARLES	0	0	7	100	7
	* SITE TOTAL *	0	0	7	100	7
SITE 813	CHARITON	0	0	2	100	2
	LINN	1	20	4	80	5
	SULLIVAN	0	0	3	100	3
	* SITE TOTAL *	1	10	9	90	10
SITE 815	MARION	1	14.3	6	85.7	7
	MONROE	0	0	2	100	2
	RALLS	0	0	1	100	1
	* SITE TOTAL *	1	10	9	90	10
SITE 816	LINCOLN	0	0	7	100	7
	PIKE	0	0	3	100	3
	* SITE TOTAL *	0	0	10	100	10
SITE 901	ANDREW	0	0	5	100	5
	BUCHANAN	0	0	16	94.1	17
	* SITE TOTAL *	0	0	21	95.5	22
SITE 902	CLAY	0	0	18	94.7	19
	LAFAYETTE	0	0	7	100	7
	PLATTE	0	0	2	100	2
	RAY	0	0	1	100	1
	* SITE TOTAL *	0	0	28	96.6	29
SITE 904	CASS	2	8	21	84	25
	JOHNSON	1	3.6	26	92.9	28
	* SITE TOTAL *	3	5.7	47	88.7	53

**Appendix F. (continued) Intensive In-home Services  
Head of Household Race For Families Accepted During Fiscal Year 2005**

SITE	COUNTY	AMER INDIAN		ASIAN		BLACK	
		NUMBER	PERCENT	NUMBER	PERCENT	NUMBER	PERCENT
SITE 905	COOPER	0	0	0	0	1	11.1
	PETTIS	0	0	0	0	0	0
	SALINE	0	0	0	0	3	16.7
	* SITE TOTAL *	0	0	0	0	4	9.3
SITE 907	AUDRAIN	0	0	0	0	0	0
	MONTGOMERY	0	0	0	0	0	0
	WARREN	0	0	0	0	0	0
	* SITE TOTAL *	0	0	0	0	0	0
SITE 908	FRANKLIN	0	0	0	0	1	2.9
	* SITE TOTAL *	0	0	0	0	1	2.9
SITE 909	COLE	0	0	0	0	0	0
	MILLER	0	0	0	0	0	0
	MONITEAU	1	14.3	0	0	0	0
	MORGAN	0	0	0	0	0	0
	* SITE TOTAL *	1	2.6	0	0	0	0
SITE 910	BATES	0	0	0	0	0	0
	BENTON	0	0	0	0	0	0
	HENRY	0	0	0	0	0	0
	ST CLAIR	0	0	0	0	0	0
	* SITE TOTAL *	0	0	0	0	0	0
	SITE 911	BARTON	0	0	0	0	0
SITE 913	CEDAR	0	0	0	0	0	0
	DADE	0	0	0	0	0	0
	VERNON	0	0	0	0	0	0
	* SITE TOTAL *	0	0	0	0	0	0
	CRAWFORD	0	0	0	0	0	0
SITE 915	DENT	0	0	0	0	0	0
	IRON	0	0	0	0	1	16.7
	REYNOLDS	0	0	0	0	0	0
	SHANNON	0	0	0	0	0	0
	* SITE TOTAL *	0	0	0	0	1	3.2
	BUTLER	0	0	0	0	0	0
SITE 916	CARTER	0	0	0	0	0	0
	RIPLEY	0	0	0	0	0	0
	WAYNE	0	0	0	0	0	0
	* SITE TOTAL *	0	0	0	0	0	0
	BOLLINGER	0	0	0	0	0	0
SITE 917	CAPE GIRARDEAU	1	6.3	0	0	2	12.5
	PERRY	0	0	0	0	0	0
	* SITE TOTAL *	1	3.3	0	0	2	6.7
	MADISON	0	0	0	0	0	0
SITE 918	ST FRANCOIS	0	0	0	0	0	0
	STE GENEVIEVE	0	0	0	0	0	0
	WASHINGTON	0	0	0	0	0	0
	* SITE TOTAL *	0	0	0	0	0	0
	STONE	0	0	0	0	0	0
SITE 919	TANEY	0	0	0	0	0	0
	* SITE TOTAL *	0	0	0	0	0	0
	ADAIR	0	0	0	0	0	0
	KNOX	0	0	0	0	0	0
SITE 921	LEWIS	0	0	0	0	1	12.5
	* SITE TOTAL *	0	0	0	0	1	3.4
	DUNKLIN	0	0	0	0	1	33.3
	NEW MADRID	0	0	0	0	0	0
	STODDARD	0	0	0	0	0	0
SITE 922	* SITE TOTAL *	0	0	0	0	1	20
	MACON	0	0	0	0	0	0
	SHELBY	0	0	0	0	0	0
	* SITE TOTAL *	0	0	0	0	0	0
SITE 923	CLINTON	0	0	0	0	0	0
	DE KALB	0	0	0	0	0	0
	LIVINGSTON	0	0	0	0	0	0
	* SITE TOTAL *	0	0	0	0	0	0
SITE 924	CLARK	0	0	0	0	0	0
	SCHUYLER	0	0	0	0	0	0
	SCOTLAND	0	0	0	0	0	0
	* SITE TOTAL *	0	0	0	0	0	0
SITE 925	HOWELL	1	20	0	0	0	0
	OREGON	0	0	0	0	0	0
	* SITE TOTAL *	1	10	0	0	0	0
<b>STATETOTAL</b>		<b>14</b>	<b>0.8</b>	<b>4</b>	<b>0.2</b>	<b>554</b>	<b>32.1</b>

**Appendix F. (continued) Intensive In-home Services  
Head of Household Race For Families Accepted During Fiscal Year 2005**

SITE	COUNTY	OTHER		WHITE		TOTAL
		NUMBER	PERCENT	NUMBER	PERCENT	
SITE 905	COOPER	0	0	8	88.9	9
	PETTIS	1	6.3	15	93.8	16
	SALINE	0	0	15	83.3	18
	* SITE TOTAL *	1	2.3	38	88.4	43
SITE 907	AUDRAIN	1	9.1	10	90.9	11
	MONTGOMERY	0	0	5	100	5
	WARREN	1	12.5	7	87.5	8
	* SITE TOTAL *	2	8.3	22	91.7	24
SITE 908	FRANKLIN	0	0	33	97.1	34
	* SITE TOTAL *	0	0	33	97.1	34
SITE 909	COLE	0	0	11	100	11
	MILLER	0	0	10	100	10
	MONITEAU	1	14.3	5	71.4	7
	MORGAN	2	20	8	80	10
	* SITE TOTAL *	3	7.9	34	89.5	38
SITE 910	BATES	1	20	4	80	5
	BENTON	0	0	4	100	4
	HENRY	0	0	4	100	4
	ST CLAIR	0	0	4	100	4
	* SITE TOTAL *	1	5.9	16	94.1	17
SITE 911	BARTON	0	0	1	100	1
	CEDAR	0	0	1	100	1
	DADE	0	0	4	100	4
	VERNON	0	0	5	100	5
	* SITE TOTAL *	0	0	11	100	11
SITE 913	CRAWFORD	0	0	14	100	14
	DENT	0	0	6	100	6
	IRON	0	0	5	83.3	6
	REYNOLDS	0	0	4	100	4
	SHANNON	0	0	1	100	1
	* SITE TOTAL *	0	0	30	96.8	31
SITE 915	BUTLER	0	0	12	100	12
	CARTER	0	0	2	100	2
	RIPLEY	0	0	1	100	1
	WAYNE	0	0	3	100	3
	* SITE TOTAL *	0	0	18	100	18
SITE 916	BOLLINGER	0	0	5	100	5
	CAPE GIRARDEAU	1	6.3	12	75	16
	PERRY	0	0	9	100	9
	* SITE TOTAL *	1	3.3	26	86.7	30
SITE 917	MADISON	1	12.5	7	87.5	8
	ST FRANCOIS	0	0	17	100	17
	STE GENEVIEVE	0	0	3	100	3
	WASHINGTON	1	10	9	90	10
	* SITE TOTAL *	2	5.3	36	94.7	38
SITE 918	STONE	0	0	5	100	5
	TANEY	1	9.1	10	90.9	11
	* SITE TOTAL *	1	6.3	15	93.8	16
SITE 919	ADAIR	2	11.1	16	88.9	18
	KNOX	0	0	3	100	3
	LEWIS	0	0	7	87.5	8
	* SITE TOTAL *	2	6.9	26	89.7	29
SITE 921	DUNKLIN	0	0	2	66.7	3
	NEW MADRID	0	0	1	100	1
	STODDARD	0	0	1	100	1
	* SITE TOTAL *	0	0	4	80	5
SITE 922	MACON	0	0	13	100	13
	SHELBY	0	0	2	100	2
	* SITE TOTAL *	0	0	15	100	15
SITE 923	CLINTON	0	0	1	100	1
	DE KALB	0	0	2	100	2
	LIVINGSTON	0	0	7	100	7
	* SITE TOTAL *	0	0	10	100	10
SITE 924	CLARK	0	0	8	100	8
	SCHUYLER	0	0	5	100	5
	SCOTLAND	0	0	5	100	5
	* SITE TOTAL *	0	0	18	100	18
SITE 925	HOWELL	0	0	4	80	5
	OREGON	0	0	5	100	5
	* SITE TOTAL *	0	0	9	90	10
<b>STATETOTAL</b>		<b>65</b>	<b>3.8</b>	<b>1,091</b>	<b>63.1</b>	<b>1,728</b>

**Appendix G. Intensive In-home Services  
Head of Household Employment For Families Accepted During Fiscal Year 2005**

SITE	COUNTY	FULL-TIME		PART-TIME		UNEMPLOYED		TOTAL
		NUMBER	PERCENT	NUMBER	PERCENT	NUMBER	PERCENT	
SITE 701	JACKSON	56	25.6	25	11.4	138	63	219
	* SITE TOTAL *	56	25.6	25	11.4	138	63	219
SITE 702	ST LOUIS CITY	108	36.1	34	11.4	157	52.5	299
	ST LOUIS COUNTY	149	48.1	29	9.4	132	42.6	310
	* SITE TOTAL *	257	42.2	63	10.3	289	47.5	609
SITE 703	JEFFERSON	41	48.2	8	9.4	36	42.4	85
	* SITE TOTAL *	41	48.2	8	9.4	36	42.4	85
SITE 704	CHRISTIAN	4	28.6	2	14.3	8	57.1	14
	GREENE	16	21.3	9	12	50	66.7	75
	POLK	1	50	0	0	1	50	2
	WEBSTER	0	0	0	0	3	100	3
	* SITE TOTAL *	21	22.3	11	11.7	62	66	94
SITE 705	BARRY	0	0	0	0	12	100	12
	LAWRENCE	9	32.1	4	14.3	15	53.6	28
	MCDONALD	0	0	0	0	4	100	4
	NEWTON	3	27.3	1	9.1	7	63.6	11
	* SITE TOTAL *	12	21.8	5	9.1	38	69.1	55
SITE 708	BOONE	5	38.5	2	15.4	6	46.2	13
	CALLAWAY	7	41.2	3	17.6	7	41.2	17
	* SITE TOTAL *	12	40	5	16.7	13	43.3	30
SITE 710	JASPER	10	31.3	3	9.4	19	59.4	32
	* SITE TOTAL *	10	31.3	3	9.4	19	59.4	32
SITE 801	ATCHISON	0	0	0	0	2	100	2
	GENTRY	2	50	0	0	2	50	4
	HOLT	1	100	0	0	0	0	1
	NODAWAY	1	25	1	25	2	50	4
	WORTH	0	0	0	0	1	100	1
	* SITE TOTAL *	4	33.3	1	8.3	7	58.3	12
SITE 802	GRUNDY	3	60	0	0	2	40	5
	HARRISON	0	0	0	0	1	100	1
	MERCER	0	0	1	100	0	0	1
	PUTNAM	2	50	1	25	1	25	4
	* SITE TOTAL *	5	45.5	2	18.2	4	36.4	11
SITE 804	RANDOLPH	3	42.9	0	0	4	57.1	7
	* SITE TOTAL *	3	42.9	0	0	4	57.1	7
SITE 808	CAMDEN	3	42.9	0	0	4	57.1	7
	DALLAS	1	50	0	0	1	50	2
	HICKORY	1	33.3	0	0	2	66.7	3
	LACLEDE	2	40	0	0	3	60	5
	* SITE TOTAL *	7	41.2	0	0	10	58.8	17
SITE 810	MARIES	0	0	0	0	1	100	1
	OZARK	0	0	0	0	1	100	1
	PHELPS	2	33.3	0	0	4	66.7	6
	PULASKI	4	50	1	12.5	3	37.5	8
	TEXAS	3	42.9	0	0	4	57.1	7
	WRIGHT	0	0	1	16.7	5	83.3	6
	* SITE TOTAL *	9	31	2	6.9	18	62.1	29
SITE 811	ST CHARLES	1	14.3	0	0	6	85.7	7
	* SITE TOTAL *	1	14.3	0	0	6	85.7	7
SITE 813	CHARITON	0	0	0	0	2	100	2
	LINN	1	20	0	0	4	80	5
	SULLIVAN	3	100	0	0	0	0	3
	* SITE TOTAL *	4	40	0	0	6	60	10
SITE 815	MARION	4	57.1	0	0	3	42.9	7
	MONROE	1	50	0	0	1	50	2
	RALLS	0	0	0	0	1	100	1
	* SITE TOTAL *	5	50	0	0	5	50	10
SITE 816	LINCOLN	2	28.6	0	0	5	71.4	7
	PIKE	0	0	1	33.3	2	66.7	3
	* SITE TOTAL *	2	20	1	10	7	70	10
SITE 901	ANDREW	2	40	0	0	3	60	5
	BUCHANAN	4	23.5	6	35.3	7	41.2	17
	* SITE TOTAL *	6	27.3	6	27.3	10	45.5	22
SITE 902	CLAY	6	31.6	2	10.5	11	57.9	19
	LAFAYETTE	5	71.4	0	0	2	28.6	7
	PLATTE	0	0	0	0	2	100	2
	RAY	0	0	0	0	1	100	1
	* SITE TOTAL *	11	37.9	2	6.9	16	55.2	29
SITE 904	CASS	14	56	3	12	8	32	25
	JOHNSON	8	28.6	2	7.1	18	64.3	28
	* SITE TOTAL *	22	41.5	5	9.4	26	49.1	53

**Appendix G. (continued) Intensive In-home Services  
Head of Household Employment For Families Accepted During Fiscal Year 2005**

SITE	COUNTY	FULL-TIME		PART-TIME		UNEMPLOYED		TOTAL
		NUMBER	PERCENT	NUMBER	PERCENT	NUMBER	PERCENT	
SITE 905	COOPER	5	55.6	0	0	4	44.4	9
	PETTIS	7	43.8	1	6.3	8	50	16
	SALINE	8	44.4	2	11.1	8	44.4	18
	* SITE TOTAL *	20	46.5	3	7	20	46.5	43
SITE 907	AUDRAIN	6	54.5	0	0	5	45.5	11
	MONTGOMERY	1	20	1	20	3	60	5
	WARREN	7	87.5	0	0	1	12.5	8
	* SITE TOTAL *	14	58.3	1	4.2	9	37.5	24
SITE 908	FRANKLIN	9	26.5	3	8.8	22	64.7	34
	* SITE TOTAL *	9	26.5	3	8.8	22	64.7	34
SITE 909	COLE	3	27.3	0	0	8	72.7	11
	MILLER	4	40	2	20	4	40	10
	MONITEAU	4	57.1	0	0	3	42.9	7
	MORGAN	6	60	1	10	3	30	10
	* SITE TOTAL *	17	44.7	3	7.9	18	47.4	38
SITE 910	BATES	3	60	0	0	2	40	5
	BENTON	0	0	0	0	4	100	4
	HENRY	2	50	0	0	2	50	4
	ST CLAIR	4	100	0	0	0	0	4
	* SITE TOTAL *	9	52.9	0	0	8	47.1	17
SITE 911	BARTON	0	0	0	0	1	100	1
	CEDAR	0	0	0	0	1	100	1
	DADE	1	25	0	0	3	75	4
	VERNON	1	20	1	20	3	60	5
	* SITE TOTAL *	2	18.2	1	9.1	8	72.7	11
SITE 913	CRAWFORD	4	28.6	0	0	10	71.4	14
	DENT	1	16.7	1	16.7	4	66.7	6
	IRON	1	16.7	0	0	5	83.3	6
	REYNOLDS	1	25	0	0	3	75	4
	SHANNON	0	0	0	0	1	100	1
	* SITE TOTAL *	7	22.6	1	3.2	23	74.2	31
SITE 915	BUTLER	1	8.3	0	0	11	91.7	12
	CARTER	0	0	0	0	2	100	2
	RIPLEY	1	100	0	0	0	0	1
	WAYNE	0	0	1	33.3	2	66.7	3
	* SITE TOTAL *	2	11.1	1	5.6	15	83.3	18
SITE 916	BOLLINGER	2	40	0	0	3	60	5
	CAPE GIRARDEAU	7	43.8	1	6.3	8	50	16
	PERRY	5	55.6	0	0	4	44.4	9
	* SITE TOTAL *	14	46.7	1	3.3	15	50	30
SITE 917	MADISON	2	25	0	0	6	75	8
	ST FRANCOIS	3	17.6	0	0	14	82.4	17
	STE GENEVIEVE	0	0	3	100	0	0	3
	WASHINGTON	1	10	1	10	8	80	10
	* SITE TOTAL *	6	15.8	4	10.5	28	73.7	38
SITE 918	STONE	4	80	0	0	1	20	5
	TANEY	3	27.3	0	0	8	72.7	11
	* SITE TOTAL *	7	43.8	0	0	9	56.3	16
SITE 919	ADAIR	8	44.4	0	0	10	55.6	18
	KNOX	1	33.3	0	0	2	66.7	3
	LEWIS	3	37.5	1	12.5	4	50	8
	* SITE TOTAL *	12	41.4	1	3.4	16	55.2	29
SITE 921	DUNKLIN	1	33.3	0	0	2	66.7	3
	NEW MADRID	0	0	0	0	1	100	1
	STODDARD	1	100	0	0	0	0	1
	* SITE TOTAL *	2	40	0	0	3	60	5
SITE 922	MACON	4	30.8	1	7.7	8	61.5	13
	SHELBY	0	0	0	0	2	100	2
	* SITE TOTAL *	4	26.7	1	6.7	10	66.7	15
SITE 923	CLINTON	0	0	0	0	1	100	1
	DE KALB	1	50	0	0	1	50	2
	LIVINGSTON	0	0	1	14.3	6	85.7	7
	* SITE TOTAL *	1	10	1	10	8	80	10
SITE 924	CLARK	1	12.5	2	25	5	62.5	8
	SCHUYLER	3	60	1	20	1	20	5
	SCOTLAND	2	40	1	20	2	40	5
	* SITE TOTAL *	6	33.3	4	22.2	8	44.4	18
SITE 925	HOWELL	2	40	1	20	2	40	5
	OREGON	0	0	0	0	5	100	5
	* SITE TOTAL *	2	20	1	10	7	70	10
<b>STATETOTAL</b>		<b>622</b>	<b>36</b>	<b>165</b>	<b>9.5</b>	<b>941</b>	<b>54.5</b>	<b>1,728</b>



**Appendix H. Intensive In-home Services**  
**Head of Household Income For Families Accepted During Fiscal Year 2005**

SITE	COUNTY	< \$5,000		\$5,000-\$9,999		\$10,000-\$14,999		\$15,000-\$24,999	
		NUMBER	PERCENT	NUMBER	PERCENT	NUMBER	PERCENT	NUMBER	PERCENT
SITE 701	JACKSON	56	25.6	46	21	36	16.4	40	18.3
	* SITE TOTAL *	56	25.6	46	21	36	16.4	40	18.3
SITE 702	ST LOUIS CITY	57	19.1	73	24.4	64	21.4	58	19.4
	ST LOUIS COUNTY	30	9.7	49	15.8	60	19.4	75	24.2
	* SITE TOTAL *	87	14.3	122	20	124	20.4	133	21.8
SITE 703	JEFFERSON	9	10.6	12	14.1	16	18.8	17	20
	* SITE TOTAL *	9	10.6	12	14.1	16	18.8	17	20
SITE 704	CHRISTIAN	2	14.3	1	7.1	3	21.4	6	42.9
	GREENE	33	44	8	10.7	12	16	12	16
	POLK	0	0	0	0	0	0	2	100
	WEBSTER	2	66.7	0	0	0	0	1	33.3
	* SITE TOTAL *	37	39.4	9	9.6	15	16	21	22.3
SITE 705	BARRY	3	25	3	25	3	25	3	25
	LAWRENCE	3	10.7	5	17.9	9	32.1	3	10.7
	MCDONALD	0	0	1	25	0	0	3	75
	NEWTON	1	9.1	3	27.3	2	18.2	4	36.4
	* SITE TOTAL *	7	12.7	12	21.8	14	25.5	13	23.6
SITE 708	BOONE	1	7.7	6	46.2	0	0	4	30.8
	CALLAWAY	2	11.8	2	11.8	2	11.8	6	35.3
	* SITE TOTAL *	3	10	8	26.7	2	6.7	10	33.3
SITE 710	JASPER	7	21.9	9	28.1	7	21.9	5	15.6
	* SITE TOTAL *	7	21.9	9	28.1	7	21.9	5	15.6
SITE 801	ATCHISON	0	0	1	50	1	50	0	0
	GENTRY	1	25	0	0	2	50	1	25
	HOLT	0	0	0	0	1	100	0	0
	NODAWAY	0	0	2	50	1	25	1	25
	WORTH	0	0	1	100	0	0	0	0
	* SITE TOTAL *	1	8.3	4	33.3	5	41.7	2	16.7
SITE 802	GRUNDY	0	0	3	60	1	20	1	20
	HARRISON	0	0	1	100	0	0	0	0
	MERCER	0	0	0	0	0	0	0	0
	PUTNAM	1	25	1	25	0	0	2	50
	* SITE TOTAL *	1	9.1	5	45.5	1	9.1	3	27.3
SITE 804	RANDOLPH	2	28.6	1	14.3	1	14.3	2	28.6
	* SITE TOTAL *	2	28.6	1	14.3	1	14.3	2	28.6
SITE 808	CAMDEN	0	0	3	42.9	1	14.3	3	42.9
	DALLAS	0	0	0	0	1	50	0	0
	HICKORY	0	0	0	0	1	33.3	2	66.7
	LACLEDE	1	20	0	0	2	40	2	40
	* SITE TOTAL *	1	5.9	3	17.6	5	29.4	7	41.2
SITE 810	MARIES	0	0	1	100	0	0	0	0
	OZARK	0	0	1	100	0	0	0	0
	PHELPS	1	16.7	1	16.7	0	0	2	33.3
	PULASKI	4	50	0	0	2	25	2	25
	TEXAS	5	71.4	1	14.3	0	0	0	0
	WRIGHT	2	33.3	1	16.7	2	33.3	1	16.7
	* SITE TOTAL *	12	41.4	5	17.2	4	13.8	5	17.2
SITE 811	ST CHARLES	1	14.3	3	42.9	0	0	0	0
	* SITE TOTAL *	1	14.3	3	42.9	0	0	0	0
SITE 813	CHARITON	0	0	1	50	0	0	1	50
	LINN	0	0	0	0	1	20	2	40
	SULLIVAN	0	0	0	0	0	0	3	100
	* SITE TOTAL *	0	0	1	10	1	10	6	60
SITE 815	MARION	1	14.3	2	28.6	2	28.6	1	14.3
	MONROE	1	50	0	0	0	0	0	0
	RALLS	0	0	1	100	0	0	0	0
	* SITE TOTAL *	2	20	3	30	2	20	1	10
SITE 816	LINCOLN	3	42.9	1	14.3	1	14.3	0	0
	PIKE	1	33.3	1	33.3	1	33.3	0	0
	* SITE TOTAL *	4	40	2	20	2	20	0	0
SITE 901	ANDREW	0	0	0	0	1	20	2	40
	BUCHANAN	4	23.5	0	0	4	23.5	5	29.4
	* SITE TOTAL *	4	18.2	0	0	5	22.7	7	31.8
SITE 902	CLAY	2	10.5	7	36.8	3	15.8	3	15.8
	LAFAYETTE	0	0	1	14.3	2	28.6	1	14.3
	PLATTE	2	100	0	0	0	0	0	0
	RAY	1	100	0	0	0	0	0	0
	* SITE TOTAL *	5	17.2	8	27.6	5	17.2	4	13.8
SITE 904	CASS	1	4	4	16	3	12	3	12
	JOHNSON	3	10.7	9	32.1	5	17.9	5	17.9
	* SITE TOTAL *	4	7.5	13	24.5	8	15.1	8	15.1

**Appendix H. (continued) Intensive In-home Services  
Head of Household Income For Families Accepted During Fiscal Year 2005**

SITE	COUNTY	\$25,000-\$34,999		\$35,000-\$49,999		>\$50,000		TOTAL
		NUMBER	PERCENT	NUMBER	PERCENT	NUMBER	PERCENT	
SITE 701	JACKSON	21	9.6	12	5.5	8	3.7	219
	* SITE TOTAL *	21	9.6	12	5.5	8	3.7	219
SITE 702	ST LOUIS CITY	23	7.7	18	6	6	2	299
	ST LOUIS COUNTY	48	15.5	26	8.4	22	7.1	310
	* SITE TOTAL *	71	11.7	44	7.2	28	4.6	609
SITE 703	JEFFERSON	12	14.1	11	12.9	8	9.4	85
	* SITE TOTAL *	12	14.1	11	12.9	8	9.4	85
SITE 704	CHRISTIAN	2	14.3	0	0	0	0	14
	GREENE	7	9.3	1	1.3	2	2.7	75
	POLK	0	0	0	0	0	0	2
	WEBSTER	0	0	0	0	0	0	3
	* SITE TOTAL *	9	9.6	1	1.1	2	2.1	94
SITE 705	BARRY	0	0	0	0	0	0	12
	LAWRENCE	4	14.3	2	7.1	2	7.1	28
	MCDONALD	0	0	0	0	0	0	4
	NEWTON	1	9.1	0	0	0	0	11
	* SITE TOTAL *	5	9.1	2	3.6	2	3.6	55
SITE 708	BOONE	1	7.7	0	0	1	7.7	13
	CALLAWAY	3	17.6	1	5.9	1	5.9	17
	* SITE TOTAL *	4	13.3	1	3.3	2	6.7	30
SITE 710	JASPER	3	9.4	0	0	1	3.1	32
	* SITE TOTAL *	3	9.4	0	0	1	3.1	32
SITE 801	ATCHISON	0	0	0	0	0	0	2
	GENTRY	0	0	0	0	0	0	4
	HOLT	0	0	0	0	0	0	1
	NODAWAY	0	0	0	0	0	0	4
	WORTH	0	0	0	0	0	0	1
	* SITE TOTAL *	0	0	0	0	0	0	12
SITE 802	GRUNDY	0	0	0	0	0	0	5
	HARRISON	0	0	0	0	0	0	1
	MERCER	1	100	0	0	0	0	1
	PUTNAM	0	0	0	0	0	0	4
	* SITE TOTAL *	1	9.1	0	0	0	0	11
SITE 804	RANDOLPH	0	0	1	14.3	0	0	7
	* SITE TOTAL *	0	0	1	14.3	0	0	7
SITE 808	CAMDEN	0	0	0	0	0	0	7
	DALLAS	1	50	0	0	0	0	2
	HICKORY	0	0	0	0	0	0	3
	LACLEDE	0	0	0	0	0	0	5
	* SITE TOTAL *	1	5.9	0	0	0	0	17
SITE 810	MARIES	0	0	0	0	0	0	1
	OZARK	0	0	0	0	0	0	1
	PHELPS	1	16.7	1	16.7	0	0	6
	PULASKI	0	0	0	0	0	0	8
	TEXAS	1	14.3	0	0	0	0	7
	WRIGHT	0	0	0	0	0	0	6
	* SITE TOTAL *	2	6.9	1	3.4	0	0	29
SITE 811	ST CHARLES	2	28.6	0	0	1	14.3	7
	* SITE TOTAL *	2	28.6	0	0	1	14.3	7
SITE 813	CHARITON	0	0	0	0	0	0	2
	LINN	2	40	0	0	0	0	5
	SULLIVAN	0	0	0	0	0	0	3
	* SITE TOTAL *	2	20	0	0	0	0	10
SITE 815	MARION	0	0	1	14.3	0	0	7
	MONROE	1	50	0	0	0	0	2
	RALLS	0	0	0	0	0	0	1
	* SITE TOTAL *	1	10	1	10	0	0	10
SITE 816	LINCOLN	1	14.3	1	14.3	0	0	7
	PIKE	0	0	0	0	0	0	3
	* SITE TOTAL *	1	10	1	10	0	0	10
SITE 901	ANDREW	1	20	1	20	0	0	5
	BUCHANAN	3	17.6	0	0	1	5.9	17
	* SITE TOTAL *	4	18.2	1	4.5	1	4.5	22
SITE 902	CLAY	2	10.5	1	5.3	1	5.3	19
	LAFAYETTE	1	14.3	1	14.3	1	14.3	7
	PLATTE	0	0	0	0	0	0	2
	RAY	0	0	0	0	0	0	1
	* SITE TOTAL *	3	10.3	2	6.9	2	6.9	29
SITE 904	CASS	6	24	2	8	6	24	25
	JOHNSON	3	10.7	3	10.7	0	0	28
	* SITE TOTAL *	9	17	5	9.4	6	11.3	53

**Appendix H. (continued) Intensive In-home Services  
Head of Household Income For Families Accepted During Fiscal Year 2005**

SITE	COUNTY	< \$5,000		\$5,000-\$9,999		\$10,000-\$14,999		\$15,000-\$24,999	
		NUMBER	PERCENT	NUMBER	PERCENT	NUMBER	PERCENT	NUMBER	PERCENT
SITE 905	COOPER	3	33.3	3	33.3	1	11.1	1	11.1
	PETTIS	1	6.3	6	37.5	7	43.8	0	0
	SALINE	0	0	7	38.9	5	27.8	3	16.7
	* SITE TOTAL *	4	9.3	16	37.2	13	30.2	4	9.3
SITE 907	AUDRAIN	3	27.3	1	9.1	2	18.2	1	9.1
	MONTGOMERY	0	0	2	40	1	20	2	40
	WARREN	0	0	1	12.5	3	37.5	3	37.5
	* SITE TOTAL *	3	12.5	4	16.7	6	25	6	25
SITE 908	FRANKLIN	9	26.5	5	14.7	6	17.6	8	23.5
	* SITE TOTAL *	9	26.5	5	14.7	6	17.6	8	23.5
SITE 909	COLE	1	9.1	4	36.4	0	0	2	18.2
	MILLER	3	30	2	20	1	10	3	30
	MONITEAU	0	0	1	14.3	0	0	3	42.9
	MORGAN	0	0	1	10	3	30	3	30
	* SITE TOTAL *	4	10.5	8	21.1	4	10.5	11	28.9
SITE 910	BATES	1	20	2	40	1	20	0	0
	BENTON	2	50	2	50	0	0	0	0
	HENRY	1	25	0	0	1	25	0	0
	ST CLAIR	1	25	2	50	0	0	0	0
	* SITE TOTAL *	5	29.4	6	35.3	2	11.8	0	0
SITE 911	BARTON	1	100	0	0	0	0	0	0
	CEDAR	0	0	0	0	0	0	1	100
	DADE	2	50	1	25	0	0	0	0
SITE 911	VERNON	1	20	3	60	0	0	0	0
	* SITE TOTAL *	4	36.4	4	36.4	0	0	1	9.1
SITE 913	CRAWFORD	0	0	7	50	3	21.4	3	21.4
	DENT	1	16.7	1	16.7	2	33.3	1	16.7
	IRON	0	0	3	50	2	33.3	1	16.7
	REYNOLDS	1	25	0	0	1	25	2	50
	SHANNON	0	0	0	0	0	0	1	100
	* SITE TOTAL *	2	6.5	11	35.5	8	25.8	8	25.8
SITE 915	BUTLER	3	25	2	16.7	3	25	2	16.7
	CARTER	1	50	0	0	0	0	0	0
	RIPLEY	0	0	0	0	0	0	0	0
	WAYNE	1	33.3	1	33.3	0	0	1	33.3
	* SITE TOTAL *	5	27.8	3	16.7	3	16.7	3	16.7
SITE 916	BOLLINGER	1	20	0	0	1	20	1	20
	CAPE GIRARDEAU	2	12.5	2	12.5	2	12.5	4	25
	PERRY	2	22.2	2	22.2	2	22.2	2	22.2
	* SITE TOTAL *	5	16.7	4	13.3	5	16.7	7	23.3
SITE 917	MADISON	2	25	0	0	0	0	5	62.5
	STFRANCOIS	2	11.8	2	11.8	6	35.3	5	29.4
	STEGENEVIEVE	0	0	0	0	1	33.3	1	33.3
	WASHINGTON	2	20	1	10	1	10	2	20
	* SITE TOTAL *	6	15.8	3	7.9	8	21.1	13	34.2
SITE 918	STONE	1	20	1	20	1	20	1	20
	TANEY	3	27.3	4	36.4	2	18.2	2	18.2
	* SITE TOTAL *	4	25	5	31.3	3	18.8	3	18.8
SITE 919	ADAIR	4	22.2	2	11.1	2	11.1	6	33.3
	KNOX	1	33.3	1	33.3	0	0	1	33.3
	LEWIS	1	12.5	1	12.5	4	50	0	0
	* SITE TOTAL *	6	20.7	4	13.8	6	20.7	7	24.1
SITE 921	DUNKLIN	0	0	2	66.7	0	0	0	0
	NEW MADRID	0	0	1	100	0	0	0	0
	STODDARD	0	0	0	0	0	0	0	0
	* SITE TOTAL *	0	0	3	60	0	0	0	0
SITE 922	MACON	0	0	2	15.4	2	15.4	6	46.2
	SHELBY	0	0	1	50	0	0	0	0
	* SITE TOTAL *	0	0	3	20	2	13.3	6	40
SITE 923	CLINTON	0	0	0	0	0	0	0	0
	DE KALB	1	50	1	50	0	0	0	0
	LIVINGSTON	3	42.9	1	14.3	2	28.6	1	14.3
	* SITE TOTAL *	4	40	2	20	2	20	1	10
SITE 924	CLARK	2	25	2	25	1	12.5	2	25
	SCHUYLER	0	0	1	20	1	20	2	40
	SCOTLAND	0	0	2	40	0	0	0	0
	* SITE TOTAL *	2	11.1	5	27.8	2	11.1	4	22.2
SITE 925	HOWELL	0	0	1	20	1	20	2	40
	OREGON	0	0	1	20	0	0	4	80
	* SITE TOTAL *	0	0	2	20	1	10	6	60
<b>STATETOTAL</b>		<b>306</b>	<b>17.7</b>	<b>354</b>	<b>20.5</b>	<b>324</b>	<b>18.8</b>	<b>372</b>	<b>21.5</b>

**Appendix H. (continued) Intensive In-home Services  
Head of Household Income For Families Accepted During Fiscal Year 2005**

SITE	COUNTY	\$25,000-\$34,999		\$35,000-\$49,999		>\$50,000		TOTAL
		NUMBER	PERCENT	NUMBER	PERCENT	NUMBER	PERCENT	
SITE 905	COOPER	1	11.1	0	0	0	0	9
	PETTIS	1	6.3	1	6.3	0	0	16
	SALINE	0	0	3	16.7	0	0	18
	* SITE TOTAL *	2	4.7	4	9.3	0	0	43
SITE 907	AUDRAIN	1	9.1	2	18.2	1	9.1	11
	MONTGOMERY	0	0	0	0	0	0	5
	WARREN	1	12.5	0	0	0	0	8
	* SITE TOTAL *	2	8.3	2	8.3	1	4.2	24
SITE 908	FRANKLIN	4	11.8	1	2.9	1	2.9	34
	* SITE TOTAL *	4	11.8	1	2.9	1	2.9	34
SITE 909	COLE	2	18.2	1	9.1	1	9.1	11
	MILLER	1	10	0	0	0	0	10
	MONITEAU	2	28.6	1	14.3	0	0	7
	MORGAN	2	20	1	10	0	0	10
	* SITE TOTAL *	7	18.4	3	7.9	1	2.6	38
SITE 910	BATES	0	0	1	20	0	0	5
	BENTON	0	0	0	0	0	0	4
	HENRY	0	0	1	25	1	25	4
	ST CLAIR	1	25	0	0	0	0	4
	* SITE TOTAL *	1	5.9	2	11.8	1	5.9	17
SITE 911	BARTON	0	0	0	0	0	0	1
	CEDAR	0	0	0	0	0	0	1
	DADE	1	25	0	0	0	0	4
	VERNON	1	20	0	0	0	0	5
SITE 911	* SITE TOTAL *	2	18.2	0	0	0	0	11
	CRAWFORD	1	7.1	0	0	0	0	14
SITE 913	DENT	1	16.7	0	0	0	0	6
	IRON	0	0	0	0	0	0	6
	REYNOLDS	0	0	0	0	0	0	4
	SHANNON	0	0	0	0	0	0	1
	* SITE TOTAL *	2	6.5	0	0	0	0	31
	BUTLER	1	8.3	1	8.3	0	0	12
	CARTER	0	0	1	50	0	0	2
SITE 915	RIPLEY	0	0	1	100	0	0	1
	WAYNE	0	0	0	0	0	0	3
	* SITE TOTAL *	1	5.6	3	16.7	0	0	18
	BOLLINGER	1	20	1	20	0	0	5
SITE 916	CAPE GIRARDEAU	2	12.5	1	6.3	3	18.8	16
	PERRY	1	11.1	0	0	0	0	9
	* SITE TOTAL *	4	13.3	2	6.7	3	10	30
	MADISON	0	0	1	12.5	0	0	8
SITE 917	STFRANCOIS	1	5.9	0	0	1	5.9	17
	STEGENEVIEVE	0	0	0	0	1	33.3	3
	WASHINGTON	3	30	1	10	0	0	10
	* SITE TOTAL *	4	10.5	2	5.3	2	5.3	38
	STONE	1	20	0	0	0	0	5
SITE 918	TANEY	0	0	0	0	0	0	11
	* SITE TOTAL *	1	6.3	0	0	0	0	16
	ADAIR	3	16.7	0	0	1	5.6	18
SITE 919	KNOX	0	0	0	0	0	0	3
	LEWIS	1	12.5	0	0	1	12.5	8
	* SITE TOTAL *	4	13.8	0	0	2	6.9	29
	DUNKLIN	1	33.3	0	0	0	0	3
SITE 921	NEW MADRID	0	0	0	0	0	0	1
	STODDARD	1	100	0	0	0	0	1
	* SITE TOTAL *	2	40	0	0	0	0	5
	MACON	1	7.7	0	0	2	15.4	13
SITE 922	SHELBY	1	50	0	0	0	0	2
	* SITE TOTAL *	2	13.3	0	0	2	13.3	15
	CLINTON	1	100	0	0	0	0	1
SITE 923	DE KALB	0	0	0	0	0	0	2
	LIVINGSTON	0	0	0	0	0	0	7
	* SITE TOTAL *	1	10	0	0	0	0	10
	CLARK	0	0	1	12.5	0	0	8
SITE 924	SCHUYLER	0	0	1	20	0	0	5
	SCOTLAND	1	20	1	20	1	20	5
	* SITE TOTAL *	1	5.6	3	16.7	1	5.6	18
	HOWELL	0	0	1	20	0	0	5
SITE 925	OREGON	0	0	0	0	0	0	5
	* SITE TOTAL *	0	0	1	10	0	0	10
	<b>STATE TOTAL</b>	<b>191</b>	<b>11.1</b>	<b>106</b>	<b>6.1</b>	<b>75</b>	<b>4.3</b>	<b>1,728</b>

**Appendix I. Intensive In-home Services  
Age of At-risk Children Accepted During Fiscal Year 2005**

SITE	COUNTY	<1	1-5	6-12	>=13	NOT REPORTED	TOTAL
SITE 701	JACKSON	57	162	191	94	1	505
	* SITE TOTAL *	57	162	191	94	1	505
SITE 702	ST LOUIS CITY	27	126	232	201	0	586
	ST LOUIS COUNTY	32	90	208	226	1	557
	* SITE TOTAL *	59	216	440	427	1	1,143
SITE 703	JEFFERSON	14	52	60	53	1	180
	* SITE TOTAL *	14	52	60	53	1	180
SITE 704	CHRISTIAN	3	10	9	6	0	28
	GREENE	25	41	40	26	0	132
	POLK	0	0	1	1	0	2
	WEBSTER	1	3	2	1	0	7
	* SITE TOTAL *	29	54	52	34	0	169
SITE 705	BARRY	3	8	9	2	0	22
	LAWRENCE	3	8	17	20	0	48
	MCDONALD	0	1	4	0	0	5
	NEWTON	0	8	8	5	0	21
	* SITE TOTAL *	6	25	38	27	0	96
SITE 708	BOONE	3	5	9	8	0	25
	CALLAWAY	4	9	14	12	0	39
	* SITE TOTAL *	7	14	23	20	0	64
SITE 710	JASPER	7	27	29	20	1	84
	* SITE TOTAL *	7	27	29	20	1	84
SITE 801	ATCHISON	2	2	0	0	0	4
	GENTRY	1	3	3	3	0	10
	HOLT	0	0	1	0	0	1
	NODAWAY	2	6	2	0	0	10
	WORTH	0	0	1	0	0	1
	* SITE TOTAL *	5	11	7	3	0	26
SITE 802	GRUNDY	2	5	2	1	0	10
	HARRISON	0	0	1	0	0	1
	MERCER	0	2	0	0	0	2
	PUTNAM	2	2	1	1	0	6
	* SITE TOTAL *	4	9	4	2	0	19
SITE 804	RANDOLPH	0	10	5	3	1	19
	* SITE TOTAL *	0	10	5	3	1	19
SITE 808	CAMDEN	4	6	5	1	0	16
	DALLAS	0	1	3	1	0	5
	HICKORY	1	0	3	0	0	4
	LACLEDE	1	5	7	0	0	13
	* SITE TOTAL *	6	12	18	2	0	38
SITE 810	MARIES	0	0	0	2	0	2
	OZARK	0	2	0	0	0	2
	PHELPS	1	1	6	2	0	10
	PULASKI	2	4	1	4	0	11
	TEXAS	1	5	8	1	0	15
	WRIGHT	2	2	2	2	0	8
	* SITE TOTAL *	6	14	17	11	0	48
SITE 811	ST CHARLES	0	5	5	3	0	13
	* SITE TOTAL *	0	5	5	3	0	13
SITE 813	CHARITON	0	0	4	1	0	5
	LINN	0	0	9	1	0	10
	SULLIVAN	0	0	4	1	0	5
	* SITE TOTAL *	0	0	17	3	0	20
SITE 815	MARION	1	2	3	3	0	9
	MONROE	1	0	2	1	0	4
	RALLS	1	1	0	0	0	2
	* SITE TOTAL *	3	3	5	4	0	15
SITE 816	LINCOLN	1	4	8	5	0	18
	PIKE	0	2	1	1	0	4
	* SITE TOTAL *	1	6	9	6	0	22
SITE 901	ANDREW	0	1	3	5	0	9
	BUCHANAN	6	13	14	3	0	36
	* SITE TOTAL *	6	14	17	8	0	45
SITE 902	CLAY	2	13	17	12	1	45
	LAFAYETTE	2	2	4	5	0	13
	PLATTE	1	0	1	1	0	3
	RAY	1	2	1	0	0	4
	* SITE TOTAL *	6	17	23	18	1	65
SITE 904	CASS	3	5	9	16	0	33
	JOHNSON	7	19	26	17	0	69
	* SITE TOTAL *	10	24	35	33	0	102

**Appendix I. (continued) Intensive In-home Services  
Age of At-risk Children Accepted During Fiscal Year 2005**

SITE	COUNTY	<1	1-5	6-12	>=13	NOT REPORTED	TOTAL
SITE 905	COOPER	0	8	8	3	0	19
	PETTIS	3	8	11	6	1	29
	SALINE	1	12	17	5	0	35
	* SITE TOTAL *	4	28	36	14	1	83
SITE 907	AUDRAIN	1	2	7	6	0	16
	MONTGOMERY	0	0	4	4	0	8
	WARREN	0	2	7	4	0	13
	* SITE TOTAL *	1	4	18	14	0	37
SITE 908	FRANKLIN	13	41	23	13	0	90
	* SITE TOTAL *	13	41	23	13	0	90
SITE 909	COLE	0	1	12	3	1	17
	MILLER	0	3	6	7	0	16
	MONITEAU	0	2	4	4	0	10
	MORGAN	0	2	3	11	0	16
	* SITE TOTAL *	0	8	25	25	1	59
SITE 910	BATES	1	3	1	1	0	6
	BENTON	1	0	2	3	0	6
	HENRY	0	0	1	3	0	4
	ST CLAIR	0	0	1	4	0	5
	* SITE TOTAL *	2	3	5	11	0	21
SITE 911	BARTON	0	1	0	0	0	1
	CEDAR	0	1	0	0	0	1
	DADE	0	3	0	4	0	7
	VERNON	2	1	3	5	0	11
	* SITE TOTAL *	2	6	3	9	0	20
SITE 913	CRAWFORD	2	8	9	6	0	25
	DENT	0	2	10	1	0	13
	IRON	1	3	5	3	0	12
	REYNOLDS	0	5	5	2	0	12
SITE 913	SHANNON	0	1	1	0	0	2
	* SITE TOTAL *	3	19	30	12	0	64
SITE 915	BUTLER	7	13	6	1	0	27
	CARTER	0	3	1	0	0	4
	RIPLEY	0	0	2	1	0	3
	WAYNE	0	0	3	3	0	6
	* SITE TOTAL *	7	16	12	5	0	40
SITE 916	BOLLINGER	0	3	5	1	0	9
	CAPE GIRARDEAU	0	2	6	9	1	18
	PERRY	1	4	5	2	0	12
	* SITE TOTAL *	1	9	16	12	1	39
SITE 917	MADISON	2	2	1	4	0	9
	ST FRANCOIS	5	3	10	10	0	28
	STE GENEVIEVE	0	0	1	3	0	4
	WASHINGTON	2	3	7	6	0	18
	* SITE TOTAL *	9	8	19	23	0	59
SITE 918	STONE	0	1	3	5	0	9
	TANEY	2	9	13	3	0	27
	* SITE TOTAL *	2	10	16	8	0	36
SITE 919	ADAIR	6	8	6	7	0	27
	KNOX	0	1	1	2	0	4
	LEWIS	2	8	9	1	0	20
	* SITE TOTAL *	8	17	16	10	0	51
SITE 921	DUNKLIN	0	3	1	2	0	6
	NEW MADRID	0	2	0	0	0	2
	STODDARD	0	0	1	2	0	3
	* SITE TOTAL *	0	5	2	4	0	11
SITE 922	MACON	3	5	8	8	0	24
	SHELBY	0	0	2	1	0	3
	* SITE TOTAL *	3	5	10	9	0	27
SITE 923	CLINTON	0	0	2	0	0	2
	DE KALB	0	1	3	1	0	5
	LIVINGSTON	2	8	6	1	0	17
SITE 924	* SITE TOTAL *	2	9	11	2	0	24
	CLARK	1	3	4	6	0	14
	SCHUYLER	0	0	1	5	0	6
	SCOTLAND	0	1	1	3	0	5
SITE 925	* SITE TOTAL *	1	4	6	14	0	25
	HOWELL	1	1	3	5	0	10
	OREGON	1	3	1	1	0	6
	* SITE TOTAL *	2	4	4	6	0	16
<b>STATETOTAL</b>		<b>286</b>	<b>871</b>	<b>1,247</b>	<b>962</b>	<b>9</b>	<b>3,375</b>

**Appendix J. Intensive In-home Services**  
**Gender of At-risk Children Accepted During Fiscal Year 2005**

SITE	COUNTY	FEMALE		MALE		NOT REPORTED		TOTAL
		NUMBER	PERCENT	NUMBER	PERCENT	NUMBER	PERCENT	
SITE 701	JACKSON	244	48.3	260	51.5	1	0.2	505
	* SITE TOTAL *	244	48.3	260	51.5	1	0.2	505
SITE 702	ST LOUIS CITY	307	52.4	279	47.6	0	0	586
	ST LOUIS COUNTY	276	49.6	280	50.3	1	0.2	557
	* SITE TOTAL *	583	51	559	48.9	1	0.1	1,143
SITE 703	JEFFERSON	95	52.8	84	46.7	1	0.6	180
	* SITE TOTAL *	95	52.8	84	46.7	1	0.6	180
SITE 704	CHRISTIAN	15	53.6	13	46.4	0	0	28
	GREENE	65	49.2	67	50.8	0	0	132
	POLK	1	50	1	50	0	0	2
	WEBSTER	3	42.9	4	57.1	0	0	7
	* SITE TOTAL *	84	49.7	85	50.3	0	0	169
SITE 705	BARRY	12	54.5	10	45.5	0	0	22
	LAWRENCE	22	45.8	26	54.2	0	0	48
	MCDONALD	5	100	0	0	0	0	5
	NEWTON	7	33.3	14	66.7	0	0	21
	* SITE TOTAL *	46	47.9	50	52.1	0	0	96
SITE 708	BOONE	10	40	15	60	0	0	25
	CALLAWAY	15	38.5	24	61.5	0	0	39
	* SITE TOTAL *	25	39.1	39	60.9	0	0	64
SITE 710	JASPER	43	51.2	40	47.6	1	1.2	84
	* SITE TOTAL *	43	51.2	40	47.6	1	1.2	84
SITE 801	ATCHISON	2	50	2	50	0	0	4
	GENTRY	5	50	5	50	0	0	10
	HOLT	1	100	0	0	0	0	1
	NODAWAY	6	60	4	40	0	0	10
	WORTH	0	0	1	100	0	0	1
	* SITE TOTAL *	14	53.8	12	46.2	0	0	26
SITE 802	GRUNDY	3	30	7	70	0	0	10
	HARRISON	0	0	1	100	0	0	1
	MERCER	1	50	1	50	0	0	2
	PUTNAM	3	50	3	50	0	0	6
	* SITE TOTAL *	7	36.8	12	63.2	0	0	19
SITE 804	RANDOLPH	10	52.6	8	42.1	1	5.3	19
	* SITE TOTAL *	10	52.6	8	42.1	1	5.3	19
SITE 808	CAMDEN	5	31.3	11	68.8	0	0	16
	DALLAS	1	20	4	80	0	0	5
	HICKORY	1	25	3	75	0	0	4
	LACLEDE	6	46.2	7	53.8	0	0	13
	* SITE TOTAL *	13	34.2	25	65.8	0	0	38
SITE 810	MARIES	1	50	1	50	0	0	2
	OZARK	1	50	1	50	0	0	2
	PHELPS	4	40	6	60	0	0	10
	PULASKI	5	45.5	6	54.5	0	0	11
	TEXAS	7	46.7	8	53.3	0	0	15
	WRIGHT	3	37.5	5	62.5	0	0	8
	* SITE TOTAL *	21	43.8	27	56.3	0	0	48
SITE 811	ST CHARLES	4	30.8	9	69.2	0	0	13
	* SITE TOTAL *	4	30.8	9	69.2	0	0	13
SITE 813	CHARITON	3	60	2	40	0	0	5
	LINN	6	60	4	40	0	0	10
	SULLIVAN	1	20	4	80	0	0	5
	* SITE TOTAL *	10	50	10	50	0	0	20
SITE 815	MARION	6	66.7	3	33.3	0	0	9
	MONROE	2	50	2	50	0	0	4
	RALLS	1	50	1	50	0	0	2
	* SITE TOTAL *	9	60	6	40	0	0	15
SITE 816	LINCOLN	7	38.9	11	61.1	0	0	18
	PIKE	3	75	1	25	0	0	4
	* SITE TOTAL *	10	45.5	12	54.5	0	0	22
SITE 901	ANDREW	6	66.7	3	33.3	0	0	9
	BUCHANAN	19	52.8	17	47.2	0	0	36
	* SITE TOTAL *	25	55.6	20	44.4	0	0	45
SITE 902	CLAY	18	40	26	57.8	1	2.2	45
	LAFAYETTE	4	30.8	9	69.2	0	0	13
	PLATTE	2	66.7	1	33.3	0	0	3
	RAY	2	50	2	50	0	0	4
	* SITE TOTAL *	26	40	38	58.5	1	1.5	65
SITE 904	CASS	14	42.4	19	57.6	0	0	33
	JOHNSON	30	43.5	39	56.5	0	0	69
	* SITE TOTAL *	44	43.1	58	56.9	0	0	102

**Appendix J. Intensive In-home Services**  
**Gender of At-risk Children Accepted During Fiscal Year 2005**

SITE	COUNTY	FEMALE		MALE		NOT REPORTED		TOTAL
		NUMBER	PERCENT	NUMBER	PERCENT	NUMBER	PERCENT	
SITE 905	COOPER	7	36.8	12	63.2	0	0	19
	PETTIS	13	44.8	15	51.7	1	3.4	29
	SALINE	18	51.4	17	48.6	0	0	35
	* SITE TOTAL *	38	45.8	44	53	1	1.2	83
SITE 907	AUDRAIN	8	50	8	50	0	0	16
	MONTGOMERY	3	37.5	5	62.5	0	0	8
	WARREN	6	46.2	7	53.8	0	0	13
	* SITE TOTAL *	17	45.9	20	54.1	0	0	37
SITE 908	FRANKLIN	46	51.1	44	48.9	0	0	90
	* SITE TOTAL *	46	51.1	44	48.9	0	0	90
SITE 909	COLE	6	35.3	10	58.8	1	5.9	17
	MILLER	9	56.3	7	43.8	0	0	16
	MONITEAU	5	50	5	50	0	0	10
	MORGAN	12	75	4	25	0	0	16
	* SITE TOTAL *	32	54.2	26	44.1	1	1.7	59
SITE 910	BATES	3	50	3	50	0	0	6
	BENTON	3	50	3	50	0	0	6
	HENRY	2	50	2	50	0	0	4
	ST CLAIR	0	0	5	100	0	0	5
	* SITE TOTAL *	8	38.1	13	61.9	0	0	21
SITE 911	BARTON	0	0	1	100	0	0	1
	CEDAR	0	0	1	100	0	0	1
	DADE	2	28.6	5	71.4	0	0	7
	VERNON	5	45.5	6	54.5	0	0	11
	* SITE TOTAL *	7	35	13	65	0	0	20
SITE 913	CRAWFORD	12	48	13	52	0	0	25
	DENT	9	69.2	4	30.8	0	0	13
	IRON	5	41.7	7	58.3	0	0	12
	REYNOLDS	7	58.3	5	41.7	0	0	12
	SHANNON	0	0	2	100	0	0	2
	* SITE TOTAL *	33	51.6	31	48.4	0	0	64
SITE 915	BUTLER	13	48.1	14	51.9	0	0	27
	CARTER	3	75	1	25	0	0	4
	RIPLEY	2	66.7	1	33.3	0	0	3
	WAYNE	3	50	3	50	0	0	6
	* SITE TOTAL *	21	52.5	19	47.5	0	0	40
SITE 916	BOLLINGER	5	55.6	4	44.4	0	0	9
	CAPE GIRARDEAU	8	44.4	9	50	1	5.6	18
	PERRY	5	41.7	7	58.3	0	0	12
	* SITE TOTAL *	18	46.2	20	51.3	1	2.6	39
SITE 917	MADISON	5	55.6	4	44.4	0	0	9
	STFRANCOIS	11	39.3	17	60.7	0	0	28
	STEGENEVIEVE	1	25	3	75	0	0	4
	WASHINGTON	9	50	9	50	0	0	18
	* SITE TOTAL *	26	44.1	33	55.9	0	0	59
SITE 918	STONE	3	33.3	6	66.7	0	0	9
	TANEY	15	55.6	12	44.4	0	0	27
	* SITE TOTAL *	18	50	18	50	0	0	36
SITE 919	ADAIR	9	33.3	18	66.7	0	0	27
	KNOX	1	25	3	75	0	0	4
	LEWIS	11	55	9	45	0	0	20
	* SITE TOTAL *	21	41.2	30	58.8	0	0	51
SITE 921	DUNKLIN	5	83.3	1	16.7	0	0	6
	NEW MADRID	0	0	2	100	0	0	2
	STODDARD	3	100	0	0	0	0	3
	* SITE TOTAL *	8	72.7	3	27.3	0	0	11
SITE 922	MACON	12	50	12	50	0	0	24
	SHELBY	1	33.3	2	66.7	0	0	3
	* SITE TOTAL *	13	48.1	14	51.9	0	0	27
SITE 923	CLINTON	2	100	0	0	0	0	2
	DE KALB	3	60	2	40	0	0	5
	LIVINGSTON	5	29.4	12	70.6	0	0	17
	* SITE TOTAL *	10	41.7	14	58.3	0	0	24
SITE 924	CLARK	7	50	7	50	0	0	14
	SCHUYLER	2	33.3	4	66.7	0	0	6
	SCOTLAND	2	40	3	60	0	0	5
	* SITE TOTAL *	11	44	14	56	0	0	25
SITE 925	HOWELL	4	40	6	60	0	0	10
	OREGON	5	83.3	1	16.7	0	0	6
	* SITE TOTAL *	9	56.3	7	43.8	0	0	16
<b>STATE TOTAL</b>		<b>1,649</b>	<b>48.9</b>	<b>1,717</b>	<b>50.9</b>	<b>9</b>	<b>0.3</b>	<b>3,375</b>



**Appendix K. Intensive In-home Services**  
**Race of At-risk Children Accepted During Fiscal Year 2005**

SITE	COUNTY	AMER INDIAN		ASIAN		BLACK	
		NUMBER	PERCENT	NUMBER	PERCENT	NUMBER	PERCENT
SITE 701	JACKSON	2	0.4	0	0	272	53.9
	* SITE TOTAL *	2	0.4	0	0	272	53.9
SITE 702	ST LOUIS CITY	0	0	2	0.3	496	84.6
	ST LOUIS COUNTY	0	0	3	0.5	377	67.7
	* SITE TOTAL *	0	0	5	0.4	873	76.4
SITE 703	JEFFERSON	0	0	0	0	2	1.1
	* SITE TOTAL *	0	0	0	0	2	1.1
SITE 704	CHRISTIAN	0	0	0	0	0	0
	GREENE	0	0	0	0	13	9.8
	POLK	0	0	0	0	0	0
	WEBSTER	0	0	0	0	0	0
	* SITE TOTAL *	0	0	0	0	13	7.7
SITE 705	BARRY	0	0	0	0	0	0
	LAWRENCE	0	0	0	0	0	0
	MCDONALD	0	0	0	0	0	0
	NEWTON	0	0	0	0	2	9.5
	* SITE TOTAL *	0	0	0	0	2	2.1
SITE 708	BOONE	0	0	0	0	14	56
	CALLAWAY	0	0	0	0	6	15.4
	* SITE TOTAL *	0	0	0	0	20	31.3
SITE 710	JASPER	0	0	0	0	8	9.5
	* SITE TOTAL *	0	0	0	0	8	9.5
SITE 801	ATCHISON	0	0	0	0	0	0
	GENTRY	0	0	0	0	0	0
	HOLT	0	0	0	0	0	0
	NODAWAY	0	0	0	0	0	0
	WORTH	0	0	0	0	0	0
	* SITE TOTAL *	0	0	0	0	0	0
SITE 802	GRUNDY	0	0	0	0	0	0
	HARRISON	0	0	0	0	0	0
	MERCER	0	0	0	0	0	0
	PUTNAM	0	0	0	0	0	0
	* SITE TOTAL *	0	0	0	0	0	0
SITE 804	RANDOLPH	0	0	0	0	5	26.3
	* SITE TOTAL *	0	0	0	0	5	26.3
SITE 808	CAMDEN	0	0	1	6.3	0	0
	DALLAS	0	0	0	0	0	0
	HICKORY	0	0	0	0	0	0
	LACLEDE	0	0	0	0	0	0
	* SITE TOTAL *	0	0	1	2.6	0	0
SITE 810	MARIES	0	0	0	0	0	0
	OZARK	0	0	0	0	0	0
	PHELPS	0	0	0	0	0	0
	PULASKI	0	0	0	0	3	27.3
	TEXAS	0	0	0	0	0	0
	WRIGHT	0	0	0	0	1	12.5
	* SITE TOTAL *	0	0	0	0	4	8.3
SITE 811	ST CHARLES	0	0	0	0	0	0
	* SITE TOTAL *	0	0	0	0	0	0
SITE 813	CHARITON	0	0	0	0	0	0
	LINN	0	0	0	0	1	10
	SULLIVAN	0	0	0	0	0	0
	* SITE TOTAL *	0	0	0	0	1	5
SITE 815	MARION	0	0	0	0	0	0
	MONROE	0	0	0	0	0	0
	RALLS	0	0	0	0	0	0
	* SITE TOTAL *	0	0	0	0	0	0
SITE 816	LINCOLN	0	0	0	0	0	0
	PIKE	0	0	0	0	0	0
	* SITE TOTAL *	0	0	0	0	0	0
SITE 901	ANDREW	0	0	0	0	0	0
	BUCHANAN	0	0	0	0	6	16.7
	* SITE TOTAL *	0	0	0	0	6	13.3
SITE 902	CLAY	0	0	0	0	4	8.9
	LAFAYETTE	0	0	0	0	0	0
	PLATTE	0	0	0	0	2	66.7
	RAY	0	0	0	0	0	0
	* SITE TOTAL *	0	0	0	0	6	9.2
SITE 904	CASS	0	0	0	0	1	3
	JOHNSON	1	1.4	0	0	9	13
	* SITE TOTAL *	1	1	0	0	10	9.8

**Appendix K. (continued) Intensive In-home Services  
Race of At-risk Children Accepted During Fiscal Year 2005**

SITE	COUNTY	MULTIRACIAL		OTHER		WHITE		TOTAL
		NUMBER	PERCENT	NUMBER	PERCENT	NUMBER	PERCENT	
SITE 701	JACKSON	2	0.4	4	0.8	225	44.6	505
	* SITE TOTAL *	2	0.4	4	0.8	225	44.6	505
SITE 702	ST LOUIS CITY	1	0.2	10	1.7	77	13.1	586
	ST LOUIS COUNTY	0	0	9	1.6	168	30.2	557
	* SITE TOTAL *	1	0.1	19	1.7	245	21.4	1,143
SITE 703	JEFFERSON	0	0	2	1.1	176	97.8	180
	* SITE TOTAL *	0	0	2	1.1	176	97.8	180
SITE 704	CHRISTIAN	0	0	0	0	28	100	28
	GREENE	0	0	1	0.8	118	89.4	132
	POLK	0	0	0	0	2	100	2
	WEBSTER	0	0	0	0	7	100	7
	* SITE TOTAL *	0	0	1	0.6	155	91.7	169
SITE 705	BARRY	0	0	0	0	22	100	22
	LAWRENCE	0	0	0	0	48	100	48
	MCDONALD	0	0	0	0	5	100	5
	NEWTON	0	0	0	0	19	90.5	21
	* SITE TOTAL *	0	0	0	0	94	97.9	96
SITE 708	BOONE	0	0	0	0	11	44	25
	CALLAWAY	0	0	1	2.6	32	82.1	39
	* SITE TOTAL *	0	0	1	1.6	43	67.2	64
SITE 710	JASPER	2	2.4	1	1.2	73	86.9	84
	* SITE TOTAL *	2	2.4	1	1.2	73	86.9	84
SITE 801	ATCHISON	0	0	0	0	4	100	4
	GENTRY	0	0	0	0	10	100	10
	HOLT	0	0	0	0	1	100	1
	NODAWAY	0	0	0	0	10	100	10
	WORTH	0	0	0	0	1	100	1
	* SITE TOTAL *	0	0	0	0	26	100	26
SITE 802	GRUNDY	0	0	0	0	10	100	10
	HARRISON	0	0	0	0	1	100	1
	MERCER	0	0	0	0	2	100	2
	PUTNAM	0	0	1	16.7	5	83.3	6
	* SITE TOTAL *	0	0	1	5.3	18	94.7	19
SITE 804	RANDOLPH	0	0	1	5.3	13	68.4	19
	* SITE TOTAL *	0	0	1	5.3	13	68.4	19
SITE 808	CAMDEN	5	31.3	0	0	10	62.5	16
	DALLAS	0	0	0	0	5	100	5
	HICKORY	0	0	0	0	4	100	4
	LACLEDE	0	0	0	0	13	100	13
	* SITE TOTAL *	5	13.2	0	0	32	84.2	38
SITE 810	MARIES	0	0	0	0	2	100	2
	OZARK	0	0	0	0	2	100	2
	PHELPS	0	0	0	0	10	100	10
	PULASKI	0	0	0	0	8	72.7	11
	TEXAS	0	0	0	0	15	100	15
	WRIGHT	0	0	0	0	7	87.5	8
	* SITE TOTAL *	0	0	0	0	44	91.7	48
SITE 811	ST CHARLES	0	0	0	0	13	100	13
	* SITE TOTAL *	0	0	0	0	13	100	13
SITE 813	CHARITON	0	0	0	0	5	100	5
	LINN	0	0	0	0	9	90	10
	SULLIVAN	0	0	0	0	5	100	5
	* SITE TOTAL *	0	0	0	0	19	95	20
SITE 815	MARION	0	0	1	11.1	8	88.9	9
	MONROE	0	0	0	0	4	100	4
	RALLS	0	0	0	0	2	100	2
	* SITE TOTAL *	0	0	1	6.7	14	93.3	15
SITE 816	LINCOLN	0	0	0	0	18	100	18
	PIKE	0	0	0	0	4	100	4
	* SITE TOTAL *	0	0	0	0	22	100	22
SITE 901	ANDREW	0	0	0	0	9	100	9
	BUCHANAN	0	0	0	0	30	83.3	36
	* SITE TOTAL *	0	0	0	0	39	86.7	45
SITE 902	CLAY	0	0	2	4.4	39	86.7	45
	LAFAYETTE	0	0	1	7.7	12	92.3	13
	PLATTE	0	0	0	0	1	33.3	3
	RAY	0	0	0	0	4	100	4
	* SITE TOTAL *	0	0	3	4.6	56	86.2	65
SITE 904	CASS	0	0	0	0	32	97	33
	JOHNSON	1	1.4	0	0	58	84.1	69
	* SITE TOTAL *	1	1	0	0	90	88.2	102

**Appendix K. (continued) Intensive In-home Services  
Race of At-risk Children Accepted During Fiscal Year 2005**

SITE	COUNTY	AMER INDIAN		ASIAN		BLACK	
		NUMBER	PERCENT	NUMBER	PERCENT	NUMBER	PERCENT
SITE 905	COOPER	0	0	0	0	1	5.3
	PETTIS	0	0	0	0	0	0
	SALINE	0	0	0	0	4	11.4
	* SITE TOTAL *	0	0	0	0	5	6
SITE 907	AUDRAIN	0	0	0	0	0	0
	MONTGOMERY	0	0	0	0	0	0
	WARREN	0	0	0	0	1	7.7
	* SITE TOTAL *	0	0	0	0	1	2.7
SITE 908	FRANKLIN	1	1.1	0	0	2	2.2
	* SITE TOTAL *	1	1.1	0	0	2	2.2
SITE 909	COLE	0	0	0	0	0	0
	MILLER	0	0	0	0	1	6.3
	MONITEAU	0	0	0	0	0	0
	MORGAN	0	0	0	0	0	0
	* SITE TOTAL *	0	0	0	0	1	1.7
SITE 910	BATES	0	0	0	0	0	0
	BENTON	0	0	0	0	0	0
	HENRY	0	0	0	0	0	0
	ST CLAIR	0	0	0	0	0	0
	* SITE TOTAL *	0	0	0	0	0	0
SITE 911	BARTON	0	0	0	0	0	0
	CEDAR	0	0	0	0	0	0
	DADE	0	0	0	0	0	0
	VERNON	0	0	0	0	0	0
	* SITE TOTAL *	0	0	0	0	0	0
SITE 913	CRAWFORD	0	0	0	0	0	0
	DENT	0	0	0	0	0	0
	IRON	0	0	0	0	0	0
	REYNOLDS	0	0	0	0	0	0
	* SITE TOTAL *	0	0	0	0	0	0
SITE 915	BUTLER	0	0	0	0	0	0
	CARTER	0	0	0	0	0	0
	RIPLEY	0	0	0	0	0	0
	WAYNE	0	0	0	0	0	0
	* SITE TOTAL *	0	0	0	0	0	0
SITE 916	BOLLINGER	0	0	0	0	0	0
	CAPE GIRARDEAU	0	0	0	0	3	16.7
	PERRY	0	0	0	0	0	0
	* SITE TOTAL *	0	0	0	0	3	7.7
SITE 917	MADISON	0	0	0	0	0	0
	ST FRANCOIS	0	0	0	0	0	0
	STEGENEVIEVE	0	0	0	0	0	0
	WASHINGTON	0	0	0	0	0	0
	* SITE TOTAL *	0	0	0	0	0	0
SITE 918	STONE	0	0	0	0	0	0
	TANEY	0	0	0	0	0	0
	* SITE TOTAL *	0	0	0	0	0	0
SITE 919	ADAIR	0	0	0	0	2	7.4
	KNOX	0	0	0	0	0	0
	LEWIS	0	0	0	0	2	10
	* SITE TOTAL *	0	0	0	0	4	7.8
SITE 921	DUNKLIN	0	0	0	0	1	16.7
	NEW MADRID	0	0	0	0	0	0
	STODDARD	0	0	0	0	0	0
	* SITE TOTAL *	0	0	0	0	1	9.1
SITE 922	MACON	0	0	0	0	0	0
	SHELBY	0	0	0	0	0	0
	* SITE TOTAL *	0	0	0	0	0	0
SITE 923	CLINTON	0	0	0	0	0	0
	DE KALB	0	0	0	0	0	0
	LIVINGSTON	0	0	0	0	0	0
	* SITE TOTAL *	0	0	0	0	0	0
SITE 924	CLARK	0	0	0	0	0	0
	SCHUYLER	0	0	0	0	0	0
	SCOTLAND	0	0	0	0	0	0
	* SITE TOTAL *	0	0	0	0	0	0
SITE 925	HOWELL	0	0	0	0	0	0
	OREGON	0	0	0	0	0	0
	* SITE TOTAL *	0	0	0	0	0	0
<b>STATE TOTAL</b>	<b>4</b>	<b>0.1</b>	<b>6</b>	<b>0.2</b>	<b>1,239</b>	<b>36.7</b>	

**Appendix K. (continued) Intensive In-home Services  
Race of At-risk Children Accepted During Fiscal Year 2005**

SITE	COUNTY	MULTIRACIAL		OTHER		WHITE		TOTAL
		NUMBER	PERCENT	NUMBER	PERCENT	NUMBER	PERCENT	
SITE 905	COOPER	0	0	0	0	18	94.7	19
	PETTIS	0	0	1	3.4	28	96.6	29
	SALINE	0	0	0	0	31	88.6	35
	* SITE TOTAL *	0	0	1	1.2	77	92.8	83
SITE 907	AUDRAIN	0	0	0	0	16	100	16
	MONTGOMERY	0	0	0	0	8	100	8
	WARREN	0	0	0	0	12	92.3	13
	* SITE TOTAL *	0	0	0	0	36	97.3	37
SITE 908	FRANKLIN	0	0	0	0	87	96.7	90
	* SITE TOTAL *	0	0	0	0	87	96.7	90
SITE 909	COLE	0	0	1	5.9	16	94.1	17
	MILLER	0	0	0	0	15	93.8	16
	MONITEAU	0	0	0	0	10	100	10
	MORGAN	0	0	0	0	16	100	16
	* SITE TOTAL *	0	0	1	1.7	57	96.6	59
SITE 910	BATES	0	0	0	0	6	100	6
	BENTON	0	0	0	0	6	100	6
	HENRY	0	0	0	0	4	100	4
	ST CLAIR	0	0	0	0	5	100	5
	* SITE TOTAL *	0	0	0	0	21	100	21
SITE 911	BARTON	0	0	0	0	1	100	1
	CEDAR	0	0	0	0	1	100	1
	DADE	0	0	0	0	7	100	7
	VERNON	0	0	0	0	11	100	11
	* SITE TOTAL *	0	0	0	0	20	100	20
SITE 913	CRAWFORD	0	0	0	0	25	100	25
	DENT	0	0	0	0	13	100	13
	IRON	0	0	0	0	12	100	12
	REYNOLDS	0	0	0	0	12	100	12
	SHANNON	0	0	0	0	2	100	2
	* SITE TOTAL *	0	0	0	0	64	100	64
SITE 915	BUTLER	0	0	0	0	27	100	27
	CARTER	0	0	0	0	4	100	4
	RIPLEY	0	0	0	0	3	100	3
	WAYNE	0	0	1	16.7	5	83.3	6
	* SITE TOTAL *	0	0	1	2.5	39	97.5	40
SITE 916	BOLLINGER	0	0	0	0	9	100	9
	CAPE GIRARDEAU	0	0	1	5.6	14	77.8	18
	PERRY	0	0	0	0	12	100	12
	* SITE TOTAL *	0	0	1	2.6	35	89.7	39
SITE 917	MADISON	0	0	0	0	9	100	9
	ST FRANCOIS	0	0	0	0	28	100	28
	STE GENEVIEVE	0	0	0	0	4	100	4
	WASHINGTON	0	0	0	0	18	100	18
	* SITE TOTAL *	0	0	0	0	59	100	59
SITE 918	STONE	0	0	0	0	9	100	9
	TANEY	1	3.7	0	0	26	96.3	27
	* SITE TOTAL *	1	2.8	0	0	35	97.2	36
SITE 919	ADAIR	0	0	0	0	25	92.6	27
	KNOX	0	0	0	0	4	100	4
	LEWIS	0	0	0	0	18	90	20
	* SITE TOTAL *	0	0	0	0	47	92.2	51
SITE 921	DUNKLIN	0	0	0	0	5	83.3	6
	NEW MADRID	0	0	0	0	2	100	2
	STODDARD	0	0	0	0	3	100	3
	* SITE TOTAL *	0	0	0	0	10	90.9	11
SITE 922	MACON	1	4.2	0	0	23	95.8	24
	SHELBY	0	0	0	0	3	100	3
	* SITE TOTAL *	1	3.7	0	0	26	96.3	27
SITE 923	CLINTON	0	0	0	0	2	100	2
	DE KALB	1	20	0	0	4	80	5
	LIVINGSTON	0	0	0	0	17	100	17
	* SITE TOTAL *	1	4.2	0	0	23	95.8	24
SITE 924	CLARK	0	0	0	0	14	100	14
	SCHUYLER	0	0	0	0	6	100	6
	SCOTLAND	0	0	0	0	5	100	5
	* SITE TOTAL *	0	0	0	0	25	100	25
SITE 925	HOWELL	0	0	0	0	10	100	10
	OREGON	0	0	0	0	6	100	6
	* SITE TOTAL *	0	0	0	0	16	100	16
<b>STATE TOTAL</b>		<b>14</b>	<b>0.4</b>	<b>38</b>	<b>1.1</b>	<b>2,074</b>	<b>61.5</b>	<b>3,375</b>

**Appendix L. Intensive In-home Services**  
**At-risk Children Accepted During Fiscal Year 2005 by Special Education Category**

SITE	COUNTY	BEHAVIOR DISABILITY	EMOTIONAL DISABILITY	LEARNING DISABILITY	NONE	OTHER	TOTAL
SITE 701	JACKSON	31	1	40	305	128	505
	* SITE TOTAL *	31	1	40	305	128	505
SITE 702	ST LOUIS CITY	27	4	91	377	87	586
	ST LOUIS COUNTY	28	16	75	366	72	557
	* SITE TOTAL *	55	20	166	743	159	1,143
SITE 703	JEFFERSON	7	0	6	121	46	180
	* SITE TOTAL *	7	0	6	121	46	180
SITE 704	CHRISTIAN	0	0	4	13	11	28
	GREENE	9	3	8	54	58	132
	POLK	0	0	0	2	0	2
	WEBSTER	0	0	0	4	3	7
	* SITE TOTAL *	9	3	12	73	72	169
SITE 705	BARRY	2	1	3	14	2	22
	LAWRENCE	1	1	7	34	5	48
	MCDONALD	0	0	0	5	0	5
	NEWTON	1	0	6	11	3	21
	* SITE TOTAL *	4	2	16	64	10	96
SITE 708	BOONE	2	0	4	13	6	25
	CALLAWAY	5	2	2	12	18	39
	* SITE TOTAL *	7	2	6	25	24	64
SITE 710	JASPER	3	0	9	43	29	84
	* SITE TOTAL *	3	0	9	43	29	84
SITE 801	ATCHISON	0	0	0	1	3	4
	GENTRY	0	0	3	7	0	10
	HOLT	0	0	1	0	0	1
	NODAWAY	0	0	3	5	2	10
	WORTH	0	0	1	0	0	1
	* SITE TOTAL *	0	0	8	13	5	26
SITE 802	GRUNDY	0	0	1	9	0	10
	HARRISON	0	0	0	1	0	1
	MERCER	0	0	0	2	0	2
	PUTNAM	2	0	0	4	0	6
	* SITE TOTAL *	2	0	1	16	0	19
SITE 804	RANDOLPH	0	0	4	8	7	19
	* SITE TOTAL *	0	0	4	8	7	19
SITE 808	CAMDEN	2	0	2	12	0	16
	DALLAS	0	0	4	1	0	5
	HICKORY	2	0	0	2	0	4
	LACLEDE	1	0	0	12	0	13
	* SITE TOTAL *	5	0	6	27	0	38
SITE 810	MARIES	1	0	1	0	0	2
	OZARK	0	0	0	2	0	2
	PHELPS	1	0	0	3	6	10
	PULASKI	1	0	0	8	2	11
	TEXAS	0	0	0	14	1	15
	WRIGHT	0	0	0	8	0	8
	* SITE TOTAL *	3	0	1	35	9	48
SITE 811	ST CHARLES	2	0	1	3	7	13
	* SITE TOTAL *	2	0	1	3	7	13
SITE 813	CHARITON	0	0	0	0	5	5
	LINN	3	0	0	0	7	10
	SULLIVAN	1	0	1	0	3	5
	* SITE TOTAL *	4	0	1	0	15	20
SITE 815	MARION	1	0	1	4	3	9
	MONROE	0	0	0	3	1	4
	RALLS	0	0	0	0	2	2
	* SITE TOTAL *	1	0	1	7	6	15
SITE 816	LINCOLN	1	1	3	9	4	18
	PIKE	0	0	0	2	2	4
	* SITE TOTAL *	1	1	3	11	6	22
SITE 901	ANDREW	0	0	1	8	0	9
	BUCHANAN	2	7	1	12	14	36
	* SITE TOTAL *	2	7	2	20	14	45
SITE 902	CLAY	1	0	4	36	4	45
	LAFAYETTE	0	0	0	10	3	13
	PLATTE	0	0	0	2	1	3
	RAY	0	0	0	0	4	4
	* SITE TOTAL *	1	0	4	48	12	65
SITE 904	CASS	2	0	2	24	5	33
	JOHNSON	10	2	4	24	29	69
	* SITE TOTAL *	12	2	6	48	34	102

**Appendix L. (continued) Intensive In-home Services  
At-risk Children Accepted During Fiscal Year 2005 by Special Education Category**

SITE	COUNTY	BEHAVIOR DISABILITY	EMOTIONAL DISABILITY	LEARNING DISABILITY	NONE	OTHER	TOTAL
SITE 905	COOPER	3	0	0	15	1	19
	PETTIS	2	0	4	12	11	29
	SALINE	6	0	2	21	6	35
	* SITE TOTAL *	11	0	6	48	18	83
SITE 907	AUDRAIN	1	0	3	5	7	16
	MONTGOMERY	1	0	1	4	2	8
	WARREN	0	1	1	9	2	13
	* SITE TOTAL *	2	1	5	18	11	37
SITE 908	FRANKLIN	1	0	8	51	30	90
	* SITE TOTAL *	1	0	8	51	30	90
SITE 909	COLE	3	0	3	11	0	17
	MILLER	2	0	4	10	0	16
	MONITEAU	0	1	0	9	0	10
	MORGAN	0	0	1	15	0	16
	* SITE TOTAL *	5	1	8	45	0	59
SITE 910	BATES	2	0	0	0	4	6
	BENTON	0	0	3	2	1	6
	HENRY	1	0	0	1	2	4
	ST CLAIR	1	0	0	2	2	5
	* SITE TOTAL *	4	0	3	5	9	21
SITE 911	BARTON	0	0	0	1	0	1
	CEDAR	0	0	0	1	0	1
	DADE	1	0	2	3	1	7
	VERNON	0	0	2	8	1	11
	* SITE TOTAL *	1	0	4	13	2	20
SITE 913	CRAWFORD	3	0	3	14	5	25
	DENT	2	0	1	10	0	13
	IRON	1	0	0	9	2	12
	REYNOLDS	1	2	0	9	0	12
	SHANNON	0	0	0	2	0	2
	* SITE TOTAL *	7	2	4	44	7	64
SITE 915	BUTLER	1	0	1	24	1	27
	CARTER	1	0	0	3	0	4
	RIPLEY	0	0	0	3	0	3
	WAYNE	0	0	2	4	0	6
	* SITE TOTAL *	2	0	3	34	1	40
SITE 916	BOLLINGER	1	0	2	6	0	9
	CAPE GIRARDEAU	1	0	1	13	3	18
	PERRY	2	0	0	9	1	12
	* SITE TOTAL *	4	0	3	28	4	39
SITE 917	MADISON	0	0	0	7	2	9
	ST FRANCOIS	1	0	3	22	2	28
	STE GENEVIEVE	0	0	1	3	0	4
	WASHINGTON	1	1	0	15	1	18
	* SITE TOTAL *	2	1	4	47	5	59
SITE 918	STONE	0	0	2	7	0	9
	TANEY	1	0	3	20	3	27
	* SITE TOTAL *	1	0	5	27	3	36
SITE 919	ADAIR	3	0	4	16	4	27
	KNOX	0	0	0	3	1	4
	LEWIS	0	0	3	17	0	20
	* SITE TOTAL *	3	0	7	36	5	51
SITE 921	DUNKLIN	0	0	0	6	0	6
	NEW MADRID	0	0	0	0	2	2
	STODDARD	0	0	1	2	0	3
	* SITE TOTAL *	0	0	1	8	2	11
SITE 922	MACON	2	2	4	8	8	24
	SHELBY	0	0	1	1	1	3
	* SITE TOTAL *	2	2	5	9	9	27
SITE 923	CLINTON	0	0	0	2	0	2
	DE KALB	3	0	0	2	0	5
	LIVINGSTON	2	0	0	12	3	17
	* SITE TOTAL *	5	0	0	16	3	24
SITE 924	CLARK	0	1	7	2	4	14
	SCHUYLER	0	0	2	3	1	6
	SCOTLAND	0	0	1	3	1	5
	* SITE TOTAL *	0	1	10	8	6	25
SITE 925	HOWELL	0	0	0	8	2	10
	OREGON	0	0	2	2	2	6
	* SITE TOTAL *	0	0	2	10	4	16
<b>STATE TOTAL</b>	<b>199</b>	<b>46</b>	<b>371</b>	<b>2,057</b>	<b>702</b>	<b>3,375</b>	

**Appendix M. Intensive In-home Services**  
**At-risk Children Accepted During Fiscal Year 2005 by Planned Placement Prevented**

SITE	COUNTY	EMERGENCY		FOSTER HOME	PSYCHIATRIC HOSPITAL	RELATIVE CARE	RESIDENTIAL TREATMENT	TOTAL
		DETENTION	SHELTER					
SITE 701	JACKSON	3	2	345	1	133	21	505
	* SITE TOTAL *	3	2	345	1	133	21	505
SITE 702	ST LOUIS CITY	6	11	289	6	127	147	586
	ST LOUIS COUNTY	21	20	256	18	128	114	557
	* SITE TOTAL *	27	31	545	24	255	261	1,143
SITE 703	JEFFERSON	1	0	168	0	8	3	180
	* SITE TOTAL *	1	0	168	0	8	3	180
SITE 704	CHRISTIAN	3	3	16	0	6	0	28
	GREENE	5	3	81	6	30	7	132
	POLK	1	0	0	0	0	1	2
	WEBSTER	0	0	7	0	0	0	7
	* SITE TOTAL *	9	6	104	6	36	8	169
SITE 705	BARRY	0	0	22	0	0	0	22
	LAWRENCE	1	1	39	0	4	3	48
	MCDONALD	0	0	5	0	0	0	5
	NEWTON	2	1	17	0	0	1	21
	* SITE TOTAL *	3	2	83	0	4	4	96
SITE 708	BOONE	0	0	14	0	11	0	25
	CALLAWAY	0	0	22	3	13	1	39
	* SITE TOTAL *	0	0	36	3	24	1	64
SITE 710	JASPER	0	1	77	0	5	1	84
	* SITE TOTAL *	0	1	77	0	5	1	84
SITE 801	ATCHISON	0	0	2	0	2	0	4
	GENTRY	0	0	3	0	7	0	10
	HOLT	0	0	1	0	0	0	1
	NODAWAY	1	0	3	0	6	0	10
	WORTH	0	0	0	0	1	0	1
	* SITE TOTAL *	1	0	9	0	16	0	26
SITE 802	GRUNDY	0	1	9	0	0	0	10
	HARRISON	0	0	1	0	0	0	1
	MERCER	0	0	2	0	0	0	2
	PUTNAM	0	1	5	0	0	0	6
	* SITE TOTAL *	0	2	17	0	0	0	19
SITE 804	RANDOLPH	0	0	17	0	2	0	19
	* SITE TOTAL *	0	0	17	0	2	0	19
SITE 808	CAMDEN	0	0	13	0	1	2	16
	DALLAS	0	0	5	0	0	0	5
	HICKORY	0	0	2	1	0	1	4
	LACLEDE	0	0	13	0	0	0	13
	* SITE TOTAL *	0	0	33	1	1	3	38
SITE 810	MARIES	0	0	2	0	0	0	2
	OZARK	0	0	2	0	0	0	2
	PHELPS	1	0	7	1	1	0	10
	PULASKI	0	0	0	0	11	0	11
	TEXAS	0	0	4	0	11	0	15
	WRIGHT	0	0	8	0	0	0	8
	* SITE TOTAL *	1	0	23	1	23	0	48
SITE 811	ST CHARLES	0	0	8	1	3	1	13
	* SITE TOTAL *	0	0	8	1	3	1	13
SITE 813	CHARITON	0	0	5	0	0	0	5
	LINN	0	0	8	0	0	2	10
	SULLIVAN	0	0	5	0	0	0	5
	* SITE TOTAL *	0	0	18	0	0	2	20
SITE 815	MARION	0	0	8	0	1	0	9
	MONROE	0	0	3	0	1	0	4
	RALLS	0	0	0	0	2	0	2
	* SITE TOTAL *	0	0	11	0	4	0	15
SITE 816	LINCOLN	0	0	14	0	1	3	18
	PIKE	0	0	3	0	1	0	4
	* SITE TOTAL *	0	0	17	0	2	3	22
SITE 901	ANDREW	1	0	1	0	7	0	9
	BUCHANAN	3	1	16	0	16	0	36
	* SITE TOTAL *	4	1	17	0	23	0	45
SITE 902	CLAY	1	3	33	0	7	1	45
	LAFAYETTE	1	0	6	0	6	0	13
	PLATTE	0	0	3	0	0	0	3
	RAY	0	0	4	0	0	0	4
	* SITE TOTAL *	2	3	46	0	13	1	65
SITE 904	CASS	2	0	25	0	3	3	33
	JOHNSON	1	0	45	2	15	6	69
	* SITE TOTAL *	3	0	70	2	18	9	102

**Appendix M. (continued) Intensive In-home Services  
At-risk Children Accepted During Fiscal Year 2005 by Planned Placement Prevented**

SITE	COUNTY	EMERGENCY		FOSTER HOME	PSYCHIATRIC HOSPITAL	RELATIVE CARE	RESIDENTIAL TREATMENT	TOTAL
		DETENTION	SHELTER					
SITE 905	COOPER	0	0	11	0	8	0	19
	PETTIS	0	0	22	0	5	2	29
	SALINE	0	0	30	0	1	4	35
	* SITE TOTAL *	0	0	63	0	14	6	83
SITE 907	AUDRAIN	0	0	8	1	4	3	16
	MONTGOMERY	0	0	7	1	0	0	8
	WARREN	0	0	8	1	0	4	13
	* SITE TOTAL *	0	0	23	3	4	7	37
SITE 908	FRANKLIN	0	0	66	5	18	1	90
	* SITE TOTAL *	0	0	66	5	18	1	90
SITE 909	COLE	1	2	8	0	6	0	17
	MILLER	0	3	10	1	2	0	16
	MONITEAU	0	0	8	0	2	0	10
	MORGAN	1	0	13	0	2	0	16
	* SITE TOTAL *	2	5	39	1	12	0	59
SITE 910	BATES	0	0	4	0	2	0	6
	BENTON	0	0	3	3	0	0	6
	HENRY	2	0	2	0	0	0	4
	ST CLAIR	1	0	3	1	0	0	5
	* SITE TOTAL *	3	0	12	4	2	0	21
SITE 911	BARTON	0	0	1	0	0	0	1
	CEDAR	0	0	1	0	0	0	1
	DADE	1	0	6	0	0	0	7
	VERNON	0	0	11	0	0	0	11
	* SITE TOTAL *	1	0	19	0	0	0	20
SITE 913	CRAWFORD	0	0	18	0	6	1	25
	DENT	0	0	6	1	5	1	13
	IRON	0	0	8	0	4	0	12
	REYNOLDS	0	0	12	0	0	0	12
	SHANNON	0	0	0	0	2	0	2
	* SITE TOTAL *	0	0	44	1	17	2	64
SITE 915	BUTLER	0	0	12	0	13	2	27
	CARTER	0	0	3	0	0	1	4
	RIPLEY	0	0	3	0	0	0	3
	WAYNE	0	0	5	1	0	0	6
	* SITE TOTAL *	0	0	23	1	13	3	40
SITE 916	BOLLINGER	0	0	7	2	0	0	9
	CAPE GIRARDEAU	0	0	12	5	0	1	18
	PERRY	0	0	11	0	0	1	12
	* SITE TOTAL *	0	0	30	7	0	2	39
SITE 917	MADISON	0	0	7	0	1	1	9
	ST FRANCOIS	5	1	16	0	3	3	28
	STE GENEVIEVE	0	0	2	0	1	1	4
	WASHINGTON	0	0	14	1	0	3	18
	* SITE TOTAL *	5	1	39	1	5	8	59
SITE 918	STONE	0	0	7	0	0	2	9
	TANEY	0	0	26	1	0	0	27
	* SITE TOTAL *	0	0	33	1	0	2	36
SITE 919	ADAIR	1	0	23	0	3	0	27
	KNOX	0	0	4	0	0	0	4
	LEWIS	0	0	20	0	0	0	20
	* SITE TOTAL *	1	0	47	0	3	0	51
SITE 921	DUNKLIN	0	0	6	0	0	0	6
	NEW MADRID	0	0	2	0	0	0	2
	STODDARD	0	0	3	0	0	0	3
	* SITE TOTAL *	0	0	11	0	0	0	11
SITE 922	MACON	0	0	21	1	0	2	24
	SHELBY	0	0	3	0	0	0	3
	* SITE TOTAL *	0	0	24	1	0	2	27
SITE 923	CLINTON	0	0	2	0	0	0	2
	DE KALB	0	0	1	0	4	0	5
	LIVINGSTON	0	0	11	0	6	0	17
	* SITE TOTAL *	0	0	14	0	10	0	24
SITE 924	CLARK	0	0	14	0	0	0	14
	SCHUYLER	0	0	6	0	0	0	6
	SCOTLAND	0	0	4	0	0	1	5
	* SITE TOTAL *	0	0	24	0	0	1	25
SITE 925	HOWELL	0	2	8	0	0	0	10
	OREGON	0	0	6	0	0	0	6
	* SITE TOTAL *	0	2	14	0	0	0	16
<b>STATETOTAL</b>		<b>66</b>	<b>56</b>	<b>2,169</b>	<b>64</b>	<b>668</b>	<b>352</b>	<b>3,375</b>



**Appendix N. Intensive In-home Services**

**Exit Status of Families Exiting Intensive In-home Services During Fiscal Year 2005**

SITE	COUNTY	FAMILY INTACT		FAMILY NOT INTACT		OTHER		FAMILIES EXITING
		NUMBER	PERCENT	NUMBER	PERCENT	NUMBER	PERCENT	
SITE 701	JACKSON	186	83.4	36	16.1	1	0.4	223
	* SITE TOTAL *	186	83.4	36	16.1	1	0.4	223
SITE 702	ST LOUIS CITY	266	89.3	30	10.1	2	0.7	298
	ST LOUIS COUNTY	280	88.1	35	11	3	0.9	318
	* SITE TOTAL *	546	88.6	65	10.6	5	0.8	616
SITE 703	JEFFERSON	82	97.6	2	2.4	0	0	84
	* SITE TOTAL *	82	97.6	2	2.4	0	0	84
SITE 704	CHRISTIAN	10	76.9	2	15.4	1	7.7	13
	GREENE	54	77.1	13	18.6	3	4.3	70
	POLK	1	100	0	0	0	0	1
	WEBSTER	2	100	0	0	0	0	2
	* SITE TOTAL *	67	77.9	15	17.4	4	4.7	86
SITE 705	BARRY	13	81.3	3	18.8	0	0	16
	LAWRENCE	21	80.8	5	19.2	0	0	26
	MCDONALD	4	100	0	0	0	0	4
	NEWTON	12	100	0	0	0	0	12
	* SITE TOTAL *	50	86.2	8	13.8	0	0	58
SITE 708	BOONE	10	83.3	2	16.7	0	0	12
	CALLAWAY	14	82.4	3	17.6	0	0	17
	* SITE TOTAL *	24	82.8	5	17.2	0	0	29
SITE 710	JASPER	27	81.8	6	18.2	0	0	33
	* SITE TOTAL *	27	81.8	6	18.2	0	0	33
SITE 801	ATCHISON	2	100	0	0	0	0	2
	GENTRY	4	100	0	0	0	0	4
	HOLT	1	100	0	0	0	0	1
	NODAWAY	4	100	0	0	0	0	4
	WORTH	1	100	0	0	0	0	1
	* SITE TOTAL *	12	100	0	0	0	0	12
SITE 802	GRUNDY	5	100	0	0	0	0	5
	HARRISON	1	100	0	0	0	0	1
	PUTNAM	3	75	1	25	0	0	4
	* SITE TOTAL *	9	90	1	10	0	0	10
SITE 804	RANDOLPH	5	83.3	1	16.7	0	0	6
	* SITE TOTAL *	5	83.3	1	16.7	0	0	6
SITE 808	CAMDEN	6	85.7	1	14.3	0	0	7
	DALLAS	1	100	0	0	0	0	1
	HICKORY	2	66.7	1	33.3	0	0	3
	LACLEDE	5	100	0	0	0	0	5
	* SITE TOTAL *	14	87.5	2	12.5	0	0	16
SITE 810	MARIES	1	100	0	0	0	0	1
	OZARK	1	100	0	0	0	0	1
	HELPS	7	87.5	1	12.5	0	0	8
	PULASKI	6	85.7	1	14.3	0	0	7
	TEXAS	6	85.7	1	14.3	0	0	7
	WRIGHT	4	66.7	2	33.3	0	0	6
	* SITE TOTAL *	25	83.3	5	16.7	0	0	30
SITE 811	ST CHARLES	7	77.8	2	22.2	0	0	9
	* SITE TOTAL *	7	77.8	2	22.2	0	0	9
SITE 813	CHARITON	2	100	0	0	0	0	2
	LINN	5	100	0	0	0	0	5
	SULLIVAN	3	100	0	0	0	0	3
	* SITE TOTAL *	10	100	0	0	0	0	10
SITE 815	MARION	7	100	0	0	0	0	7
	MONROE	2	100	0	0	0	0	2
	* SITE TOTAL *	9	100	0	0	0	0	9
SITE 816	LINCOLN	5	71.4	2	28.6	0	0	7
	PIKE	0	0	2	100	0	0	2
	* SITE TOTAL *	5	55.6	4	44.4	0	0	9
SITE 901	ANDREW	4	80	1	20	0	0	5
	BUCHANAN	13	81.3	3	18.8	0	0	16
	* SITE TOTAL *	17	81	4	19	0	0	21
SITE 902	CLAY	8	100	0	0	0	0	8
	LAFAYETTE	6	100	0	0	0	0	6
	* SITE TOTAL *	14	100	0	0	0	0	14
SITE 904	CASS	21	95.5	1	4.5	0	0	22
	JOHNSON	28	90.3	3	9.7	0	0	31
	* SITE TOTAL *	49	92.5	4	7.5	0	0	53

**Appendix N. (continued) Intensive In-home Services**  
**Exit Status of Families Exiting Intensive In-home Services During Fiscal Year 2005**

SITE	COUNTY	FAMILY INTACT		FAMILY NOT INTACT		OTHER		FAMILIES EXITING
		NUMBER	PERCENT	NUMBER	PERCENT	NUMBER	PERCENT	
SITE 905	COOPER	9	81.8	2	18.2	0	0	11
	PETTIS	15	93.8	1	6.3	0	0	16
	SALINE	16	94.1	1	5.9	0	0	17
	* SITE TOTAL *	40	90.9	4	9.1	0	0	44
SITE 907	AUDRAIN	10	76.9	3	23.1	0	0	13
	MONTGOMERY	5	83.3	1	16.7	0	0	6
	WARREN	6	75	2	25	0	0	8
	* SITE TOTAL *	21	77.8	6	22.2	0	0	27
SITE 908	FRANKLIN	26	81.3	6	18.8	0	0	32
	* SITE TOTAL *	26	81.3	6	18.8	0	0	32
SITE 909	COLE	9	75	3	25	0	0	12
	MILLER	12	100	0	0	0	0	12
	MONITEAU	9	100	0	0	0	0	9
	MORGAN	6	75	1	12.5	1	12.5	8
	* SITE TOTAL *	36	87.8	4	9.8	1	2.4	41
SITE 910	BATES	5	100	0	0	0	0	5
	BENTON	3	75	1	25	0	0	4
	HENRY	6	100	0	0	0	0	6
	ST CLAIR	3	100	0	0	0	0	3
	* SITE TOTAL *	17	94.4	1	5.6	0	0	18
SITE 911	BARTON	1	100	0	0	0	0	1
	DADE	2	66.7	1	33.3	0	0	3
	VERNON	6	100	0	0	0	0	6
	* SITE TOTAL *	9	90	1	10	0	0	10
SITE 913	CRAWFORD	11	73.3	4	26.7	0	0	15
	DENT	7	100	0	0	0	0	7
	IRON	6	100	0	0	0	0	6
	REYNOLDS	2	100	0	0	0	0	2
	* SITE TOTAL *	26	86.7	4	13.3	0	0	30
SITE 915	BUTLER	9	90	0	0	1	10	10
	CARTER	1	50	1	50	0	0	2
	RIPLEY	1	100	0	0	0	0	1
	WAYNE	2	100	0	0	0	0	2
	* SITE TOTAL *	13	86.7	1	6.7	1	6.7	15
SITE 916	BOLLINGER	4	80	1	20	0	0	5
	CAPE GIRARDEAU	16	94.1	1	5.9	0	0	17
	PERRY	7	70	2	20	1	10	10
	* SITE TOTAL *	27	84.4	4	12.5	1	3.1	32
SITE 917	MADISON	7	87.5	1	12.5	0	0	8
	STFRANCOIS	10	76.9	3	23.1	0	0	13
	STEGENEVIEVE	2	50	2	50	0	0	4
	WASHINGTON	5	62.5	3	37.5	0	0	8
	* SITE TOTAL *	24	72.7	9	27.3	0	0	33
SITE 918	STONE	2	33.3	3	50	1	16.7	6
	TANEY	8	80	1	10	1	10	10
	* SITE TOTAL *	10	62.5	4	25	2	12.5	16
SITE 919	ADAIR	15	78.9	4	21.1	0	0	19
	KNOX	3	100	0	0	0	0	3
	LEWIS	6	66.7	3	33.3	0	0	9
	* SITE TOTAL *	24	77.4	7	22.6	0	0	31
SITE 921	DUNKLIN	2	100	0	0	0	0	2
	* SITE TOTAL *	2	100	0	0	0	0	2
SITE 922	MACON	9	75	3	25	0	0	12
	SHELBY	2	50	2	50	0	0	4
	* SITE TOTAL *	11	68.8	5	31.3	0	0	16
SITE 923	CLINTON	2	100	0	0	0	0	2
	DE KALB	2	100	0	0	0	0	2
	LIVINGSTON	8	100	0	0	0	0	8
	* SITE TOTAL *	12	100	0	0	0	0	12
SITE 924	CLARK	7	87.5	1	12.5	0	0	8
	SCHUYLER	4	100	0	0	0	0	4
	SCOTLAND	2	100	0	0	0	0	2
	* SITE TOTAL *	13	92.9	1	7.1	0	0	14
SITE 925	HOWELL	4	66.7	1	16.7	1	16.7	6
	OREGON	5	100	0	0	0	0	5
	* SITE TOTAL *	9	81.8	1	9.1	1	9.1	11
<b>STATE TOTAL</b>		<b>1,478</b>	<b>86.3</b>	<b>218</b>	<b>12.7</b>	<b>16</b>	<b>0.9</b>	<b>1,712</b>

---

---

## Notes

### Appendix C

- DMH CPS Inpatient  
DMH (Department of Mental Health)  
CPS (Comprehensive Psychiatric Services)  
Inpatient
- DMH CPS Outpatient  
DMH (Department of Mental Health)  
CPS (Comprehensive Psychiatric Services)  
Outpatient
- DSS DYS  
DSS (Department of Social Services)  
DYS (Division of Youth Services)
- DSS CD  
DSS (Department of Social Services)  
CD (Children's Division)

### Appendix C, Appendix F, Appendix K and Appendix L

- Other  
Unable to Determine  
Not Reported

### Appendix N

- This table includes only those families with an exit date during the fiscal year and an exit status which is reported.

Exit Status includes the following status codes:

Family Intact

Family Intact

Family Not Intact

Child Ran Away  
Child Moved Out of Home (not placed)  
Child Living with Relative or Guardian -  
(not Court Ordered)  
Child Living with Relative or Guardian -  
(Court Ordered)  
In Foster Home or Group Home  
In Residential Treatment  
With DYS  
In Juvenile Justice  
In In-Patient Psychiatric Diversion

Other

Can't Locate Family  
Information Not Available