

# What's Happening in PD in Missouri?

1

**PROFESSIONAL DEVELOPMENT WORKGROUP  
COORDINATING BOARD FOR EARLY CHILDHOOD**

**MARCH 1, 2011**

# Professional Development System

2



# Who will benefit from a PD system?

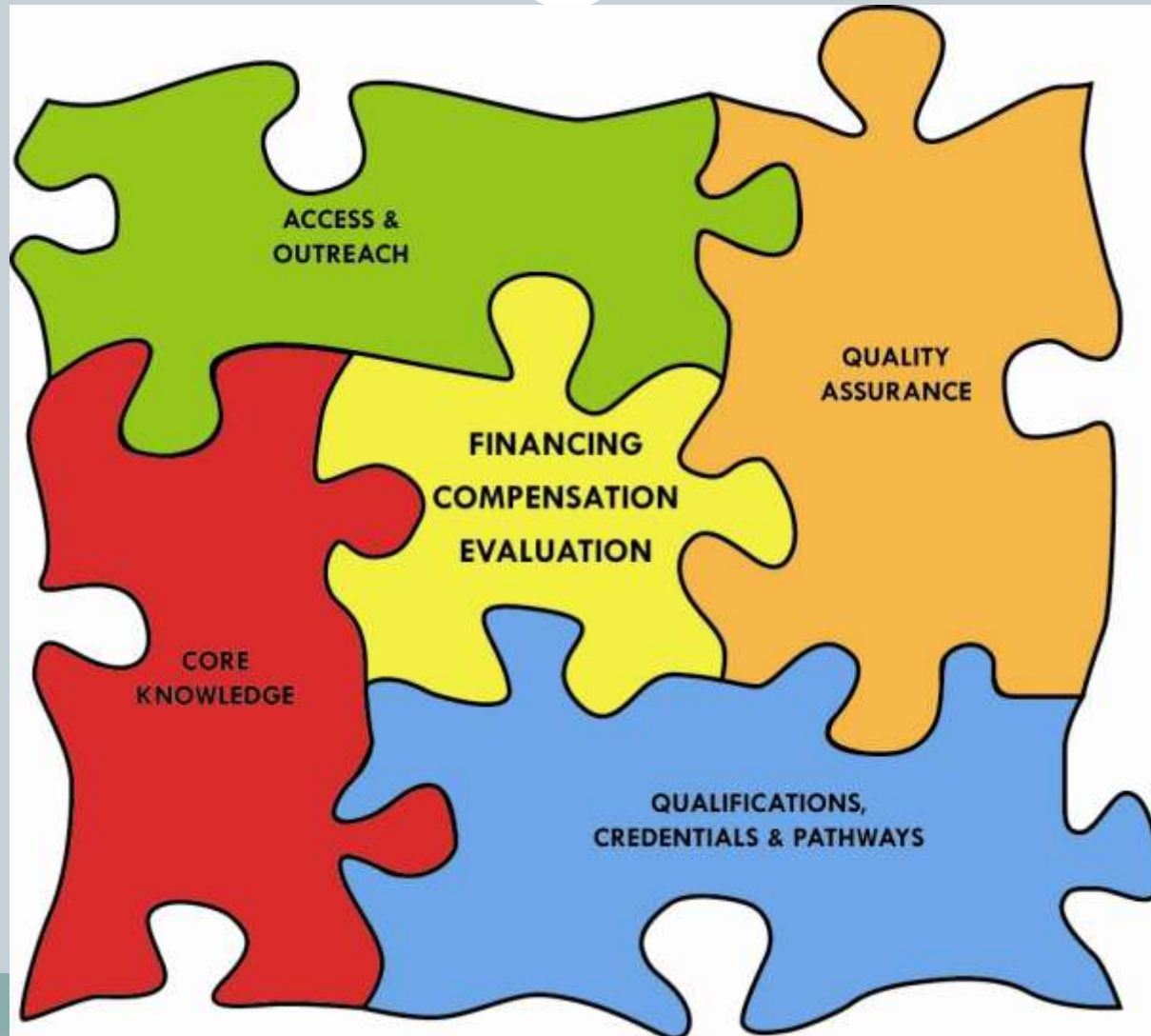
3

Professionals who work in a variety of programs:

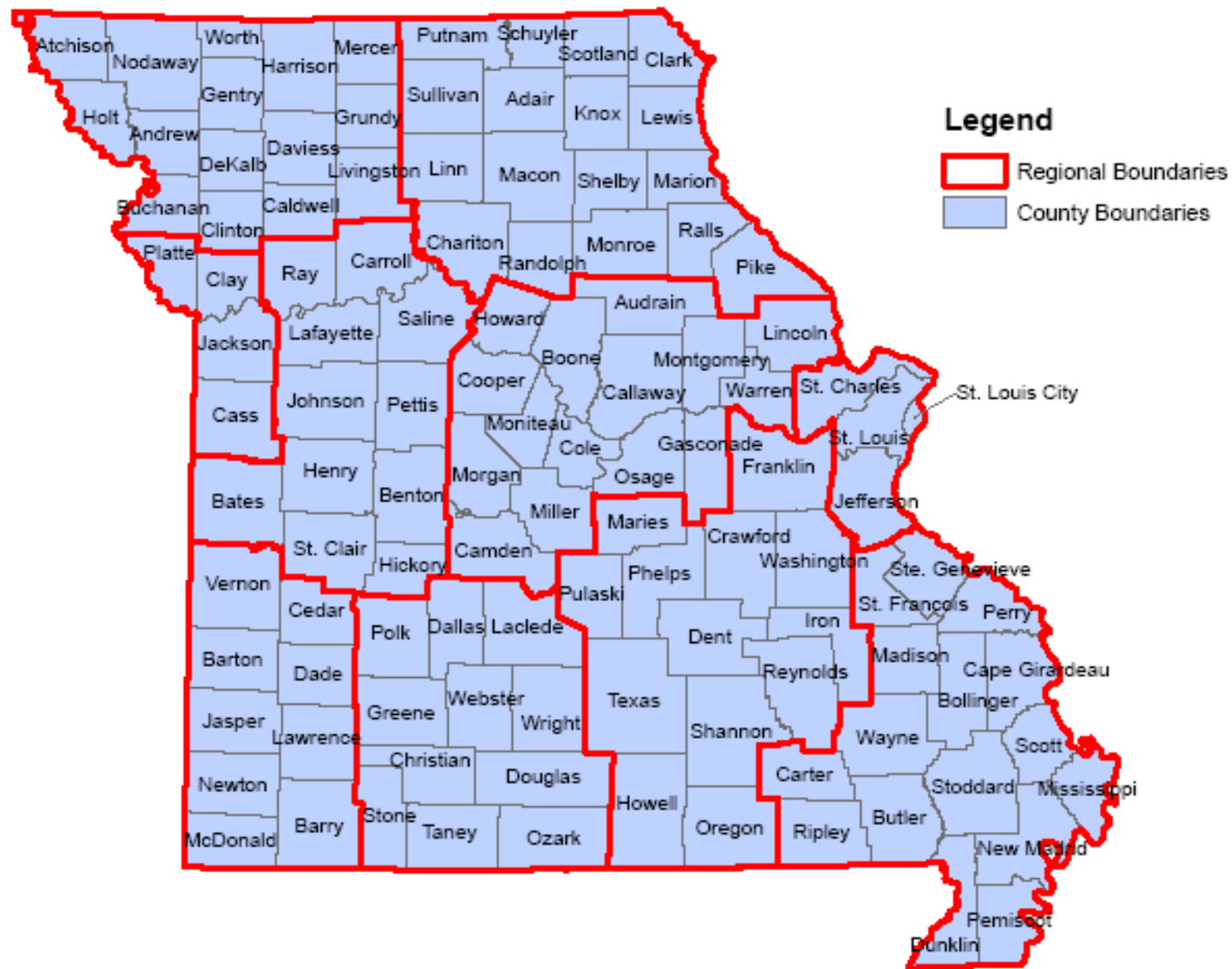
- Preschools
- Child Care Centers
- Head Start/Early Head Start
- Pre-K
- Before-and afterschool
- Title I
- Family child care
- Early childhood special education
- FFN's (Families, Friends, and Neighbors)
- Parenting Education

# What would a system look like?

4



# Educational Regions



Data Source: Department of Elementary and Secondary Education, 2010  
Map Prepared By: University of Missouri Extension, Office of Social and Economic Data Analysis (OSED)

Map Generated On: 25 Aug 2010

# Definitions of coaching, mentoring . . .

6

## Coming Soon

- NAEYC and NACCRRA's training and TA glossary will be released in March.
- NAEYC will be working with the Alliance of Early Childhood Teacher Educators (a collaboration of ACCESS and NAECTE) to develop national education related definitions as a companion to the training and TA glossary.

# PD Vision, Mission . . .

7



# PD System or Workforce

8

- What needs a vision and mission?
  - PD System?
  - Workforce?
- Do we want values or guiding principles?
- Is the PD System for:
  - A. Early childhood professionals**
  - B. After-school professionals**
  - C. Youth development professionals**
  - D. Family support and parent education professionals**
  - E. A, B, and C**
  - F. All of the above**
- Following the March 10<sup>th</sup> session, we will need to finalize these documents!



# Vision (System)

9

- Missouri Professional Development is a seamless and integrated system of supports that expands capacities and builds competencies in those who provide education to children and families.
- Missouri Professional Development is a seamless and integrated system to provide support to those working with children and families. It is aligned with K-12 education, linked to higher education, and supports child development and school success.

# Mission

10

- To provide coordinated professional development experiences that enhance skills, knowledge and career opportunities, and support high quality programs.
- To ensure a comprehensive, coordinated system of learning opportunities that give professionals the knowledge, skills, dispositions and experiences they need to provide the best services to children and families in Missouri.

# System Development Plan

11



# Head Start T & TA

12



# The Team

13

**Sarah Mills**

**Rhodanne Schiller**



# Our vision for the work

14

**Making**

**Opportunities;**

**Visioning**

**Excellence**

# Roadmap to Excellence

15

## Missouri State Early Childhood Technical Assistance Center

Working as part of the larger team to support local grantees, make a difference within the state of Missouri, support our colleagues in Region VII, as well as nationally, to insure that all Head Start and Early Head Start children enjoy success in school and in life.





# Our work

16





# Where we work

17



21 grantees and 5 delegates with 16,793 funded enrollment, with over 21,000 actually served.

84% of the children served are under the federal poverty guidelines.

# CLASS

18

Planning and Consistency of message

Engaging and preparing staff for  
implementation of CLASS

- CLASS Training
- Follow up
- Community of Practice
- Coaching

Integration of Learning from Assessment

# Family Engagement

19

- Introducing CLASS to families
- Transitions demonstration project in Appleton City
- Grand parents support
- Advanced Home Visiting
- Adolescent training
- Recruiting and supporting parent volunteers demonstration project with YIN in St Louis



# Professional Development

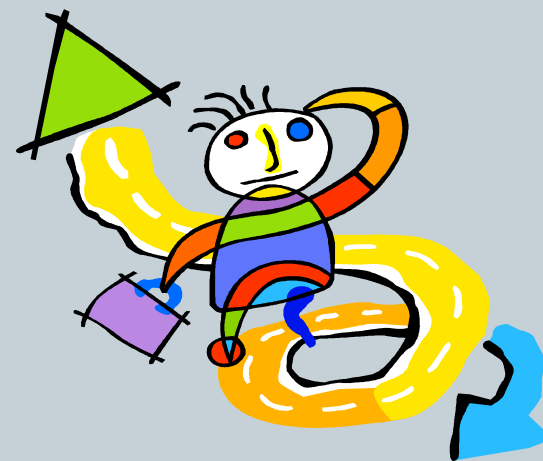
20

- Learning from Assessment for Professional Development and Planning
- Support CLASS training for state partners.
- Developing a plan for CEUs and clock hours in partnership with OPEN--Missouri's Career Development Initiative
- Demonstration project with OACAC Early Head Start in Springfield

# What's next?

21

- Develop a year long webinar schedule in collaboration with MHSA
- Working with Collaboration, DESE, MHSA, OPEN to establish a State Training Plan.
- Support the current MHSA Disabilities work to address issues related to Early Intervention
- Participation on the Coordinating Board for Early Childhood Professional Development Workgroup



# A final word....

22

- Sarah and I are honored to be a part of this great team and to serve ICF, Regional Office, and our colleagues to insure that every grantee is well equipped to give children and families what they need to succeed.



# Contact Information

23

- Rhodanne M. Schiller MS Ed  
Missouri State Manager/ECE and IT Specialist  
[rschiller@icfi.com](mailto:rschiller@icfi.com)
- Sarah Mills  
Missouri Early Childhood Specialist  
[smills@icif.com](mailto:smills@icif.com)
- <http://eclkc.ohs.acf.hhs.gov/hslc>

# Youth Development PD Overview

24





# Facts about Afterschool and more . . .

- Afterschool provides youth with academic enrichment opportunities designed to reinforce and complement regular school day academic curriculum during non-school hours.
- 32% of MO's K-12 children are responsible for taking care of themselves after school.
- 89% of adults surveyed in MO agree that there should be "a place for children and teens to go after school every day that provides opportunities to learn."
- "Children and youth spend only 27% of their time in school. Students motivated and engaged in learning (in school and in community settings) are more likely to succeed. Research documents that quality out-of-school time opportunities are linked to on-time graduation."

# DESE Afterschool Grants

26

- **21<sup>st</sup> Century Community Learning Centers (CCLC)**
  - \$17.3 Million (FY11)
  - 72 Grantees/158 Sites
  - Serving over 16,000 youth K-12
  
- **School Age Community (SAC)**
  - \$1.3 Million (FY11)
  - 31 Grantees/53 sites
  - Serving over 4,000 youth K-12

# Missouri AfterSchool Network

27

- One of 39 Statewide Networks est. in 2002 with initial funding from C. S. Mott Foundation
- 3 Primary Goals
  - Foster Partnerships
  - Secure Resources
  - Ensure Quality
- In 2005 Partnership between 4H/Extension and DESE to establish Afterschool Resource Center

# Missouri Afterschool Resource Center

28

- 5-7 Afterschool Regional Educators (AREs)
- Technical Assistance and PD to all grant-funded afterschool programs
- “The Road to Quality,” on-site support, and regional trainings
- Program Standards and Core Comps are foundation for TA helping programs achieve licensure, accreditation, and “MO Quality”

# Project LIFTOFF

29

- Current Mott Foundation Grant
- NSF grants:
  - National Partnership for After School Science (year 2)
    - ✦ Professional development model
    - ✦ Network of trainers
    - ✦ Curriculum Dissemination
  - Dimensions of Success (Year 1)
    - ✦ Program quality observation tool
    - ✦ \$ to support evaluation in MO
- Noyce Foundation Grant (began in May)
  - Building state systems for informal science education
  - Midwestern collaboration: IA, IN, KS, KY, MI, NE, OH, OK

# Missouri's Professional Development Portal for Early Childhood and Afterschool Programs

30



# MOPD Partners

31

- Child Care Aware® of Missouri
- Department of Health and Senior Services – Section for Child Care Regulation
- Department of Social Services – Children’s Division
- OPEN Initiative

# MOPD Portal Purpose

32

- Starting point for information relating to early childhood and afterschool
  - Professional Development
  - Quality Improvement
  - Funding
  - Access
  - Links to other organizations



# MOPD Portal Image

33

- User friendly/easy to navigate
- Inviting
- Photos
- Equal emphasis on both early childhood and afterschool



## Utah Early Childhood Professional Development Connections



*supporting professionals, connecting programs and strengthening systems*

### PARENT SUPPORT

#### Resource Support



### STUDENT SUPPORT

#### Overview of the Early Childhood Field

How is "early childhood" defined and what are the professional opportunities?

#### Utah Institutions of Higher Education

What colleges and universities in Utah have early childhood programs?

#### On-line Degrees

Are there other ways and opportunities for Utah students to receive a degree?

#### Financial Aid Resources

Where can you find information about financial aid resources?

#### Job Opportunities

What jobs are currently open in the early childhood field in Utah?



### PROGRAM SUPPORT

### COMMUNITY-BASED TRAINING OPPORTUNITIES

## Resource Support



### Overview of the Early Childhood Field

How is "early childhood" defined and what are the professional opportunities?

### Utah Institutions of Higher Education

What colleges and universities in Utah have early childhood programs?

### On-line Degrees

Are there other ways and opportunities for Utah students to receive a degree?

### Financial Aid Resources

Where can you find information about financial aid resources?

35

### Job Opportunities

What jobs are currently open in the early childhood field in Utah?



## PROGRAM SUPPORT

### Overview of Cross-Sector Professional Development

What does cross-sector mean and how is Utah supporting the early childhood profession?

### Standards and Guidelines

What standards and guidelines assist early childhood programs in providing high quality services?

### Interagency Collaboration

What work is currently underway in Utah for interagency coordination and collaboration?

### Utah Early Childhood Projects

Whats currently happening in Utah?

### Links to Early Childhood Web Sites

What other early childhood web sites would be helpful?

## COMMUNITY-BASED TRAINING OPPORTUNITIES

### Training Agencies and Organizations

Who provides early childhood training in Utah?

### Training Opportunities

What training opportunities can be shared with all early childhood professionals?

### Conferences & Events

What early childhood conferences are scheduled for this year?







# Center for Early Childhood Professional Development



## TRAINING OPPORTUNITIES

[REWARD OKLAHOMA](#)

[OKLAHOMA TRAINING APPROVAL SYSTEM](#)

[THE OKLAHOMA REGISTRY](#)

[ENVIRONMENT RATING SCALES](#)

[APPROVED EDUCATORS](#)

[TRAINING FOR CHILD CARE CAREERS/PATHWAY](#)

[CDA/CCP INFORMATION](#)

[EARLY LITERACY INNOVATIONS](#)

[LEADERSHIP ACADEMY](#)

[VIDEO LENDING LIBRARY](#)

[EARLY LEARNING GUIDELINES](#)

[FOCUSED PORTFOLIOS](#)

[READY TO LEARN](#)

[CREATING EFFECTIVE LEARNING ENVIRONMENTS](#)



College of Continuing Education  
University of Oklahoma



## UPCOMING TRAINING and EVENTS

**2nd Annual Literacy Coaching Institute (Early Literacy Innovations)**  
[February 24 - 26, 2011](#)

**Creating Effective Learning Environments (20 clock hours & 2 CEUs)**  
[March 4 - 5 & 25 - 26, 2011](#)

**Leadership Academy II**  
[Part 1: February 23-24-25, 2011](#)

**Online Courses** - Earn CDA hours, Renewal hours, and hours for Licensing

[Literacy in Action \(Early Literacy Innovations\)](#)  
[Entry Level Child Care Training \(ELCCT\)](#)  
[\(OTAS\) Approved Tier II Training](#)

## WHAT'S NEW!

- [Sign Up for Email Newsletter](#)
- [Event Registration Form for Trainers](#)
- [Child Care Providers Resource](#)



**Ask Judith**

[Click here to email Judith with your questions](#)

## QUICK LINKS

[Licensing Workers Quick Reference](#)  
[About Accreditation Helpful Links](#)  
[Dept. of Human Services](#)



Search

# Portal Content

37

- I want to...
  - Get a MOPD ID
  - View/update/establish your organization
  - Offer a workshop
  - Register for a workshop
  - View professional development records

**TRAINING OPPORTUNITIES**

**REWARD OKLAHOMA**

**OKLAHOMA TRAINING APPROVAL SYSTEM**

**THE OKLAHOMA REGISTRY**

**ENVIRONMENT RATING SCALES**

**APPROVED EDUCATORS**

**TRAINING FOR CHILD CARE CAREERS/PATHWAY**

**CDA/CCP INFORMATION**

**EARLY LITERACY INNOVATIONS**

**LEADERSHIP ACADEMY**

**VIDEO LENDING LIBRARY**

**EARLY LEARNING GUIDELINES**

**FOCUSED PORTFOLIOS**

**READY TO LEARN**

**CREATING EFFECTIVE LEARNING ENVIRONMENTS**

## Welcome

As you well know, children need to spend their most critical years with dedicated, educated, trained, and well-compensated individuals in order to thrive in today's society. The NYC Early Childhood Professional Development Institute(PDI) serves early childhood professionals of all kinds, including:

- licensed teachers in school and community settings;
- registered and informal family child care providers;
- Head Start teachers and staff;
- Infant/Toddler Specialists and
- Early Intervention providers.

### **Education and professional development opportunities**

Search our [college and university listing](#) for educational institutions with degree and continuing education programs in early childhood

Browse our [professional development calendar](#) for opportunities throughout the city and state

### **Career advising and resources**

Call or visit our [Career Development Services Center](#) to work one-on-one with a career advisor or to sign up for our workshops.

Explore [careers in ECE](#) to learn about ways you can get involved in the field.

Find [job opportunities](#) posted daily in your field.

### **Keep up with latest in early childhood research and publications**

PDI's quarterly newsletter, [Early Childhood News](#), including best practices, articles and latest news from the field.

PDI's [policy briefs](#) about the issues affecting children, families, and you.

Search or browse our [database of research](#) on child development, career development, and leadership.

### **Connect with your colleagues**

Join us on [PDI's Facebook page](#).

Check out [blogs and forums](#) that support your work.

[Join Our Mailing List](#)



We hope you'll find what you need here.

If you don't, please [let us know](#) what's missing!

[Meet with a career advisor](#)

[Find professional development](#)

[Licensing and certification information](#)

[Find job opportunities](#)

[Learn about careers in ECE](#)

[Professional organizations](#)

[Early childhood research database](#)

[Early Childhood News](#)

[PDI's Policy Briefs](#)

[Activities for the classroom and around the city](#)





[Education  
& Training](#)

[Career  
Development](#)

[Informal Family Child  
Care Project](#)

[Research and  
Public Policy](#)

[Early Childhood  
Education Resources](#)

## Welcome

The NYC Early Childhood Professional Development Institute (PDI) sees policymakers, leaders of professional organizations, and early childhood program directors as key partners in raising the bar for early childhood education in our city and state. As leaders, you can help to shape the direction of the field and inspire the early childhood workforce.

### **Resources for early childhood program directors**

Find trainers on the [NYS training source](#), a registry of workshop trainers, consultants and mentors from around the state.

Find conferences and other professional development opportunities for you and your staff on our [professional development calendar](#).

Browse our [policy links](#) to get involved with the forces of change in early childhood.

### **Keep up with early childhood research and publications**

PDI's [policy briefs](#) about the issues affecting children, families, you and your colleagues

PDI's quarterly newsletter, [Early Childhood News](#), including best practices, articles and latest news from the field

Search or browse our [database of research](#) on child development, career development and leadership

### **PDI's current projects**

Field test of [QUALITYstarsNY](#), New York's Quality Rating and Improvement System.

[NYS Early Learning Trainer Credential](#)

[Excellence in Teaching Recognition Award](#)

[Career Development Services Center](#)

[CPAC: Children's Program Administrator courses](#)

[Informal Family Childcare Project](#)

[Join Our Mailing List](#)



We hope you'll find what you need here.  
If you don't, please [let us know](#) what's missing!

[NYS Early Learning Trainer  
Credential](#)

[NYS Early Learning Training  
Source](#)

[Conferences and Events](#)

[Early childhood research  
database](#)

[Early Childhood News](#)

[PDI's policy briefs](#)

[Career Development Services  
Center](#)

[Informal Family Childcare  
Project](#)



# New York City Early Childhood Professional Development Institute

*Developing Adults Working with Developing Children*

En Español

CUNY  
The City University of New York



[Home](#) | [Contact Us](#) | [About Us](#) | [Site Map](#) | [Search](#)

Education & Training

Career Development

Informal Family Child Care Project

Research and Public Policy

Early Childhood Education Resources

## Welcome

The NYC Early Childhood Professional Development Institute (PDI) is committed to working with you to provide all of New York's early childhood professionals with access to high-quality professional development.



### Individual trainers

Apply for the [NYS Early Learning Trainer Credential](#)

Advertise Your Training Services on the [NYS Early Learning Training Source](#)



### Training organizations

Create a Training Organization Profile on the [NYS Early Learning Training Source](#)

Add your professional development workshops and events to PDI's [professional development calendar](#)



### Resources for trainers

NYS Early Learning [Trainer Levels](#)

NYS Early Learning [Trainer Competencies](#)

[NAEYC Code of Ethical Conduct: Supplement for Early Childhood Adult Educators](#)

Search or browse [our database of research](#) on child development, career development and leadership.

Check out our [Excellence in Teaching Award Winners interview videos](#) to hear teachers talk about excellence and what drives them.

Read our quarterly newsletter, [Early Childhood News](#), for best practices, articles and latest news from the field.

[Join Our Mailing List](#)



We hope you'll find what you need here.  
If you don't, please [let us know](#) what's missing!

[NYS Early Learning Trainer Credential](#)

[NYS Early Learning Training Source](#)

[NYS Early Learning Trainer Levels](#)

[NYS Early Learning Trainer Competencies](#)

[NAEYC Code of Ethical Conduct Conferences and Events](#)

[Add your event to our calendar](#)

[Early childhood research database](#)

[Early Childhood News](#)

[PDI's Policy Briefs](#)

[Excellence in Teaching Recognition Award](#)



## Overview

## College Education

## Certification & Licensure

## Compensation & Benefits

## Continuing Education

## My Profession

## NC Approach

## NC Workforce

## Projects

The NC Institute for Child Development Professionals provides both free and fee-based services. The Institute

- Defines and educates others about early childhood professional development system elements and strategies
- Certifies Early Educators who work directly with, <sup>41</sup> on the behalf of or intend to work with children ages birth to twelve
- Provides consultation services on professional development strategies, systems development and grant development
- Produces tools, publications, research and reports and collects and disseminates data about the NC Early Educator workforce
- Builds and supplies high quality training opportunities for Early Educators on professional development planning for individuals, organizations and systems
- Creates access to resources and the latest research on workforce issues through its partner network and learning community and via its website
- Supports the provision of professional development services through trainings, networking opportunities and resources
- Offers networking opportunities for Early Educators through in-person and virtual events

Why is a strong early childhood professional development system important? Over the last two decades there has been increasing interest in learning about the experiences of children in early care and education settings: what settings are good and how early care and education influences later school performance and behavioral patterns. In particular, we have learned a great deal in recent years about the benefits and cost of high-quality early care and education services, and how to improve programs to meet the needs of all children. This has increased the need to shift from scattershot training to intentional forms of professional development to build and retain a high qualified workforce. Today, like other occupations, education is the currency with which the early childhood professional development system is being constructed.

Professional development refers to a combination of education, training and continuing education. Well-designed professional

## Collaboration & Planning

Ongoing and grant-funded efforts are underway in North Carolina at the state level within agencies and organizations as well as efforts focused specifically on professional development, but are not limited to:

### ■ NC Institute for Child Development Professionals

The Institute is composed of stakeholders who work directly with children or on the behalf of children in a variety of settings. Teachers, family child care home providers, administrators, schoolage group leaders, faculty, education coordinators, agency and program directors, consultants, specialists, researchers and more work together to build and strengthen NC's approach to professional development, striving for a comprehensive professional development system for all Early Educators. The ongoing work of the Institute is conducted through a [task group and committee structure](#).

### ■ NC Early Childhood Regional Planning Project

### ■ North Carolina Head Start Collaboration Office

### ■ Head Start Training & Technical Assistance Plan

The state's Head Start Training and Technical Assistance Plan is managed by [STG International](#) as of August 2009. This work is conducted via a cadre of content and technical assistance specialists in state-based offices and regional Head Start locations across the country. In addition to conducting individual and cluster trainings, STG experts routinely help grantees meet Federal regulations; implement monitoring and self-assessment processes; and foster collaboration between the Office of Head Start, state-based early childhood partners, and other training and technical assistance (T/TA) professionals.

### ■ North Carolina Interagency Coordinating Council (NCICC)

### ■ National Professional Development Center on Inclusion (NPDCI)

### ■ NC Early Childhood Advisory Council (ECAC)

### ■ North Carolina Center for Afterschool Programs Professional Development Work Group

# Potential Features of the MOPD Portal

42

- Get your MOPD ID
- Establish your Organization



supporting professionals, connecting programs and strengthening systems

TRAINING OPPORTUNITIES

REWARD OKLAHOMA

OKLAHOMA TRAINING APPROVAL SYSTEM

THE OKLAHOMA REGISTRY

ENVIRONMENT RATING SCALES

APPROVED EDUCATORS

TRAINING FOR CHILD CARE CAREERS/PATHWAY

CDA/CCP INFORMATION

EARLY LITERACY INNOVATIONS

LEADERSHIP ACADEMY

VIDEO LENDING LIBRARY

EARLY LEARNING GUIDELINES

FOCUSED PORTFOLIOS

READY TO LEARN

CREATING EFFECTIVE LEARNING ENVIRONMENTS

### MOPD ID Sign Up

Thank you for your interest in registering for a Missouri Professional Development Identification Number (MOPD ID). This ID is used jointly by the OPEN Initiative for the Professional Achievement & Recognition System (PARS) and the Trainer Registry and the Missouri Child Care Resource and Referral Network (MOCCRRN) for the Training Calendar. Please complete the form below and the system will assign you a MOPD ID and generate an e-mail to the e-mail account you provide.

Please note: Although you will be able to use your MOPD ID, you will not be enrolled in either PARS or the Trainer Registry. You will still need to complete the PARS or Trainer Registry form.

#### Personal Information

Last Name:	<input type="text"/>	First Name:	<input type="text"/>	Middle Name:	<input type="text"/>
Date of Birth:	<input type="text"/>	Last 5 SSN:	<input type="text"/>		
Email:	<input type="text"/>	Confirm Email:	<input type="text"/>		

[Next](#) [Cancel](#)



supporting professionals, connecting programs and strengthening systems

TRAINING OPPORTUNITIES

REWARD OKLAHOMA

OKLAHOMA TRAINING APPROVAL SYSTEM

THE OKLAHOMA REGISTRY

ENVIRONMENT RATING SCALES

APPROVED EDUCATORS

TRAINING FOR CHILD CARE CAREERS/PATHWAY

CDA/CCP INFORMATION

EARLY LITERACY INNOVATIONS

LEADERSHIP ACADEMY

VIDEO LENDING LIBRARY

EARLY LEARNING GUIDELINES

FOCUSED PORTFOLIOS

READY TO LEARN

CREATING EFFECTIVE LEARNING ENVIRONMENTS

### MOPD ID Sign Up

Thank you for your interest in registering for a Missouri Professional Development Identification Number (MOPD ID). This ID is used jointly by the OPEN Initiative for the Professional Achievement & Recognition System (PARS) and the Trainer Registry and the Missouri Child Care Resource and Referral Network (MOCCRRN) for the Training Calendar. Please complete the form below and the system will assign you a MOPD ID and generate an e-mail to the e-mail account you provide.

Please note: Although you will be able to use your MOPD ID, you will not be enrolled in either PARS or the Trainer Registry. You will still need to complete the PARS or Trainer Registry form.

#### Personal Information

Last Name: <input type="text" value="Test"/>	First Name: <input type="text" value="Tracy"/>	Middle Name: <input type="text" value="T"/>
Date of Birth: <input type="text" value="01/01/1971"/>	Last 5 SSN: <input type="text" value="12345"/>	
Email: <input type="text" value="pulkest@missouri.edu"/>	Confirm Email: <input type="text" value="pulkest@missouri.edu"/>	

Message Adobe PDF

Reply Reply to All Forward Call IM

Delete Move to Folder Create Rule Other Actions

Block Sender Safe Lists Not Junk

Categorize Follow Up Mark as Unread

Find Related Select Send to OneNote

Respond Actions Junk E-mail Options Find OneNote

From: umcheshdfs-open@missouri.edu  
To: Foulkes, Teresa D.  
Cc:  
Subject: MOPD ID Confirmation

Sent: Mon 4/5/2010 12:04 PM

Welcome, Tracy Test

Your MOPD ID is: **810838**

Congratulations! You have successfully registered for a MOPD ID. Please remember that your registration for a MOPD ID **does not** enroll you in the Professional Achievement & Recognition System (PARS) or the Trainer Registry. If you would like to enroll in PARS or the Trainer Registry you may do one of the following.

New Text about MOPD Partnership



# Trainer Authorization

46



# Types of Authorization

47

- The type of authorization is directly linked to:
  - Core Competencies Content Areas
  - Core Competencies Levels
  - Core Competencies Indicators
  - Age groups of the audience

(See chart)





# Recommendation from Trainer Authorization Committee

49

- Early Childhood and Youth Development trainers can train both age groups in:
  - Families and Communities
  - Program Planning & Development
  - Professional Development & Leadership
- All other types can train both age groups because the authorization is based on the criteria in other fields and not separated by age groups

# Recommendation from Trainer Authorization Committee

50

- The authorization type is tied to both the indicators (objectives) of the training and to the age groups served by the audience

# Additional Training Endorsements

51

- In addition to meeting the criteria to be an Authorized Trainer (one of the types on the previous chart), individuals may also have specific training endorsements

(See chart – not exhaustive list)

# Steps in the Authorization Process

52

- Enroll in the registry
- Submit documentation of education or credentials (field/training specific)
- Declare experience
- Document Family Care Safety Registry information
- Complete orientation
- Consent to Authorization policies and data sharing with Workshop Calendar

# Training Approval...

53

**CHILD CARE AWARE® OF MISSOURI**



# Getting Started

54

After a trainer has received a Trainer Authorization Number they are ready to move to the Training Approval process.

# Types of Events

55

- Standard
  - Onsite
  - Established group
  - Public
- Conference
- Online/distance
- Pre-approved

# Training Approval Process

56

- Each training will need to be submitted for approval by completing an application process

## Standard and Online/Distance Events

- 30 day processing time
- Approval will be good for a 3 year timeframe

## Conferences

- 60 day processing time
- One time approval



# Approval Criteria

57

- Trainer/MOPD ID
- Title of Event
- Number of Clock Hours Requested
- Brief Description
- Target Audience
- Age Group Focus

# Approval Criteria

58

- Presentation Format (onsite, online, etc.)
- Core Competency
  - Content Area / Sub Content Area / Competency
- CDA Subject Area
- Outcomes/Benefits
- Learning Objectives (can be competency)
- Outline
- References

# Additional Criteria

59

- **Online/Distance**
  - Delivery method (Online-synchronous, ITV, etc.)
  - Access to materials
  - Communication with participant
  - Technical support provided
  - How participation and course completion are verified

# Conference

60

- A one time event which must have...
  - Sponsoring organization(s)
  - Concurrent sessions
  - Selection process
  - Selection committee comprised of at least 2 Authorized Trainers
- Sessions must be a minimum of 1 clock hour

# Conference Approval Criteria

61

- **Trainer/MOPD ID**
- **Title of Event**
- **Date**
- **Start/End Time**
- **Session Description**
- **Core Competency**
  - Content Area / Sub Content Area / Competency

# Pre-Approved Events

62

- A list of regional and national events that will be accepted for clock hours
- Participants will complete a Pre-Approved Event Evaluation Form and submit it along with proof of attendance to OPEN within 60 days after the event to receive credit

# Approved Trainings...

63

**CHILD CARE AWARE® OF MISSOURI**



# Approved Trainings

64

- **Must be posted to the Missouri Workshop Calendar**
  - [www.moworkshopcalendar.org](http://www.moworkshopcalendar.org)
  - Public event vs. Private event
- **Preference to have participants register online**



# Approved Trainings

65

- Standardized sign in sheet
- Attendance to be entered within 10 business days after the event
- Certificates will display standardized information including training approval number

# Advantages of System

66

- Professionals can easily locate trainings across the state
- Easy transfer of training attendance into PARS
- Trainers have a centralized location to advertise their events
- Accurate way to track what training is being offered

# Workshop Calendar

67

[WWW.MOWORKSHOPCALENDAR.ORG](http://WWW.MOWORKSHOPCALENDAR.ORG)



## Missouri Workshop Calendar

Sponsored by:



For Early Childhood  
and Youth Development  
Professionals

[Home](#) | [Calendar](#) | [Search](#)

[Sign In](#)

Week

Month

Event List

By Request



Print

[This month.](#)

◀ [February 2011](#)



Sun	Mon	Tues	Wed	Thur	Fri	Sat
30	31	1	2	3	4	5
	<a href="#">Childcare Facil..</a> <a href="#">Emergency Prepa..</a> <a href="#">1, 2, 3 - It is..</a> <a href="#">2 more...</a>	<a href="#">Home Visit Trai..</a> <a href="#">[CANCELLED] Cha..</a> <a href="#">Socializing Hea..</a> <a href="#">3 more...</a>	<a href="#">Music: The Univ..</a> <a href="#">LEADERSHIP + EX..</a> <a href="#">[CANCELLED] PCA..</a> <a href="#">2 more...</a>	<a href="#">CACFP Child Car..</a>	<a href="#">CACFP Child Car..</a> <a href="#">[CANCELLED] Chi..</a>	<a href="#">[CANCELLED] Chi..</a> <a href="#">[CANCELLED] Cor..</a> <a href="#">Core Knowledge ..</a> <a href="#">8 more...</a>
6	7	8	9	10	11	12
	<a href="#">Providers Advan..</a>	<a href="#">Childcare Provi..</a> <a href="#">Seizure Trainin..</a> <a href="#">Seizures..</a> <a href="#">8 more...</a>	<a href="#">Online Training..</a> <a href="#">Online Training..</a> <a href="#">Online Training..</a> <a href="#">3 more...</a>	<a href="#">Structure Your ..</a> <a href="#">[CANCELLED] Int..</a> <a href="#">Introduction to..</a> <a href="#">1 more...</a>		<a href="#">"Healthy Habits..</a> <a href="#">CPR Training..</a> <a href="#">The Creative Cu..</a>

## Clock hour training event editor

Close Event ▼ Print ▼ Registration (Off)

New: This event is new or has been returned to a "new" state. It is not in workflow and has not been published.

Event description

Target Audience

Registration settings

### GENERAL INFORMATION

#### Name of activity

#### Date and time of activity

Set a single date:

Select date:

Start time:  :  am ▼

End time:  :  am ▼

Select repeating or multiple dates

The date selector will appear after you save.

Make available by request

#### Sponsor

#### Fee eligibility applies.

Child Care Aware Staff only: make sure that this box is checked if this activity may qualify for fee reduction.

#### Description

### SELECT REGION

Select the region where this activity will take place.

*If the training will take place in more than one region, choose the region that is the main place of business of the trainer.*

Central Region

Eastern Region

Southern Region: Council of Churches of the Ozarks

Western Region: The Family Conservancy

[View Child Care Aware® of Missouri Regions](#)

### TRAINER(S)

#### Trainer information

## Configure registration options

Registration is:	<input type="radio"/> ON <input checked="" type="radio"/> OFF	
Make registration private:	<input type="checkbox"/>	Events with private registrations will not display registration links on the calendar.
Enable waitlist:	<input type="checkbox"/>	
Enable automatic confirmation:	<input type="checkbox"/>	If selected, registrants will be automatically confirmed. Use the automatic confirmation feature when you do not need to verify payment or other documentation for registration.
Maximum number of registrants	<input type="text" value="0"/>	If the maximum number of registrants is 0, and <b>waitlist is enabled</b> , then all registrants will be added to the waitlist.
Date to open registration	<input type="text"/>	
Date to close registration	<input type="text"/>	
	<input type="button" value="Update settings"/> <input type="button" value="Cancel and return to event"/>	

## Clock hour training event editor

Close Event Print Manage reg. & attendance Manage Workflow & publication Window

Manage reg. & attendance  
Print sign in sheet  
53 registered participants.  
Turn registration off  
Change reg. properties

been published to the calendar.

[Register](#)

### Event description

### Target /

#### GENERAL INFORMATION

##### Name of activity

Social Emotional Child Care Orientation Training, Module 2: Environment, Routine and Strategies

##### Date and time of activity

Saturday, March 5, 2011 8:00 AM - 11:00 AM

[Change date/time](#)

##### Sponsor

Child Care Aware of Missouri, Eastern Region

##### Fee eligibility applies.

Child Care Aware Staff only: make sure that this box is checked if this activity may qualify for fee reduction.

##### Description

Do you want to see more positive and fewer challenging behaviors in your child care and early learning program? Discover how consistent routines and fun, meaningful activities can improve those opportunities. Learn how to plan activities that build social and emotional development and promote teacher-child interactions. After this session, you will know how to design your environment, schedule, and routines to help support a child's social and emotional development

#### SELECT REGION

##### Select the region where this activity will take place.

*If the training will take place in more than one region, choose the region that is the main place of business of the trainer.*

- Central Region
- Eastern Region
- Southern Region: Council of Churches of the Ozarks
- Western Region: The Family Conservancy

[View Child Care Aware® of Missouri Regions](#)

#### TRAINER(S)

##### Trainer information

Mary Beth Huxel



## Manage registration and attendance for Social Emotional Child Care Orientation Training, Module 2: Environment, Routine and Strategies

[Return to Event Form](#)



[Print Sign In Sheet](#)

Waitlist is on. Automatic confirmation is on. The maximum number of registrants is 40.

Registration open date: Friday, February 4, 2011 Registration close date: Saturday, March 5, 2011

[Return to Event Form](#)

[View registration list](#)

[Attendance worksheet](#)

[Confirm and close attendance](#)

### Register a MOCCRRN Participant



[Create registration](#)



[Multiple registration grid](#)

Previously registered Participant

Choose by: Last name

[View group](#)

*Enter all or part of a name (e.g., 'a' or 'Ad' or 'Adams')*

### Confirmed registrants

Ordered by registration date.

	Registrant	Date registered	Date confirmed <i>Auto-confirm is on</i>		Fee info
1.	(Participant)	2/9/11 (9:10 AM)	2/9/11 (9:10 AM)	<input type="checkbox"/>	
2.	(Participant)	2/9/11 (9:12 AM)	2/9/11 (9:12 AM)	<input type="checkbox"/>	
3.	(Participant)	2/9/11 (9:12 AM)	2/9/11 (9:12 AM)	<input type="checkbox"/>	
4.	(Participant)	2/9/11 (9:13 AM)	2/9/11 (9:13 AM)	<input type="checkbox"/>	
5.	(Participant)	2/9/11 (3:52 PM)	2/9/11 (3:52 PM)	<input type="checkbox"/>	

## Manage registration and attendance for Social Emotional Child Care Orientation Training, Module 2: Environment, Routine and Strategies

[Return to Event Form](#)

 [Print Sign In Sheet](#)

Waitlist is on. Automatic confirmation is on. The maximum number of registrants is 40.

Registration open date: Friday, February 4, 2011 Registration close date: Saturday, March 5, 2011

[Return to Event Form](#) [Registration list](#) [Attendance worksheet](#) [Confirm and close attendance](#)

Click to check the box for each date that a participant attended the event. Click **Mark complete** to indicate that the participant completed all the requirements of the event.

Update attendance

Registrant	03-05-2011	Mark complete
	<input type="checkbox"/> <a href="#">Check all</a> <input type="checkbox"/> <a href="#">Uncheck all</a>	<input type="checkbox"/> <a href="#">Check all</a> <input type="checkbox"/> <a href="#">Uncheck all</a>
1.	<input type="checkbox"/>	<input type="checkbox"/>
2.	<input type="checkbox"/>	<input type="checkbox"/>
3.	<input type="checkbox"/>	<input type="checkbox"/>
4.	<input type="checkbox"/>	<input type="checkbox"/>
5.	<input type="checkbox"/>	<input type="checkbox"/>
6.	<input type="checkbox"/>	<input type="checkbox"/>
	03-05-2011	

# Professional Achievement & Recognition System (PARS)

74

***DATABASE SYSTEM THAT  
TRACKS, VERIFIES, AND  
RECOGNIZES EDUCATIONAL  
ATTAINMENT OF PROGRAM  
STAFF***

# Who can enroll in PARS?

75

Anyone who works with children/youth, birth through school-age, such as:

- Early Childhood Educators
  - ✦ Teacher, director, home based owner/director
- School Age/Afterschool Staff
  - ✦ Site facilitator, group leader, assistant group leader, program staff
- Community Youth Development Professionals
  - ✦ Youth worker, youth development practitioner, program staff

# Type of Data in PARS

76

- Demographic
- Employment
- Formal Education
- Credentials
- Training

# Who can access PARS data?

77

- Participant
- Director or Duly Authorized Representative
- Coach
- Funder
- Licensing Specialists

- Home
- History
- Projects
- Resources
- What's New
- Contact Us

Missouri's Professional Development Initiative for Early Childhood and School-Age/After-School Professionals



Welcome Terry Smith

[Log Out](#)

My Info

My Program

Reports

User Options

## OPEN Reports

To run a report, choose the report you want to run from the drop down list and then click the Launch Report link. A new window will load with that report. For better performance, please allow your report to finish loading before clicking Launch Report again.

Reports are displayed in pdf format which requires Adobe Reader. If you do not have Adobe Reader click the Get Adobe Reader button at right.



Choose Report:  [Launch Report](#)

- NAEYC Accreditation Report
- Program Summary Report
- Program Training

DVN/Program Licen

up to 10 minutes)

NAEYC Accreditation Report



Navigation bar of Internet Explorer showing address bar, search, and various toolbars.

## Program Training Report for ABC Sample Center, 000123456

789 N Quality St  
Anytown MO 60000  
(573) 987-6543  
Program Capacity:

---

### Jones , Kim

**Training Title:** Natural Play Environments Workshop

**Training Organization:** KACCRRA

**Trainer(s):**

Cathy Gray

**Training Dates:** 03/06/2009-03/06/2009

**Clock Hours:** 5.50

---

**Training Title:** Block Play and Dramatic Play

**Training Organization:** The Family Conservancy

**Trainer(s):**

Shari Williams

**Training Dates:** 03/12/2009-03/12/2009

**Clock Hours:** 2.00

---

**Training Title:** Books, Language, and Music

**Training Organization:** The Family Conservancy

**Trainer(s):**

Sarah Williams

**Training Dates:** 04/06/2009-04/06/2009

**Clock Hours:** 2.00

---

**Total Training Clock Hours for the Year** 9.50

### Smith , Terry

**Training Title:** Program Administration Scale training

**Training Organization:** Metropolitan Council on Early Learning

**Trainer(s):**

Nancy Mitchell

**Training Dates:** 02/10/2009-02/10/2009

**Clock Hours:** 6.00

---

**Training Title:** Missouri Accreditation Overview Training

**Training Organization:** MO Accreditation

**Trainer(s):**

(training individual not legible)

# Program Data Collection Infrastructure

80



# Data Sources

81

- **OPEN**
  - Organizational Nesting
  - “My Classroom” Data Collection
  - Assessment Data
- **Child Care Aware® of Missouri**
  - Statewide Child Care and Early Learning Program database (all regulation types)
- **Department of Health and Senior Services**
- **Department of Social Services**

# Organizational Nesting

82

- Relationships between organizations
  - Parent organizations
  - Funding relationships
- Relationships between individuals and organizations
  - Director of Record (DOR)
  - Coaching

# My Classrooms

83

- Classroom names
- Staff assigned to classrooms
- Environment Rating Scale scores

# Assessments

84

- **Quality Rating System**
  - Star Rating for Program
  - Program Personnel
  - Program Content
  - Program Management
- **On Site Assessment Project**
  - Program Personnel
  - Program Content
  - Program Management

# Statewide Child Care and Early Learning Program Database

85

- With an established DOR E-mail address, Child Care and Early Learning Programs can directly maintain their facility data in the Child Care Aware® of Missouri statewide database.

# Statewide Child Care and Early Learning Program Database

86

Please log in.



Click the tab below that represents you:

**Provider**   **Staff/Specialist**   **Local Admin**

Email:

Password:

Remember me on this computer

[Login](#)   [Forgot password](#)  
[First time user](#)

**Warning:** All access to this site is logged; unauthorized activity will be prosecuted.

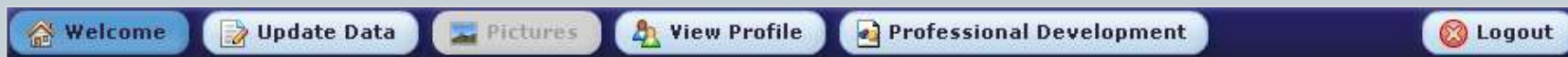
[support@worklivesystems.com](mailto:support@worklivesystems.com)

- Users need DOR E-mail, DVN and Zip to get a password and log in



# Statewide Child Care and Early Learning Program Database

87



Hello, Test.

**Announcement as of 02/11/2011:**

Welcome to the Child Care Aware of Missouri Child Care and Early Learning Program Database. You can update your program information that will be given to families seeking services. Please call to opt out of referrals.

Some of the data about licensed programs such as license ID, address, and contact information is maintained by the Missouri Department of Health and Human Services. Please contact your Child Care Facility Specialist to update that information. If you are not licensed or you have other questions, contact Child Care Aware of Missouri at the e-

# DHSS and DSS Program Data

88

- Child Care Aware® of Missouri uploads DHSS updates to licensing data. Programs must contact licensing about changes to any licensing data.
- Child Care Aware® of Missouri also uploads monthly DSS updates re: numbers of subsidy children served at facilities statewide.

# Early Childhood Assessment

89



# Proposed Standard

90

- Districts providing early childhood programs (voluntary Pre-K through grade 3) implement the Missouri Early Childhood Assessment System to measure student learning and demonstrate improvement in student performance over time.

# A comprehensive look . . .

91

## Assessment System Purpose:

To collect, analyze and report statewide (and, when appropriate, local) data in order to improve young children's (voluntary Pre-K through end of grade 3) learning experiences.

(Goal for completion of the system by 2013-14)

# Developmental Screenings

92

Total Screenings – 48,934  
(as of 1/31/2011)

	Screenings	Referred
Children 6 Months to Age 3	24,134	5%
Children Age 3 to Kindergarten Entry	24,800	17%



# Parent Education Services

93

	<b>All PAT Families</b>	<b>Minority Families</b>	<b>Contacts</b>
High Needs	31,758	9,702 (31%)	110,328
Non High Needs	19,008	5,556 (29%)	40,047
Incarcerated Parents	417	98 (24%)	1,857



# High Needs Characteristics

94

Total High Needs Families – 31,758  
(as of 1/31/2011)

High Needs Characteristics	Families	Percentage
Low Income	23,041	73%
Single-Parent Household	10,460	33%
Involvement with Mental Health or Social Services Agencies	8,637	27%
Child with Disabilities	6,655	21%
Low Educational Attainment	6,567	21%

# Core Knowledge Curriculum

95



# History

96

- **Collaboration among:**
  - Child Care Aware® of Kansas (KACCRRRA)
  - Child Care Aware® of Missouri (MOCCRRN)
  - Illinois Gateways to Opportunity (INCCRRA)
- **Foundation materials:**
  - Basic CCOT, Family CCOT, I/T CCOT (Missouri)
  - PACE (Missouri)
  - Level I Curriculum (Illinois)

# Structure

97

- 14 Modules; 42 Clock Hours, total
- Most workshops 3 hours (some 4 hours)
- Covers all Level I Competencies(except one)
- Content is 66% Level I, 34% Level II:
  - 30% Health Safety & Nutrition
  - 23% Interactions with Children
  - 19% Learning Environment & Curriculum
  - 13% Child Growth & Development

# Content

98

- Responsibilities of Child Care and Early Learning Professionals
- Child Abuse and Neglect
- Child Safety and Prevention
- Routine Care

# Content (cont.)

99

- Keeping our Children Healthy
- Understanding the Whole Child
- Planning for Children
- Interactions with Children
- Guiding Children's Behavior
- Creating a Welcoming Environment

# Content (cont.)

100

- Creating Daily Routines
- Program Planning
- Promoting Wellness
- Professionalism

# Rolling it Out

101

- **First KS TOT – June 2010**
- **First MO TOT – November 2010**
- **First MO session – February 2011**
- **Available statewide from:**
  - Child Care Aware® of Western Missouri (KC)
  - Child Care Aware® of Central Missouri (Columbia)
  - Child Care Aware® of Eastern Missouri (StL)
  - Child Care Aware® of Southern Missouri (Springfield)
- **Available online starting – April 2011**



# Early Childhood Program Standards

102



# Early Childhood Program Standards

103

- The program standards are being revised. It is the hope that ALL early childhood programs can now use the same standards:
  - Voluntary Pre-K (MPP)
  - Title I
  - ECSE
  - Community programs



# Some of the changes . . .

104

- More emphasis on infants/toddlers
- Updated name
- Refined program standards
- Funding stream specific information

Focus for the future: Birth to 3<sup>rd</sup> Grade

Your feedback will be requested in March/April

# Early Learning Standards

105



# Birth to K-Entry Early Learning Standards

106

- Currently the Early Learning Standards are just for preschoolers.
- The Striving Readers grant requires ELS's in Literacy for children birth to 12<sup>th</sup> grade.
- The draft of the Literacy Standards is out for comment.
- All other domains will be completed by September.



# Language and Literacy Components

107

- Symbolic Development
- Speaking/Expressive Language
- Listening/Receptive Language
- Reading
- Writing

# Webinar

108

**March 2<sup>nd</sup>**

**1:30-2:30**

**Feedback needed on the Language and  
Literacy Early Learning Standards**

# PD Work Group Members

109

- Meladee Bay, Whiteman Air Force Base
- Trinette Brewer, Child Care Aware ® of Central Missouri
- Jeff Buehler, MO AfterSchool Network
- Leanne Cantu, Rockwood School District
- Melissa Chambers, CMCA Head Start
- Candace Cheatem, LINC (Kansas City)
- Beth Ewers, DMH (Comprehensive Psychiatric Services)
- Cindy Heislen, DESE (Extended Learning)
- Becky Houf, DSS (Children's Division)
- Becky Hutchings, DHSS (Child Care Health Consultation)
- Jane Joslin, DSS (Children's Division)
- Val Lane, MO Coordinating Board for Early Childhood & EHS NRC
- Charla Myers, First Steps



# PD Work Group Members

110

- Angela Oesterly, DHHS (Child Care Regulation)
- Stacey Owsley, Head Start-State Collaboration Office
- Peggy Pearl, Missouri State University (retired)
- Jo Anne Ralston, DESE (Early Learning)
- Anne Reeder, DESE (Extended Learning)
- Carol Scott, Child Care Aware ® of Missouri
- Rhodanne Schiller, Region VII Head Start T & TA
- Patti Simcosky, Independence Public Schools
- Pam Thomas, DESE (Special Education)
- Kathy Thornburg, DESE and Center for Family Policy & Research
- Cindy Wilkinson, DHSS (ECCS Coordinator)
- Pam Williams, DESE (Special Education)