



CHILDREN'S DIVISION

Stakeholder Call

June 27, 2025

Scan to Register
for the next call



WELCOME

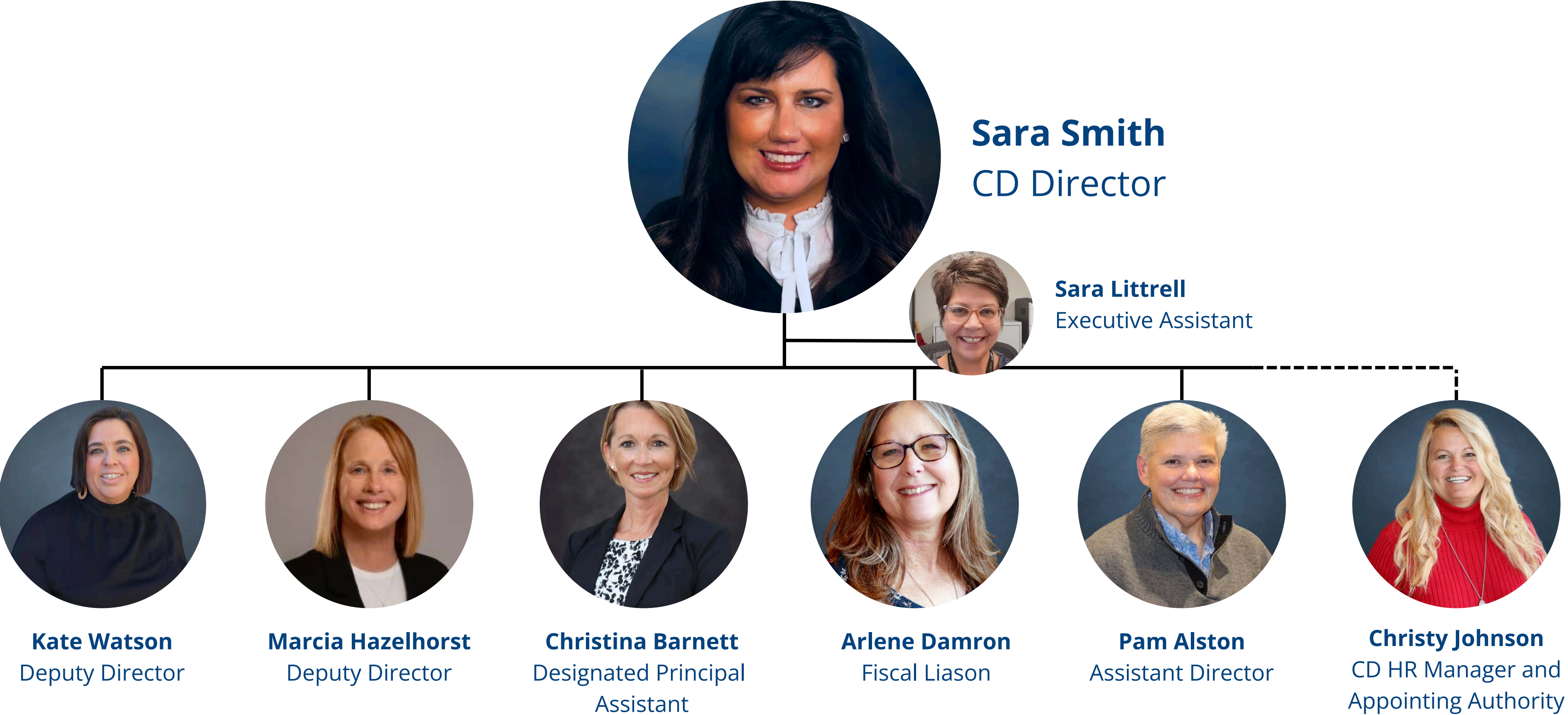
We're glad you're here!

Agenda

1. Welcome
2. HR Updates
3. Fiscal Team Updates
4. Safety Unit Updates
5. Administration and Prevention Updates
6. Permanency Updates
7. Training, PIP, and Field Updates
8. Regional Spotlight - Jackson County
9. Adjourn

**Please type
your questions
in the chat!**

CENTRAL OFFICE STRUCTURE



LUNCH WITH THE CD DIRECTOR

If you're interested in participating in a networking opportunity with Sara Smith, the CD Director, register for one of the following dates using the QR code below! All lunches will be held 12:00 - 1:00 p.m.



Scan to
Register



July 2, 2025 - Camden County

Laclede Electric Cooperation
370 Old South 5
Camdenton, MO 65020

July 7, 2025 - Cole County

Knipp State Office Building - Truman Room
3418 Knipp
Jefferson City, MO 65102

July 14, 2025 - Pettis County

Smith-Cotton High School
2010 Tiger Pride Boulevard
Sedalia, MO 65301

July 28, 2025 - Boone County

The Crossing Church, Room 225
3615 Southland Dr
Columbia, MO 65201

https://moexperience.qualtrics.com/jfe/form/SV_ey3WVPcHDWwEeLI

HUMAN RESOURCE TEAM



Christy Johnson
CD HR Manager
and Appointing Authority



Brad Vance
HR Manager
Employee Relations



Jeremy Wilkerson
HR Manager
Position Management



Christine Steele
Recruitment/Retention
Unit Manager

HUMAN RESOURCE TEAM UPDATES

- As of **April 30, 2025**, CD has 1,979 full time team members on board
 - 1,411 of those are front line workers and supervisors
 - Currently CD has 55 budgeted vacancies
- CD is transitioning to in-office work by June 30, 2025
 - Some exceptions may include CD employees who mainly perform field work or performing call center functions

FISCAL TEAM



Arlene Damron
CD Fiscal Liaison



Hannah Siegel
Program Coordinator



Jennifer Schulte
Research Data Analyst



Scott Montgomery
Fiscal Notes Coordinator

FISCAL TEAM UPDATES

- The Fiscal Team is closing out the Fiscal year of 2025 and will be reviewing expenditures to help assess with projections for the upcoming Fiscal Year 2026.
- Our Team will be going out to the Field Offices to offer support and training on fiscal processes as needed and on an on-going basis. We like to work with new staff to help make transitions smooth.
- The Team will be setting up tracking documents for staff to help monitor expenditures for their individual office locations.
- As a team, we will be spending time to plan for the new fiscal year as it gets started to best utilize and track our appropriations.
- We are continuing our work on New Decision Items for FY27

SAFETY UNIT



Marcia Hazelhorst
Deputy Director





OUT OF HOME INVESTIGATIONS UNIT

(OHI)

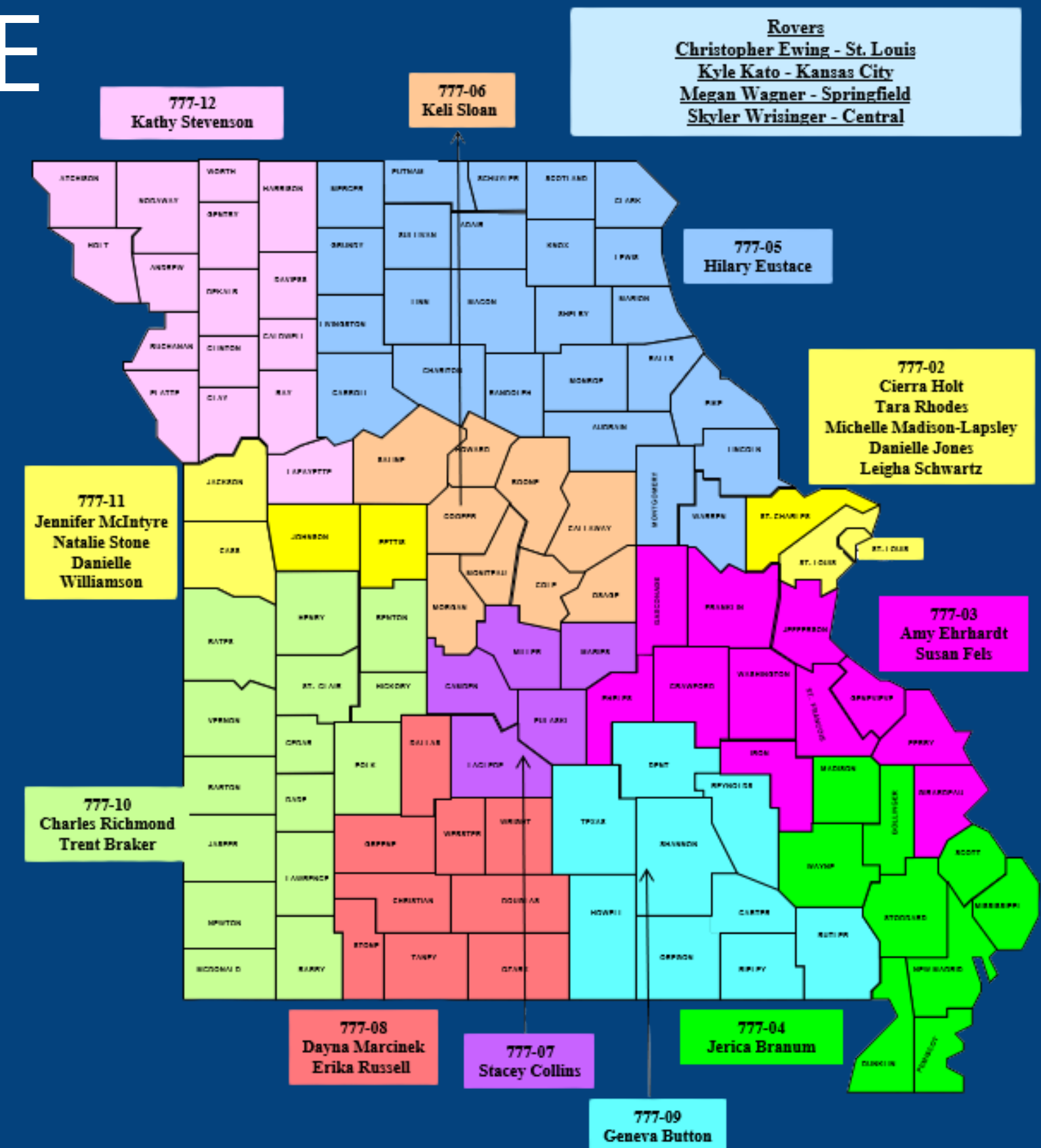
SAFETY

HISTORY OF THE OHI UNIT

- OHI Unit was formed in 1994
- Children's Division recognized that facility and foster home investigations were unique and different from family investigations
- OHI is operated under the same statutory authority as family investigations RSMo 210
- OHI unit operates within the same overall agency policy governing child abuse/neglect investigations, but in addition the OHI Unit has a separate policy manual specific to OHI
- OHI unit covers non-traditional areas whereas the local offices cover circuits. OHI areas span across multiple circuits and counties

OHI UNIT STRUCTURE

- OHI unit is out of Children's Division Central Office in Jefferson City.
- Unit Manager – Ryan Harris
- 4 OHI Field Supervisors
 - Dana Martignoni – Southern, MO
 - Amanda Miller – Northeast, Central, South Central, and Metro East.
 - Emily Buckallew – Kansas City, part of the Southwest, and Northwest
 - Tammy Vega – St. Louis
 - 24 out based investigators
 - 2 LASAs based in New Madrid

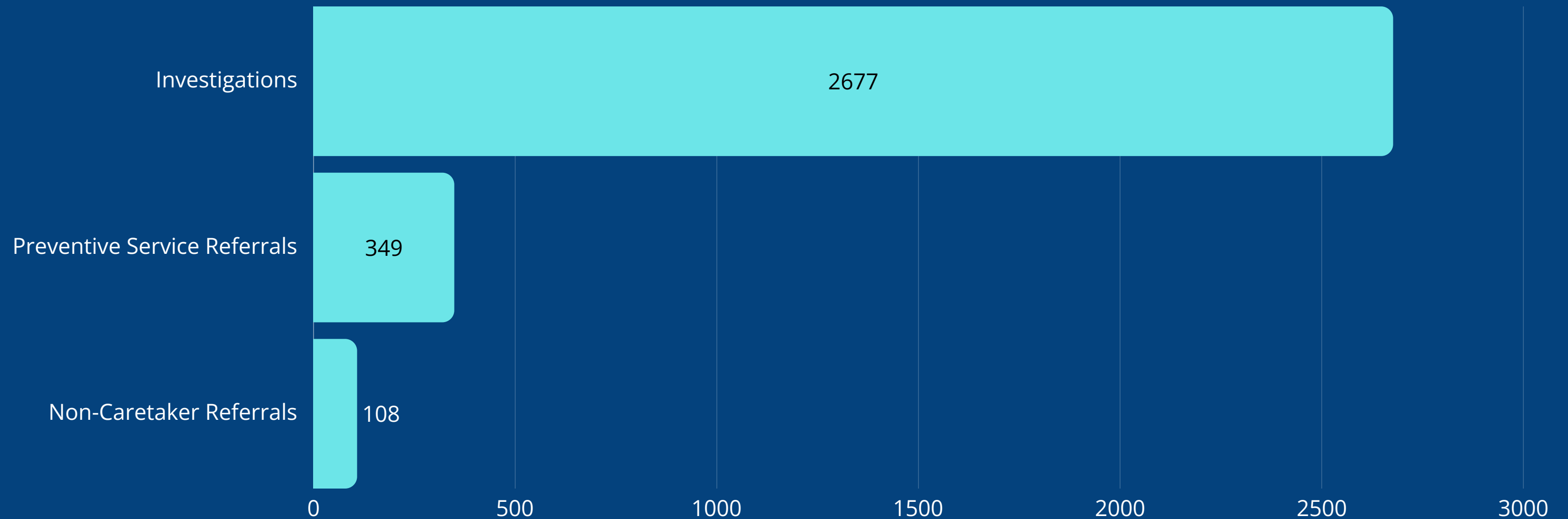


TYPES OF OHI REPORTS

- When the alleged perpetrator's relationship to the victim child is a professional relationship, the report is routed to the OHI Unit from CANHU
- OHI responds to 4 major categories of investigations:
 - Residential
 - Daycare
 - Schools
 - Foster Homes
- Other types of out of home investigations:
 - Transportation Driver
 - Coaches
 - Medical Providers
 - Staff at youth and recreational programs, etc.

2024 OHI DATA

Between January 1, 2024 and December 31, 2024 the OHI unit investigated 3,146 incidents of abuse and neglect.



ADMINISTRATION AND PREVENTION

Includes: In Home Services, Residential Licensing, Human Trafficking, Constituent Services, FACES



Christina Barnett
Designated Principal Assistant



Kassy Baumgartner
FACES Unit Manager



Lauren Hall
Prevention



Molly Eckman
Policy Coordinator



Mason Blair
Constituent Services



Rachel Davis
Sex Trafficking Prevention



Jennifer Richter
Residential
Licensing and BSU

PERMANENCY & FOSTER CARE LICENSING



Kate Watson
Deputy Director



Heather Ford
Foster Care Programs



Marcia Wetzel
FCCM Contract Oversight



Jill Pingel
HIS Unit Manager



Melissa Kenny
HIS Unit Manager



Lauren Masterson
Permanency



Lauren Masterson
Permanency



Dawn Rector
Residential Services

FIELD OPERATIONS



Pam Alston
Assistant Director



Shawn Boyd
Training and Professional
Development Manager



Julie Starr
QAPI



Annie Wilson
Training and
Professional
Development

Field Administration



Jennifer Chism
Northeast Director



Jana Wyman
St. Louis Director



Shasta Miller
Southeast Director



Chris Kimsey
Northwest Director



Brian West
Kansas City Director



Lisa Crawford
Southwest Director

STRUCTURE - FIELD OPERATIONS

Northwest Regional Director

Chris Kimsey

St. Joseph State Office Building
525 Jules #127
St. Joseph, MO 64501
Phone: (816) 387-2010

Christopher.R.Kimsey@dss.mo.gov

Kansas City Regional Director

Brian West

Kansas City State Office Building
615 East 13th St.
Kansas City, MO 64106
Phone: (816) 889-2364

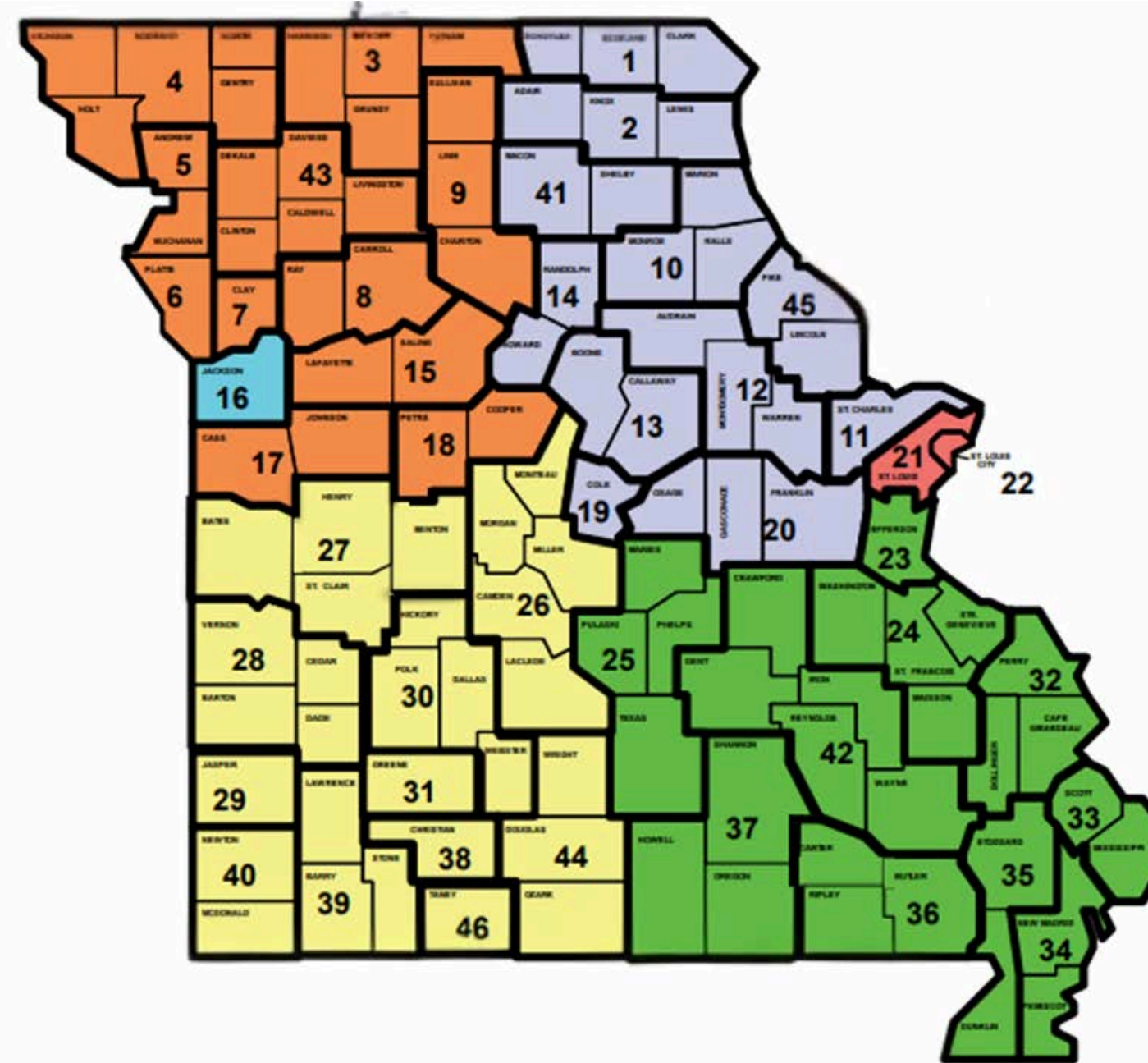
Brian.M.West@dss.mo.gov

Southwest Regional Director

Lisa Crawford

Greene County Office
149 Park Central Square, Suite 538
Springfield, MO 65806
Phone: (417) 895-7855

Lisa.Crawford@dss.mo.gov



Northeast Regional Director

Jennifer Chism

Audrain County Office
4690 S. Clark Street
Mexico, MO 65265
Phone: (573) 253-8230

Jennifer.Chism@dss.mo.gov

St. Louis Regional Director

Jana Wyman

St. Louis, County Office
9900 Page Avenue
St. Louis, MO 63132
Phone: (573) 536-8612

Jana.Wyman@dss.mo.gov

Southeast Regional Director

Shasta Miller

Texas County Office
16798 Oak Hill Drive, Suite 600
Houston, MO 65483
Phone: (417) 967-5105

Shasta.Miller@dss.mo.gov

TRAINING

- Training is now under new leadership
 - Pam Alston, Assistant CD Director
 - Shawn Boyd, Assistant Deputy Director
 - Annie Wilson, Training Unit Manager
 - Training Unit consists of 1 Supervisor, 12 Trainers, 2 Evaluation Staff and 2 Clerical
- We will be going back in person!
- Looking at regional placement of training with centralized curriculum
- Robust curriculum to help support the frontline with day-to-day practical application
- Supervisor Training
- Adding VR technology to help staff with skills in interviewing

FEDERAL CASE REVIEW - (PIP)

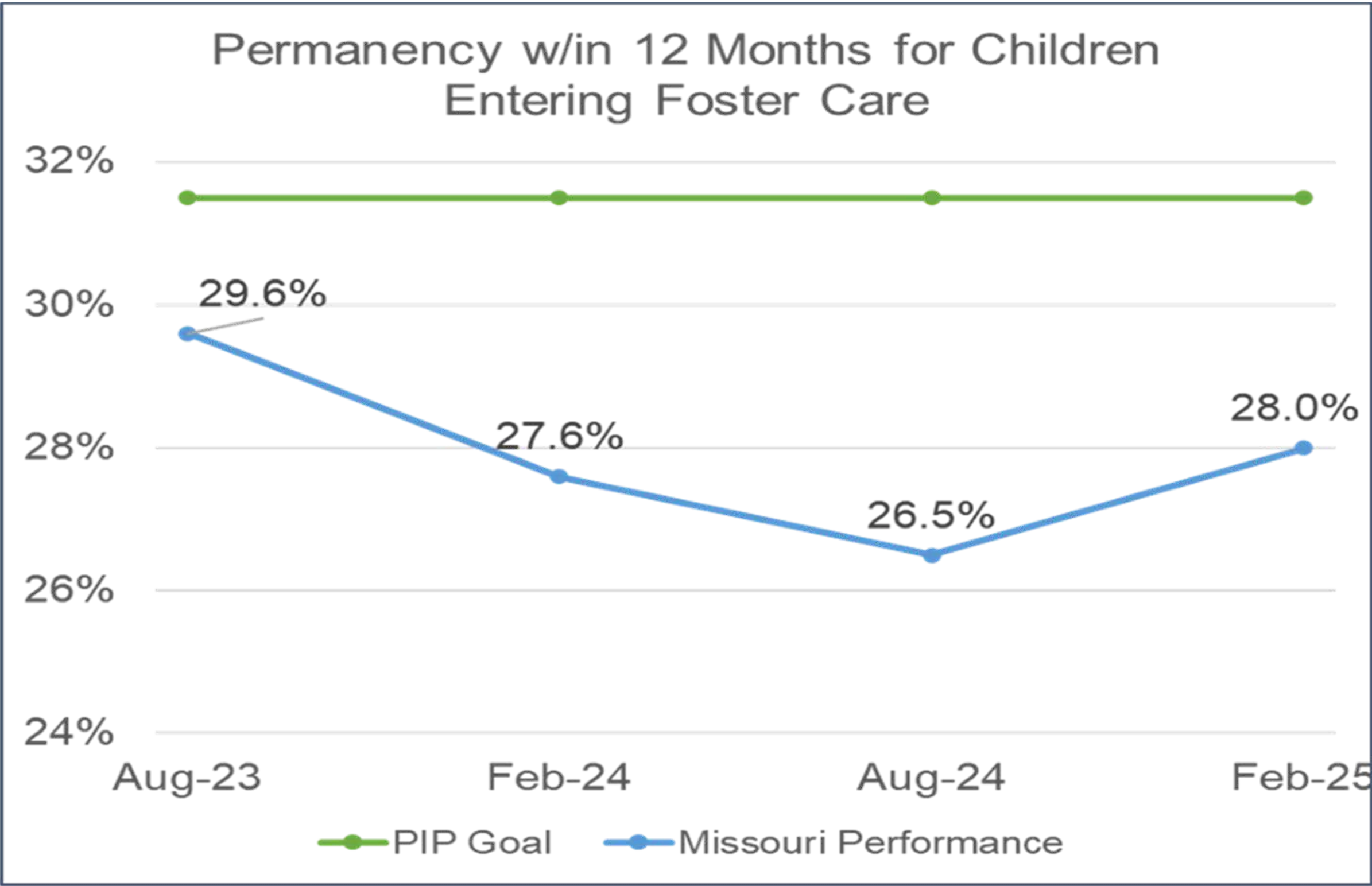
Child and Family Services Review (CFSR) is a periodic review, done in partnership between the state and the Children's Bureau, that examines Safety, Permanency, and Wellbeing of children and families served by the child welfare system.



More information about the Round 4 CFSR can be found here: <https://mydss.mo.gov/federal-child-family-services-review-cfsr>
Have more questions? Please contact JoDene Bogart, CFSR Coordinator, JoDene.Bogart@dss.mo.gov



PIP - TIMELY PERMANENCY



Information from the Statewide Data Indicators provided by the Children’s Bureau informs the chart above.

PIP - TIMELY PERMANENCY

Strategy 3.1 - Improve timeliness to permanency within 12 months within child welfare practice by identifying barriers to permanency through process mapping key federal, legal, and various state policy requirements and timeframes beginning with removal of the child from the home to 15 months post-custody.

- Implemented in Kansas City Region

Steps included:

- Data review and targeted case review of Children's Division and court timelines required by CD policy and state statute,
- Pre-meeting phone calls with Children's Division, OSCA, FCCM partners, and court/JO partners and legal representatives to review the data,
- 2-day Mapping Process meeting designed to discover barriers/root cause,
- Workgroup designations to further strategy development and develop implementation plans

GENERAL DATA OVERVIEW

Children's Division published data can be found on the Department of Social Services webpage. Follow this link to find information about Child Abuse/Neglect, Prevention and Foster Care Services, as well as annual federal reporting. <https://dss.mo.gov/re/>

Annual Reports

- **Child Abuse and Neglect Annual Report**
- **Child & Family Services Plans**
- **Children's Division Annual Report**

Monthly Reports

- **Children's Division Management Report**

Don't see what you are looking for or have questions?

Contact Julie Starr, Julie.L.Starr@dss.mo.gov

FIELD OPERATIONS

You can make a request for information at the link below



[https://dssmo.govqa.us/WEBAPP/_rs/\(S\(ja02xur0fg2uqynsgvqdodeh\)\)/SupportHome.aspx?sSessionID=1095086GEGKTKFBZOSSPHUJKZWZJSYYNADUDJCPT](https://dssmo.govqa.us/WEBAPP/_rs/(S(ja02xur0fg2uqynsgvqdodeh))/SupportHome.aspx?sSessionID=1095086GEGKTKFBZOSSPHUJKZWZJSYYNADUDJCPT)

KANSAS CITY REGION



Brian West

Kansas City Regional Director



Tia Hogan

Program Administrator
CAN Response



Sarah Thomas

Program Administrator
FCS and AC



Nathan Porter
Field Support
Manager

KANSAS CITY REGION

- Safety and Timely Resolution
- Risk Reduction and Permanency
- Staff Support and Resource Support
- Contracted Services
 - FCCM-Crittenton, KCCC (Cornerstones of Care and KVC)
 - Missouri Alliance Specialized Care and LifeSet
 - Resource Licensing-KVC



SAVE THE DATE

July 18 at 10:30 a.m.

Hope to see you there!

Click or Scan
to Register!



Our Mission



Empower Missourians to live safe, healthy, and productive lives.