

Aligning Forces for Quality

Prior Authorization Committee

June 18, 2009

George L. Oestreich, PharmD, MPA

Deputy Division Director, Clinical Services



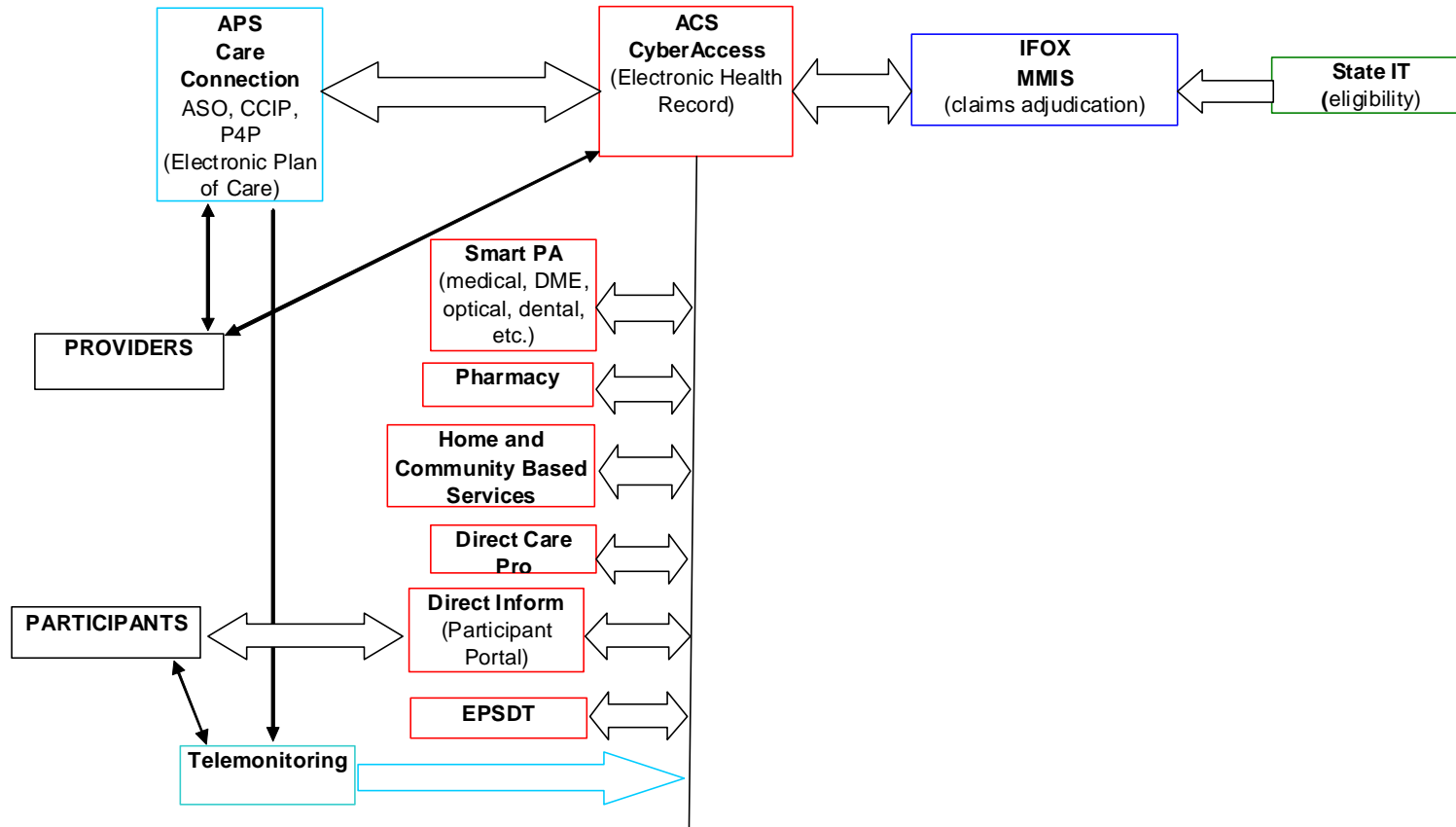
Current Tools for Clinical Use

- Smart PA
- Decision Support Tools
 - CyberFormance
 - Paid Claim Tool
- CyberAccess
- Care Connection

Current Tools for Patient/Participant Use

- Direct Inform (A PHR [patient/personnel health record])
- MORx Compare (web tool)

Today's HIT, How it Fits Together



CyberAccess™

● Current Features

- Patient demographics
- Electronic Health Record
 - Record of all participant prescriptions
 - All procedures codes
 - All diagnosis codes
- E prescribing
- Preferred Drug List support
 - Access to preferred medication list
 - Precertification of medications via clinical algorithms
 - Implementation of step therapy
 - Prior authorization of medications)
- Medication possession ratio
- DirectCare Pro

CyberAccess™ (current, con't)

- General Medical Uses
 - Integrated call center support
 - Availability of laboratory values (and references)
 - Precertification of imaging
 - Precertification of durable medical equipment (DME)

CyberAccess™ (con't, future)

- Near Term Additions (SF 2009)
 - Determination of level of care and precertification of home and community based services
 - Electronic capture and storage of EPSDT forms
 - Precertification of optical (as covered)
 - Patient level editing
 - Electronic medical record lite (EMR)
 - Patient case management tools
 - Risk assessment
 - Stratification
 - Gaps in therapy
 - Episodes of care
 - Concurrent case management
 - Eligibility determination reporting
 - Incorporation of diabetic patient care management information

CyberAccess™ (con't, 2nd quarter 2009 and beyond)

- Later term additions
 - Interoperability with other services (EMRs, hospital records)
 - Precertification of dental
 - “Plug-ins” for EMR
 - Scheduling
 - Billing
 - Integrated billing for service
 - Integration of discharge summary and medication reconciliation
 - Integration of home monitoring data/information
 - Integration of immunization registry

Direct Inform™

- Access to program provided benefits
 - Program integrity notification of services provides (EOB equivalent)
- Notification of wellness lapses
- Web portal participant health information

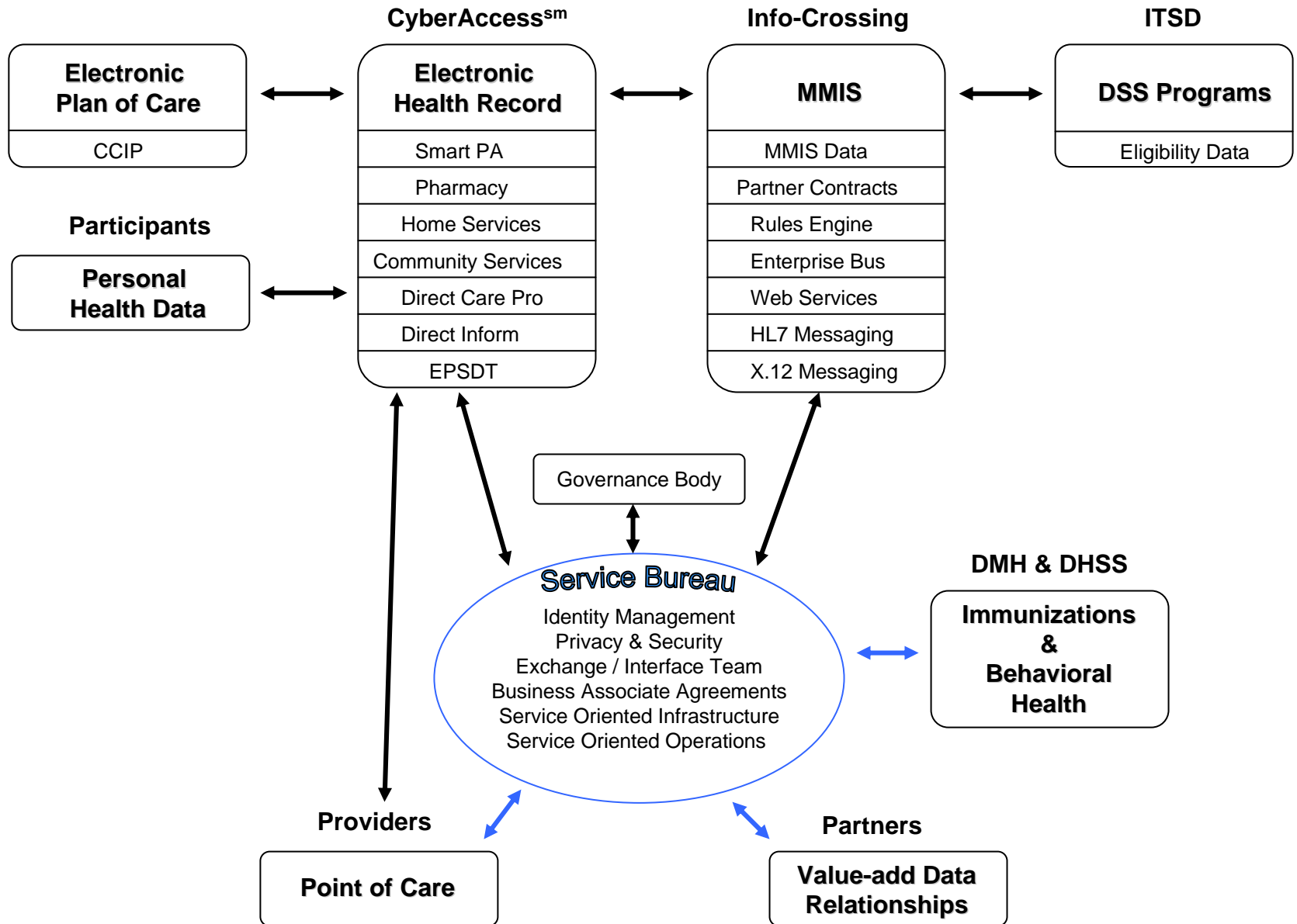
Future Addition Across User Interfaces

- Direct notification to participants and providers of gaps of care
- Integration of drill down to best practice lapse and gaps of care
- Integration of patient empowerment information such as asthma action plans, diabetic management plans of care
- Wellness initiatives such as anti-obesity programs
- Smoking cessation programs and general wellness empowerment tools

Who Do We Serve?

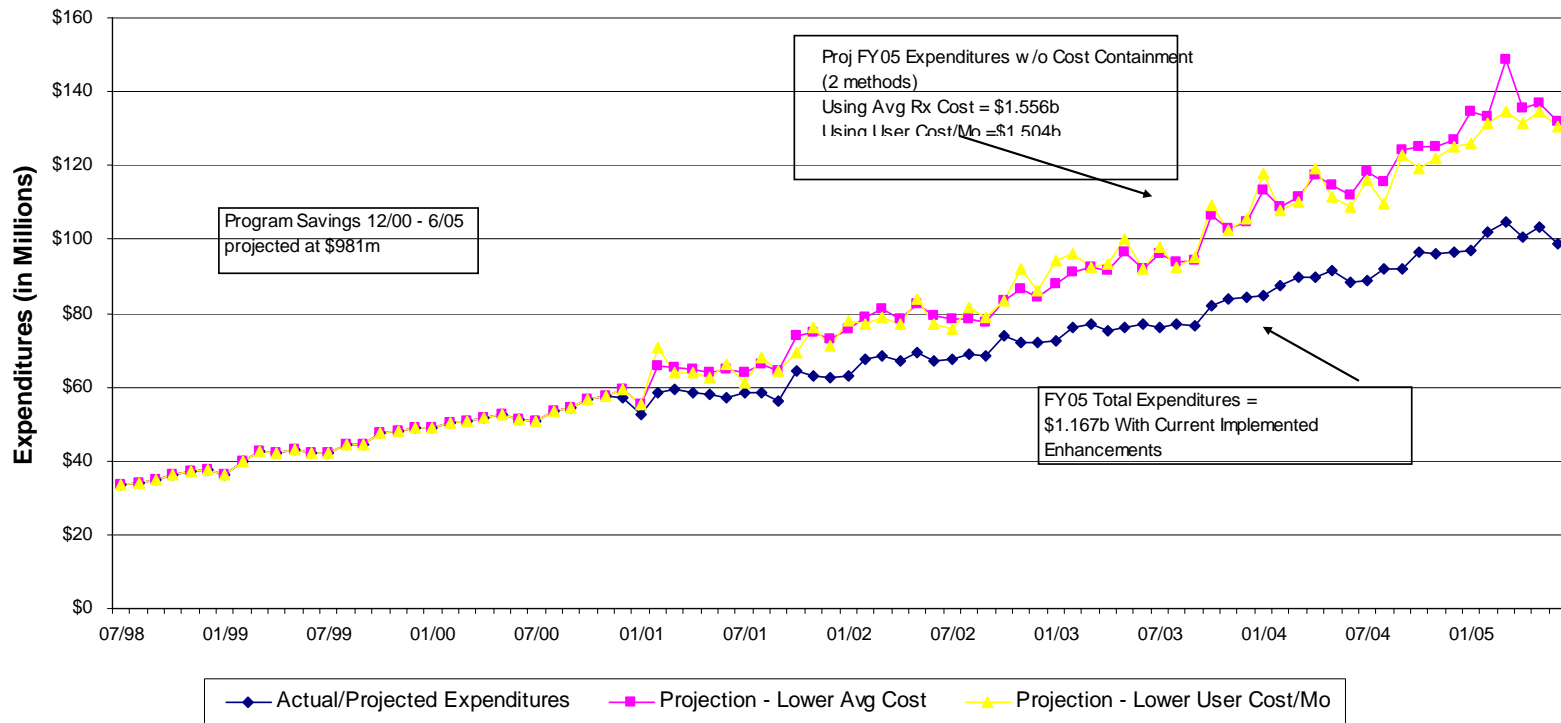
- All state partners
 - DSS
 - DHSS
 - DMH
 - DESE
 - Corrections
 - What are our roles with private sector partners
- Collaborating on HIT strategic plan
- 
- A diagram showing three blue circular bullet points labeled 'DSS', 'DHSS', and 'DMH' on the left. Three black arrows originate from the right side of each of these three bullet points and converge towards a central text block on the right that reads 'Collaborating on HIT strategic plan'.

Missouri – Statewide Health Information Exchange



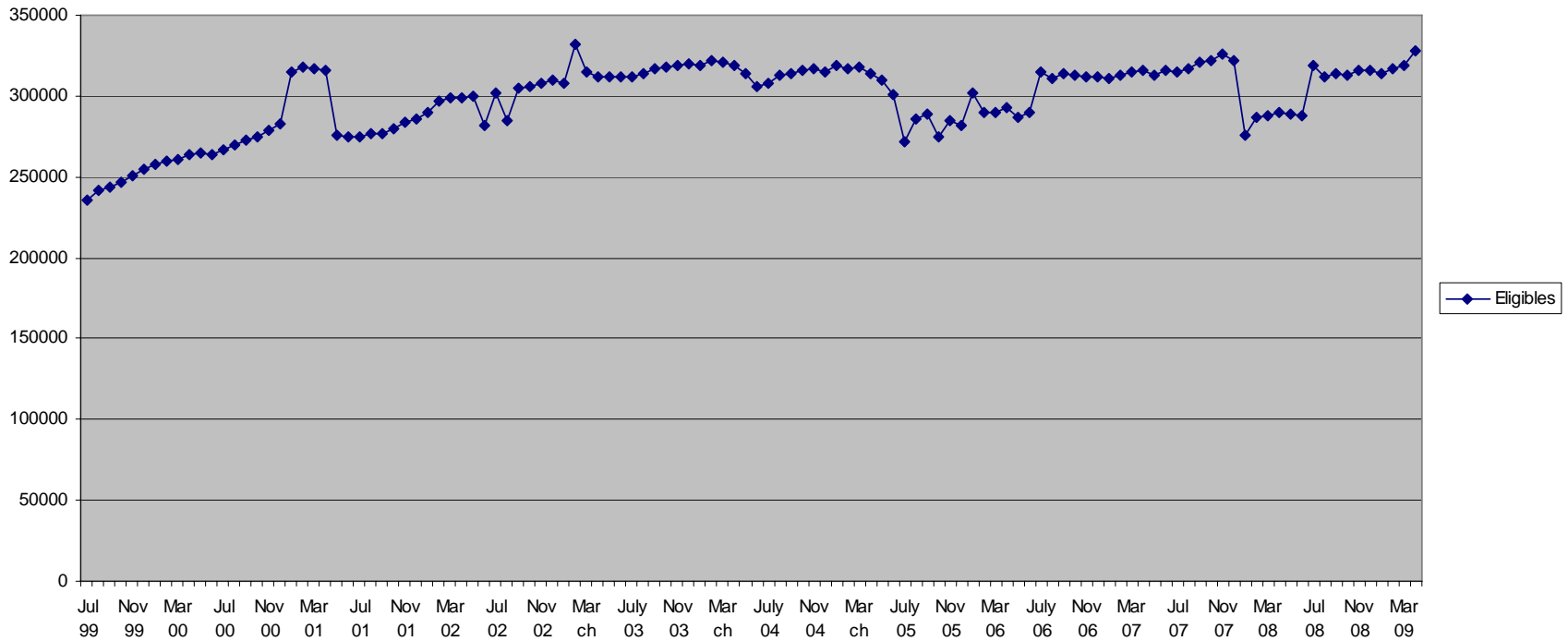
Targeting Program Performance

Total Monthly Pharmacy Cost



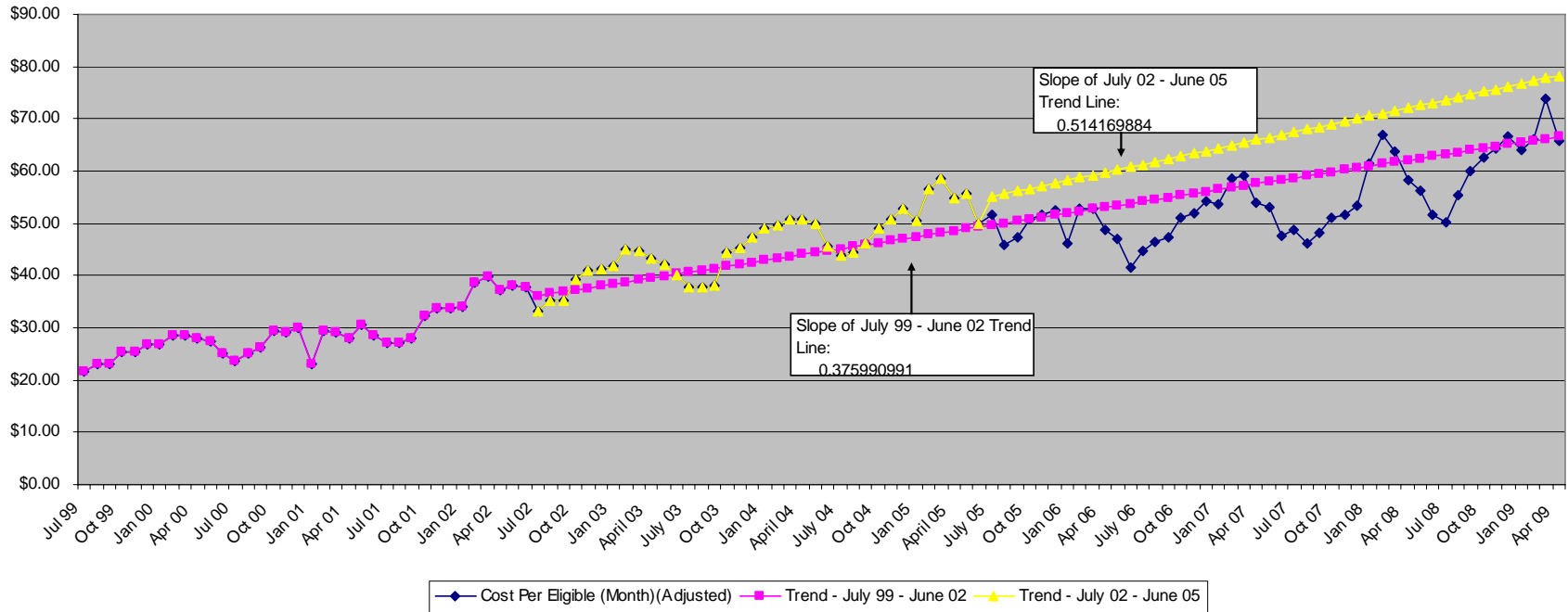
And the Impact of Eligibility

Eligibles- Other*



Future Targeting of Program Performance

Other* PMPM
July 1999 - April 2009



Off Trend Savings All Interventions

Savings between Actual and the Trend Line July 99 - June 02	
July 2005 - April 2009	\$159,035,969
FY06 Savings	\$9,309,406
FY07 Savings	\$42,891,427
FY08 Savings	\$52,439,575
FY09 Savings	\$54,395,561
Savings between Actual and the Trend Line July 02 - June 05	
July 2005 - April 2009	\$279,832,396.52
FY06 Savings	\$30,747,805
FY07 Savings	\$72,547,189
FY08 Savings	\$87,090,712
FY09 Savings	\$89,446,690

Discussion

- Questions

Thank you

George.L.Oestreich@dss.mo.gov

573.751.6961