

# Pharmacy Program Update

## Prior Authorization Committee

June 17, 2010

**George L. Oestreich, Pharm.D., MPA**

Deputy Division Director, Clinical Services

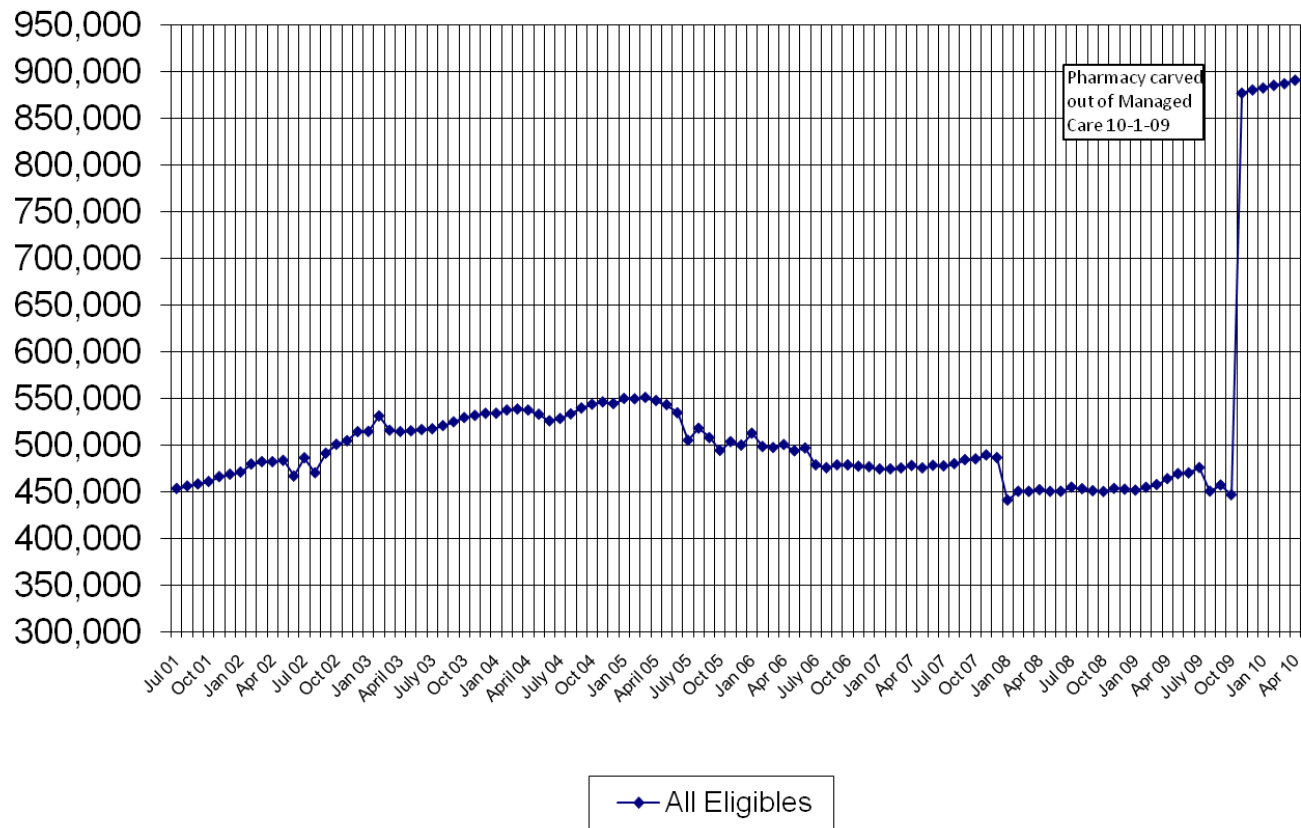
MO HealthNet Division



# All Participants

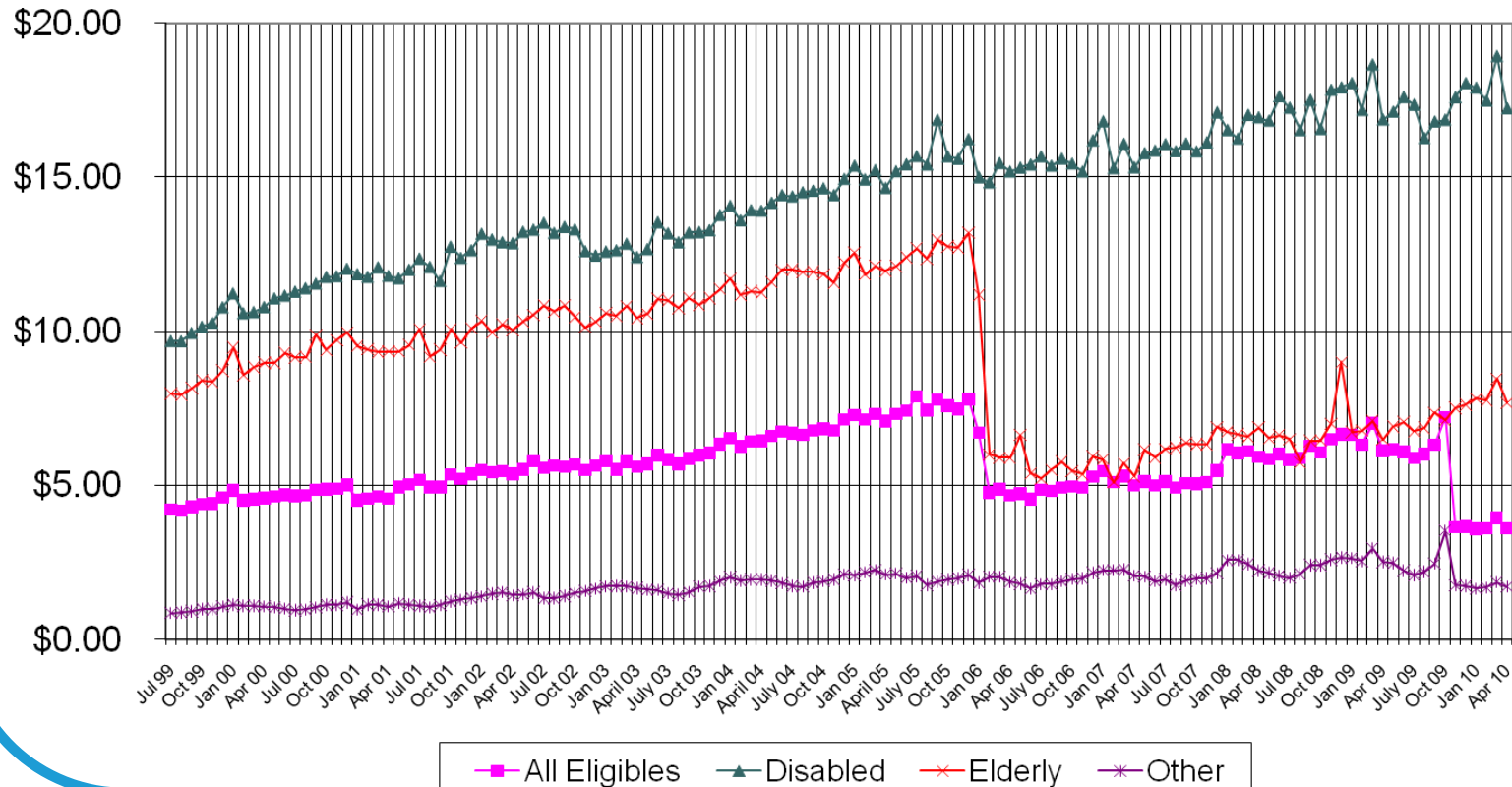
## Medicaid Eligibles With Duals

July 01 thru April 10



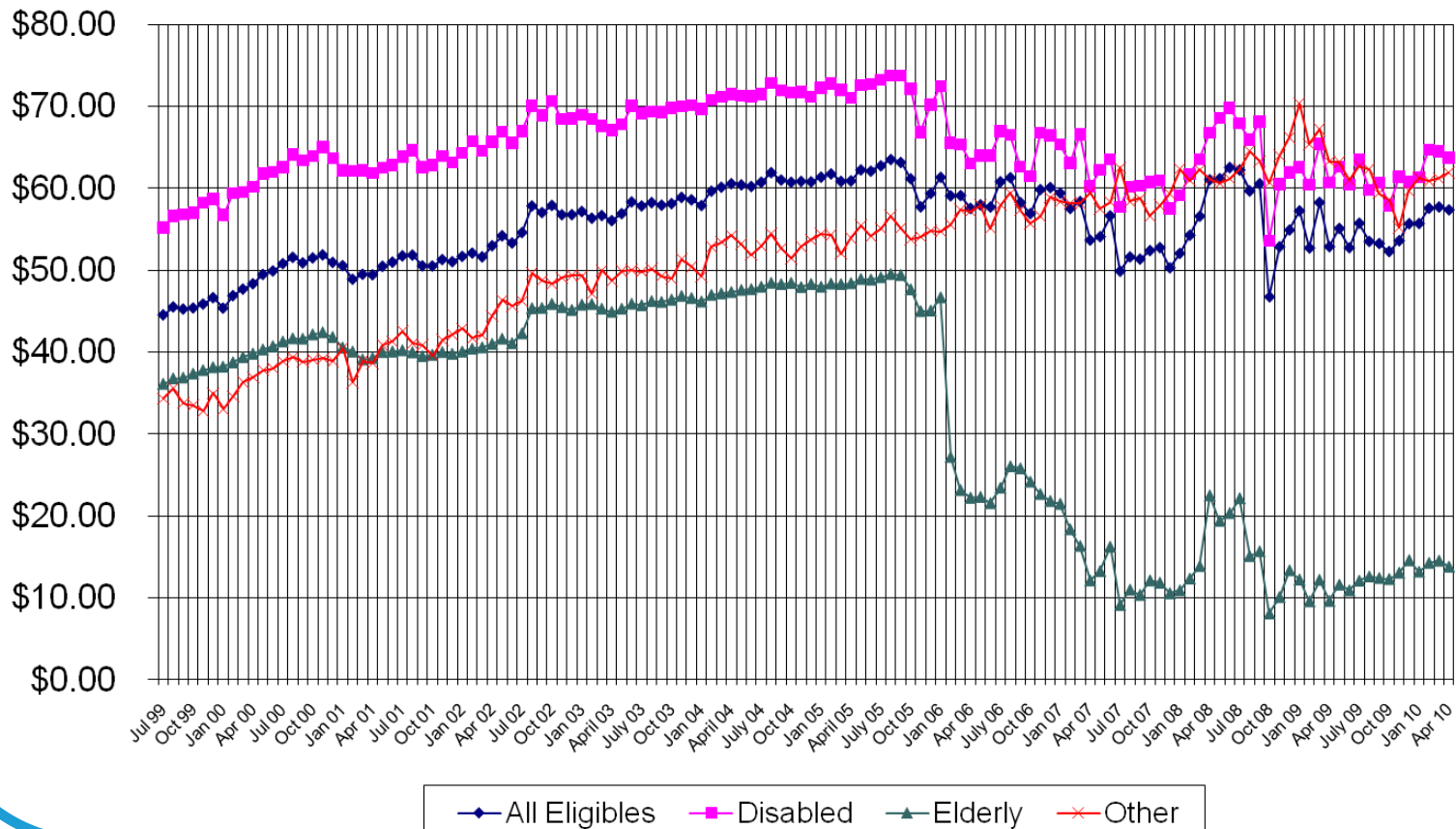
# Cost per Work Day

## Cost Per Eligible/Work Day Without Duals



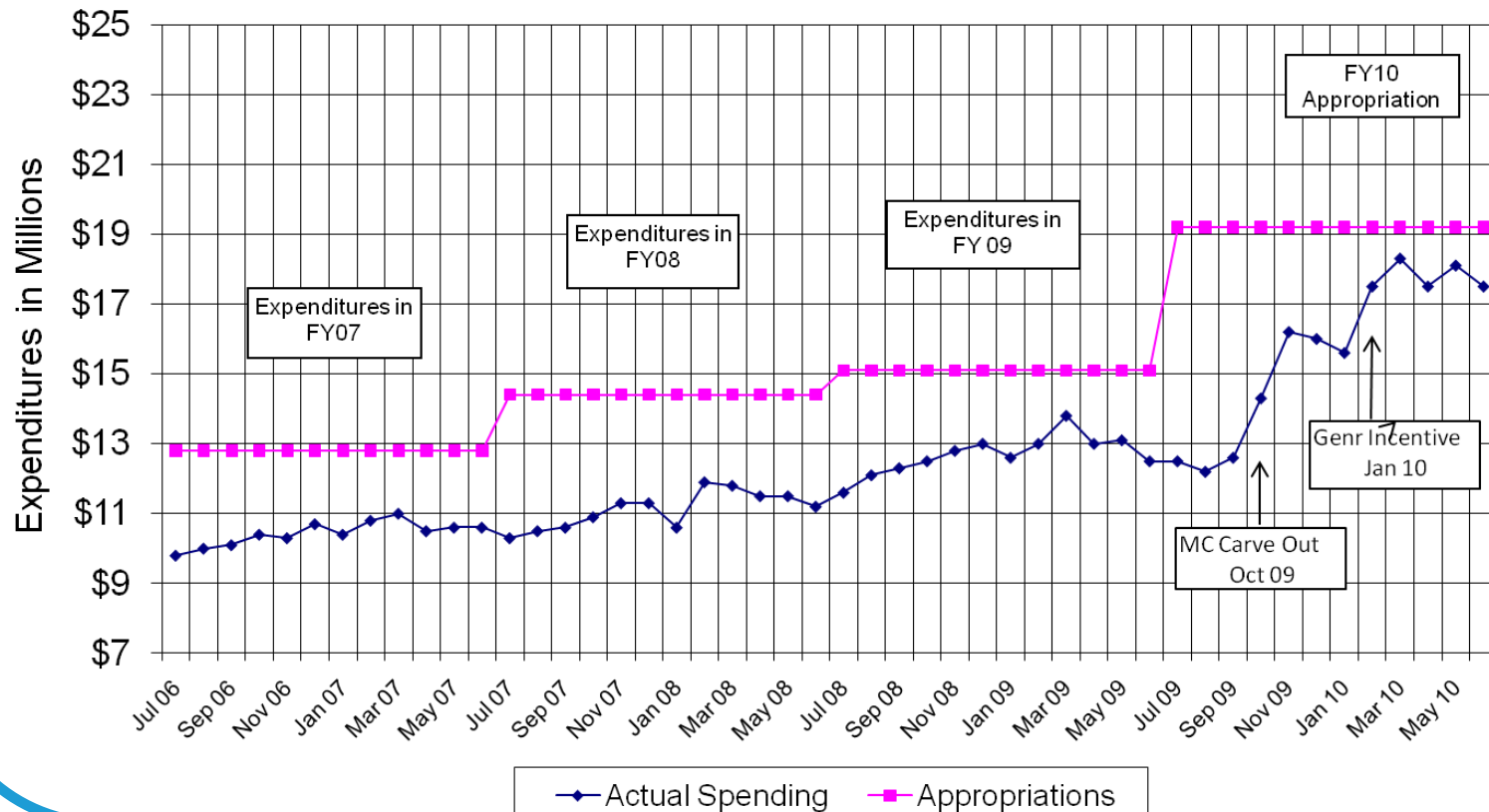
# Average Prescription Cost

## Average Prescription Cost



# Expenditures to Budget

**Pharmacy Cost Trends**  
Average Weekly Expenditures



# FY 10 MAC Savings

## TRADITIONAL MAC Savings & Specialty MAC Savings

<u>Implementation Date</u> <u>Traditional Mac</u>	<u>Annual Savings</u> <u>Traditional Mac</u>	<u>Implementation Date</u> <u>Specialty Drugs</u>	<u>Annual Savings</u> <u>Specialty Drugs</u>	
		4/26/2010	(\$410,332)	
4/15/2010	\$ 1,512,800.00	3/22/2010	(\$1,387,960)	
1/15/2010	\$ 13,617,216.00	10/15/2009	(\$420,261)	
7/20/2009	\$ 19,667,459.40	6/24/2009	\$ 5,089,542	
				\$37,668,464 FY10 Total

# April 2010 Facts

- Cost per participant/mn \$93.50
- Average prescription \$57.37
- Prescriptions per participant 1.6
- Prescriptions per month 1,247,893

# MCO Cost Differentials

## All Plans March 2010

Total Managed Care	Gross Pharmacy	
	Members	Cost
	421,933	\$12,335,890
<b>Total FFS Cost</b>		\$19,873,310.16
	Claims	
Enhanced Fees	\$4.72	283,627 (\$1,338,719)
Generic Fees	\$3.92	193,111 (\$756,995)
Protease Inhibitor Adjustment		\$ (57,436.17)
Specialty Drug Adjustment		\$(3,226,257.70)
Ptax - Enh Fee	\$8.57952	283,627 (\$2,433,384)
Ptax - Gen Incentive	\$7.12536	193,111 (\$1,375,985)
Rebate Adjustment		(\$3,973,429)
Net FFS Cost		\$6,711,104
<b>Net MC+ Cost</b>		<b>\$12,335,890</b>
<b>Net FFS Cost</b>		<b>\$6,711,104</b>
<b>Difference</b>		<b>\$5,624,787</b>



# Where is Missouri Most Vulnerable: Our Pediatric Participants

- **Antipsychotic (AP) Medication Trends\*:**  
Increased 28%
- **AP Use in the Very Young (< 5 years old):**  
Increased 39%
- **High Dose AP (beyond recommended guidelines):** Increased 18%

\*Comparing 2004 to 2007

# Where is Missouri Most Vulnerable: Our Pediatric Participants (continued)

- **Multiple AP use:**

2,379 children were prescribed two or more antipsychotics

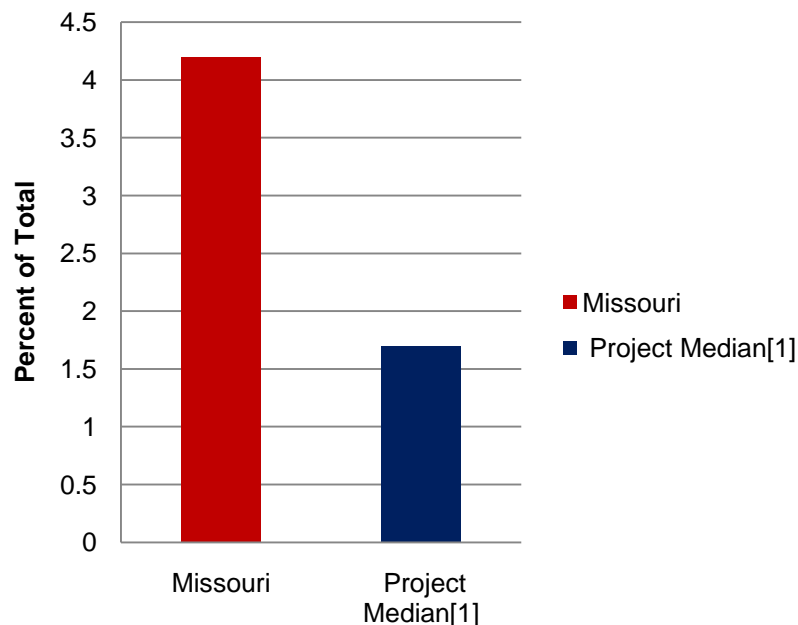
- *No clinical guideline to support this practice.*

- **Multiple Mental Health Drugs (MHD):** ~5,000 children were prescribed four or more mental health drugs.

# How does Missouri Look: Comparison to 15 Other States

## Use of Antipsychotic Under 19 Years Old

### Use of an AP



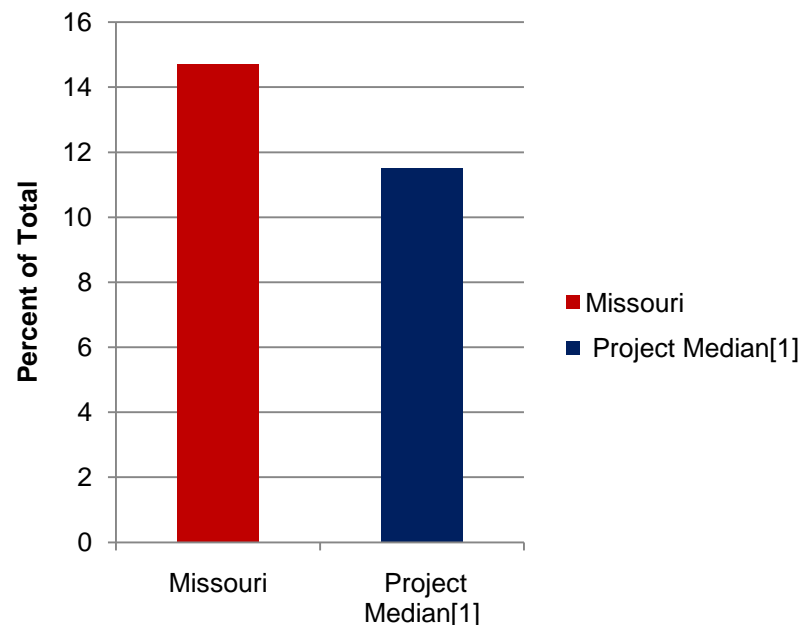
Median States

Alabama, California, Colorado, Illinois\*, Indiana, Maine\*, Massachusetts\*, Missouri, New Hampshire\*, New York, Oklahoma, Oregon\*, Pennsylvania\*, Tennessee\*, Texas\*, and Washington State\*.

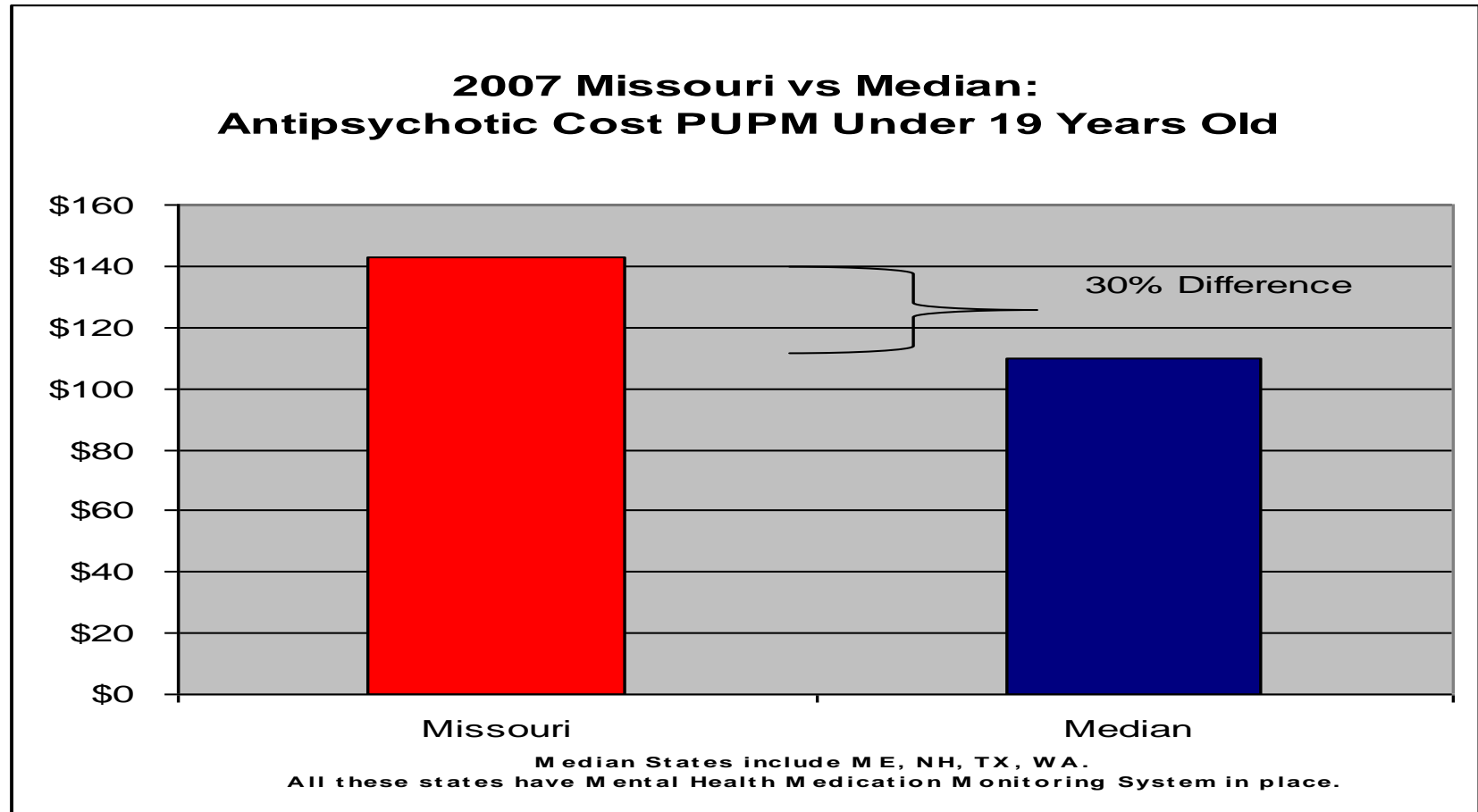
\*Have Mental Health Drug Monitoring in Place

## Polypharmacy Under 19 Years Old

### Polypharmacy ( $\geq 4$ MHD)

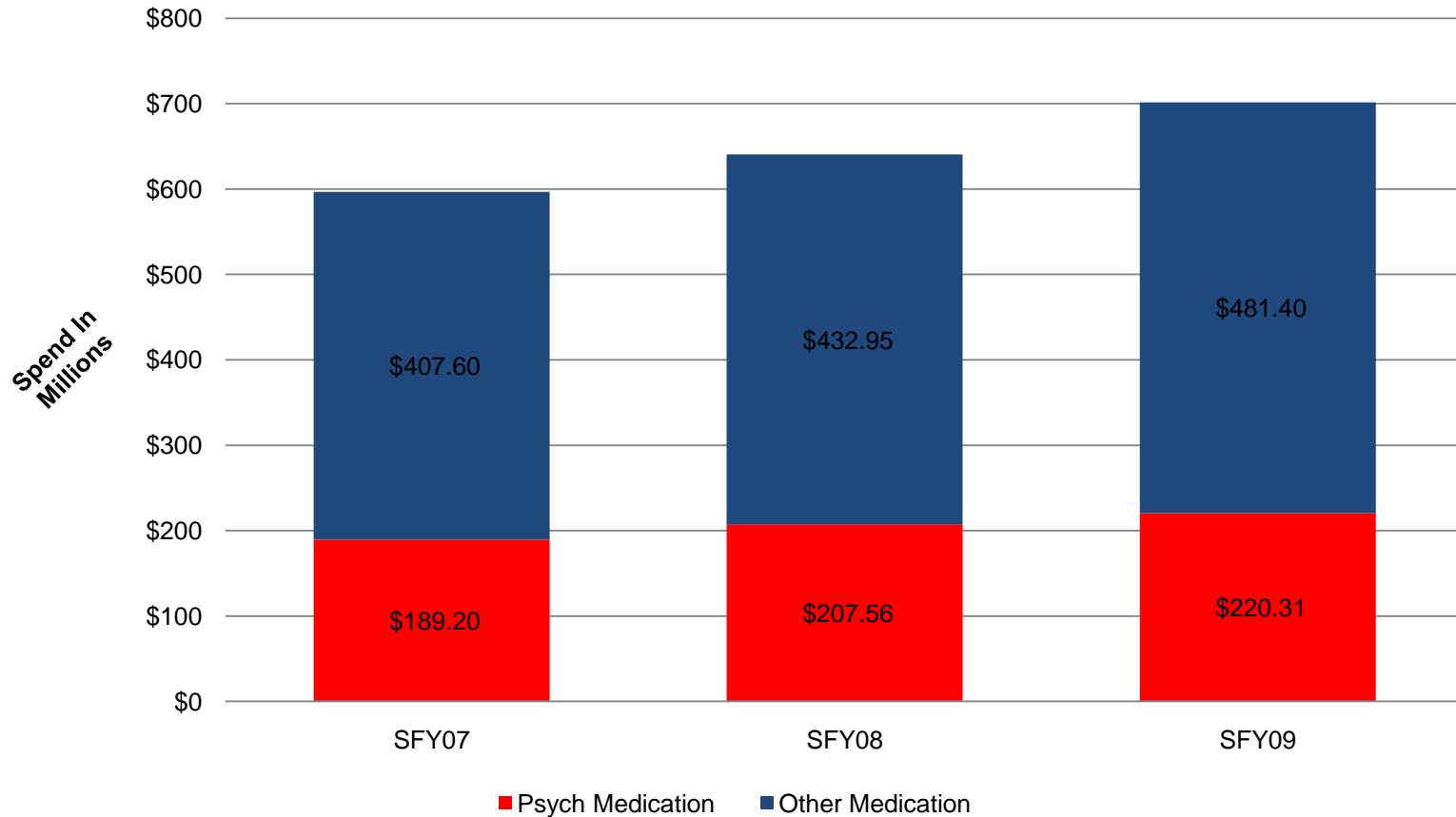


# How does Missouri Look: 2007 Cost Comparison with 5 Other States



# MO Health Net Pharmacy Spend: > 30% on Antipsychotic and Psychotropic Drugs

Psych Drug Spend to Total Drug Spend



# Why Clinical Monitoring Tools Work in Missouri

- MO HealthNet Utilizes:
  - Published guidelines established by experts
  - Physicians, Pharmacist and other Health Care Providers to Participate in Decisions through:
    - Prior Authorization Committee
    - Drug Utilization Review Board
  - An user friendly call center
    - When physicians need rapid approval of medication

# Impact: Implementing the Mental Health Drug Monitoring Program

- **Ensure Patient Safety**
  - Through proven methods
    - Utilization of current published medical guidelines
    - Experts from Missouri have input into process
    - Advocacy Groups will have a voice in the process
    - Existing MO HealthNet Cyber Tools will be used
    - Participant will be allowed to continue current medication use without interruption

# Discussion

- Questions

Thank you

[George.L.Oestreich@dss.mo.gov](mailto:George.L.Oestreich@dss.mo.gov)

573.751.6961