



# CyberAccess Logging Information

From 1/1/2004 to 2/28/2011

Executed by at 3/8/2011 1:10:05 PM

Includes Data for Missouri

Month	User Logged In	Patient History Checked	Medical Rules Checked	Medical Help Tickets	Medical Pre-Certification Submitted	Lab Data Checked	Clinical Traits Checked	Drug Rules Checked	Drug Help Tickets
March 2006	2	459	0	0	0	0	0	35	1
April 2006	896	1,726	0	0	0	0	0	185	31
May 2006	944	1,320	0	0	0	0	0	165	45
June 2006	755	1,016	0	0	0	0	0	86	29
July 2006	1,283	6,185	29	10	0	0	0	162	31
August 2006	2,001	4,226	179	21	0	0	0	326	60
September 2006	1,787	3,434	210	59	0	0	0	186	59
October 2006	1,938	3,614	186	46	0	0	0	236	69
November 2006	1,816	3,671	142	52	0	0	0	217	88
December 2006	1,641	2,484	91	19	0	0	0	210	69
January 2007	2,455	4,497	186	48	0	0	0	309	80
February 2007	2,711	4,514	144	42	3	0	0	255	90
March 2007	3,586	6,770	139	47	6	0	0	337	125
April 2007	3,876	7,107	199	60	10	0	0	380	137
May 2007	5,724	8,716	1,045	308	25	0	0	494	176
June 2007	6,029	8,489	1,400	397	203	0	0	412	136
July 2007	7,864	10,750	1,891	519	388	0	0	512	174
August 2007	10,267	15,371	2,519	574	706	0	0	733	259
September 2007	10,252	17,229	2,528	548	911	0	0	691	280
October 2007	12,422	18,895	2,766	650	1,242	0	0	725	320
November 2007	11,485	17,140	2,810	570	1,368	0	0	726	321
December 2007	10,169	16,171	2,477	445	1,303	0	0	586	256
January 2008	14,234	23,532	4,148	969	2,177	0	0	704	309
February 2008	14,565	24,887	5,248	633	2,516	0	0	682	263

WARNING: This report is the private property of the State. Secure handling and disposal rules must be applied to this document at all times. You may not make unauthorized copies of this document or distribute the data contained herein to any other parties without the express, written permission of the State. Your failure to handle this document properly may result in severe civil and criminal penalties.



# CyberAccess Logging Information

From 1/1/2004 to 2/28/2011

Executed by at 3/8/2011 1:10:05 PM

Includes Data for Missouri

E-Prescribed New Prescription	Faxed Prescription	Printed Prescription	User Logged in from APS	User Crossed to APS	Transfer to RBM	Activities / User
0	0	6	0	0	0	250.50
0	0	48	0	0	0	2.22
0	0	16	0	0	0	1.64
0	3	5	0	0	0	1.51
0	2	7	0	0	0	5.01
0	11	20	0	0	0	2.42
0	1	14	0	0	0	2.22
0	31	19	0	0	0	2.17
0	16	24	0	0	0	2.32
0	11	32	0	0	0	1.78
0	21	44	0	0	0	2.11
0	52	20	0	0	0	1.89
0	42	31	0	0	0	2.09
0	81	20	0	0	0	2.06
0	68	45	0	0	0	1.90
0	60	35	0	0	0	1.85
0	92	30	0	0	0	1.83
0	131	28	0	0	0	1.98
0	120	32	0	0	0	2.18
0	102	38	0	0	0	1.99
0	98	37	0	0	0	2.01
0	61	22	0	0	0	2.10
0	94	24	0	0	0	2.25
0	117	27	0	0	0	2.36

WARNING: This report is the private property of the State. Secure handling and disposal rules must be applied to this document at all times. You may not make unauthorized copies of this document or distribute the data contained herein to any other parties without the express, written permission of the State. Your failure to handle this document properly may result in severe civil and criminal penalties.



# CyberAccess Logging Information

From 1/1/2004 to 2/28/2011

Executed by at 3/8/2011 1:10:05 PM

Includes Data for Missouri

Month	User Logged In	Patient History Checked	Medical Rules Checked	Medical Help Tickets	Medical Pre-Certification Submitted	Lab Data Checked	Clinical Traits Checked	Drug Rules Checked	Drug Help Tickets
March 2008	14,413	23,407	4,982	631	2,201	0	0	724	293
April 2008	16,569	27,335	5,188	693	2,228	0	0	958	377
May 2008	15,711	25,810	5,075	585	2,004	0	0	786	333
June 2008	15,410	25,757	5,127	652	1,872	0	0	737	289
July 2008	18,495	29,567	5,437	565	1,836	50	0	782	310
August 2008	19,417	32,323	9,188	571	2,276	42	0	930	324
September 2008	23,999	36,932	9,926	655	2,773	35	0	943	402
October 2008	27,160	41,386	11,719	719	3,232	49	0	920	370
November 2008	22,843	35,215	9,578	578	2,774	27	0	763	329
December 2008	26,554	41,779	12,502	607	3,499	22	0	721	314
January 2009	29,445	46,793	13,655	679	4,271	25	0	1,069	463
February 2009	36,375	54,567	16,174	702	5,155	18	0	981	441
March 2009	50,739	76,870	18,033	755	5,655	20	0	976	417
April 2009	38,377	66,072	20,680	808	6,051	1	0	950	416
May 2009	30,595	49,576	14,981	660	4,349	18	0	827	350
June 2009	33,449	48,614	44,539	857	8,370	26	0	815	315
July 2009	41,348	77,142	76,102	877	13,226	16	0	799	341
August 2009	40,373	66,950	80,535	836	17,268	8	101	771	350
September 2009	43,966	75,858	78,486	852	19,488	132	168	900	354
October 2009	52,320	104,290	81,287	825	20,406	3	180	1,111	449
November 2009	48,711	98,128	69,837	748	17,649	23	129	1,005	472
December 2009	50,277	97,231	67,061	760	17,248	34	143	1,102	511
January 2010	48,959	88,531	59,584	773	14,350	31	155	983	499
February 2010	53,497	98,340	63,684	790	14,142	7	148	1,112	551

WARNING: This report is the private property of the State. Secure handling and disposal rules must be applied to this document at all times. You may not make unauthorized copies of this document or distribute the data contained herein to any other parties without the express, written permission of the State. Your failure to handle this document properly may result in severe civil and criminal penalties.



# CyberAccess Logging Information

From 1/1/2004 to 2/28/2011

Executed by at 3/8/2011 1:10:05 PM

Includes Data for Missouri

E-Prescribed New Prescription	Faxed Prescription	Printed Prescription	User Logged in from APS	User Crossed to APS	Transfer to RBM	Activities / User
0	114	24	0	0	0	2.25
0	131	22	0	0	0	2.23
0	130	38	0	0	0	2.21
0	123	30	0	0	0	2.24
0	81	25	0	0	0	2.09
0	197	25	0	0	0	2.36
0	99	23	0	0	0	2.16
0	121	26	0	0	0	2.16
0	136	34	0	0	0	2.16
0	95	23	0	0	0	2.24
0	130	29	0	0	0	2.28
0	115	39	0	0	0	2.15
0	134	33	0	206	0	2.03
1	120	22	0	189	0	2.48
10	93	23	5,255	161	0	2.49
17	89	27	5,416	226	0	3.27
15	90	18	3,062	172	0	4.16
1	74	14	3,413	182	0	4.23
2	130	23	3,203	167	0	4.09
0	112	23	2,845	203	0	4.05
0	125	25	2,655	171	0	3.92
17	118	19	3,191	156	0	3.73
6	102	16	2,396	136	0	3.43
1	97	31	2,630	174	0	3.40

WARNING: This report is the private property of the State. Secure handling and disposal rules must be applied to this document at all times. You may not make unauthorized copies of this document or distribute the data contained herein to any other parties without the express, written permission of the State. Your failure to handle this document properly may result in severe civil and criminal penalties.



# CyberAccess Logging Information

From 1/1/2004 to 2/28/2011

Executed by at 3/8/2011 1:10:05 PM

Includes Data for Missouri

Month	User Logged In	Patient History Checked	Medical Rules Checked	Medical Help Tickets	Medical Pre-Certification Submitted	Lab Data Checked	Clinical Traits Checked	Drug Rules Checked	Drug Help Tickets
March 2010	56,545	107,133	77,864	1,021	16,798	41	222	1,415	692
April 2010	53,989	93,941	69,374	885	14,834	43	2,264	1,195	527
May 2010	59,374	66,787	56,693	770	12,183	26	154	1,067	432
June 2010	71,719	53,577	57,950	876	12,145	38	141	1,066	466
July 2010	81,013	55,060	58,325	477	11,758	35	193	1,016	410
August 2010	99,808	56,629	69,748	219	13,186	38	142	1,229	502
September 2010	90,499	55,766	67,404	213	13,030	33	143	1,265	527
October 2010	94,737	59,666	67,871	202	13,254	34	147	1,335	543
November 2010	94,758	67,434	65,495	195	12,753	45	144	1,364	655
December 2010	92,658	67,170	59,712	192	11,747	29	127	1,106	546
January 2011	94,373	69,442	60,547	230	12,063	21	169	1,291	678
February 2011	88,626	58,923	59,214	196	11,667	55	147	1,148	555
<b>All Time Total</b>	<b>1,932,124</b>	<b>2,410,433</b>	<b>1,601,828</b>	<b>28,750</b>	<b>362,380</b>	<b>1,042</b>	<b>5,215</b>	<b>45,876</b>	<b>19,390</b>

WARNING: This report is the private property of the State. Secure handling and disposal rules must be applied to this document at all times. You may not make unauthorized copies of this document or distribute the data contained herein to any other parties without the express, written permission of the State. Your failure to handle this document properly may result in severe civil and criminal penalties.



# CyberAccess Logging Information

From 1/1/2004 to 2/28/2011

Executed by at 3/8/2011 1:10:05 PM

Includes Data for Missouri

E-Prescribed New Prescription	Faxed Prescription	Printed Prescription	User Logged in from APS	User Crossed to APS	Transfer to RBM	Activities / User
0	177	33	2,635	238	0	3.69
1	161	28	2,963	253	0	3.50
17	188	19	2,833	175	0	2.38
0	199	29	2,636	237	0	1.81
0	197	23	2,169	365	0	1.61
0	270	18	1,035	339	0	1.44
0	241	15	2	279	0	1.54
0	264	23	6	0	0	1.51
0	168	20	0	0	6,025	1.63
0	116	14	0	0	25,425	1.79
0	136	17	2	0	26,473	1.81
0	130	18	8	0	24,031	1.76
<b>88</b>	<b>6,259</b>	<b>1,498</b>	<b>48,355</b>	<b>4,029</b>	<b>89,645</b>	

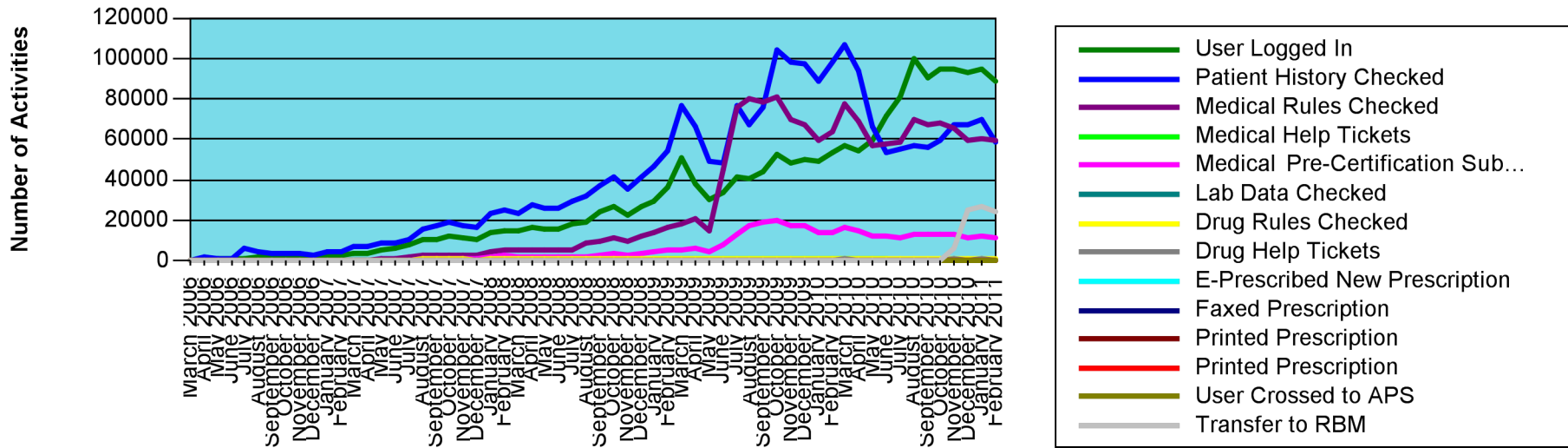


# CyberAccess Logging Information

From 1/1/2004 to 2/28/2011

Executed by at 3/8/2011 1:10:05 PM

Includes Data for Missouri





CyberAccess® Reporting

# CyberAccess Logging Information

From 1/1/2004 to 2/28/2011

Executed by at 3/8/2011 1:10:05 PM

Includes Data for Missouri