



CyberAccess Logging Information

From 4/1/2006 to 5/31/2011

Executed by at 6/11/2011 10:30:32 PM

Includes Data for Missouri

| Month | User Logged In | Patient History Checked | Medical Rules Checked | Medical Help Tickets | Medical Pre-Certification Submitted | Lab Data Checked | Clinical Traits Checked | Drug Rules Checked | Drug Help Tickets |
|----------------|----------------|-------------------------|-----------------------|----------------------|-------------------------------------|------------------|-------------------------|--------------------|-------------------|
| April 2006 | 896 | 1,726 | 0 | 0 | 0 | 0 | 0 | 185 | 31 |
| May 2006 | 944 | 1,320 | 0 | 0 | 0 | 0 | 0 | 165 | 45 |
| June 2006 | 755 | 1,016 | 0 | 0 | 0 | 0 | 0 | 86 | 29 |
| July 2006 | 1,283 | 6,185 | 29 | 10 | 0 | 0 | 0 | 162 | 31 |
| August 2006 | 2,001 | 4,226 | 179 | 21 | 0 | 0 | 0 | 326 | 60 |
| September 2006 | 1,787 | 3,434 | 210 | 59 | 0 | 0 | 0 | 186 | 59 |
| October 2006 | 1,938 | 3,614 | 186 | 46 | 0 | 0 | 0 | 236 | 69 |
| November 2006 | 1,816 | 3,671 | 142 | 52 | 0 | 0 | 0 | 217 | 88 |
| December 2006 | 1,641 | 2,484 | 91 | 19 | 0 | 0 | 0 | 210 | 69 |
| January 2007 | 2,455 | 4,497 | 186 | 48 | 0 | 0 | 0 | 309 | 80 |
| February 2007 | 2,711 | 4,514 | 144 | 42 | 3 | 0 | 0 | 255 | 90 |
| March 2007 | 3,586 | 6,770 | 139 | 47 | 6 | 0 | 0 | 337 | 125 |
| April 2007 | 3,876 | 7,107 | 199 | 60 | 10 | 0 | 0 | 380 | 137 |
| May 2007 | 5,723 | 8,713 | 1,045 | 308 | 25 | 0 | 0 | 494 | 176 |
| June 2007 | 6,029 | 8,489 | 1,400 | 397 | 203 | 0 | 0 | 412 | 136 |
| July 2007 | 7,850 | 10,748 | 1,888 | 518 | 387 | 0 | 0 | 511 | 174 |
| August 2007 | 10,265 | 15,371 | 2,519 | 574 | 706 | 0 | 0 | 733 | 259 |
| September 2007 | 10,251 | 17,229 | 2,528 | 548 | 911 | 0 | 0 | 690 | 279 |
| October 2007 | 12,414 | 18,892 | 2,765 | 650 | 1,241 | 0 | 0 | 725 | 320 |
| November 2007 | 11,485 | 17,140 | 2,810 | 570 | 1,368 | 0 | 0 | 726 | 321 |
| December 2007 | 10,164 | 16,170 | 2,476 | 444 | 1,303 | 0 | 0 | 586 | 256 |
| January 2008 | 14,227 | 23,532 | 4,146 | 969 | 2,175 | 0 | 0 | 704 | 309 |
| February 2008 | 14,559 | 24,885 | 5,246 | 633 | 2,514 | 0 | 0 | 682 | 263 |
| March 2008 | 14,407 | 23,407 | 4,978 | 630 | 2,198 | 0 | 0 | 724 | 293 |

WARNING: This report is the private property of the State. Secure handling and disposal rules must be applied to this document at all times. You may not make unauthorized copies of this document or distribute the data contained herein to any other parties without the express, written permission of the State. Your failure to handle this document properly may result in severe civil and criminal penalties.



CyberAccess Logging Information

From 4/1/2006 to 5/31/2011

Executed by at 6/11/2011 10:30:32 PM

Includes Data for Missouri

| E-Prescribed New Prescription | Faxed Prescription | Printed Prescription | User Logged in from APS | User Crossed to APS | Transfer to RBM | Activities / User |
|-------------------------------|--------------------|----------------------|-------------------------|---------------------|-----------------|-------------------|
| 0 | 0 | 48 | 0 | 0 | 0 | 2.22 |
| 0 | 0 | 16 | 0 | 0 | 0 | 1.64 |
| 0 | 3 | 5 | 0 | 0 | 0 | 1.51 |
| 0 | 2 | 7 | 0 | 0 | 0 | 5.01 |
| 0 | 11 | 20 | 0 | 0 | 0 | 2.42 |
| 0 | 1 | 14 | 0 | 0 | 0 | 2.22 |
| 0 | 31 | 19 | 0 | 0 | 0 | 2.17 |
| 0 | 16 | 24 | 0 | 0 | 0 | 2.32 |
| 0 | 11 | 32 | 0 | 0 | 0 | 1.78 |
| 0 | 21 | 44 | 0 | 0 | 0 | 2.11 |
| 0 | 52 | 20 | 0 | 0 | 0 | 1.89 |
| 0 | 42 | 31 | 0 | 0 | 0 | 2.09 |
| 0 | 81 | 20 | 0 | 0 | 0 | 2.06 |
| 0 | 68 | 45 | 0 | 0 | 0 | 1.90 |
| 0 | 60 | 35 | 0 | 0 | 0 | 1.85 |
| 0 | 92 | 30 | 0 | 0 | 0 | 1.83 |
| 0 | 131 | 28 | 0 | 0 | 0 | 1.98 |
| 0 | 120 | 32 | 0 | 0 | 0 | 2.18 |
| 0 | 102 | 38 | 0 | 0 | 0 | 1.99 |
| 0 | 98 | 37 | 0 | 0 | 0 | 2.01 |
| 0 | 61 | 22 | 0 | 0 | 0 | 2.10 |
| 0 | 94 | 24 | 0 | 0 | 0 | 2.25 |
| 0 | 117 | 27 | 0 | 0 | 0 | 2.36 |
| 0 | 114 | 24 | 0 | 0 | 0 | 2.25 |

WARNING: This report is the private property of the State. Secure handling and disposal rules must be applied to this document at all times. You may not make unauthorized copies of this document or distribute the data contained herein to any other parties without the express, written permission of the State. Your failure to handle this document properly may result in severe civil and criminal penalties.



CyberAccess Logging Information

From 4/1/2006 to 5/31/2011

Executed by at 6/11/2011 10:30:32 PM

Includes Data for Missouri

| Month | User Logged In | Patient History Checked | Medical Rules Checked | Medical Help Tickets | Medical Pre-Certification Submitted | Lab Data Checked | Clinical Traits Checked | Drug Rules Checked | Drug Help Tickets |
|----------------|----------------|-------------------------|-----------------------|----------------------|-------------------------------------|------------------|-------------------------|--------------------|-------------------|
| April 2008 | 16,567 | 27,335 | 5,187 | 693 | 2,227 | 0 | 0 | 958 | 377 |
| May 2008 | 15,710 | 25,810 | 5,075 | 585 | 2,004 | 0 | 0 | 786 | 333 |
| June 2008 | 15,404 | 25,757 | 5,123 | 651 | 1,872 | 0 | 0 | 735 | 289 |
| July 2008 | 18,493 | 29,567 | 5,437 | 565 | 1,836 | 50 | 0 | 782 | 310 |
| August 2008 | 19,417 | 32,323 | 9,188 | 571 | 2,276 | 42 | 0 | 930 | 324 |
| September 2008 | 23,991 | 36,932 | 9,923 | 655 | 2,771 | 35 | 0 | 943 | 402 |
| October 2008 | 27,152 | 41,384 | 11,717 | 719 | 3,231 | 49 | 0 | 916 | 368 |
| November 2008 | 22,839 | 35,214 | 9,578 | 578 | 2,774 | 27 | 0 | 761 | 328 |
| December 2008 | 26,547 | 41,775 | 12,498 | 606 | 3,499 | 22 | 0 | 719 | 313 |
| January 2009 | 29,435 | 46,789 | 13,655 | 679 | 4,271 | 25 | 0 | 1,069 | 463 |
| February 2009 | 36,361 | 54,563 | 16,170 | 701 | 5,155 | 18 | 0 | 981 | 441 |
| March 2009 | 50,738 | 76,870 | 18,033 | 755 | 5,655 | 20 | 0 | 976 | 417 |
| April 2009 | 38,377 | 66,072 | 20,680 | 808 | 6,051 | 1 | 0 | 950 | 416 |
| May 2009 | 30,595 | 49,576 | 14,981 | 660 | 4,349 | 18 | 0 | 827 | 350 |
| June 2009 | 33,438 | 48,614 | 44,469 | 856 | 8,361 | 26 | 0 | 815 | 315 |
| July 2009 | 41,336 | 77,137 | 76,063 | 877 | 13,220 | 16 | 0 | 799 | 341 |
| August 2009 | 40,364 | 66,946 | 80,468 | 836 | 17,258 | 8 | 101 | 771 | 350 |
| September 2009 | 43,956 | 75,857 | 78,437 | 851 | 19,477 | 132 | 168 | 899 | 353 |
| October 2009 | 52,301 | 104,269 | 81,230 | 825 | 20,395 | 3 | 179 | 1,111 | 449 |
| November 2009 | 48,697 | 98,120 | 69,820 | 748 | 17,645 | 23 | 129 | 1,005 | 472 |
| December 2009 | 50,265 | 97,204 | 67,052 | 760 | 17,246 | 34 | 141 | 1,102 | 511 |
| January 2010 | 48,945 | 88,468 | 59,563 | 773 | 14,343 | 31 | 154 | 983 | 499 |
| February 2010 | 53,477 | 98,289 | 63,663 | 790 | 14,139 | 7 | 148 | 1,112 | 551 |
| March 2010 | 56,519 | 107,128 | 77,834 | 1,021 | 16,794 | 41 | 222 | 1,415 | 692 |

WARNING: This report is the private property of the State. Secure handling and disposal rules must be applied to this document at all times. You may not make unauthorized copies of this document or distribute the data contained herein to any other parties without the express, written permission of the State. Your failure to handle this document properly may result in severe civil and criminal penalties.



CyberAccess Logging Information

From 4/1/2006 to 5/31/2011

Executed by at 6/11/2011 10:30:32 PM

Includes Data for Missouri

| E-Prescribed New Prescription | Faxed Prescription | Printed Prescription | User Logged in from APS | User Crossed to APS | Transfer to RBM | Activities / User |
|-------------------------------|--------------------|----------------------|-------------------------|---------------------|-----------------|-------------------|
| 0 | 131 | 22 | 0 | 0 | 0 | 2.23 |
| 0 | 130 | 38 | 0 | 0 | 0 | 2.21 |
| 0 | 122 | 30 | 0 | 0 | 0 | 2.24 |
| 0 | 81 | 25 | 0 | 0 | 0 | 2.09 |
| 0 | 197 | 25 | 0 | 0 | 0 | 2.36 |
| 0 | 99 | 23 | 0 | 0 | 0 | 2.16 |
| 0 | 121 | 26 | 0 | 0 | 0 | 2.16 |
| 0 | 136 | 33 | 0 | 0 | 0 | 2.16 |
| 0 | 95 | 23 | 0 | 0 | 0 | 2.24 |
| 0 | 130 | 29 | 0 | 0 | 0 | 2.28 |
| 0 | 115 | 39 | 0 | 0 | 0 | 2.15 |
| 0 | 134 | 33 | 0 | 206 | 0 | 2.03 |
| 1 | 120 | 22 | 0 | 189 | 0 | 2.48 |
| 10 | 93 | 23 | 5,255 | 161 | 0 | 2.49 |
| 17 | 89 | 27 | 5,416 | 226 | 0 | 3.27 |
| 15 | 90 | 18 | 3,062 | 171 | 0 | 4.16 |
| 1 | 74 | 14 | 3,413 | 181 | 0 | 4.22 |
| 2 | 130 | 23 | 3,203 | 167 | 0 | 4.09 |
| 0 | 112 | 23 | 2,845 | 202 | 0 | 4.05 |
| 0 | 125 | 25 | 2,655 | 171 | 0 | 3.92 |
| 17 | 118 | 19 | 3,191 | 155 | 0 | 3.73 |
| 6 | 102 | 16 | 2,396 | 136 | 0 | 3.42 |
| 1 | 97 | 31 | 2,630 | 174 | 0 | 3.40 |
| 0 | 177 | 33 | 2,635 | 238 | 0 | 3.69 |

WARNING: This report is the private property of the State. Secure handling and disposal rules must be applied to this document at all times. You may not make unauthorized copies of this document or distribute the data contained herein to any other parties without the express, written permission of the State. Your failure to handle this document properly may result in severe civil and criminal penalties.



CyberAccess Logging Information

From 4/1/2006 to 5/31/2011

Executed by at 6/11/2011 10:30:32 PM

Includes Data for Missouri

| Month | User Logged In | Patient History Checked | Medical Rules Checked | Medical Help Tickets | Medical Pre-Certification Submitted | Lab Data Checked | Clinical Traits Checked | Drug Rules Checked | Drug Help Tickets |
|-----------------------|------------------|-------------------------|-----------------------|----------------------|-------------------------------------|------------------|-------------------------|--------------------|-------------------|
| April 2010 | 53,974 | 93,940 | 69,362 | 885 | 14,831 | 43 | 2,264 | 1,195 | 527 |
| May 2010 | 59,354 | 66,773 | 56,663 | 770 | 12,179 | 26 | 154 | 1,067 | 432 |
| June 2010 | 71,698 | 53,555 | 57,938 | 876 | 12,143 | 38 | 141 | 1,066 | 466 |
| July 2010 | 81,000 | 55,056 | 58,323 | 477 | 11,758 | 35 | 193 | 1,016 | 410 |
| August 2010 | 99,775 | 56,619 | 69,691 | 219 | 13,175 | 38 | 142 | 1,229 | 502 |
| September 2010 | 90,481 | 55,742 | 67,360 | 213 | 13,024 | 33 | 143 | 1,265 | 527 |
| October 2010 | 94,732 | 59,666 | 67,865 | 202 | 13,254 | 34 | 147 | 1,335 | 543 |
| November 2010 | 94,756 | 67,434 | 65,491 | 195 | 12,753 | 45 | 144 | 1,364 | 655 |
| December 2010 | 92,651 | 67,159 | 59,685 | 192 | 11,742 | 29 | 127 | 1,106 | 546 |
| January 2011 | 94,362 | 69,430 | 60,523 | 230 | 12,059 | 21 | 169 | 1,291 | 678 |
| February 2011 | 88,615 | 58,916 | 59,189 | 196 | 11,661 | 55 | 147 | 1,148 | 555 |
| March 2011 | 107,753 | 83,954 | 80,870 | 278 | 15,630 | 44 | 300 | 1,538 | 771 |
| April 2011 | 97,886 | 74,149 | 68,001 | 243 | 12,711 | 33 | 175 | 1,411 | 734 |
| May 2011 | 106,418 | 80,836 | 63,487 | 224 | 11,752 | 24 | 228 | 1,341 | 705 |
| All Time Total | 2,260,520 | 2,660,069 | 1,816,066 | 29,488 | 402,609 | 1,131 | 5,809 | 50,221 | 21,667 |

WARNING: This report is the private property of the State. Secure handling and disposal rules must be applied to this document at all times. You may not make unauthorized copies of this document or distribute the data contained herein to any other parties without the express, written permission of the State. Your failure to handle this document properly may result in severe civil and criminal penalties.



CyberAccess Logging Information

From 4/1/2006 to 5/31/2011

Executed by at 6/11/2011 10:30:32 PM

Includes Data for Missouri

| E-Prescribed New Prescription | Faxed Prescription | Printed Prescription | User Logged in from APS | User Crossed to APS | Transfer to RBM | Activities / User |
|-------------------------------|--------------------|----------------------|-------------------------|---------------------|-----------------|-------------------|
| 1 | 161 | 28 | 2,963 | 253 | 0 | 3.50 |
| 17 | 188 | 19 | 2,833 | 175 | 0 | 2.38 |
| 0 | 199 | 29 | 2,636 | 237 | 0 | 1.81 |
| 0 | 197 | 23 | 2,169 | 365 | 0 | 1.61 |
| 0 | 270 | 18 | 1,035 | 339 | 0 | 1.44 |
| 0 | 241 | 15 | 2 | 278 | 0 | 1.54 |
| 0 | 264 | 23 | 5 | 0 | 0 | 1.51 |
| 0 | 168 | 20 | 0 | 0 | 6,025 | 1.63 |
| 0 | 116 | 14 | 0 | 0 | 25,425 | 1.79 |
| 0 | 136 | 17 | 2 | 0 | 26,473 | 1.81 |
| 0 | 130 | 18 | 8 | 0 | 24,031 | 1.76 |
| 0 | 165 | 16 | 3 | 0 | 31,526 | 2.00 |
| 0 | 116 | 20 | 14 | 0 | 29,111 | 1.91 |
| 0 | 111 | 22 | 1 | 0 | 29,942 | 1.78 |
| 88 | 6,643 | 1,557 | 48,373 | 4,024 | 183,883 | |

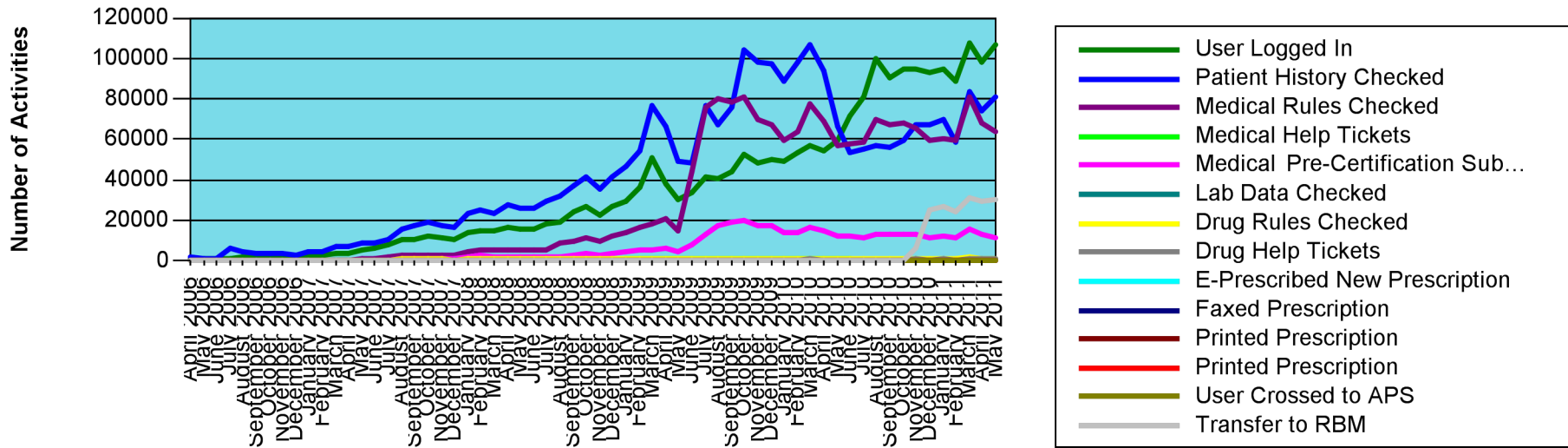


CyberAccess Logging Information

From 4/1/2006 to 5/31/2011

Executed by at 6/11/2011 10:30:32 PM

Includes Data for Missouri





CyberAccess® Reporting

CyberAccess Logging Information

From 4/1/2006 to 5/31/2011

Executed by at 6/11/2011 10:30:32 PM

Includes Data for Missouri