



CyberAccess Logging Information

From 4/1/2006 to 4/30/2012 11:59:57 PM

Executed by Tom Noble at 5/3/2012 2:00:35 AM

Includes Data for Missouri

Month	User Logged In	Patient History Checked	Medical Rules Checked	Medical Help Tickets	Medical Pre-Certification Submitted	Lab Data Checked	Clinical Traits Checked	Drug Rules Checked	Drug Help Tickets
April 2006	896	1,726	0	0	0	0	0	185	31
May 2006	944	1,320	0	0	0	0	0	165	45
June 2006	755	1,016	0	0	0	0	0	86	29
July 2006	1,283	6,185	29	10	0	0	0	162	31
August 2006	2,001	4,226	179	21	0	0	0	326	60
September 2006	1,787	3,434	210	59	0	0	0	186	59
October 2006	1,937	3,614	186	46	0	0	0	236	69
November 2006	1,816	3,671	142	52	0	0	0	217	88
December 2006	1,641	2,484	91	19	0	0	0	210	69
January 2007	2,455	4,497	186	48	0	0	0	309	80
February 2007	2,711	4,514	144	42	3	0	0	255	90
March 2007	3,586	6,770	139	47	6	0	0	337	125
April 2007	3,861	7,065	199	60	10	0	0	380	137
May 2007	5,707	8,652	1,045	308	25	0	0	491	176
June 2007	6,025	8,471	1,399	397	203	0	0	411	136
July 2007	7,842	10,747	1,887	518	386	0	0	511	174
August 2007	10,263	15,365	2,519	574	706	0	0	733	259
September 2007	10,236	17,192	2,526	548	909	0	0	689	279
October 2007	12,398	18,859	2,753	649	1,237	0	0	719	316
November 2007	11,472	17,069	2,800	569	1,364	0	0	726	321
December 2007	10,161	16,159	2,474	444	1,303	0	0	586	256
January 2008	14,214	23,495	4,141	969	2,172	0	0	704	309
February 2008	14,533	24,821	5,238	632	2,507	0	0	680	263
March 2008	14,395	23,397	4,976	629	2,198	0	0	724	293

WARNING: This report is the private property of the State. Secure handling and disposal rules must be applied to this document at all times. You may not make unauthorized copies of this document or distribute the data contained herein to any other parties without the express, written permission of the State. Your failure to handle this document properly may result in severe civil and criminal penalties.



CyberAccess Logging Information

From 4/1/2006 to 4/30/2012 11:59:57 PM

Executed by Tom Noble at 5/3/2012 2:00:35 AM

Includes Data for Missouri

E-Prescribed New Prescription	Faxed Prescription	Printed Prescription	User Logged in from APS	User Crossed to APS	Transfer to RBM	HCY Forms Completed	Activities / User
0	0	48	0	0	0		2.22
0	0	16	0	0	0		1.64
0	3	5	0	0	0		1.51
0	2	7	0	0	0		5.01
0	11	20	0	0	0		2.42
0	1	14	0	0	0		2.22
0	31	19	0	0	0		2.17
0	16	24	0	0	0		2.32
0	11	32	0	0	0		1.78
0	21	44	0	0	0		2.11
0	52	20	0	0	0		1.89
0	42	31	0	0	0		2.09
0	81	20	0	0	0		2.06
0	68	44	0	0	0		1.89
0	60	34	0	0	0		1.84
0	92	30	0	0	0		1.83
0	131	28	0	0	0		1.98
0	119	32	0	0	0		2.18
0	102	38	0	0	0		1.99
0	98	37	0	0	0		2.00
0	61	22	0	0	0		2.10
0	94	24	0	0	0		2.24
0	116	27	0	0	0		2.36
0	114	24	0	0	0		2.25

WARNING: This report is the private property of the State. Secure handling and disposal rules must be applied to this document at all times. You may not make unauthorized copies of this document or distribute the data contained herein to any other parties without the express, written permission of the State. Your failure to handle this document properly may result in severe civil and criminal penalties.



CyberAccess Logging Information

From 4/1/2006 to 4/30/2012 11:59:57 PM

Executed by Tom Noble at 5/3/2012 2:00:35 AM

Includes Data for Missouri

Month	User Logged In	Patient History Checked	Medical Rules Checked	Medical Help Tickets	Medical Pre-Certification Submitted	Lab Data Checked	Clinical Traits Checked	Drug Rules Checked	Drug Help Tickets
April 2008	16,541	27,314	5,184	693	2,225	0	0	958	377
May 2008	15,701	25,800	5,071	585	2,003	0	0	786	333
June 2008	15,390	25,744	5,115	650	1,869	0	0	735	289
July 2008	18,469	29,532	5,431	564	1,833	50	0	782	310
August 2008	19,411	32,317	9,187	571	2,275	42	0	929	324
September 2008	23,975	36,909	9,905	655	2,769	35	0	941	402
October 2008	27,127	41,349	11,692	719	3,227	49	0	916	368
November 2008	22,829	35,191	9,559	576	2,771	27	0	756	327
December 2008	26,539	41,759	12,468	604	3,494	22	0	719	313
January 2009	29,401	46,708	13,640	679	4,263	25	0	1,067	463
February 2009	36,355	54,556	16,155	700	5,152	18	0	979	441
March 2009	50,718	76,830	17,996	755	5,644	20	0	974	417
April 2009	38,366	66,047	20,665	808	6,045	1	0	946	416
May 2009	30,579	49,540	14,966	659	4,344	18	0	827	350
June 2009	33,434	48,614	44,457	856	8,360	26	0	814	315
July 2009	41,329	77,135	76,016	877	13,217	16	0	797	341
August 2009	40,354	66,938	80,451	836	17,253	8	101	767	350
September 2009	43,945	75,847	78,432	851	19,477	132	167	899	353
October 2009	52,300	104,269	81,230	825	20,395	3	179	1,111	449
November 2009	48,694	98,119	69,820	748	17,645	23	129	1,004	472
December 2009	50,263	97,204	67,036	760	17,245	34	141	1,102	511
January 2010	48,942	88,468	59,562	773	14,343	31	154	979	499
February 2010	53,471	98,289	63,660	788	14,139	7	148	1,111	551
March 2010	56,513	107,124	77,826	1,020	16,794	41	222	1,413	692

WARNING: This report is the private property of the State. Secure handling and disposal rules must be applied to this document at all times. You may not make unauthorized copies of this document or distribute the data contained herein to any other parties without the express, written permission of the State. Your failure to handle this document properly may result in severe civil and criminal penalties.



CyberAccess Logging Information

From 4/1/2006 to 4/30/2012 11:59:57 PM

Executed by Tom Noble at 5/3/2012 2:00:35 AM

Includes Data for Missouri

E-Prescribed New Prescription	Faxed Prescription	Printed Prescription	User Logged in from APS	User Crossed to APS	Transfer to RBM	HCY Forms Completed	Activities / User
0	131	22	0	0	0		2.23
0	130	38	0	0	0		2.21
0	122	30	0	0	0		2.25
0	81	25	0	0	0		2.09
0	197	25	0	0	0		2.36
0	98	23	0	0	0		2.16
0	121	26	0	0	0		2.16
0	135	32	0	0	0		2.16
0	95	23	0	0	0		2.24
0	130	29	0	0	0		2.28
0	115	39	0	0	0		2.15
0	134	33	0	205	0		2.03
1	117	22	0	189	0		2.48
10	93	23	5,255	161	0		2.49
17	88	27	5,416	225	0		3.27
15	90	18	3,062	171	0		4.16
1	74	14	3,413	181	0		4.22
2	130	23	3,203	167	0		4.09
0	112	23	2,845	202	0		4.05
0	124	25	2,655	171	0		3.92
17	118	19	3,191	155	0		3.73
6	101	15	2,396	136	0		3.42
1	97	31	2,630	172	0		3.40
0	177	33	2,635	238	0		3.69

WARNING: This report is the private property of the State. Secure handling and disposal rules must be applied to this document at all times. You may not make unauthorized copies of this document or distribute the data contained herein to any other parties without the express, written permission of the State. Your failure to handle this document properly may result in severe civil and criminal penalties.



CyberAccess Logging Information

From 4/1/2006 to 4/30/2012 11:59:57 PM

Executed by Tom Noble at 5/3/2012 2:00:35 AM

Includes Data for Missouri

Month	User Logged In	Patient History Checked	Medical Rules Checked	Medical Help Tickets	Medical Pre-Certification Submitted	Lab Data Checked	Clinical Traits Checked	Drug Rules Checked	Drug Help Tickets
April 2010	53,970	93,935	69,361	885	14,831	43	2,264	1,195	527
May 2010	59,350	66,772	56,634	770	12,178	26	154	1,067	432
June 2010	71,698	53,555	57,938	876	12,143	38	141	1,066	466
July 2010	80,987	55,050	58,323	477	11,758	35	193	1,016	410
August 2010	99,767	56,619	69,691	219	13,175	38	142	1,229	502
September 2010	90,461	55,736	67,348	213	13,023	33	143	1,265	527
October 2010	94,717	59,664	67,865	202	13,254	34	147	1,335	543
November 2010	94,732	67,431	65,483	195	12,751	45	144	1,362	655
December 2010	92,633	67,157	59,685	192	11,742	29	127	1,106	546
January 2011	94,334	69,430	60,523	230	12,059	21	169	1,291	678
February 2011	88,598	58,916	59,189	196	11,661	55	147	1,148	555
March 2011	107,753	83,954	80,862	278	15,628	44	300	1,538	771
April 2011	97,880	74,149	68,001	243	12,711	33	175	1,411	734
May 2011	106,414	80,835	63,487	224	11,752	24	228	1,341	705
June 2011	120,983	80,692	62,070	252	11,303	29	299	1,277	713
July 2011	118,935	74,354	57,743	199	10,443	23	216	1,234	653
August 2011	130,920	90,235	79,661	259	14,243	36	261	1,495	794
September 2011	112,447	77,449	71,099	223	13,330	41	230	1,407	783
October 2011	113,600	81,948	72,019	218	13,502	24	218	1,342	740
November 2011	106,443	78,151	69,184	207	13,048	65	239	1,518	841
December 2011	107,775	87,446	64,757	232	12,634	58	246	1,373	722
January 2012	120,026	91,724	70,023	237	13,689	112	275	1,469	781
February 2012	124,551	93,528	71,291	239	13,646	96	290	1,486	808
March 2012	134,313	95,594	47,558	154	9,329	157	282	1,577	839

WARNING: This report is the private property of the State. Secure handling and disposal rules must be applied to this document at all times. You may not make unauthorized copies of this document or distribute the data contained herein to any other parties without the express, written permission of the State. Your failure to handle this document properly may result in severe civil and criminal penalties.



CyberAccess Logging Information

From 4/1/2006 to 4/30/2012 11:59:57 PM

Executed by Tom Noble at 5/3/2012 2:00:35 AM

Includes Data for Missouri

E-Prescribed New Prescription	Faxed Prescription	Printed Prescription	User Logged in from APS	User Crossed to APS	Transfer to RBM	HCY Forms Completed	Activities / User
1	161	28	2,962	253	0		3.50
17	188	19	2,833	175	0		2.38
0	199	29	2,636	237	0		1.81
0	197	23	2,169	364	0		1.61
0	270	18	1,035	339	0		1.44
0	241	15	2	277	0		1.54
0	264	23	5	0	0		1.51
0	168	20	0	0	6,017		1.63
0	116	14	0	0	25,406		1.79
0	136	17	2	0	26,434		1.81
0	130	18	8	0	24,010		1.76
0	165	16	3	0	31,526		2.00
0	116	20	14	0	29,105		1.91
0	111	22	1	0	29,938		1.78
0	117	19	4	0	29,408		1.54
0	64	16	3	0	29,088		1.47
0	144	18	9	0	30,150		1.66
0	138	23	4	0	22,203		1.66
0	117	18	5	0	21,347		1.69
0	139	27	3	0	19,228		1.72
0	132	25	3	0	19,128		1.74
0	98	23	8	0	21,252		1.67
0	83	15	7	0	19,970		1.62
0	104	21	7	0	19,949		1.31

WARNING: This report is the private property of the State. Secure handling and disposal rules must be applied to this document at all times. You may not make unauthorized copies of this document or distribute the data contained herein to any other parties without the express, written permission of the State. Your failure to handle this document properly may result in severe civil and criminal penalties.

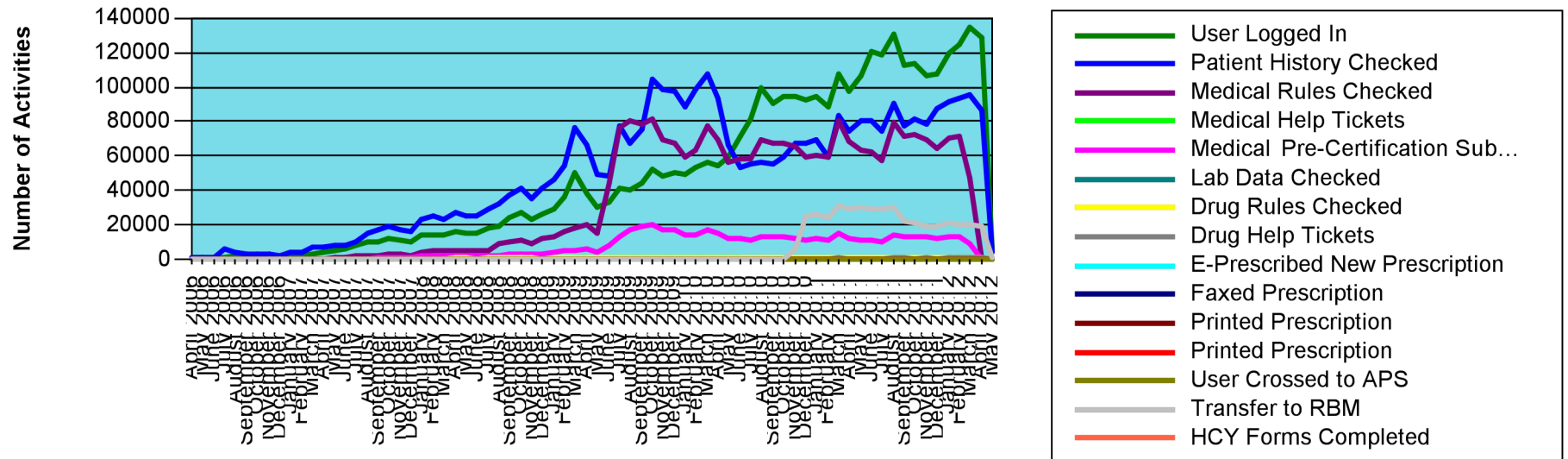
CyberAccess Logging Information

From 4/1/2006 to 4/30/2012 11:59:57 PM

Executed by Tom Noble at 5/3/2012 2:00:35 AM

Includes Data for Missouri

Month	User Logged In	Patient History Checked	Medical Rules Checked	Medical Help Tickets	Medical Pre-Certification Submitted	Lab Data Checked	Clinical Traits Checked	Drug Rules Checked	Drug Help Tickets
April 2012	128,388	86,842	33	1	5	192	237	1,433	753
May 2012	5,805	4,281	0	0	0	2	18	66	27
All Time Total	3,546,675	3,576,587	2,458,615	31,614	523,649	1,962	8,549	65,511	29,903





CyberAccess® Reporting

CyberAccess Logging Information

From 4/1/2006 to 4/30/2012 11:59:57 PM

Executed by Tom Noble at 5/3/2012 2:00:35 AM

Includes Data for Missouri

E-Prescribed New Prescription	Faxed Prescription	Printed Prescription	User Logged in from APS	User Crossed to APS	Transfer to RBM	HCY Forms Completed	Activities / User
0	138	21	4	0	19,610		0.85
0	7	2	0	0	908		0.92
88	7,887	1,774	48,429	4,018	425,648		

WARNING: This report is the private property of the State. Secure handling and disposal rules must be applied to this document at all times. You may not make unauthorized copies of this document or distribute the data contained herein to any other parties without the express, written permission of the State. Your failure to handle this document properly may result in severe civil and criminal penalties.