

# Aligning Forces for Quality and Efficacy

## Drug Utilization Board

**July 15, 2009**

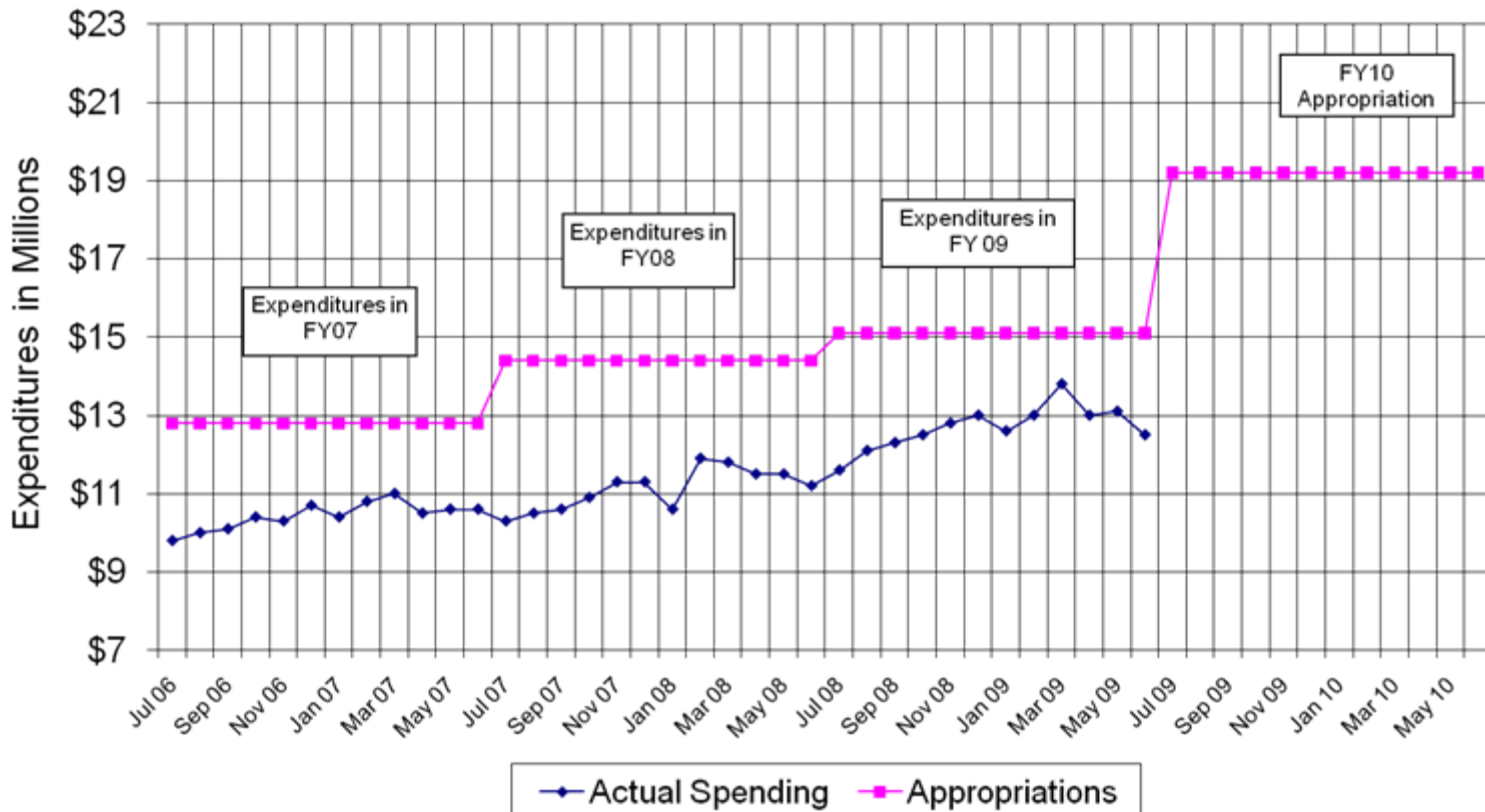
George L. Oestreich, PharmD, MPA

Deputy Division Director, Clinical Services

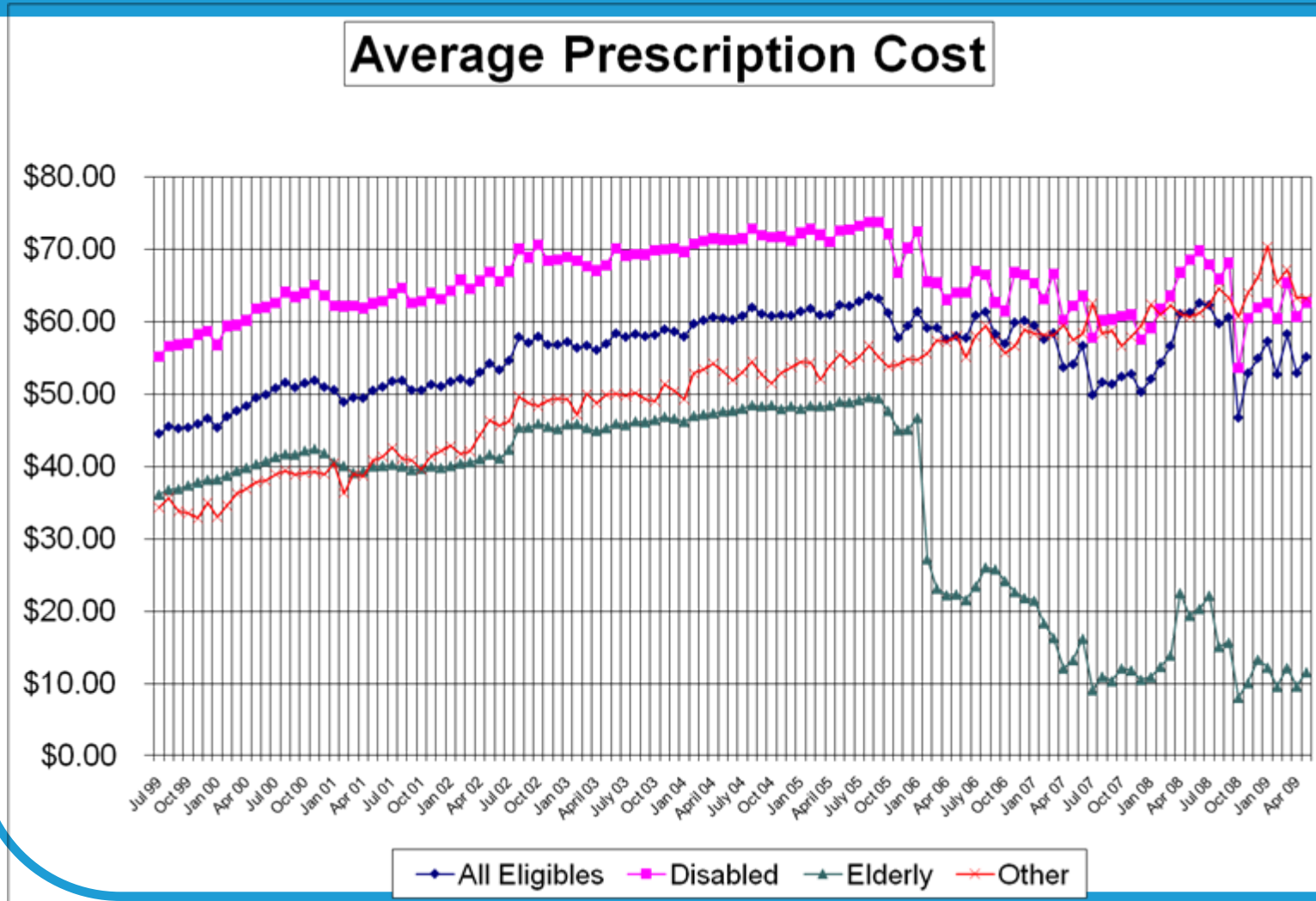


# MO HealthNet Average Weekly Pharmacy Expenditures

**Pharmacy Cost Trends**  
Average Weekly Expenditures

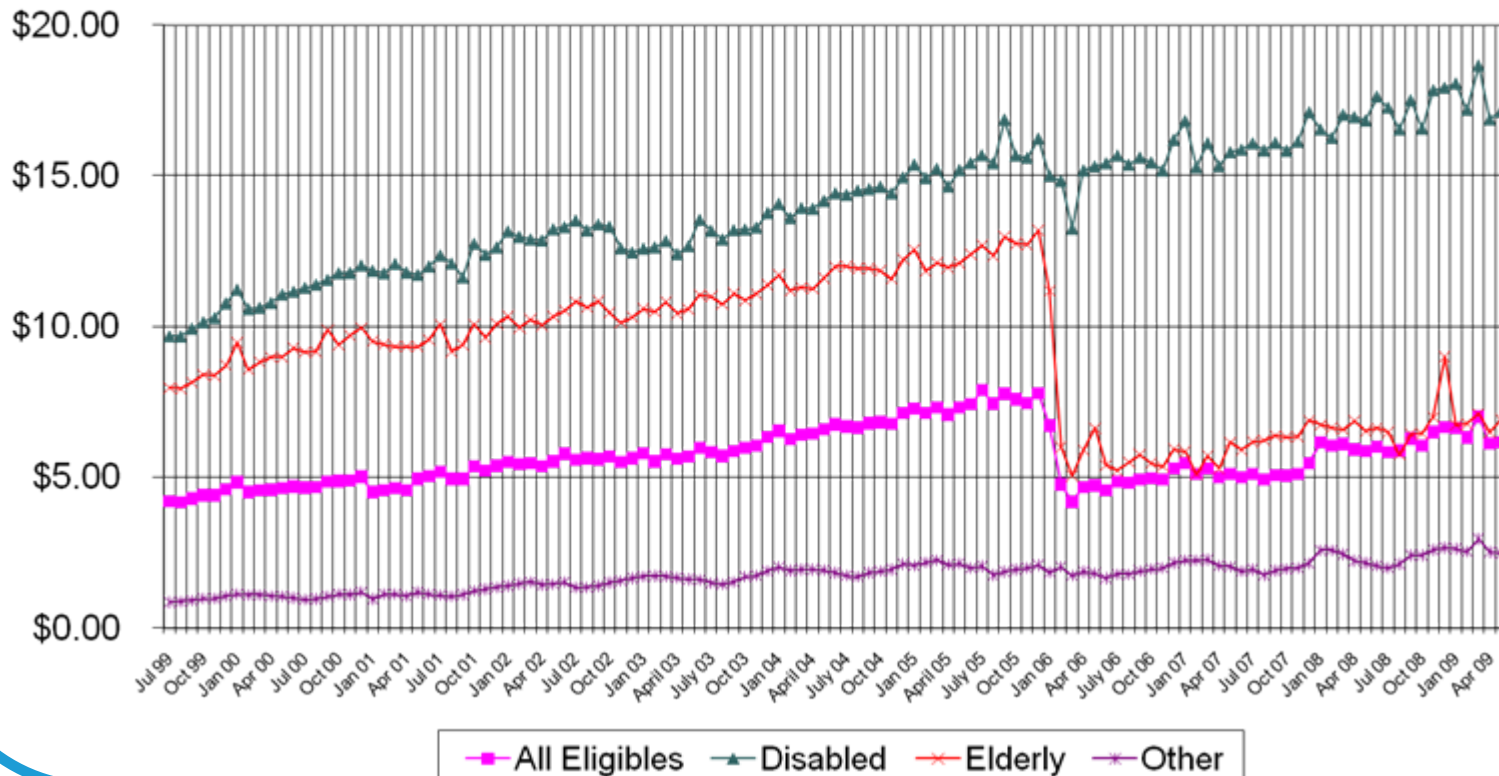


# The Average Prescription Charge



# The Cost Per Eligible per Work Day

**Cost Per Eligible/Work Day  
Without Duals**



# Medicaid Eligible's Growth Rate

## Disabled Eligibles With Duals

July 01 thru May 09



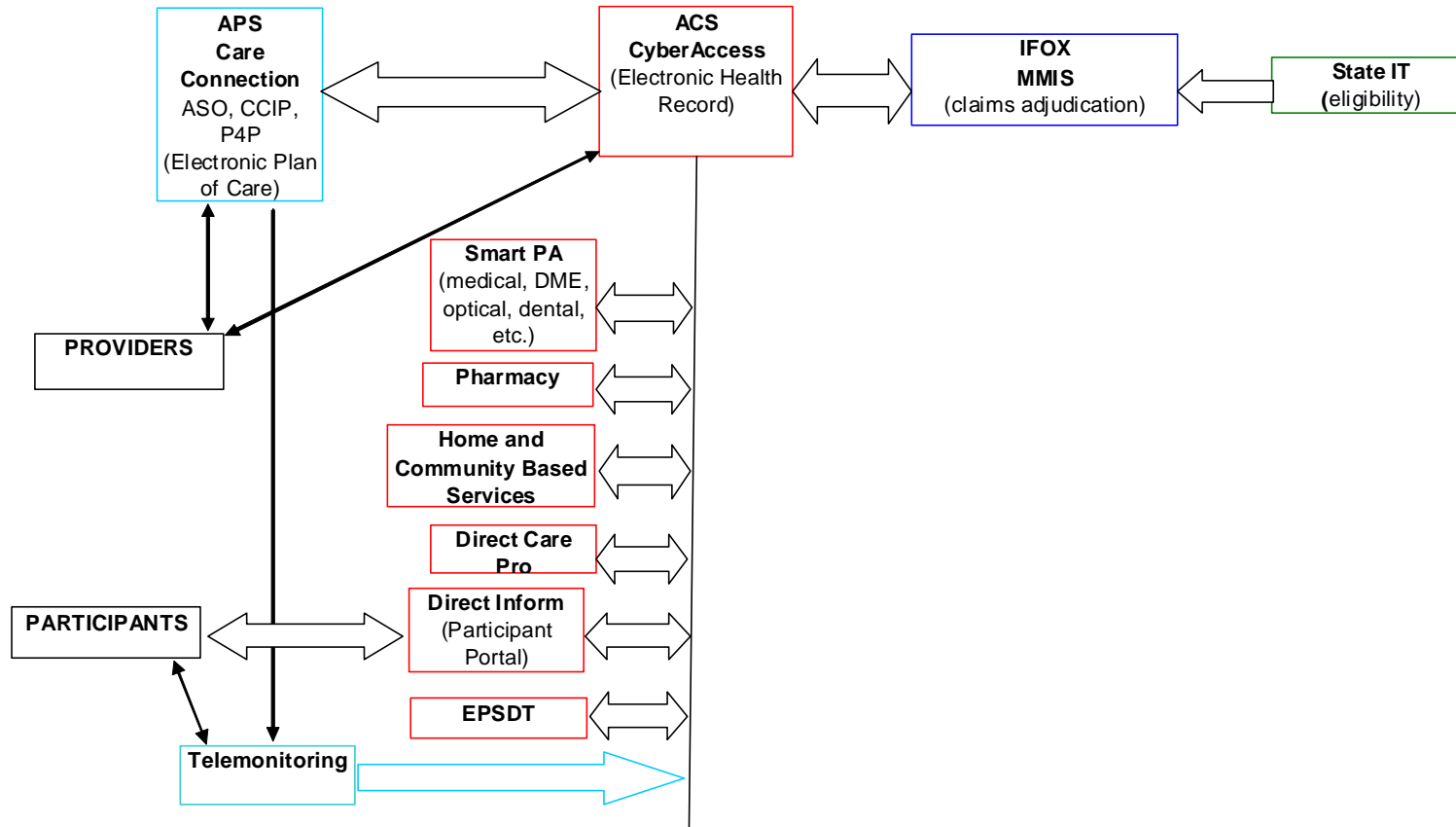
# Current Tools for Clinical Use

- Smart PA
- Decision Support Tools
  - CyberFormance
  - Paid Claim Tool
- CyberAccess
- Care Connection

# Current Tools for Patient/Participant Use

- Direct Inform (A PHR [patient/personnel health record])
- MORx Compare (web tool)

# Today's HIT, How it Fits Together





# CyberAccess™

## ● Current Features

- Patient demographics
- Electronic Health Record
  - Record of all participant prescriptions
  - All procedures codes
  - All diagnosis codes
- E prescribing
- Preferred Drug List support
  - Access to preferred medication list
  - Precertification of medications via clinical algorithms
  - Implementation of step therapy
  - Prior authorization of medications)
- Medication possession ratio
- DirectCare Pro

# CyberAccess™ (current, con't)

- General Medical Uses
  - Integrated call center support
  - Availability of laboratory values (and references)
  - Precertification of imaging
  - Precertification of durable medical equipment (DME)

# CyberAccess™ (con't, future)

- Near Term Additions (SF 2009)
  - Determination of level of care and precertification of home and community based services
  - Electronic capture and storage of EPSDT forms
  - Precertification of optical (as covered)
  - Patient level editing
  - Electronic medical record lite (EMR)
  - Patient case management tools
    - Risk assessment
    - Stratification
    - Gaps in therapy
    - Episodes of care
    - Concurrent case management
  - Eligibility determination reporting
  - Incorporation of diabetic patient care management information

# CyberAccess™ (con't, 2<sup>nd</sup> quarter 2009 and beyond )

- Later term additions
  - Interoperability with other services (EMRs, hospital records)
  - Precertification of dental
  - “Plug-ins” for EMR
    - Scheduling
    - Billing
  - Integrated billing for service
  - Integration of discharge summary and medication reconciliation
  - Integration of home monitoring data/information
  - Integration of immunization registry

# Direct Inform™

- Access to program provided benefits
  - Program integrity notification of services provides (EOB equivalent)
- Notification of wellness lapses
- Web portal participant health information

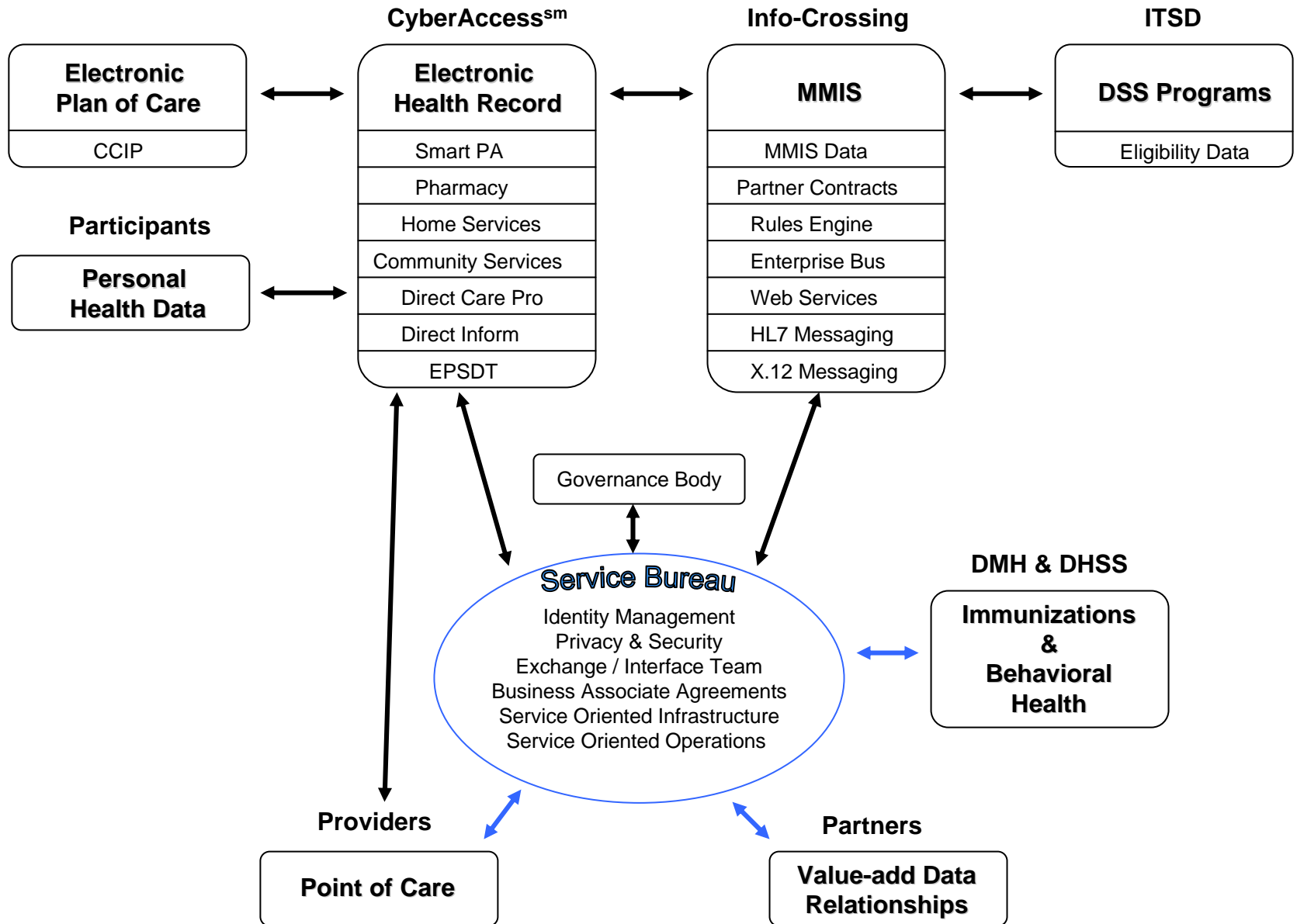
# Future Addition Across User Interfaces

- Direct notification to participants and providers of gaps of care
- Integration of drill down to best practice lapse and gaps of care
- Integration of patient empowerment information such as asthma action plans, diabetic management plans of care
- Wellness initiatives such as anti-obesity programs
- Smoking cessation programs and general wellness empowerment tools

# Who Do We Serve?

- All state partners
    - DSS
    - DHSS
    - DMH
    - DESE
    - Corrections
  - What are our roles with private sector partners
- Collaborating on HIT strategic plan
- 
- A diagram showing three blue circular bullet points labeled 'DSS', 'DHSS', and 'DMH' on the left. Three black arrows originate from the right side of each of these three bullet points and converge towards a central text block on the right that reads 'Collaborating on HIT strategic plan'.

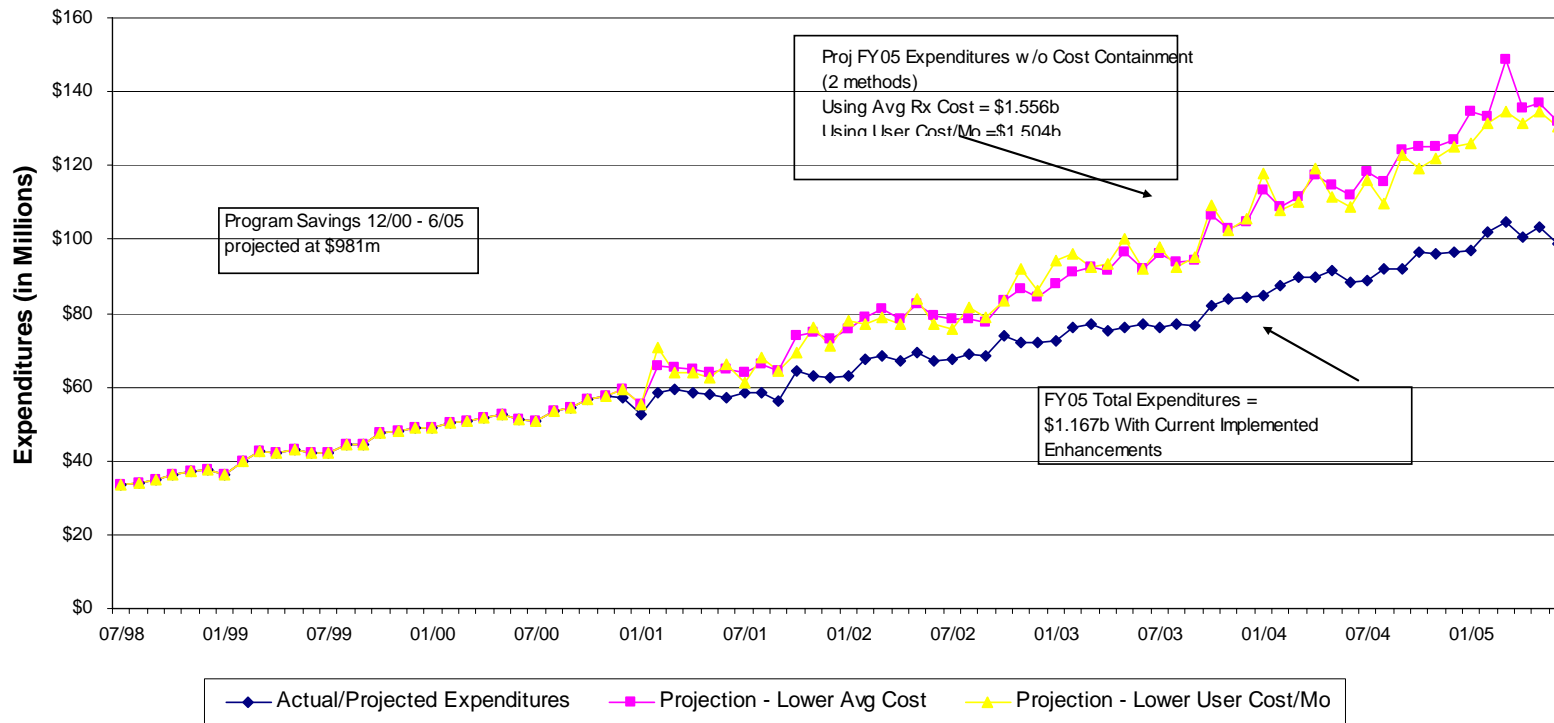
# Missouri – Statewide Health Information Exchange





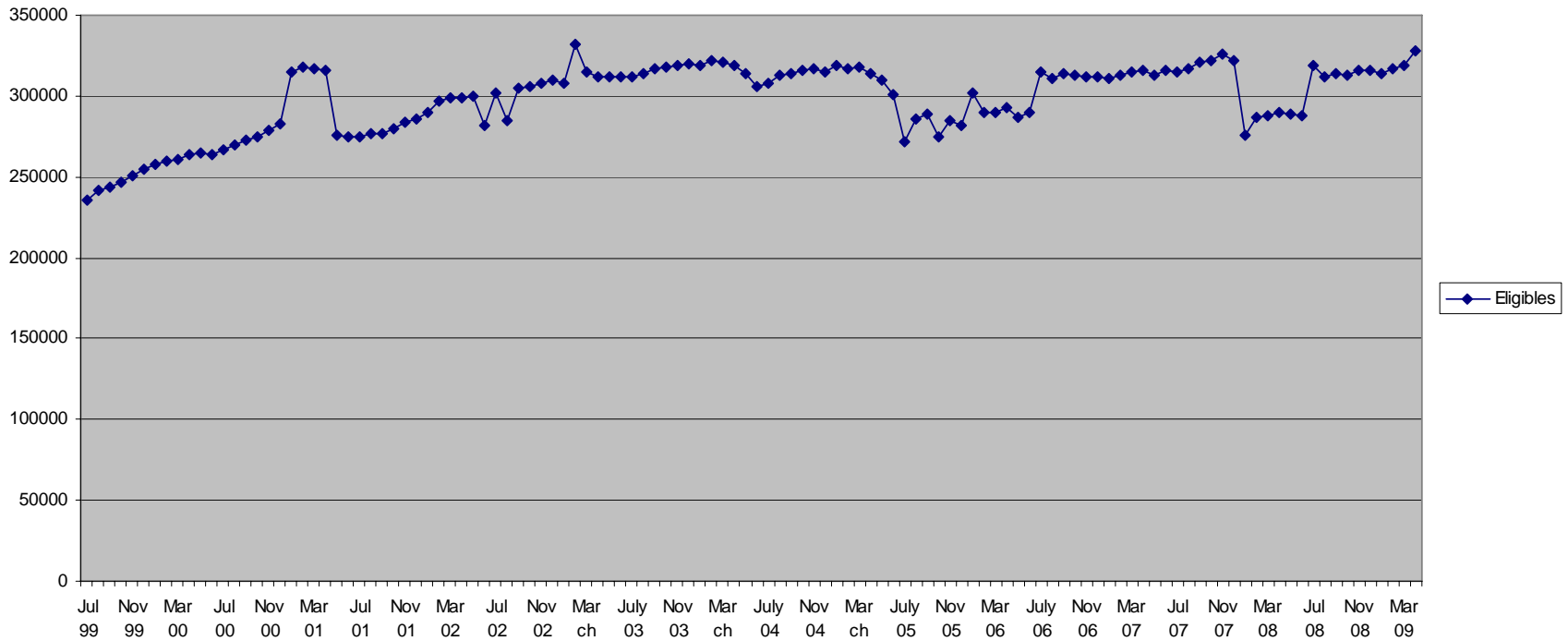
# Targeting Program Performance

**Total Monthly Pharmacy Cost**



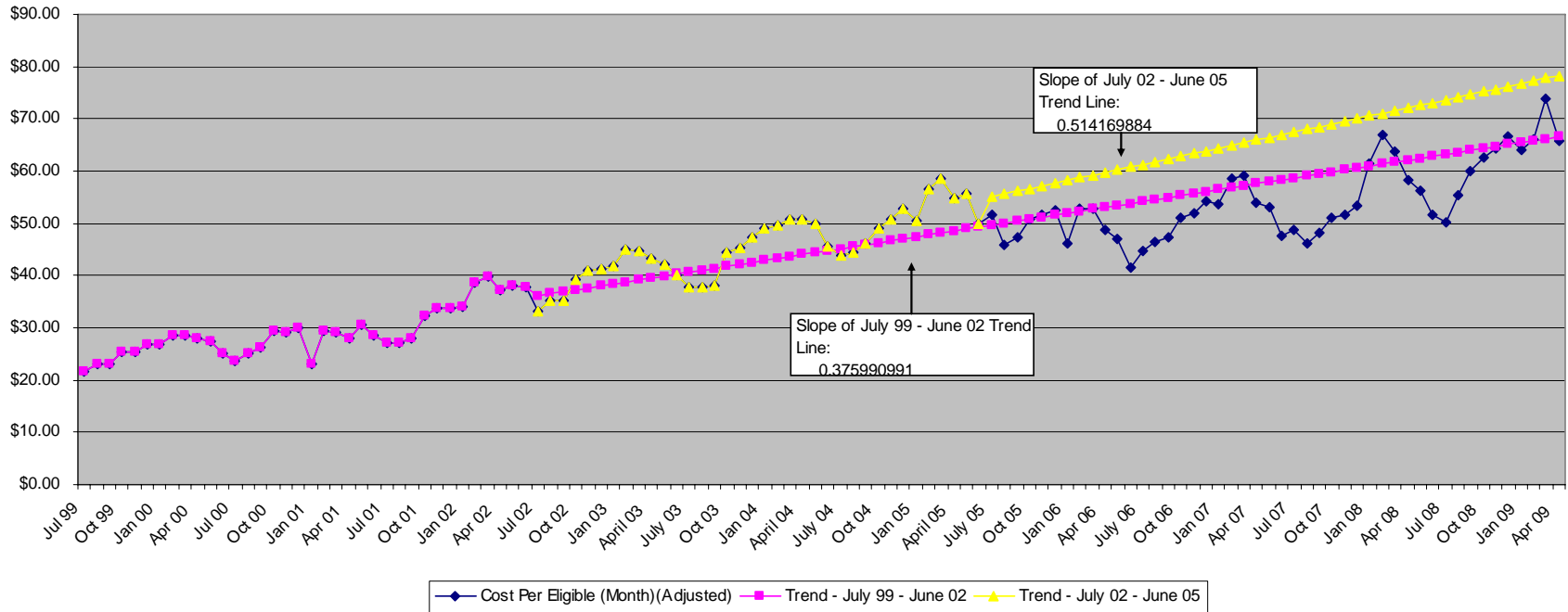
# And the Impact of Eligibility

Eligibles- Other\*



# Future Targeting of Program Performance

Other\* PMPM  
July 1999 - April 2009



# Off Trend Savings All Interventions

<b>Savings between Actual and the Trend Line July 99 - June 02</b>	
<b>July 2005 - April 2009</b>	<b>\$159,035,969</b>
<b>FY06 Savings</b>	<b>\$9,309,406</b>
<b>FY07 Savings</b>	<b>\$42,891,427</b>
<b>FY08 Savings</b>	<b>\$52,439,575</b>
<b>FY09 Savings</b>	<b>\$54,395,561</b>
<b>Savings between Actual and the Trend Line July 02 - June 05</b>	
<b>July 2005 - April 2009</b>	<b>\$279,832,396.52</b>
<b>FY06 Savings</b>	<b>\$30,747,805</b>
<b>FY07 Savings</b>	<b>\$72,547,189</b>
<b>FY08 Savings</b>	<b>\$87,090,712</b>
<b>FY09 Savings</b>	<b>\$89,446,690</b>

# Discussion

- Questions

Thank you

[George.L.Oestreich@dss.mo.gov](mailto:George.L.Oestreich@dss.mo.gov)

573.751.6961