

# Pharmacy Program Update

## Drug Utilization Review Board

April 20, 2011

Rhonda Driver, R.Ph

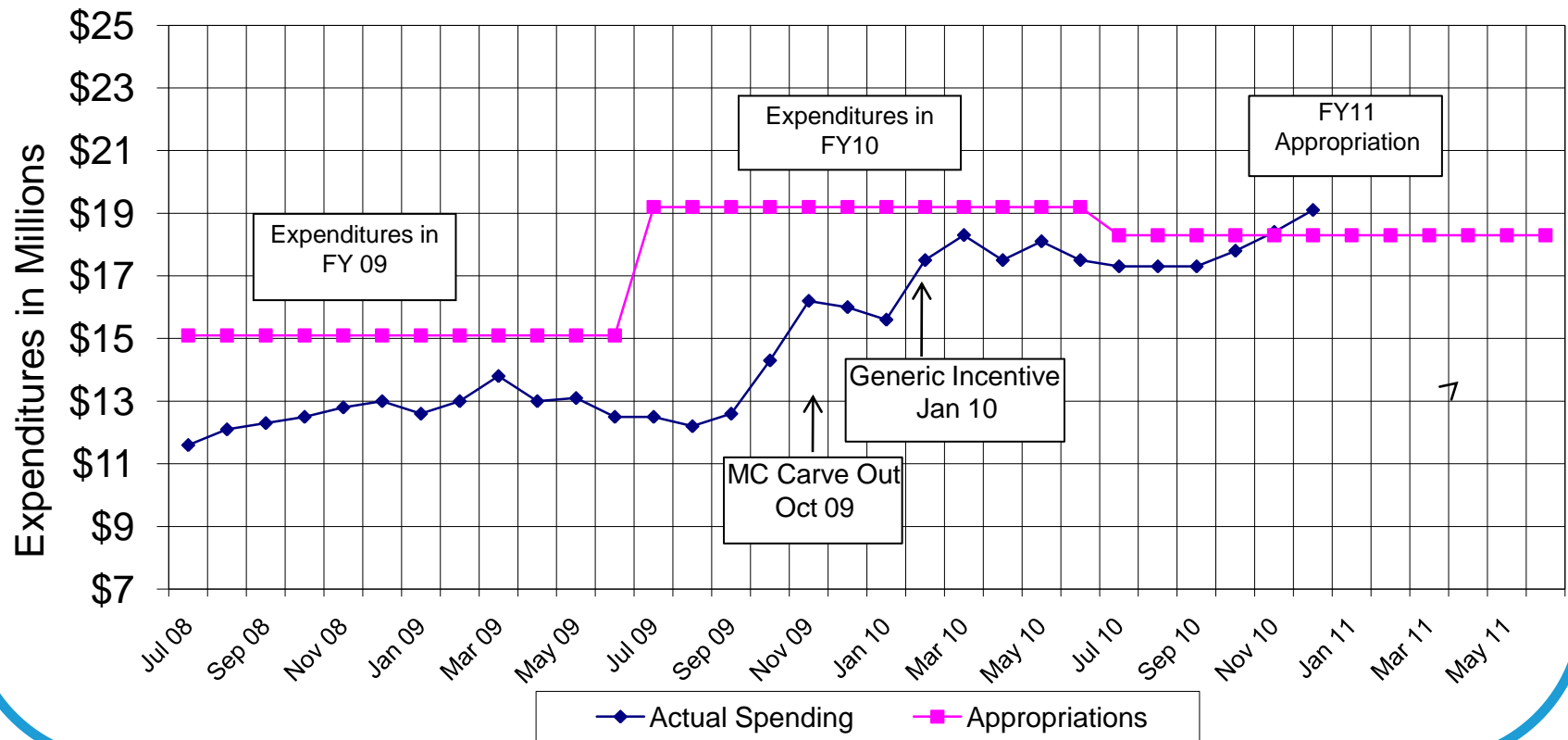
Director of Pharmacy and Clinical Services

MO HealthNet Division



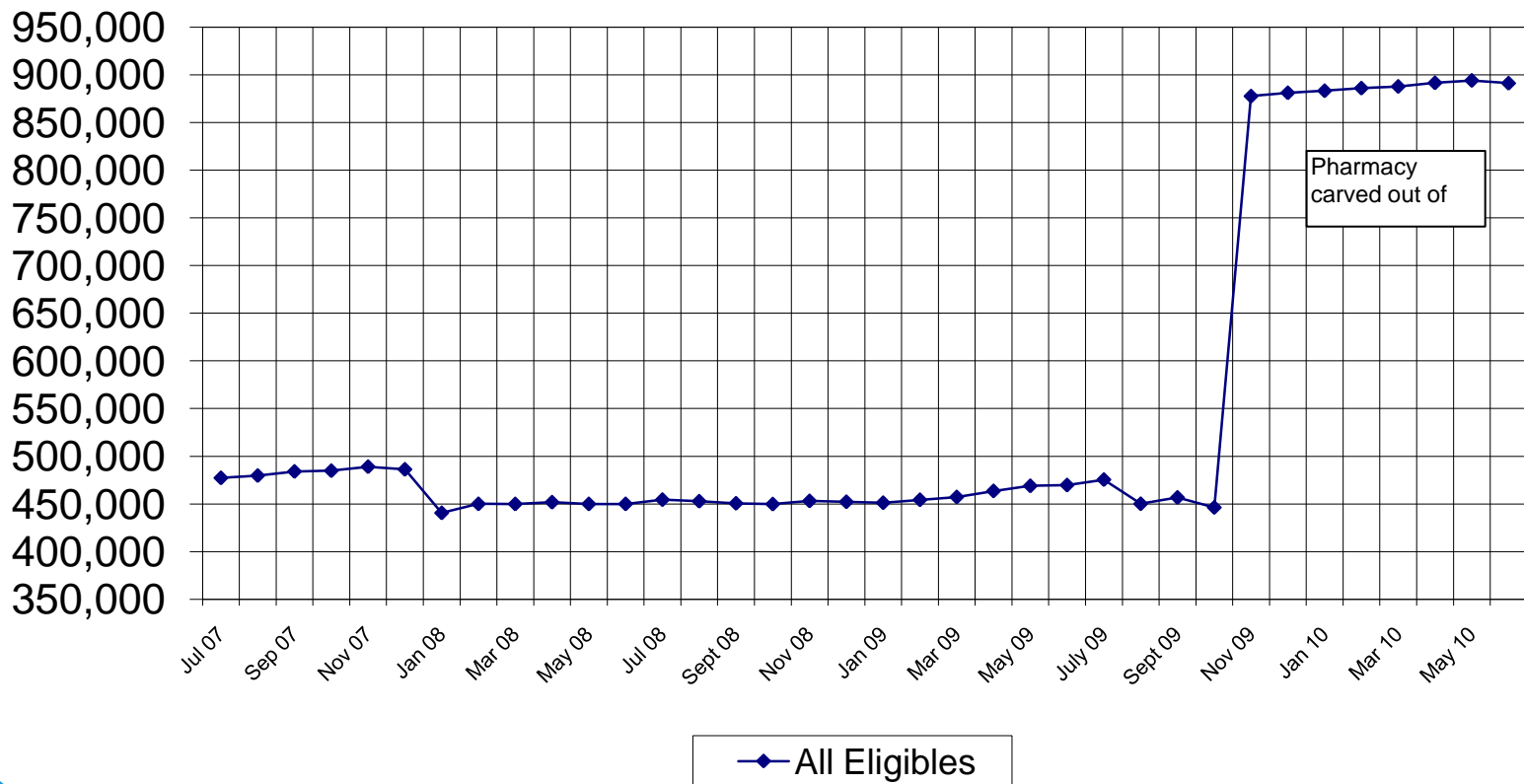
# Expenditures to Budget

## Pharmacy Cost Trends Average Weekly Expenditures



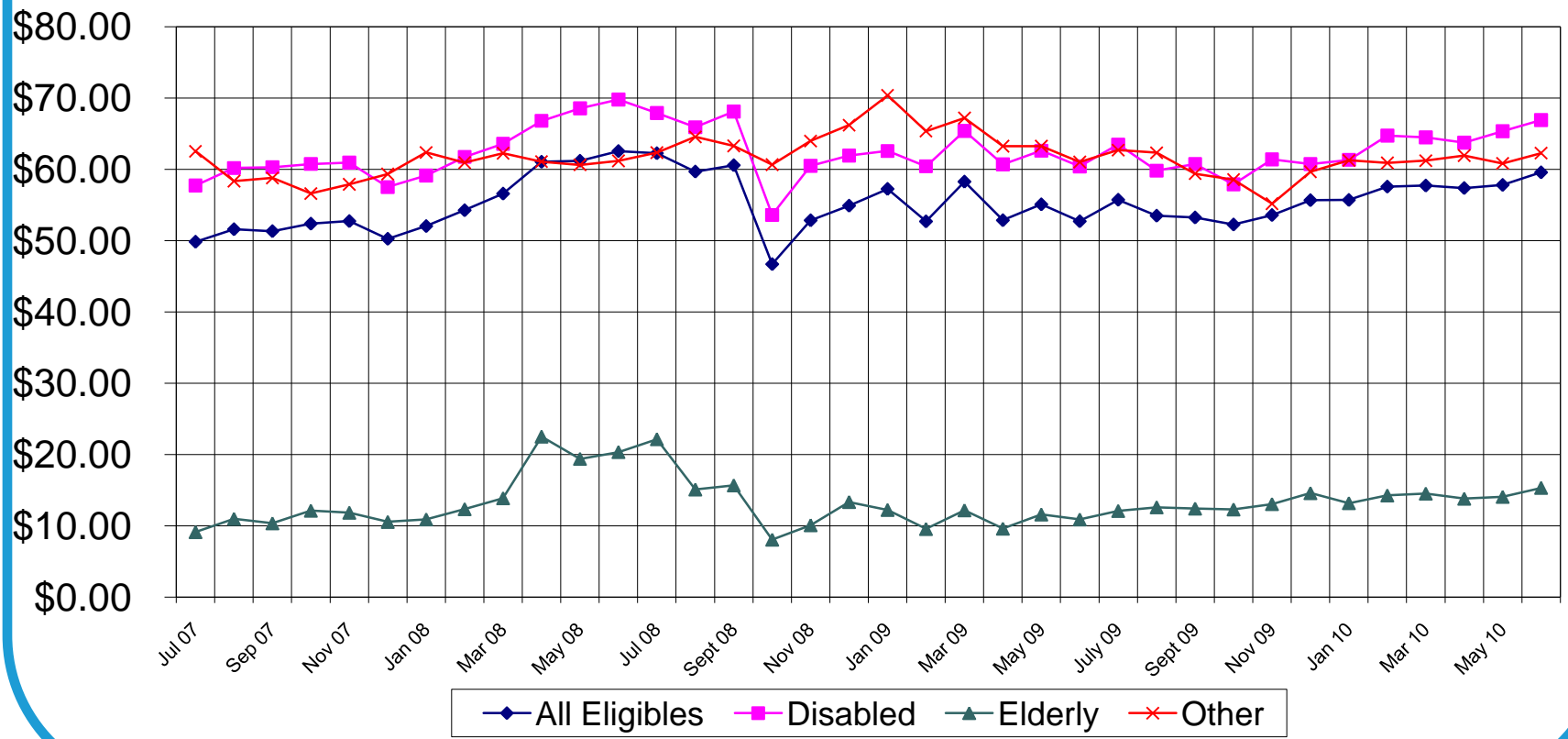
# All Participants

## Medicaid Eligibles With Duals July 07 thru June 10



# Average Prescription Cost

## Average Prescription Cost



# MoRx Program Sunset

- Authorized by SB 539 restructuring Missouri's Pharmacy Assistance Program from Senior Rx Program to MoRx
- Statutorily sunsets September 2011
- Current proposed legislation moving through the General Assembly (HB 196 and SB 80) to reauthorize the program through September 2016

# What is the MoRx Program

- Implemented January 2006
- Provides prescription drug assistance to Missourians by coordinating benefits with Medicare's (Part D) Prescription Drug Program.
- Today 26 states operate State Pharmacy Assistance Programs that coordinate benefits with Part D

# Who Qualifies Today

## ● **Dual Eligibles**

- Individuals who qualify for both Medicare and Medicaid; and
- Missouri resident; and
- Enrolled in a Medicare Part D Plan

## ● **Non-Dual Eligibles**

- Missouri resident; and
- Enrolled in a Medicare Part D Plan; and
- Meeting income requirements

# MoRx Income Requirements

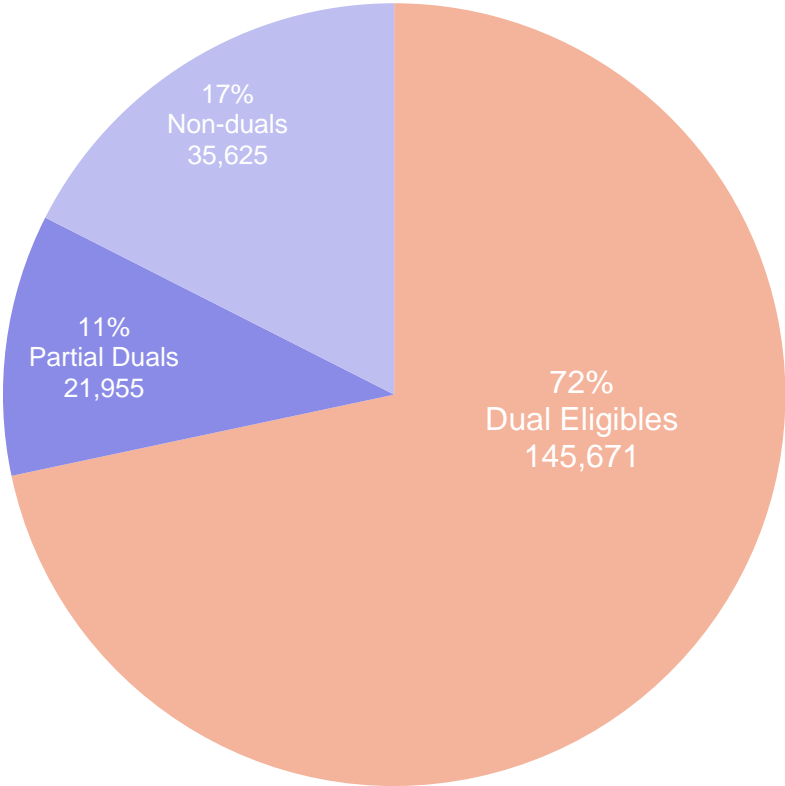
- Duals automatically enrolled
- Non-Duals Income Requirements
  - Single – annual gross household income of \$21,660 or less
  - Married – annual gross household of income of \$29,140 or less



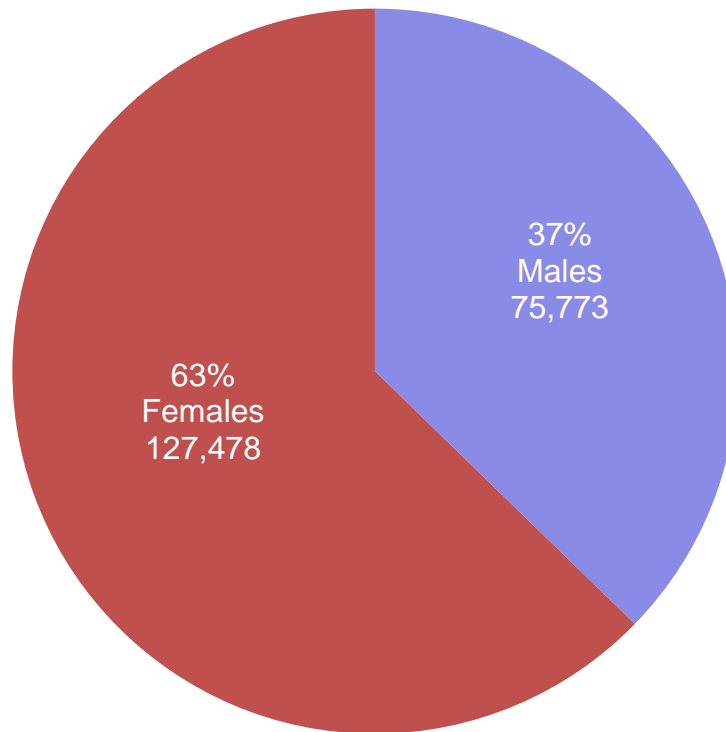
# Benefit Design Today

- MoRx pays for 50% of out-of-pocket costs on medications that are covered by a Medicare Part D plan, including:
  - 50% on deductible;
  - 50% on co-pays; and
  - 50% during the coverage gap and beyond

# MoRx Membership



# MoRx Members By Gender

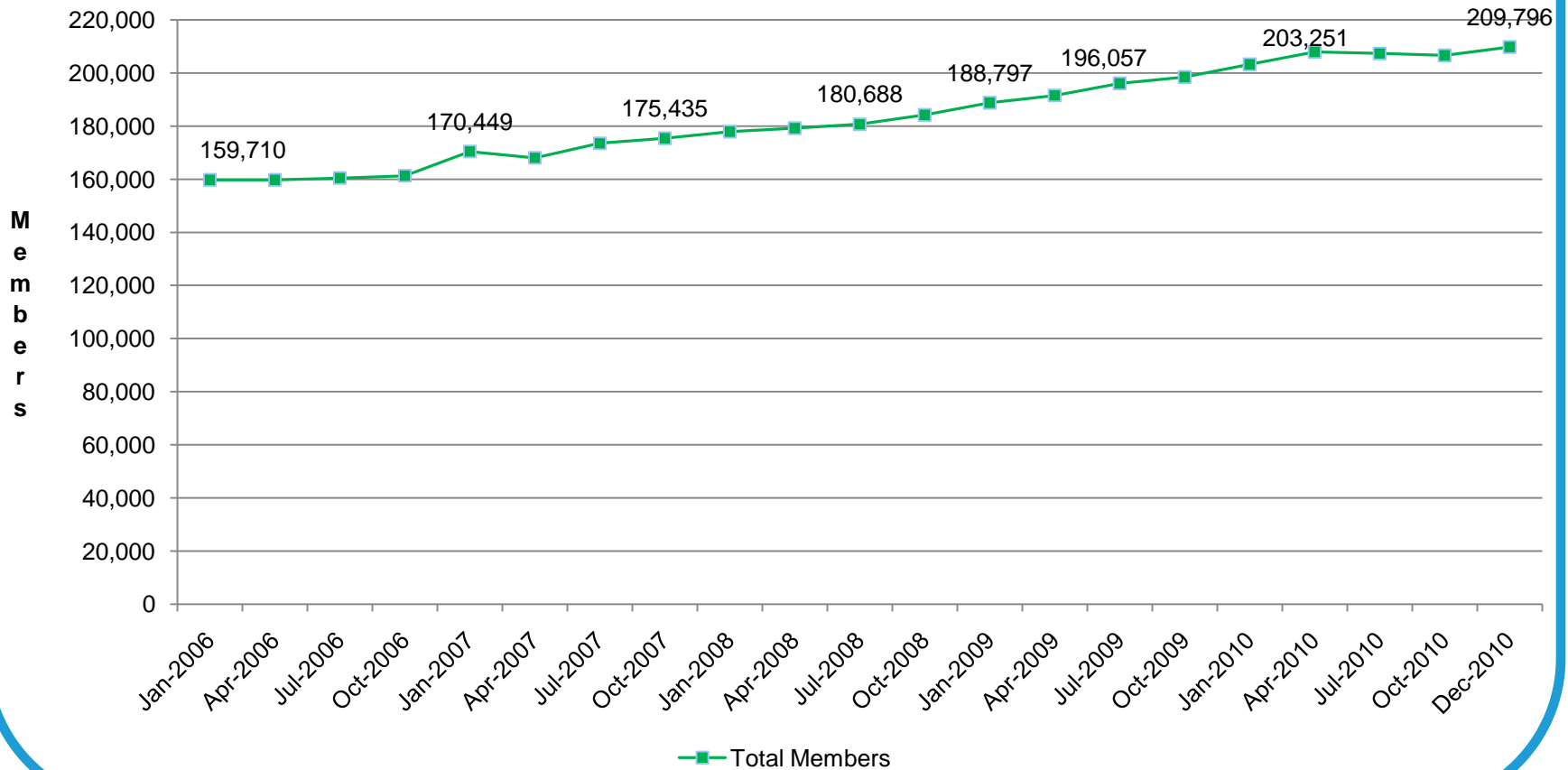


# Typical Member Profile

Type	Age	Gender	Chronic Conditions	MoRx Assistance
Non Dual	79	Female	Congestive heart failure, cholesterol, hypertension	Received \$384 in 2009
Partial Dual	62	Female	Hypertension, acid reflux disease (GERD), bronchitis and emphysema (COPD), chronic pain	Received \$18 in 2009
Full Dual	64	Female	Chronic pain, hypertension, peptic ulcer, diabetes	Received \$43 in 2009

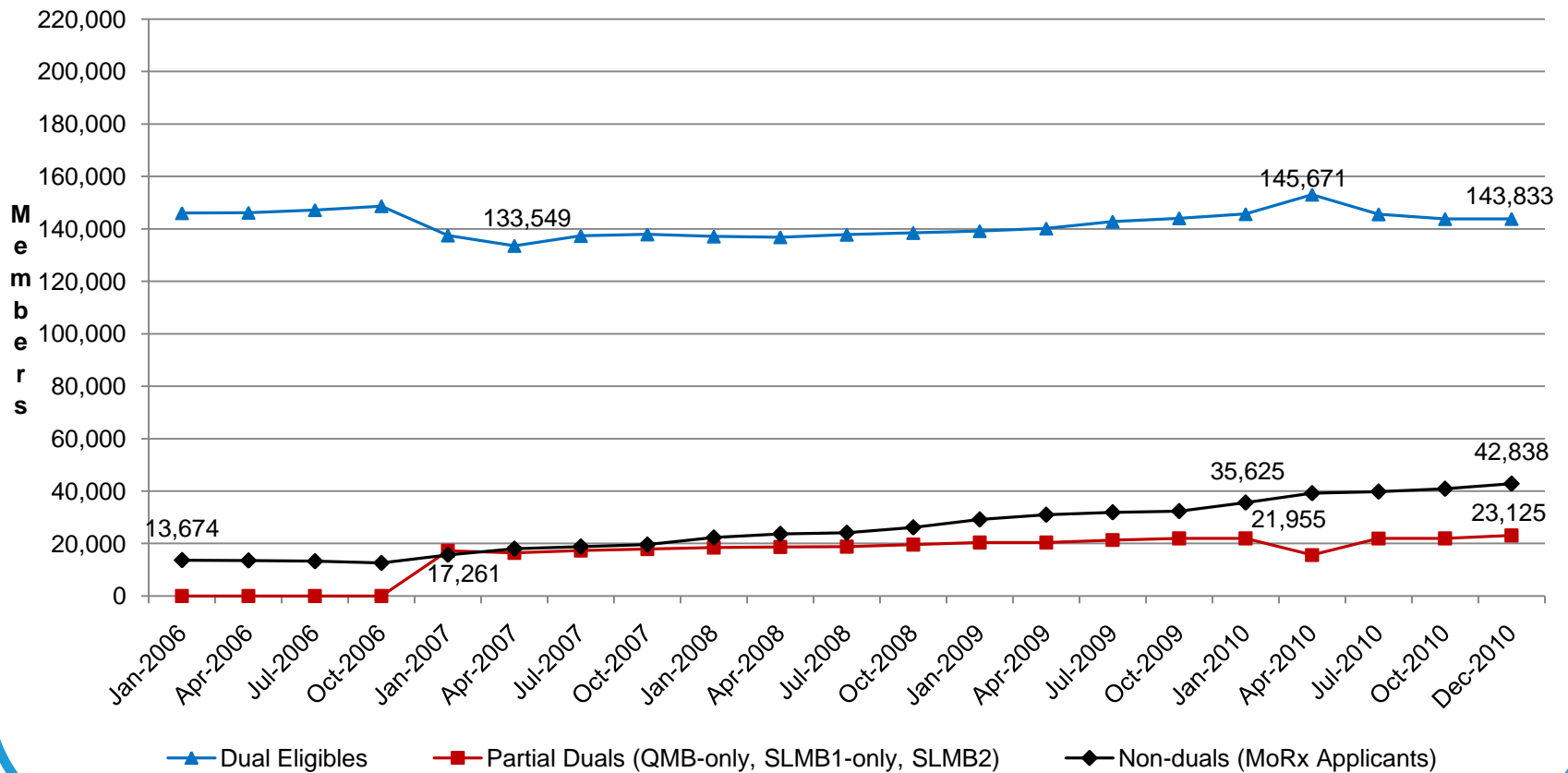
# MoRx Enrollment

Total MoRx Members



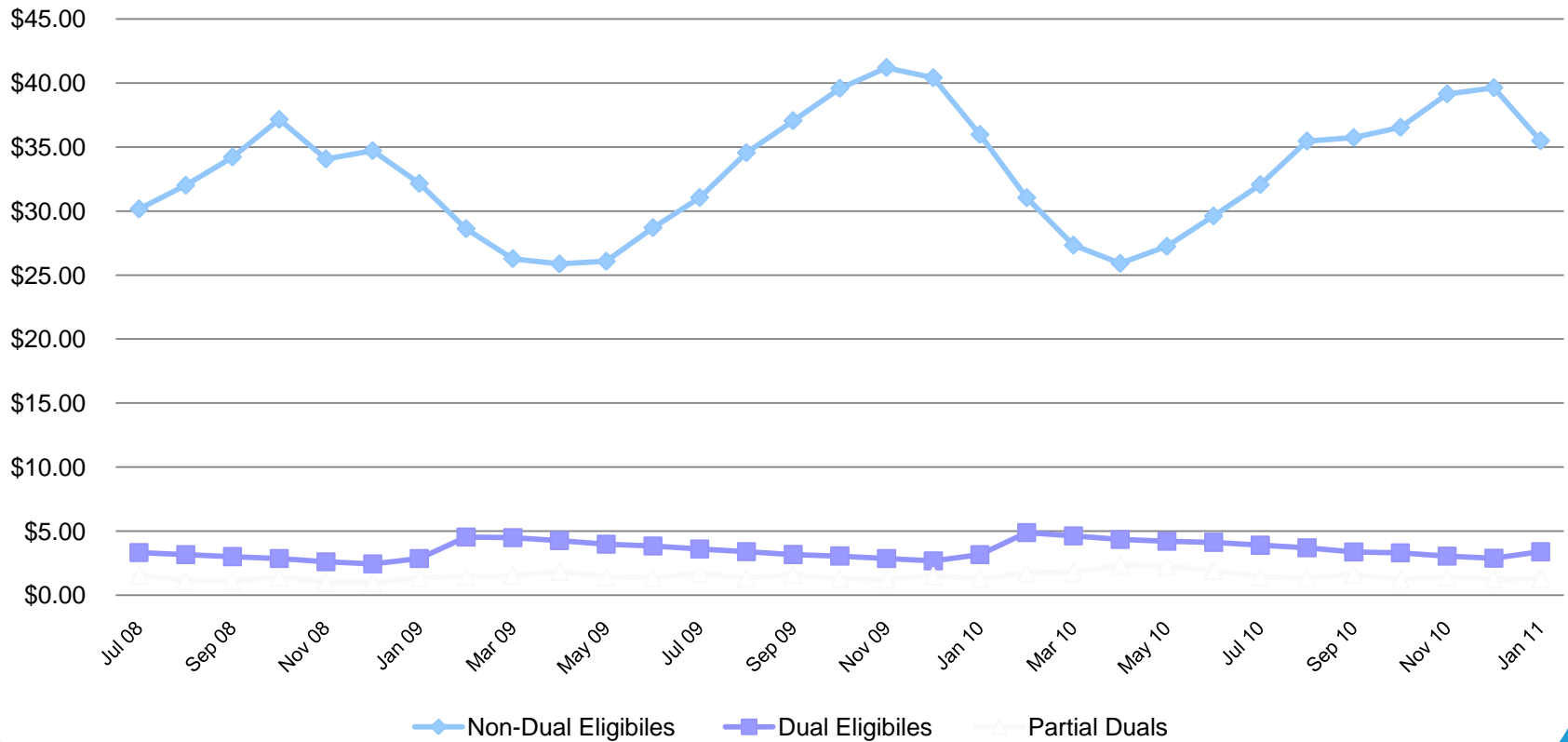
# MoRx Enrollment

## MoRx Enrollment by Eligibility Category



# MoRx Cost

## PMPM for MoRx, Non-Duals and Duals



# Affordable Care Act Impact

- In 2010, Part D enrollees with spending into the coverage gap receive \$250 rebate
- In 2011, Part D enrollees reaching the gap will receive 50% discount on total cost of brand name drugs in gap
- Over time Medicare will gradually phase-in subsidies in gap for brand and generic drugs
  - Reducing members co-insurance from 100% to 25% by 2020



# MoRx Mission

- **Helping Missourians Stay Healthy**
  - Providing affordable, high quality prescription drug coverage
  - Providing easy access to medically necessary medications
  - Assisting members with maintaining high quality of life and containing health care costs

# Discussion

- Questions?

