



CyberAccess Logging Information

From 4/1/2006 to 7/11/2011

Executed by at 7/11/2011 10:30:05 AM

Includes Data for Missouri

Month	User Logged In	Patient History Checked	Medical Rules Checked	Medical Help Tickets	Medical Pre-Certification Submitted	Lab Data Checked	Clinical Traits Checked	Drug Rules Checked	Drug Help Tickets
April 2006	896	1,726	0	0	0	0	0	185	31
May 2006	944	1,320	0	0	0	0	0	165	45
June 2006	755	1,016	0	0	0	0	0	86	29
July 2006	1,283	6,185	29	10	0	0	0	162	31
August 2006	2,001	4,226	179	21	0	0	0	326	60
September 2006	1,787	3,434	210	59	0	0	0	186	59
October 2006	1,938	3,614	186	46	0	0	0	236	69
November 2006	1,816	3,671	142	52	0	0	0	217	88
December 2006	1,641	2,484	91	19	0	0	0	210	69
January 2007	2,455	4,497	186	48	0	0	0	309	80
February 2007	2,711	4,514	144	42	3	0	0	255	90
March 2007	3,586	6,770	139	47	6	0	0	337	125
April 2007	3,876	7,107	199	60	10	0	0	380	137
May 2007	5,723	8,713	1,045	308	25	0	0	494	176
June 2007	6,029	8,489	1,400	397	203	0	0	412	136
July 2007	7,850	10,748	1,888	518	387	0	0	511	174
August 2007	10,265	15,371	2,519	574	706	0	0	733	259
September 2007	10,251	17,229	2,528	548	911	0	0	690	279
October 2007	12,414	18,892	2,765	650	1,241	0	0	725	320
November 2007	11,485	17,140	2,810	570	1,368	0	0	726	321
December 2007	10,164	16,170	2,476	444	1,303	0	0	586	256
January 2008	14,227	23,532	4,146	969	2,175	0	0	704	309
February 2008	14,559	24,885	5,246	633	2,514	0	0	682	263
March 2008	14,407	23,407	4,978	630	2,198	0	0	724	293

WARNING: This report is the private property of the State. Secure handling and disposal rules must be applied to this document at all times. You may not make unauthorized copies of this document or distribute the data contained herein to any other parties without the express, written permission of the State. Your failure to handle this document properly may result in severe civil and criminal penalties.



CyberAccess Logging Information

From 4/1/2006 to 7/11/2011

Executed by at 7/11/2011 10:30:05 AM

Includes Data for Missouri

E-Prescribed New Prescription	Faxed Prescription	Printed Prescription	User Logged in from APS	User Crossed to APS	Transfer to RBM	Activities / User
0	0	48	0	0	0	2.22
0	0	16	0	0	0	1.64
0	3	5	0	0	0	1.51
0	2	7	0	0	0	5.01
0	11	20	0	0	0	2.42
0	1	14	0	0	0	2.22
0	31	19	0	0	0	2.17
0	16	24	0	0	0	2.32
0	11	32	0	0	0	1.78
0	21	44	0	0	0	2.11
0	52	20	0	0	0	1.89
0	42	31	0	0	0	2.09
0	81	20	0	0	0	2.06
0	68	45	0	0	0	1.90
0	60	35	0	0	0	1.85
0	92	30	0	0	0	1.83
0	131	28	0	0	0	1.98
0	120	32	0	0	0	2.18
0	102	38	0	0	0	1.99
0	98	37	0	0	0	2.01
0	61	22	0	0	0	2.10
0	94	24	0	0	0	2.25
0	117	27	0	0	0	2.36
0	114	24	0	0	0	2.25

WARNING: This report is the private property of the State. Secure handling and disposal rules must be applied to this document at all times. You may not make unauthorized copies of this document or distribute the data contained herein to any other parties without the express, written permission of the State. Your failure to handle this document properly may result in severe civil and criminal penalties.



CyberAccess Logging Information

From 4/1/2006 to 7/11/2011

Executed by at 7/11/2011 10:30:05 AM

Includes Data for Missouri

Month	User Logged In	Patient History Checked	Medical Rules Checked	Medical Help Tickets	Medical Pre-Certification Submitted	Lab Data Checked	Clinical Traits Checked	Drug Rules Checked	Drug Help Tickets
April 2008	16,567	27,335	5,187	693	2,227	0	0	958	377
May 2008	15,710	25,810	5,075	585	2,004	0	0	786	333
June 2008	15,404	25,757	5,123	651	1,872	0	0	735	289
July 2008	18,493	29,567	5,437	565	1,836	50	0	782	310
August 2008	19,417	32,323	9,188	571	2,276	42	0	930	324
September 2008	23,991	36,932	9,923	655	2,771	35	0	943	402
October 2008	27,152	41,384	11,717	719	3,231	49	0	916	368
November 2008	22,839	35,214	9,578	578	2,774	27	0	761	328
December 2008	26,547	41,775	12,498	606	3,499	22	0	719	313
January 2009	29,435	46,789	13,655	679	4,271	25	0	1,069	463
February 2009	36,361	54,563	16,170	701	5,155	18	0	981	441
March 2009	50,738	76,870	18,033	755	5,655	20	0	976	417
April 2009	38,377	66,072	20,680	808	6,051	1	0	950	416
May 2009	30,595	49,576	14,981	660	4,349	18	0	827	350
June 2009	33,438	48,614	44,469	856	8,361	26	0	815	315
July 2009	41,336	77,137	76,063	877	13,220	16	0	799	341
August 2009	40,364	66,946	80,468	836	17,258	8	101	771	350
September 2009	43,956	75,857	78,437	851	19,477	132	168	899	353
October 2009	52,301	104,269	81,230	825	20,395	3	179	1,111	449
November 2009	48,697	98,120	69,820	748	17,645	23	129	1,005	472
December 2009	50,265	97,204	67,052	760	17,246	34	141	1,102	511
January 2010	48,945	88,468	59,563	773	14,343	31	154	983	499
February 2010	53,477	98,289	63,663	790	14,139	7	148	1,112	551
March 2010	56,519	107,128	77,834	1,021	16,794	41	222	1,415	692

WARNING: This report is the private property of the State. Secure handling and disposal rules must be applied to this document at all times. You may not make unauthorized copies of this document or distribute the data contained herein to any other parties without the express, written permission of the State. Your failure to handle this document properly may result in severe civil and criminal penalties.



CyberAccess Logging Information

From 4/1/2006 to 7/11/2011

Executed by at 7/11/2011 10:30:05 AM

Includes Data for Missouri

E-Prescribed New Prescription	Faxed Prescription	Printed Prescription	User Logged in from APS	User Crossed to APS	Transfer to RBM	Activities / User
0	131	22	0	0	0	2.23
0	130	38	0	0	0	2.21
0	122	30	0	0	0	2.24
0	81	25	0	0	0	2.09
0	197	25	0	0	0	2.36
0	99	23	0	0	0	2.16
0	121	26	0	0	0	2.16
0	136	33	0	0	0	2.16
0	95	23	0	0	0	2.24
0	130	29	0	0	0	2.28
0	115	39	0	0	0	2.15
0	134	33	0	206	0	2.03
1	120	22	0	189	0	2.48
10	93	23	5,255	161	0	2.49
17	89	27	5,416	226	0	3.27
15	90	18	3,062	171	0	4.16
1	74	14	3,413	181	0	4.22
2	130	23	3,203	167	0	4.09
0	112	23	2,845	202	0	4.05
0	125	25	2,655	171	0	3.92
17	118	19	3,191	155	0	3.73
6	102	16	2,396	136	0	3.42
1	97	31	2,630	174	0	3.40
0	177	33	2,635	238	0	3.69

WARNING: This report is the private property of the State. Secure handling and disposal rules must be applied to this document at all times. You may not make unauthorized copies of this document or distribute the data contained herein to any other parties without the express, written permission of the State. Your failure to handle this document properly may result in severe civil and criminal penalties.



CyberAccess Logging Information

From 4/1/2006 to 7/11/2011

Executed by at 7/11/2011 10:30:05 AM

Includes Data for Missouri

Month	User Logged In	Patient History Checked	Medical Rules Checked	Medical Help Tickets	Medical Pre-Certification Submitted	Lab Data Checked	Clinical Traits Checked	Drug Rules Checked	Drug Help Tickets
April 2010	53,974	93,940	69,362	885	14,831	43	2,264	1,195	527
May 2010	59,354	66,773	56,663	770	12,179	26	154	1,067	432
June 2010	71,698	53,555	57,938	876	12,143	38	141	1,066	466
July 2010	81,000	55,056	58,323	477	11,758	35	193	1,016	410
August 2010	99,775	56,619	69,691	219	13,175	38	142	1,229	502
September 2010	90,481	55,742	67,360	213	13,024	33	143	1,265	527
October 2010	94,732	59,666	67,865	202	13,254	34	147	1,335	543
November 2010	94,756	67,434	65,491	195	12,753	45	144	1,364	655
December 2010	92,651	67,159	59,685	192	11,742	29	127	1,106	546
January 2011	94,362	69,430	60,523	230	12,059	21	169	1,291	678
February 2011	88,615	58,916	59,189	196	11,661	55	147	1,148	555
March 2011	107,753	83,954	80,870	278	15,630	44	300	1,538	771
April 2011	97,886	74,149	68,001	243	12,711	33	175	1,411	734
May 2011	106,418	80,836	63,487	224	11,752	24	228	1,341	705
June 2011	120,994	80,694	62,088	253	11,305	29	299	1,277	713
July 2011	33,430	18,473	13,703	44	2,529	4	58	275	136
All Time Total	2,371,849	2,729,985	1,869,378	29,705	412,402	1,159	6,073	51,345	22,263

WARNING: This report is the private property of the State. Secure handling and disposal rules must be applied to this document at all times. You may not make unauthorized copies of this document or distribute the data contained herein to any other parties without the express, written permission of the State. Your failure to handle this document properly may result in severe civil and criminal penalties.



CyberAccess Logging Information

From 4/1/2006 to 7/11/2011

Executed by at 7/11/2011 10:30:05 AM

Includes Data for Missouri

E-Prescribed New Prescription	Faxed Prescription	Printed Prescription	User Logged in from APS	User Crossed to APS	Transfer to RBM	Activities / User
1	161	28	2,963	253	0	3.50
17	188	19	2,833	175	0	2.38
0	199	29	2,636	237	0	1.81
0	197	23	2,169	365	0	1.61
0	270	18	1,035	339	0	1.44
0	241	15	2	278	0	1.54
0	264	23	5	0	0	1.51
0	168	20	0	0	6,025	1.63
0	116	14	0	0	25,425	1.79
0	136	17	2	0	26,473	1.81
0	130	18	8	0	24,031	1.76
0	165	16	3	0	31,526	2.00
0	116	20	14	0	29,111	1.91
0	111	22	1	0	29,942	1.78
0	117	19	4	0	29,422	1.54
0	12	2	0	0	7,973	1.29
88	6,737	1,571	48,376	4,024	209,922	

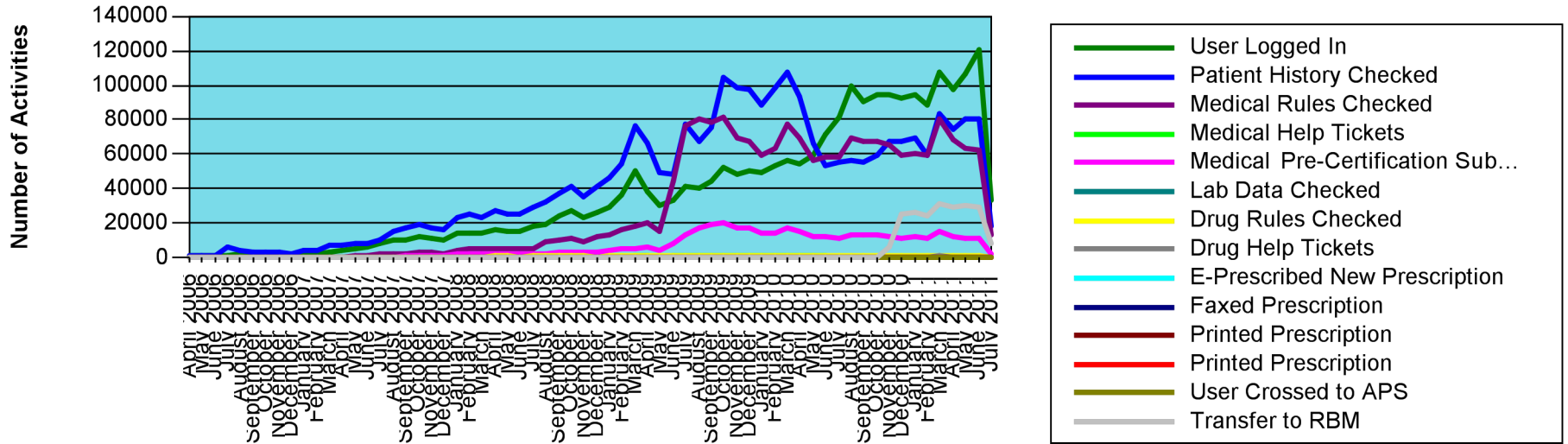


CyberAccess Logging Information

From 4/1/2006 to 7/11/2011

Executed by at 7/11/2011 10:30:05 AM

Includes Data for Missouri





CyberAccess® Reporting

CyberAccess Logging Information

From 4/1/2006 to 7/11/2011

Executed by at 7/11/2011 10:30:05 AM

Includes Data for Missouri