



CyberAccess Logging Information

From 4/1/2006 to 2/29/2012 11:59:57 PM

Executed by Tom Noble at 3/6/2012 3:59:03 PM

Includes Data for Missouri

Month	User Logged In	Patient History Checked	Medical Rules Checked	Medical Help Tickets	Medical Pre-Certification Submitted	Lab Data Checked	Clinical Traits Checked	Drug Rules Checked	Drug Help Tickets
April 2006	896	1,726	0	0	0	0	0	185	31
May 2006	944	1,320	0	0	0	0	0	165	45
June 2006	755	1,016	0	0	0	0	0	86	29
July 2006	1,283	6,185	29	10	0	0	0	162	31
August 2006	2,001	4,226	179	21	0	0	0	326	60
September 2006	1,787	3,434	210	59	0	0	0	186	59
October 2006	1,937	3,614	186	46	0	0	0	236	69
November 2006	1,816	3,671	142	52	0	0	0	217	88
December 2006	1,641	2,484	91	19	0	0	0	210	69
January 2007	2,455	4,497	186	48	0	0	0	309	80
February 2007	2,711	4,514	144	42	3	0	0	255	90
March 2007	3,586	6,770	139	47	6	0	0	337	125
April 2007	3,875	7,107	199	60	10	0	0	380	137
May 2007	5,716	8,706	1,045	308	25	0	0	494	176
June 2007	6,028	8,474	1,399	397	203	0	0	412	136
July 2007	7,844	10,748	1,888	518	387	0	0	511	174
August 2007	10,264	15,371	2,519	574	706	0	0	733	259
September 2007	10,241	17,197	2,526	548	909	0	0	690	279
October 2007	12,408	18,874	2,757	649	1,237	0	0	724	319
November 2007	11,474	17,074	2,801	570	1,364	0	0	726	321
December 2007	10,161	16,159	2,474	444	1,303	0	0	586	256
January 2008	14,216	23,514	4,142	969	2,172	0	0	704	309
February 2008	14,535	24,823	5,238	632	2,507	0	0	682	263
March 2008	14,397	23,398	4,977	629	2,198	0	0	724	293

WARNING: This report is the private property of the State. Secure handling and disposal rules must be applied to this document at all times. You may not make unauthorized copies of this document or distribute the data contained herein to any other parties without the express, written permission of the State. Your failure to handle this document properly may result in severe civil and criminal penalties.



CyberAccess Logging Information

From 4/1/2006 to 2/29/2012 11:59:57 PM

Executed by Tom Noble at 3/6/2012 3:59:03 PM

Includes Data for Missouri

E-Prescribed New Prescription	Faxed Prescription	Printed Prescription	User Logged in from APS	User Crossed to APS	Transfer to RBM	HCY Forms Completed	Activities / User
0	0	48	0	0	0		2.22
0	0	16	0	0	0		1.64
0	3	5	0	0	0		1.51
0	2	7	0	0	0		5.01
0	11	20	0	0	0		2.42
0	1	14	0	0	0		2.22
0	31	19	0	0	0		2.17
0	16	24	0	0	0		2.32
0	11	32	0	0	0		1.78
0	21	44	0	0	0		2.11
0	52	20	0	0	0		1.89
0	42	31	0	0	0		2.09
0	81	20	0	0	0		2.06
0	68	45	0	0	0		1.90
0	60	35	0	0	0		1.84
0	92	30	0	0	0		1.83
0	131	28	0	0	0		1.98
0	120	32	0	0	0		2.18
0	102	38	0	0	0		1.99
0	98	37	0	0	0		2.00
0	61	22	0	0	0		2.10
0	94	24	0	0	0		2.25
0	117	27	0	0	0		2.36
0	114	24	0	0	0		2.25

WARNING: This report is the private property of the State. Secure handling and disposal rules must be applied to this document at all times. You may not make unauthorized copies of this document or distribute the data contained herein to any other parties without the express, written permission of the State. Your failure to handle this document properly may result in severe civil and criminal penalties.



CyberAccess Logging Information

From 4/1/2006 to 2/29/2012 11:59:57 PM

Executed by Tom Noble at 3/6/2012 3:59:03 PM

Includes Data for Missouri

Month	User Logged In	Patient History Checked	Medical Rules Checked	Medical Help Tickets	Medical Pre-Certification Submitted	Lab Data Checked	Clinical Traits Checked	Drug Rules Checked	Drug Help Tickets
April 2008	16,546	27,318	5,184	693	2,225	0	0	958	377
May 2008	15,704	25,800	5,074	585	2,003	0	0	786	333
June 2008	15,392	25,744	5,118	650	1,869	0	0	735	289
July 2008	18,473	29,537	5,431	564	1,833	50	0	782	310
August 2008	19,413	32,317	9,187	571	2,275	42	0	930	324
September 2008	23,978	36,913	9,905	655	2,769	35	0	943	402
October 2008	27,128	41,350	11,692	719	3,227	49	0	916	368
November 2008	22,832	35,202	9,561	577	2,771	27	0	761	328
December 2008	26,540	41,765	12,468	604	3,494	22	0	719	313
January 2009	29,405	46,712	13,649	679	4,265	25	0	1,069	463
February 2009	36,357	54,556	16,155	700	5,152	18	0	981	441
March 2009	50,725	76,830	18,012	755	5,649	20	0	976	417
April 2009	38,370	66,050	20,670	808	6,046	1	0	950	416
May 2009	30,581	49,541	14,970	659	4,344	18	0	827	350
June 2009	33,436	48,614	44,457	856	8,360	26	0	815	315
July 2009	41,333	77,135	76,058	877	13,219	16	0	799	341
August 2009	40,361	66,940	80,463	836	17,255	8	101	771	350
September 2009	43,955	75,857	78,437	851	19,477	132	168	899	353
October 2009	52,301	104,269	81,230	825	20,395	3	179	1,111	449
November 2009	48,697	98,120	69,820	748	17,645	23	129	1,005	472
December 2009	50,263	97,204	67,036	760	17,245	34	141	1,102	511
January 2010	48,945	88,468	59,563	773	14,343	31	154	983	499
February 2010	53,477	98,289	63,662	789	14,139	7	148	1,112	551
March 2010	56,518	107,128	77,834	1,021	16,794	41	222	1,415	692

WARNING: This report is the private property of the State. Secure handling and disposal rules must be applied to this document at all times. You may not make unauthorized copies of this document or distribute the data contained herein to any other parties without the express, written permission of the State. Your failure to handle this document properly may result in severe civil and criminal penalties.



CyberAccess Logging Information

From 4/1/2006 to 2/29/2012 11:59:57 PM

Executed by Tom Noble at 3/6/2012 3:59:03 PM

Includes Data for Missouri

E-Prescribed New Prescription	Faxed Prescription	Printed Prescription	User Logged in from APS	User Crossed to APS	Transfer to RBM	HCY Forms Completed	Activities / User
0	131	22	0	0	0		2.23
0	130	38	0	0	0		2.21
0	122	30	0	0	0		2.25
0	81	25	0	0	0		2.09
0	197	25	0	0	0		2.36
0	99	23	0	0	0		2.16
0	121	26	0	0	0		2.16
0	136	33	0	0	0		2.16
0	95	23	0	0	0		2.24
0	130	29	0	0	0		2.28
0	115	39	0	0	0		2.15
0	134	33	0	205	0		2.03
1	120	22	0	189	0		2.48
10	93	23	5,255	161	0		2.49
17	89	27	5,416	226	0		3.27
15	90	18	3,062	171	0		4.16
1	74	14	3,413	181	0		4.22
2	130	23	3,203	167	0		4.09
0	112	23	2,845	202	0		4.05
0	125	25	2,655	171	0		3.92
17	118	19	3,191	155	0		3.73
6	102	16	2,396	136	0		3.42
1	97	31	2,630	174	0		3.40
0	177	33	2,635	238	0		3.69

WARNING: This report is the private property of the State. Secure handling and disposal rules must be applied to this document at all times. You may not make unauthorized copies of this document or distribute the data contained herein to any other parties without the express, written permission of the State. Your failure to handle this document properly may result in severe civil and criminal penalties.



CyberAccess Logging Information

From 4/1/2006 to 2/29/2012 11:59:57 PM

Executed by Tom Noble at 3/6/2012 3:59:03 PM

Includes Data for Missouri

Month	User Logged In	Patient History Checked	Medical Rules Checked	Medical Help Tickets	Medical Pre-Certification Submitted	Lab Data Checked	Clinical Traits Checked	Drug Rules Checked	Drug Help Tickets
April 2010	53,973	93,940	69,361	885	14,831	43	2,264	1,195	527
May 2010	59,354	66,773	56,663	770	12,179	26	154	1,067	432
June 2010	71,698	53,555	57,938	876	12,143	38	141	1,066	466
July 2010	80,993	55,056	58,323	477	11,758	35	193	1,016	410
August 2010	99,769	56,619	69,691	219	13,175	38	142	1,229	502
September 2010	90,465	55,741	67,348	213	13,023	33	143	1,265	527
October 2010	94,718	59,666	67,865	202	13,254	34	147	1,335	543
November 2010	94,736	67,434	65,483	195	12,751	45	144	1,364	655
December 2010	92,637	67,159	59,685	192	11,742	29	127	1,106	546
January 2011	94,334	69,430	60,523	230	12,059	21	169	1,291	678
February 2011	88,602	58,916	59,189	196	11,661	55	147	1,148	555
March 2011	107,753	83,954	80,862	278	15,628	44	300	1,538	771
April 2011	97,884	74,149	68,001	243	12,711	33	175	1,411	734
May 2011	106,418	80,836	63,487	224	11,752	24	228	1,341	705
June 2011	120,994	80,694	62,088	253	11,305	29	299	1,277	713
July 2011	118,937	74,354	57,743	199	10,443	23	216	1,234	653
August 2011	130,927	90,236	79,674	261	14,243	36	261	1,495	794
September 2011	112,449	77,450	71,099	223	13,330	41	230	1,408	784
October 2011	113,619	81,949	72,086	218	13,510	24	218	1,342	740
November 2011	106,453	78,151	69,206	207	13,050	65	239	1,518	841
December 2011	107,781	87,446	64,788	232	12,637	58	246	1,373	722
January 2012	120,027	91,724	70,023	237	13,689	112	275	1,469	781
February 2012	124,558	93,528	71,297	239	13,648	96	290	1,486	808
March 2012	5,469	3,938	3,789	10	764	3	9	81	34

WARNING: This report is the private property of the State. Secure handling and disposal rules must be applied to this document at all times. You may not make unauthorized copies of this document or distribute the data contained herein to any other parties without the express, written permission of the State. Your failure to handle this document properly may result in severe civil and criminal penalties.



CyberAccess Logging Information

From 4/1/2006 to 2/29/2012 11:59:57 PM

Executed by Tom Noble at 3/6/2012 3:59:03 PM

Includes Data for Missouri

E-Prescribed New Prescription	Faxed Prescription	Printed Prescription	User Logged in from APS	User Crossed to APS	Transfer to RBM	HCY Forms Completed	Activities / User
1	161	28	2,963	253	0		3.50
17	188	19	2,833	175	0		2.38
0	199	29	2,636	237	0		1.81
0	197	23	2,169	365	0		1.61
0	270	18	1,035	339	0		1.44
0	241	15	2	278	0		1.54
0	264	23	5	0	0		1.51
0	168	20	0	0	6,021		1.63
0	116	14	0	0	25,412		1.79
0	136	17	2	0	26,434		1.81
0	130	18	8	0	24,015		1.76
0	165	16	3	0	31,526		2.00
0	116	20	14	0	29,110		1.91
0	111	22	1	0	29,942		1.78
0	117	19	4	0	29,422		1.54
0	64	16	3	0	29,091		1.47
0	144	18	9	0	30,157		1.66
0	138	23	4	0	22,203		1.66
0	117	18	5	0	21,352		1.69
0	139	27	3	0	19,234		1.72
0	132	25	3	0	19,130		1.74
0	98	23	8	0	21,253		1.67
0	83	15	7	0	19,976		1.62
0	3	0	0	0	813		1.73

WARNING: This report is the private property of the State. Secure handling and disposal rules must be applied to this document at all times. You may not make unauthorized copies of this document or distribute the data contained herein to any other parties without the express, written permission of the State. Your failure to handle this document properly may result in severe civil and criminal penalties.

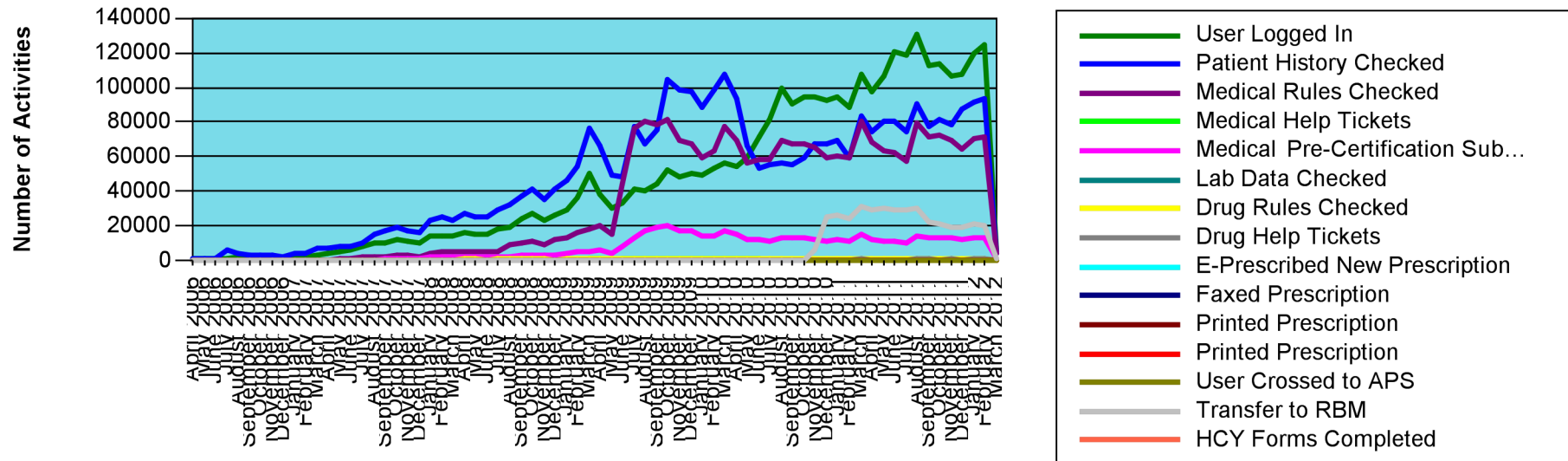
CyberAccess Logging Information

From 4/1/2006 to 2/29/2012 11:59:57 PM

Executed by Tom Noble at 3/6/2012 3:59:03 PM

Includes Data for Missouri

All Time Total 3,296,969 3,402,869 2,424,995 31,499 516,982 1,634 8,043 62,709 28,407





CyberAccess® Reporting

CyberAccess Logging Information

From 4/1/2006 to 2/29/2012 11:59:57 PM

Executed by Tom Noble at 3/6/2012 3:59:03 PM

Includes Data for Missouri

88	7,663	1,736	48,418	4,023	387,925
-----------	--------------	--------------	---------------	--------------	----------------