

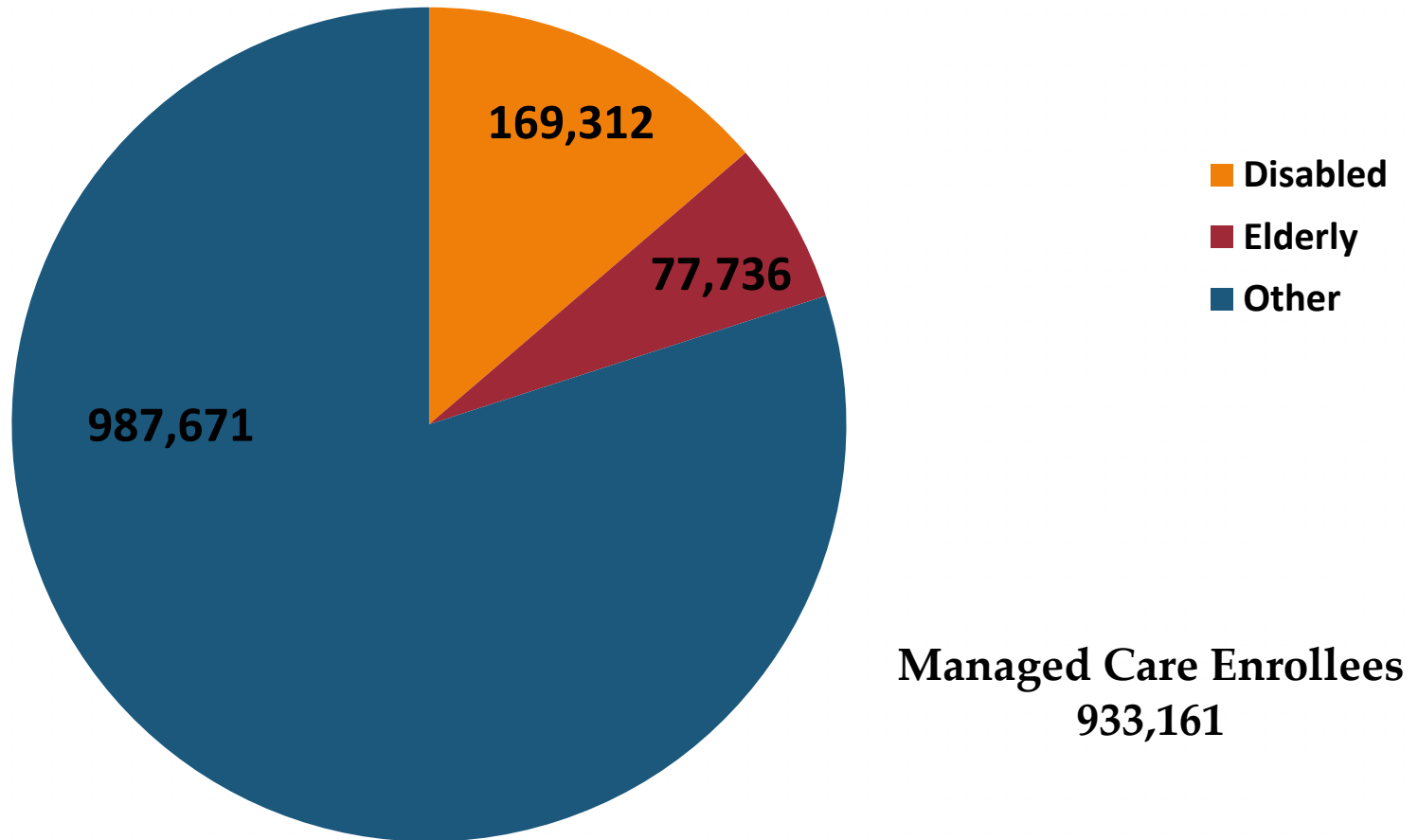


MO HEALTHNET PHARMACY PROGRAM AND BUDGET UPDATE

**RARE DISEASE ADVISORY COMMITTEE MAY 10, 2022
JOSH MOORE, PHARM D-DIRECTOR OF PHARMACY**

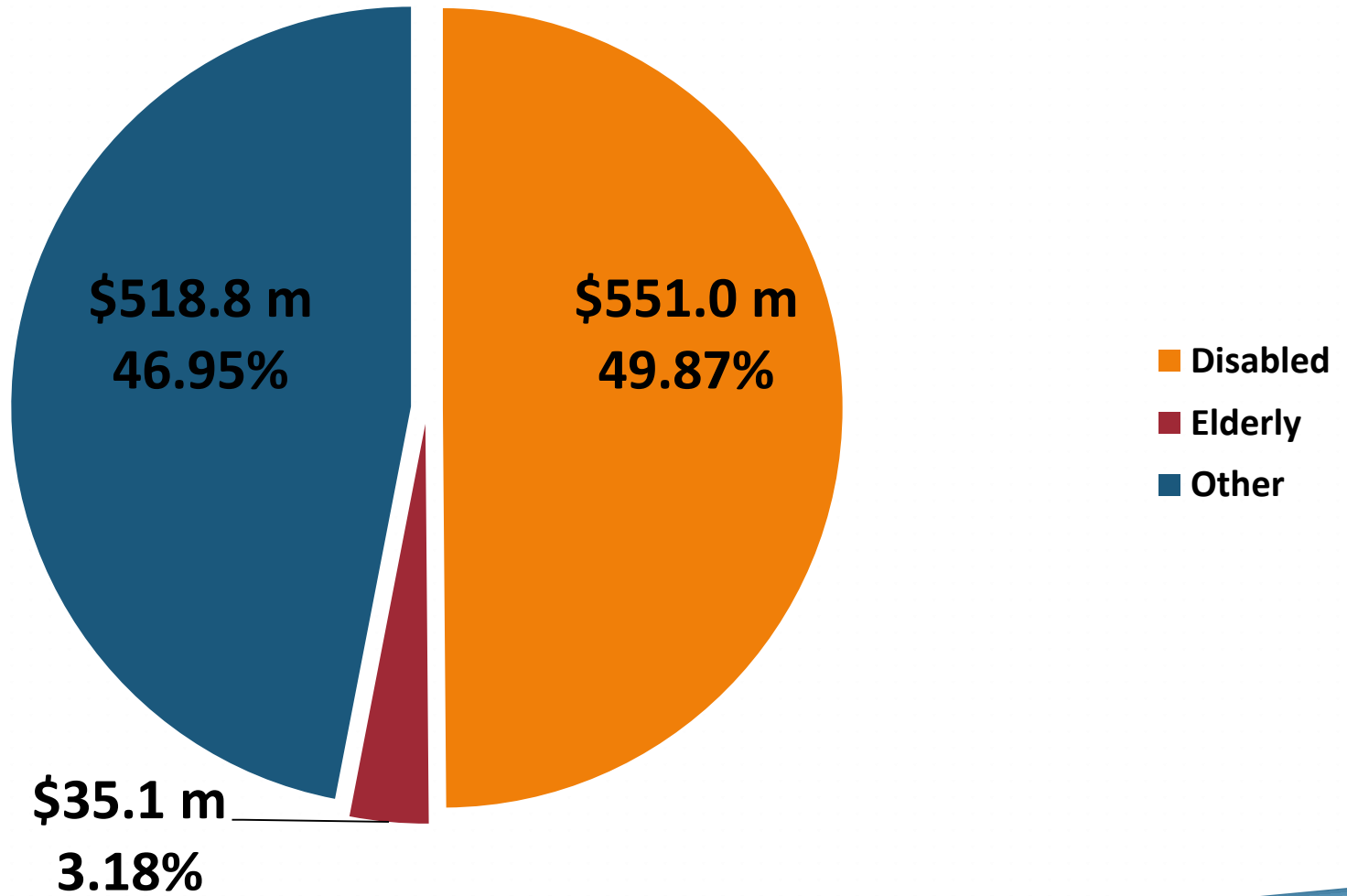
Eligibles by Group July 2021-March 2022

Total Eligibles 1,234,719

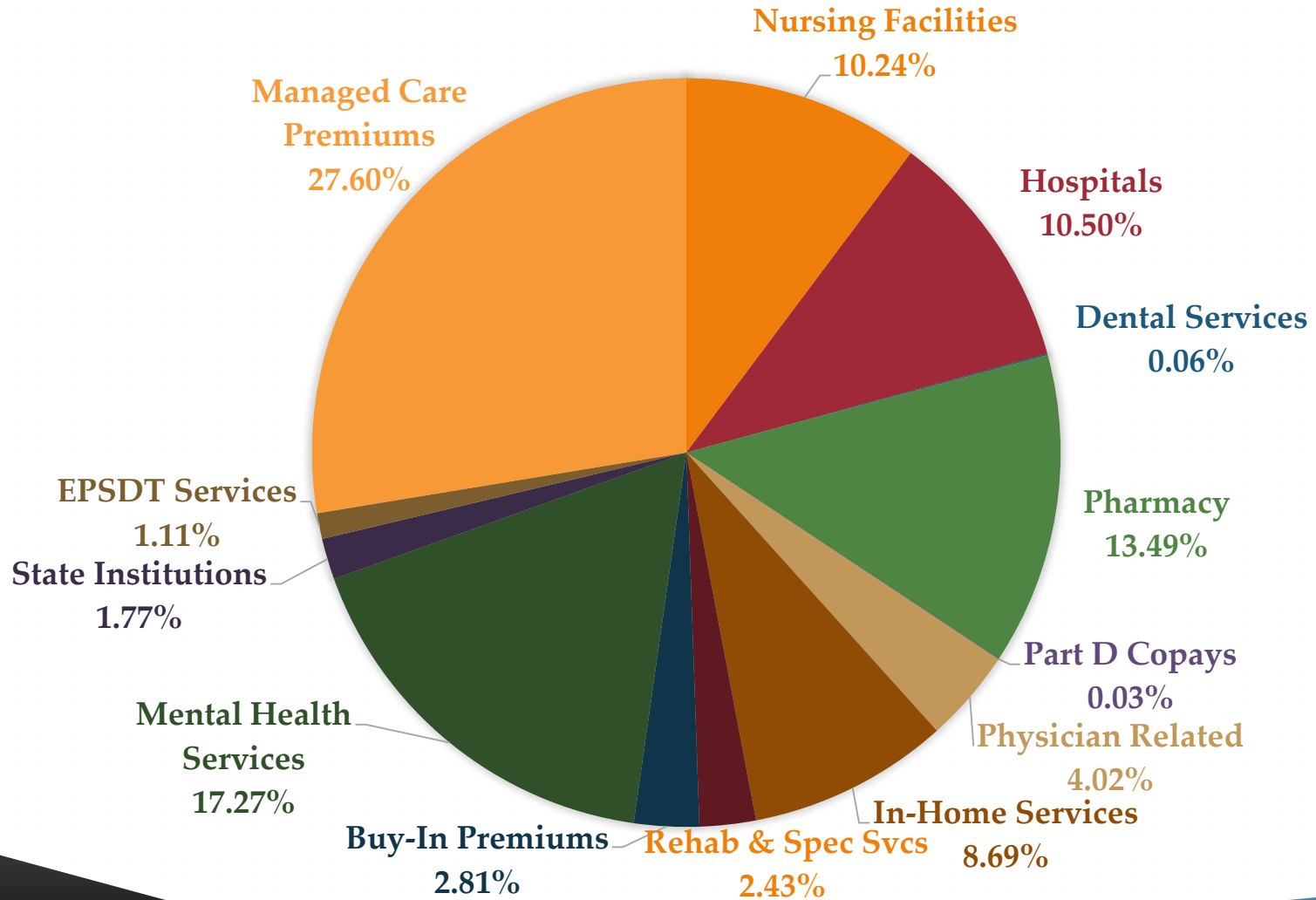


Expenditures by Enrollment Group: July 2021-March 2022

Total Spend \$1,104,962,627



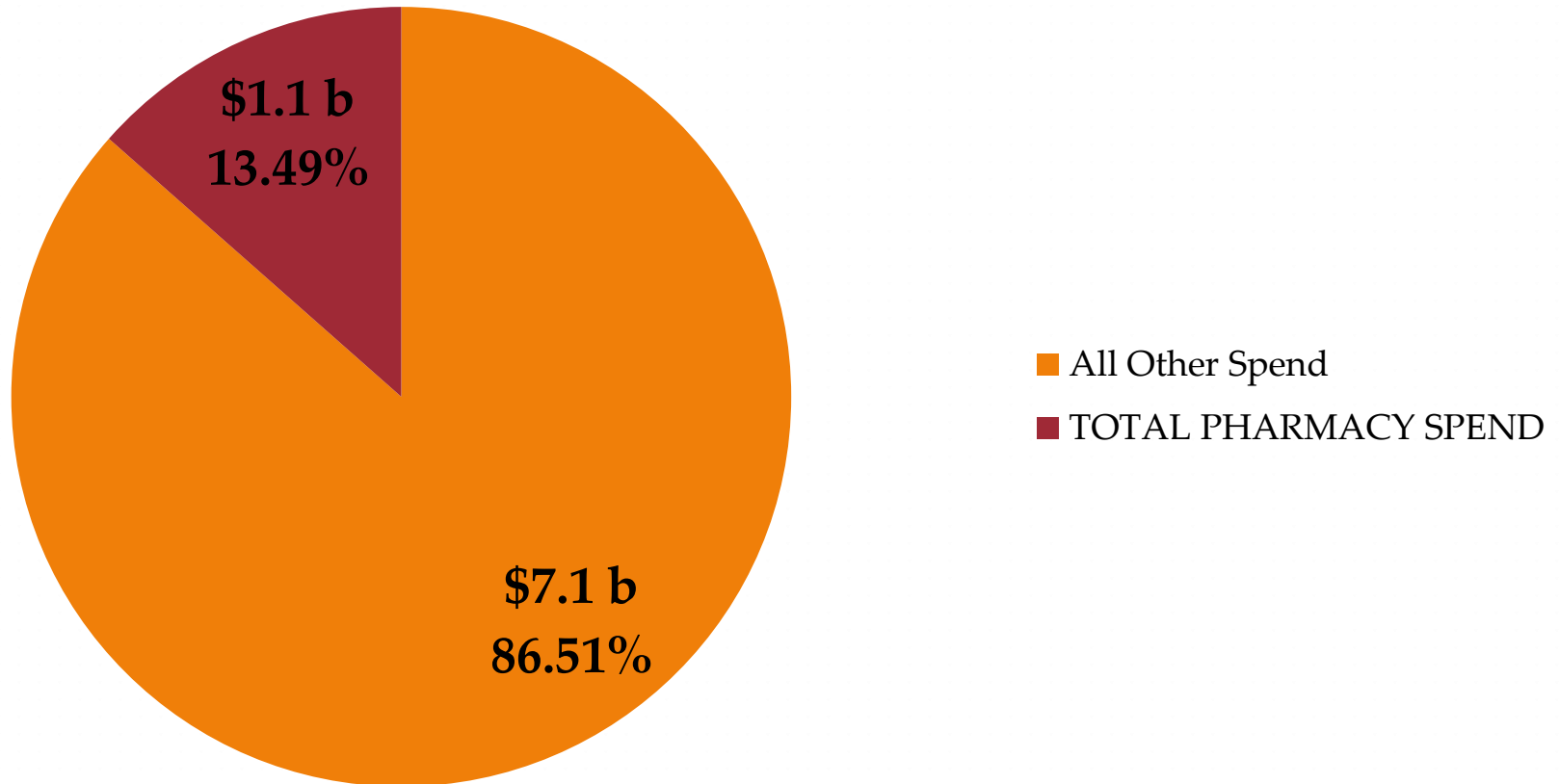
JULY 2021-MARCH 2022 MO HEALTHNET EXPENDITURES BY SERVICE



FY22 Pharmacy Spend vs Total Medicaid Spend

Total Spend \$8,192,173,940

July 2021-Mar 2022

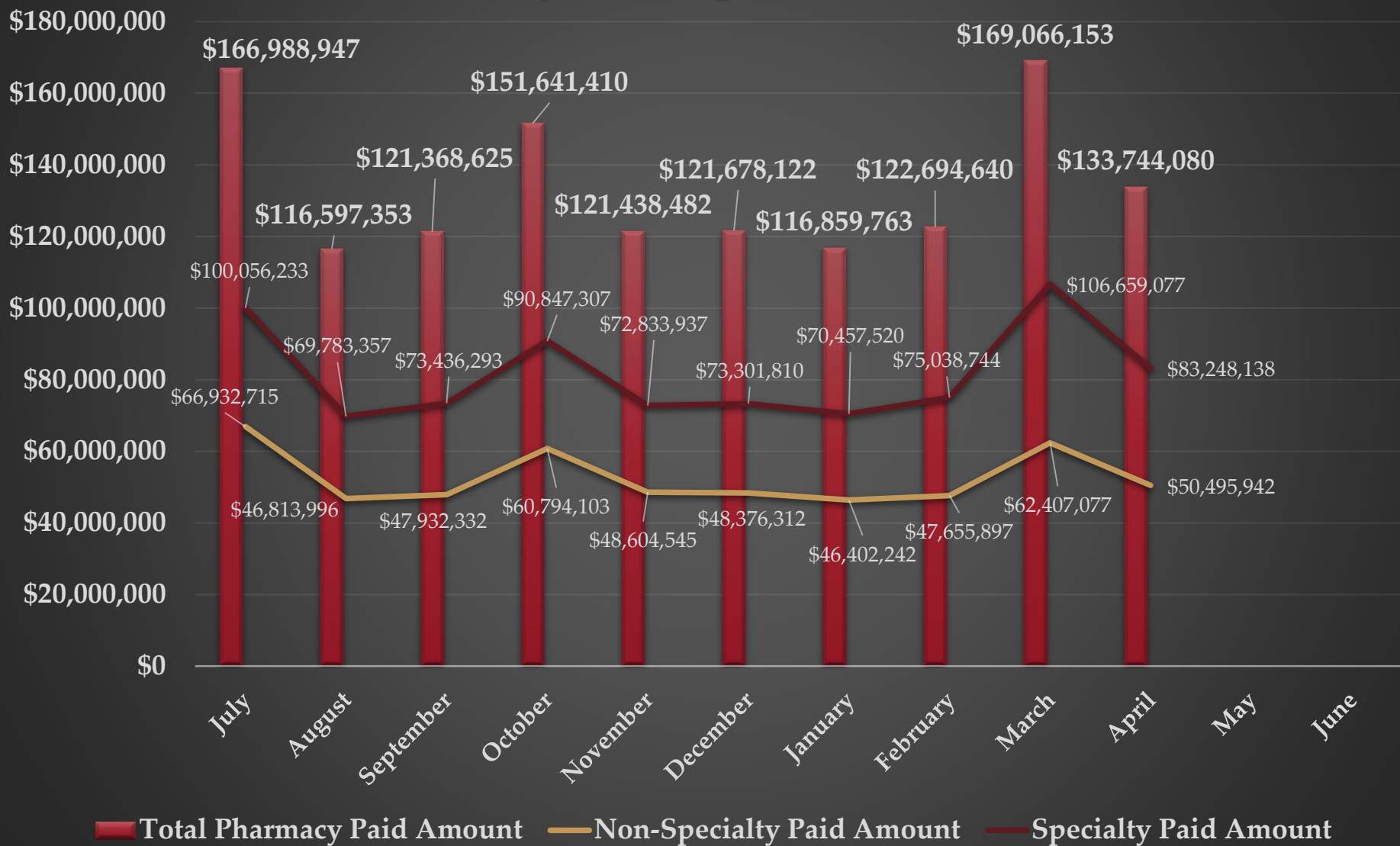




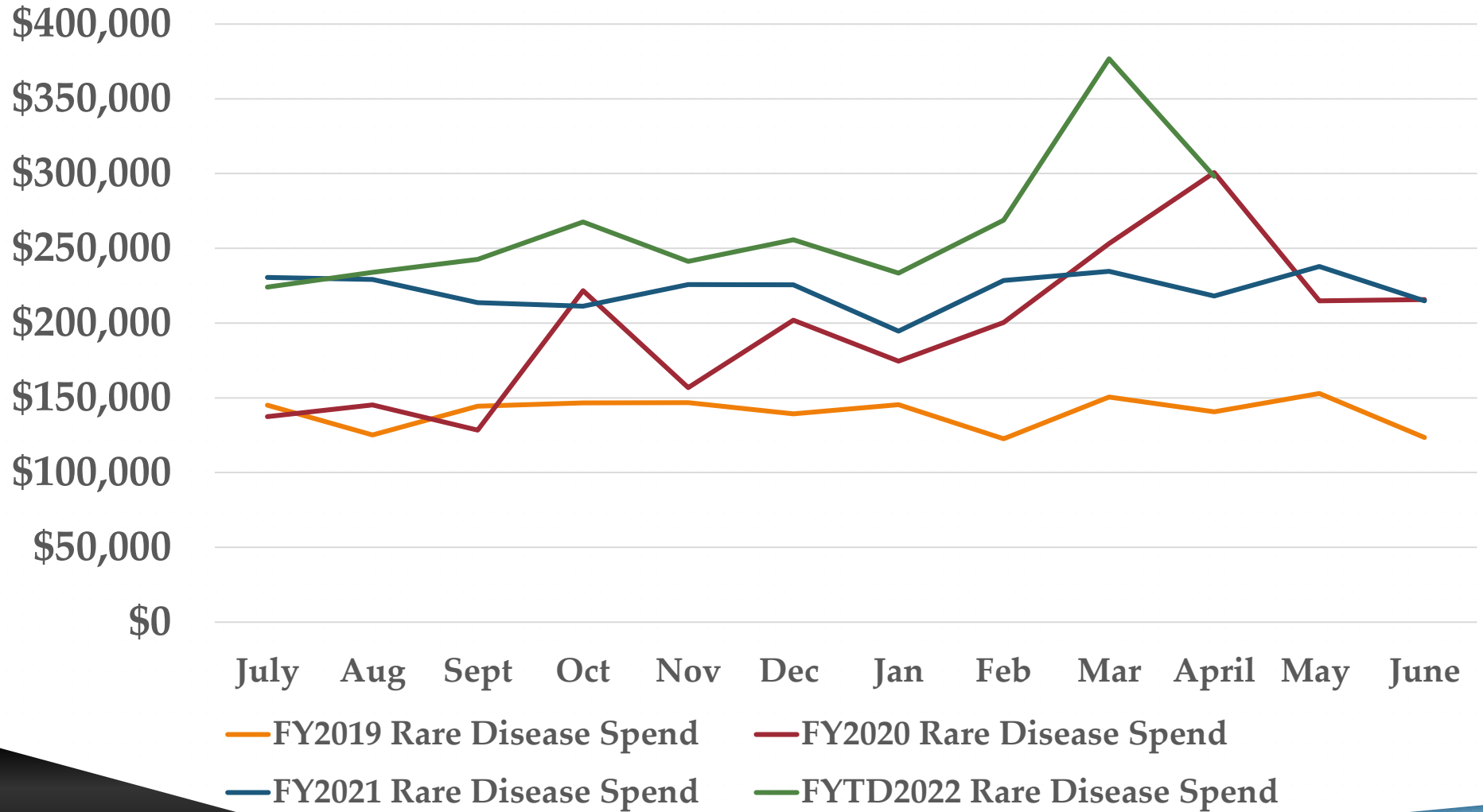
	July 21	Aug 21	Sept 21	Oct 21	Nov 21	Dec 21	Jan 22	Feb 22	Mar 22	Apr 22
Participants				14,005	20,927	53,643	62,297	70,909	83,686	
Expenditures				\$222,691	\$1,528,271	\$2,484,187	\$3,755,745	\$5,419,339	\$9,933,410	
Claim Count				6,229	30,831	43,022	62,446	78,515	127,890	

Pharmacy Expenditures FY22

July 2021-April 2022



FY2019-FYTD 2022 Rare Disease Expenditures Per Day



TRIKAFTA EXPENDITURES FYTD 2022

