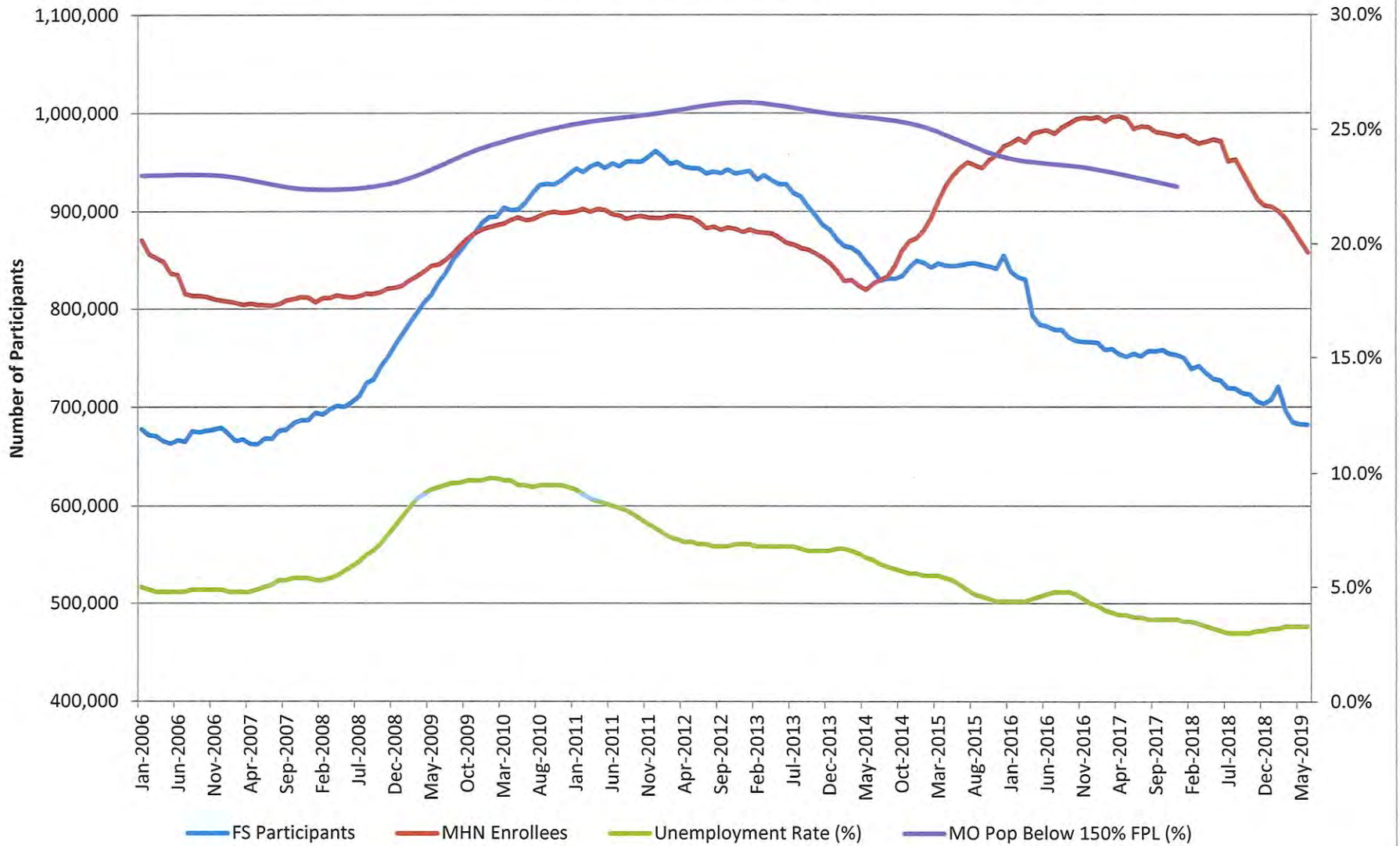
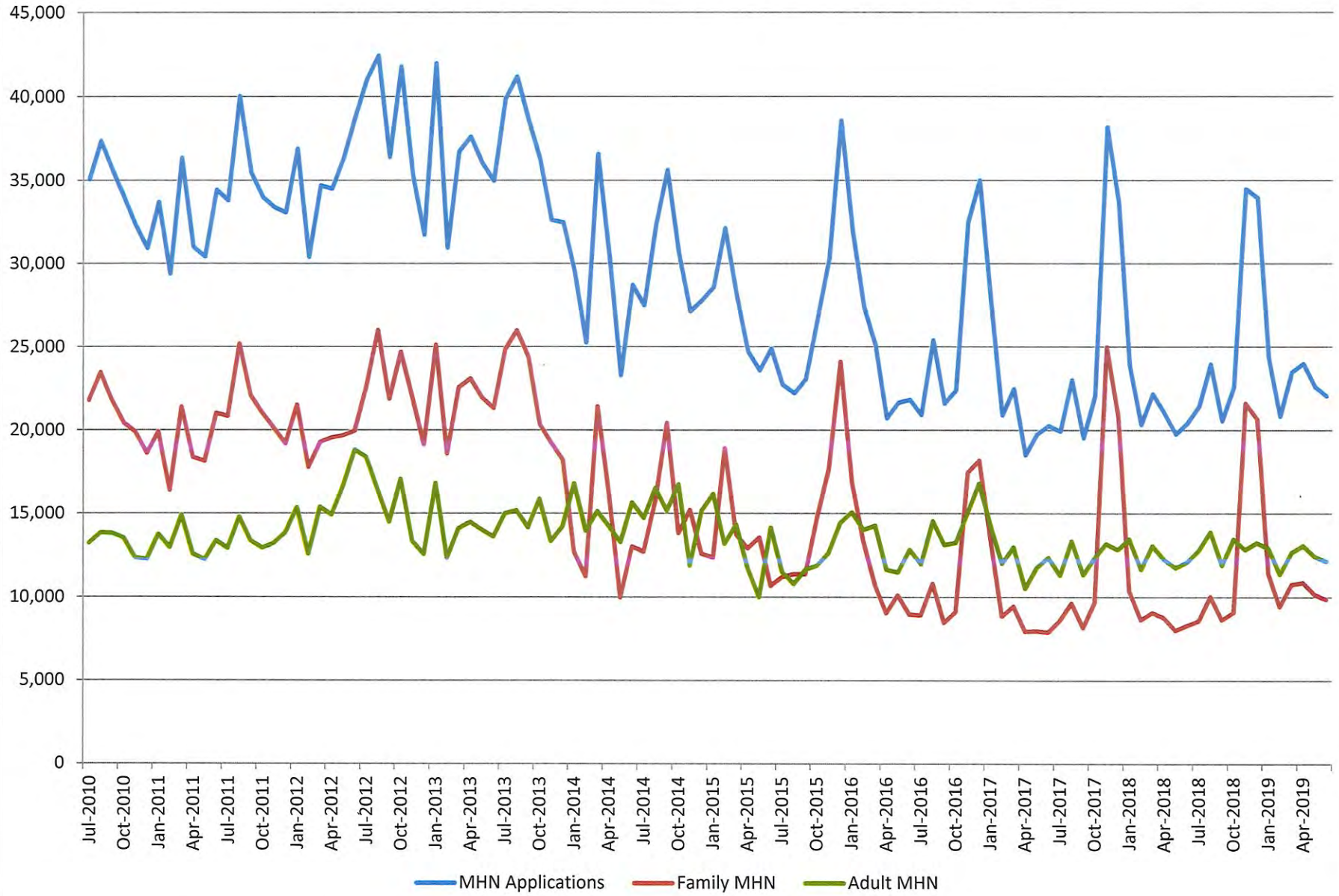


## SNAP (Food Stamp) and MO HealthNet Populations, Unemployment, and Poverty Rate Comparisons Jan 2006 - Jun 2019

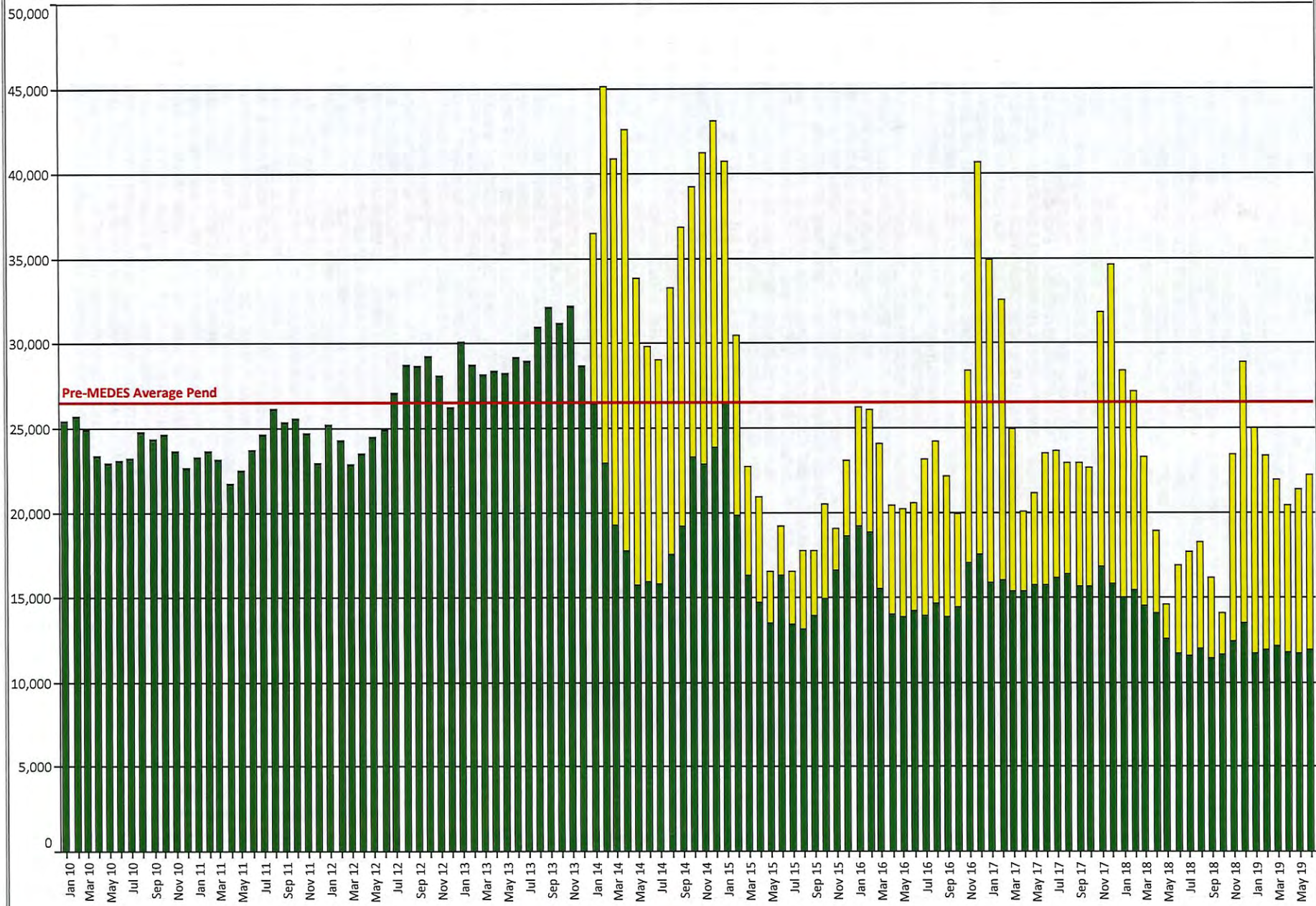


# MO HealthNet Applications July 2010 to June 2019





# Pended Medicaid Applications

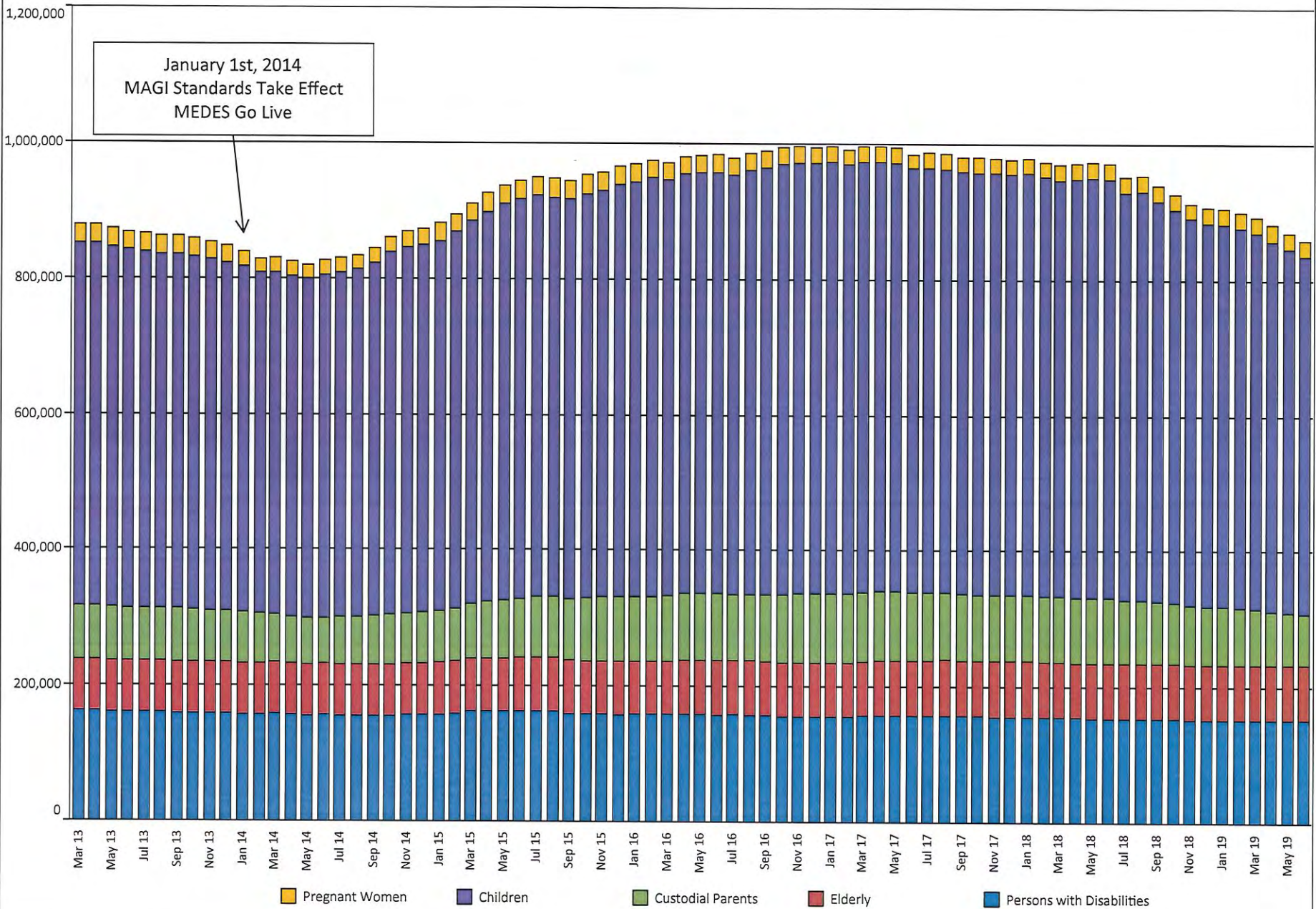


Created by the Risk Analysis Unit

MEDES Pend FAMILIS Pend



# Medicaid Caseload



Created by the Risk Analysis Unit



	Participants as of June 2010	Participants as of June 2014	Participants as of June 2019	Change Since June 2010	Current Income Eligibility Maximums <small>(Show as a Percentage of Poverty Level)</small>
Children	538,175	504,582	527,043	(11,132)	300%*
Persons with Disabilities	165,185	156,595	151,709	(13,476)	85%
Custodial Parents	81,660	67,829	74,293	(7,367)	TANF level <small>(approximately 19%)</small>
Seniors	77,917	75,122	81,420	3,503	85%
Pregnant Women	28,254	21,846	23,612	(4,642)	185%
<b>Total</b>	<b>891,191</b>	<b>825,974</b>	<b>858,077</b>	<b>(33,114)</b>	
Women's Health Services	49,901	67,616	49,303	(598)	185%
Managed Care Enrollment	421,756	388,857	596,649	174,893	

\*Families with gross income above 150% of the federal poverty level are required to pay a monthly premium for coverage of their children.  
 Source: Missouri Department of Social Services, Family Support Division/MO HealthNet Division, Monthly Management Report

## Charts Legend

**DSS:** MO Department of Social Services (i.e. General MAGI applications)

**FAMIS:** Family Assistance Information Management Systems

**FFM:** Federally Facilitated Marketplace

**MAGI:** Modified Adjusted Gross Income

**MEDES:** Missouri Eligibility Determination and Enrollment System

**MHABD (ADM):** MO HealthNet Eligibility for Persons Who are Aged (age 65 and over), Blind, or Disabled