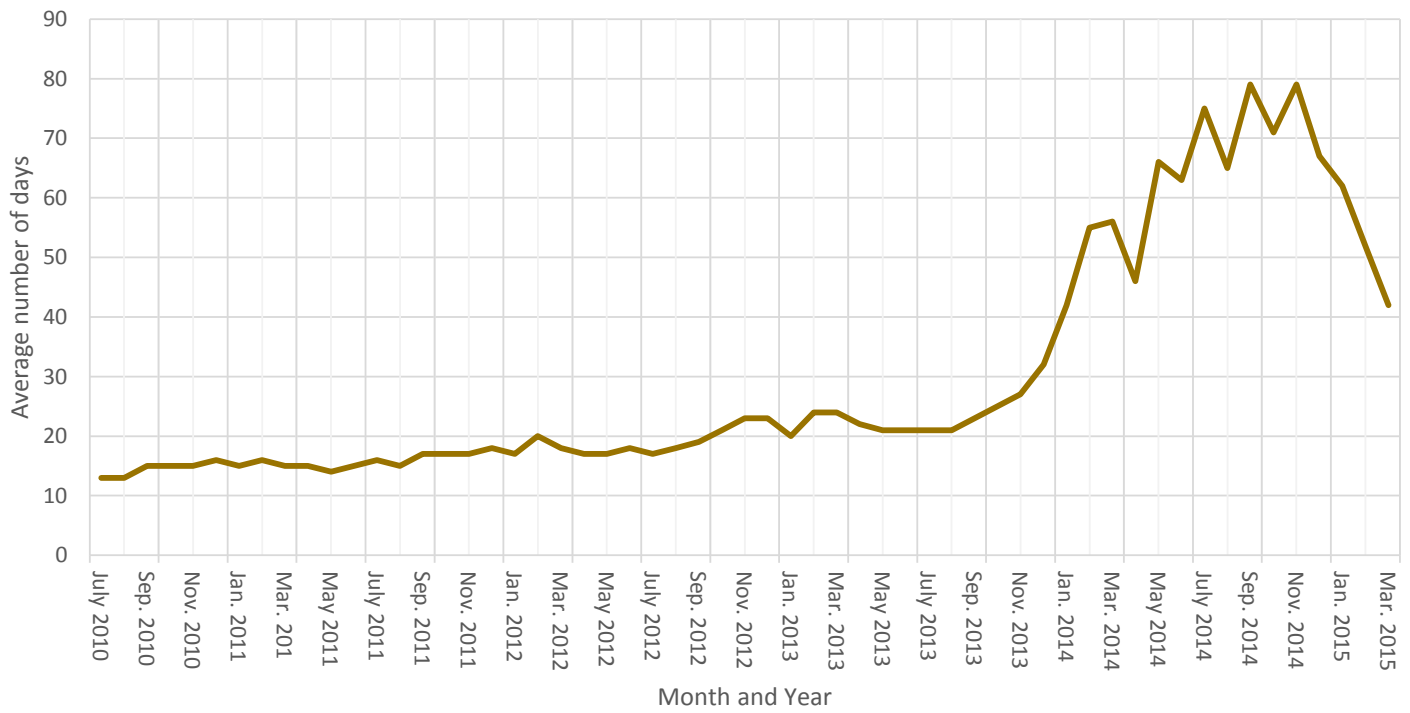
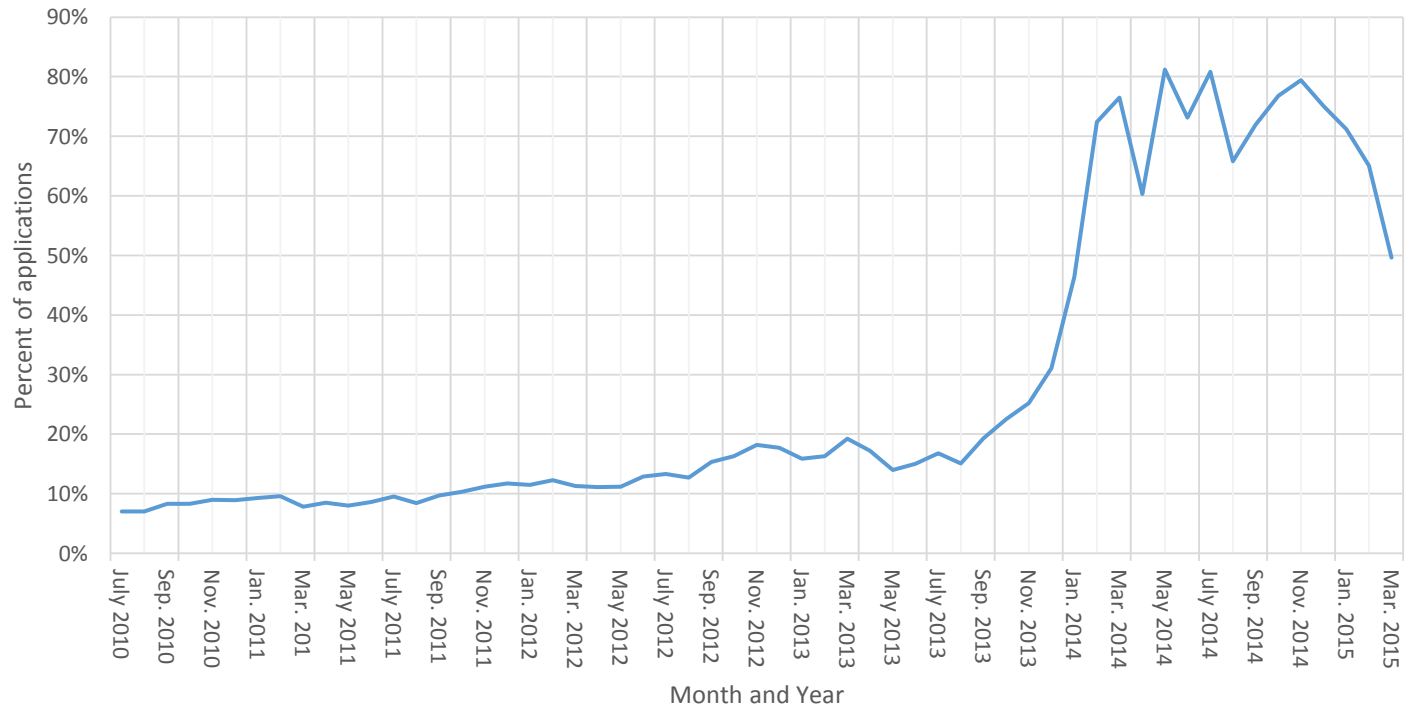


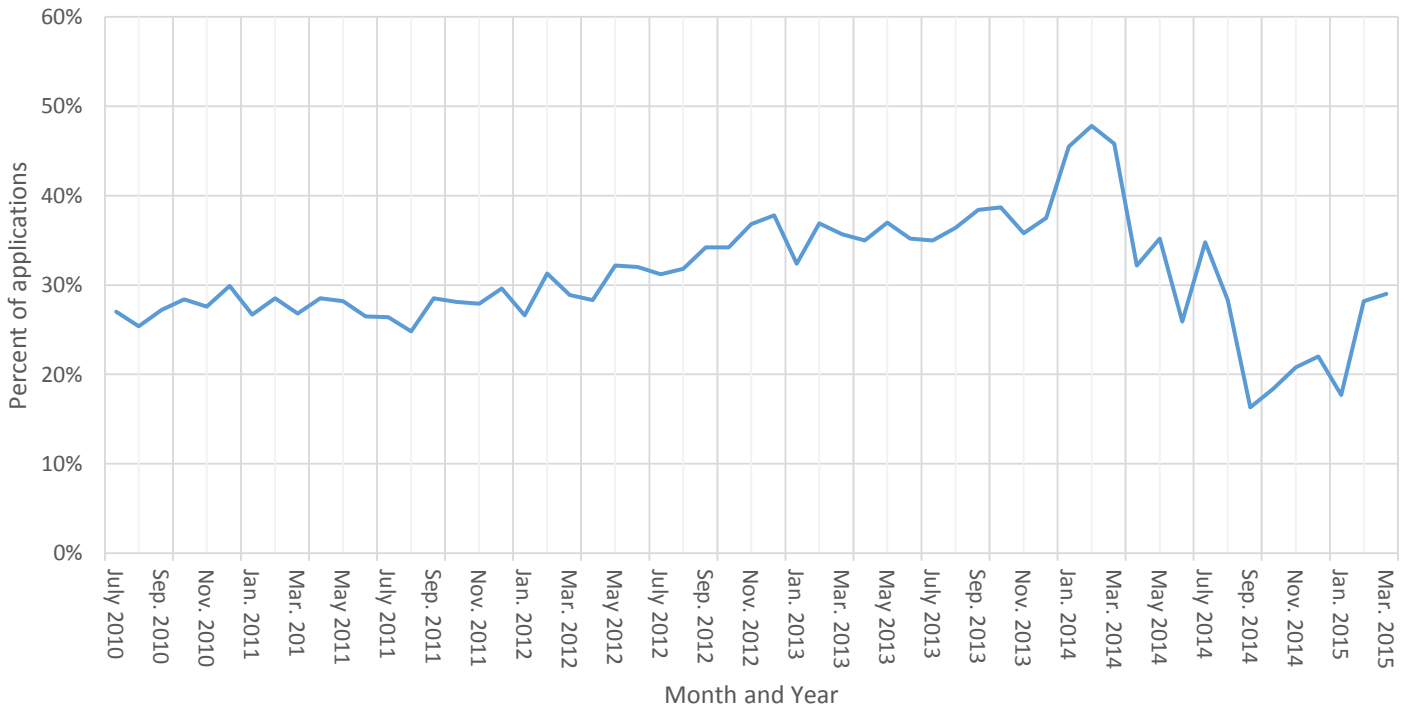
MOHealthNET Applications, July 2010-March 2015
Average number of days until application is processed



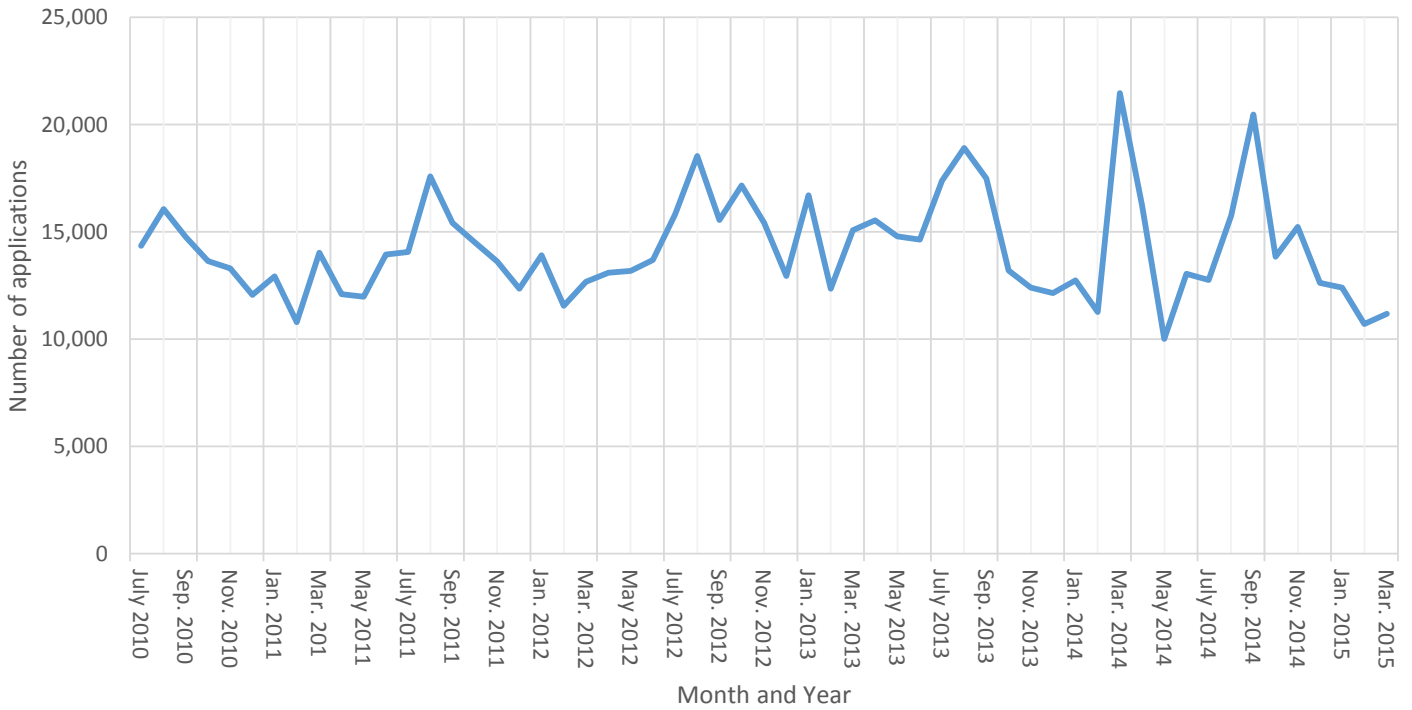
MOHealthNET Applications, July 2010-March 2015
Percent of applications taking 30 or more days to process



MOHealthNET Applications, July 2010-March 2015
Percent of applications rejected



MOHealthNET Applications, July 2010-March 2015
Number of applications received



FAMILY MO HEALTHNET APPLICATIONS, July 2010-March 2015

			Number of days until processed									
			Received	Approved	Rejected	Percent Rejected	Total Resolved	15 days or less	15-30 days	Over 30 days	Percent over 30 days	Average days
July	2010	July 2010	14,349	9,662	3,577	27.0%	13,239	8,556	3,759	924	7.0%	13
August	2010	Aug. 2010	16,052	10,560	3,591	25.4%	14,151	9,316	3,847	988	7.0%	13
September	2010	Sep. 2010	14,747	10,336	3,864	27.2%	14,200	8,664	4,353	1,183	8.3%	15
October	2010	Oct. 2010	13,628	9,416	3,743	28.4%	13,159	7,902	4,161	1,096	8.3%	15
November	2010	Nov. 2010	13,302	9,065	3,461	27.6%	12,526	7,734	3,663	1,129	9.0%	15
December	2010	Dec. 2010	12,062	8,493	3,628	29.9%	12,121	7,071	3,971	1,079	8.9%	16
January	2011	Jan. 2011	12,925	8,436	3,080	26.7%	11,516	7,160	3,290	1,066	9.3%	15
February	2011	Feb. 2011	10,794	7,156	2,854	28.5%	10,010	5,962	3,090	958	9.6%	16
March	2011	Mar. 201	14,029	9,653	3,539	26.8%	13,192	8,295	3,874	1,023	7.8%	15
April	2011	Apr. 2011	12,092	8,304	3,306	28.5%	11,610	7,030	3,588	992	8.5%	15
May	2011	May 2011	11,972	7,666	3,006	28.2%	10,672	6,622	3,192	858	8.0%	14
June	2011	June 2011	13,940	9,296	3,358	26.5%	12,654	7,798	3,773	1,083	8.6%	15
July	2011	July 2011	14,056	9,399	3,376	26.4%	12,775	7,664	3,892	1,219	9.5%	16
August	2011	Aug. 2011	17,578	11,587	3,813	24.8%	15,400	9,691	4,415	1,294	8.4%	15
September	2011	Sep. 2011	15,421	10,693	4,260	28.5%	14,953	8,365	5,136	1,452	9.7%	17
October	2011	Oct. 2011	14,502	9,806	3,831	28.1%	13,637	7,752	4,479	1,406	10.3%	17
November	2011	Nov. 2011	13,615	9,379	3,638	27.9%	13,017	7,481	4,081	1,455	11.2%	17
December	2011	Dec. 2011	12,350	8,631	3,630	29.6%	12,261	6,758	4,069	1,434	11.7%	18
January	2012	Jan. 2012	13,908	8,782	3,186	26.6%	11,968	7,204	3,390	1,374	11.5%	17
February	2012	Feb. 2012	11,549	7,717	3,516	31.3%	11,233	6,080	3,774	1,379	12.3%	20
March	2012	Mar. 2012	12,669	8,585	3,491	28.9%	12,076	6,943	3,774	1,359	11.3%	18
April	2012	Apr. 2012	13,086	8,108	3,200	28.3%	11,308	6,914	3,134	1,260	11.1%	17
May	2012	May 2012	13,181	8,067	3,833	32.2%	11,900	6,558	4,005	1,337	11.2%	17
June	2012	June 2012	13,687	8,445	3,970	32.0%	12,415	7,066	3,742	1,607	12.9%	18
July	2012	July 2012	15,799	8,998	4,084	31.2%	13,082	7,522	3,824	1,736	13.3%	17
August	2012	Aug. 2012	18,542	11,026	5,147	31.8%	16,173	8,987	5,140	2,046	12.7%	18
September	2012	Sep. 2012	15,547	9,503	4,934	34.2%	14,437	7,470	4,758	2,209	15.3%	19
October	2012	Oct. 2012	17,165	10,463	5,440	34.2%	15,903	8,297	5,021	2,585	16.3%	21
November	2012	Nov. 2012	15,409	9,421	5,496	36.8%	14,917	7,284	4,924	2,709	18.2%	23
December	2012	Dec. 2012	12,934	8,164	4,951	37.8%	13,115	6,512	4,288	2,315	17.7%	23
January	2013	Jan. 2013	16,711	9,338	4,478	32.4%	13,816	7,923	3,701	2,192	15.9%	20
February	2013	Feb. 2013	12,338	7,563	4,416	36.9%	11,979	5,904	4,123	1,952	16.3%	24
March	2013	Mar. 2013	15,078	9,013	5,008	35.7%	14,021	7,383	3,940	2,698	19.2%	24
April	2013	Apr. 2013	15,539	9,379	5,042	35.0%	14,421	7,767	4,174	2,480	17.2%	22
May	2013	May 2013	14,791	8,651	5,086	37.0%	13,737	7,125	4,694	1,918	14.0%	21
June	2013	June 2013	14,629	8,262	4,483	35.2%	12,745	6,784	4,052	1,909	15.0%	21
July	2013	July 2013	17,375	9,816	5,293	35.0%	15,109	7,941	4,628	2,540	16.8%	21
August	2013	Aug. 2013	18,903	10,171	5,826	36.4%	15,997	8,157	5,421	2,419	15.1%	21
September	2013	Sep. 2013	17,475	9,710	6,057	38.4%	15,767	6,912	5,812	3,043	19.3%	23
October	2013	Oct. 2013	13,190	8,978	5,665	38.7%	14,643	5,595	5,751	3,297	22.5%	25
November	2013	Nov. 2013	12,390	7,177	3,997	35.8%	11,174	4,614	3,740	2,820	25.2%	27
December	2013	Dec. 2013	12,148	7,966	4,783	37.5%	12,749	4,769	4,011	3,969	31.1%	32
January	2014	Jan. 2014	12,732	5,539	4,617	45.5%	10,156	1,483	3,962	4,711	46.4%	42
February	2014	Feb. 2014	11,268	5,113	4,679	47.8%	9,792	1,699	1,002	7,091	72.4%	55
March	2014	Mar. 2014	21,460	7,091	5,984	45.8%	13,075	1,635	1,434	10,006	76.5%	56
April	2014	Apr. 2014	16,234	7,857	3,739	32.2%	11,596	1,705	2,896	6,995	60.3%	46
May	2014	May 2014	9,999	6,682	3,627	35.2%	10,309	1,052	888	8,369	81.2%	66
June	2014	June 2014	13,045	10,876	3,804	25.9%	14,680	2,027	1,915	10,738	73.1%	63
July	2014	July 2014	12,753	8,698	4,652	34.8%	13,350	1,365	1,198	10,787	80.8%	75
August	2014	Aug. 2014	15,756	11,780	4,660	28.3%	16,440	2,869	2,753	10,818	65.8%	65
September	2014	Sep. 2014	20,461	14,899	2,902	16.3%	17,801	2,356	2,652	12,793	71.9%	79
October	2014	Oct. 2014	13,845	11,344	2,550	18.4%	13,894	1,438	1,783	10,673	76.8%	71
November	2014	Nov. 2014	15,231	8,249	2,169	20.8%	10,418	1,544	601	8,273	79.4%	79
December	2014	Dec. 2014	12,620	7,448	2,102	22.0%	9,550	1,568	810	7,172	75.1%	67
January	2014	Jan. 2015	12,397	11,003	2,372	17.7%	13,375	2,247	1,600	9,528	71.2%	62
February	2015	Feb. 2015	10,698	8,345	3,285	28.2%	11,630	1,705	2,354	7,571	65.1%	52
March	2015	Mar. 2015	11,180	8,787	3,594	29.0%	12,381	3,737	2,498	6,146	49.6%	42

SOURCE: Missouri Family Support Division, MO HealthNet Division, "MONTHLY MANAGEMENT REPORTS", Table 10, July 2010-March 2015.