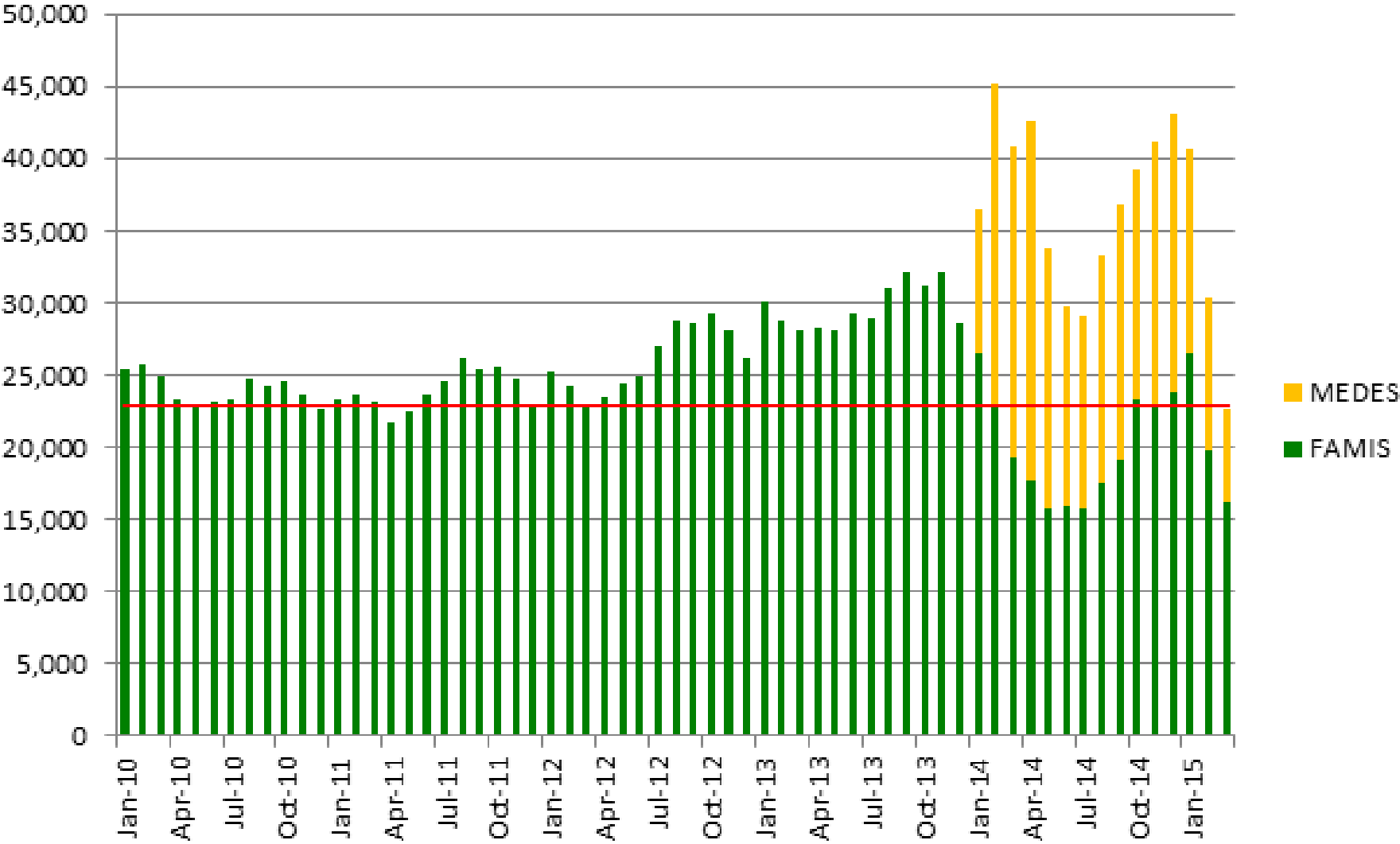
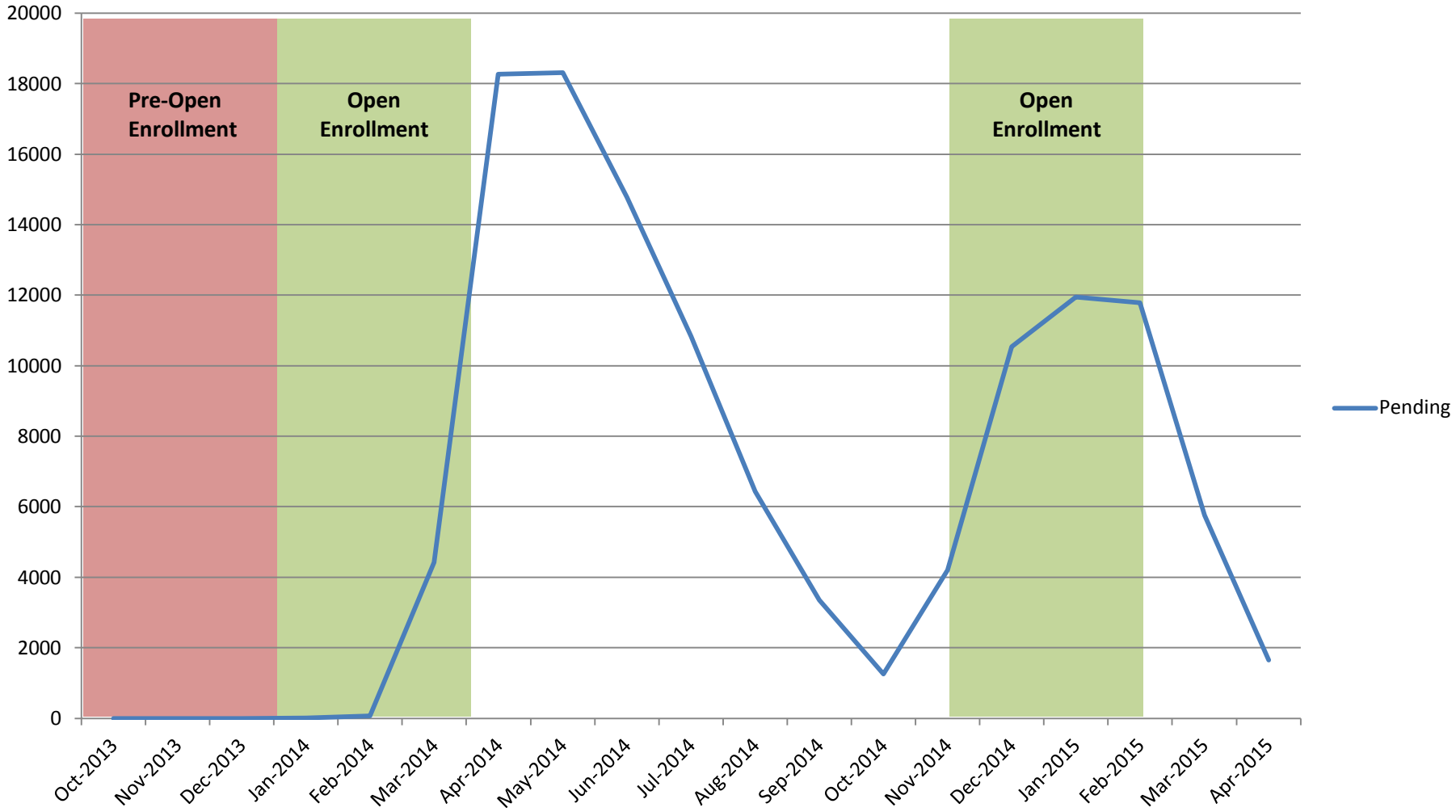


MO HealthNet (Medicaid) Applications Pending

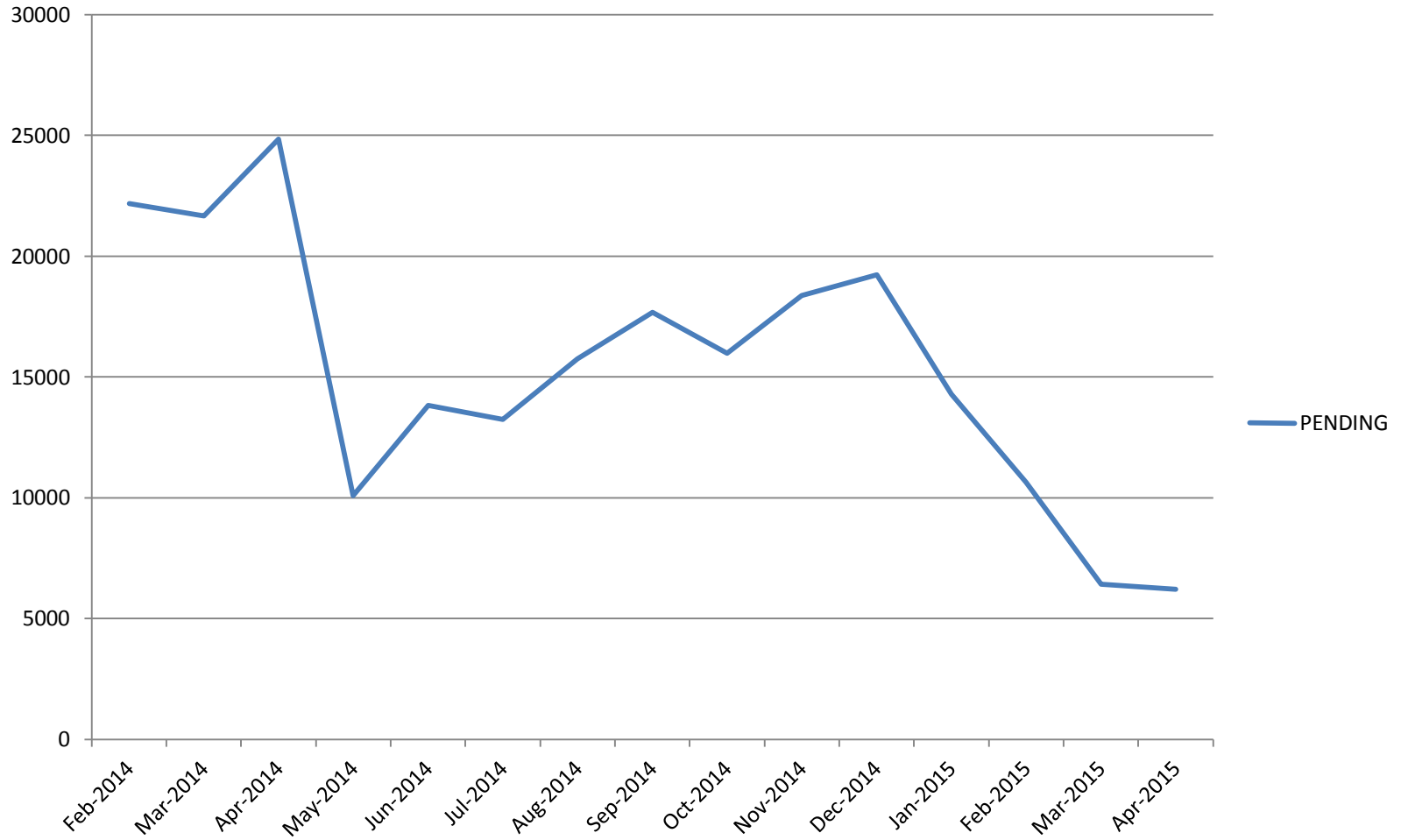
End of Month Pended Applications by System



FFM Applications Pending

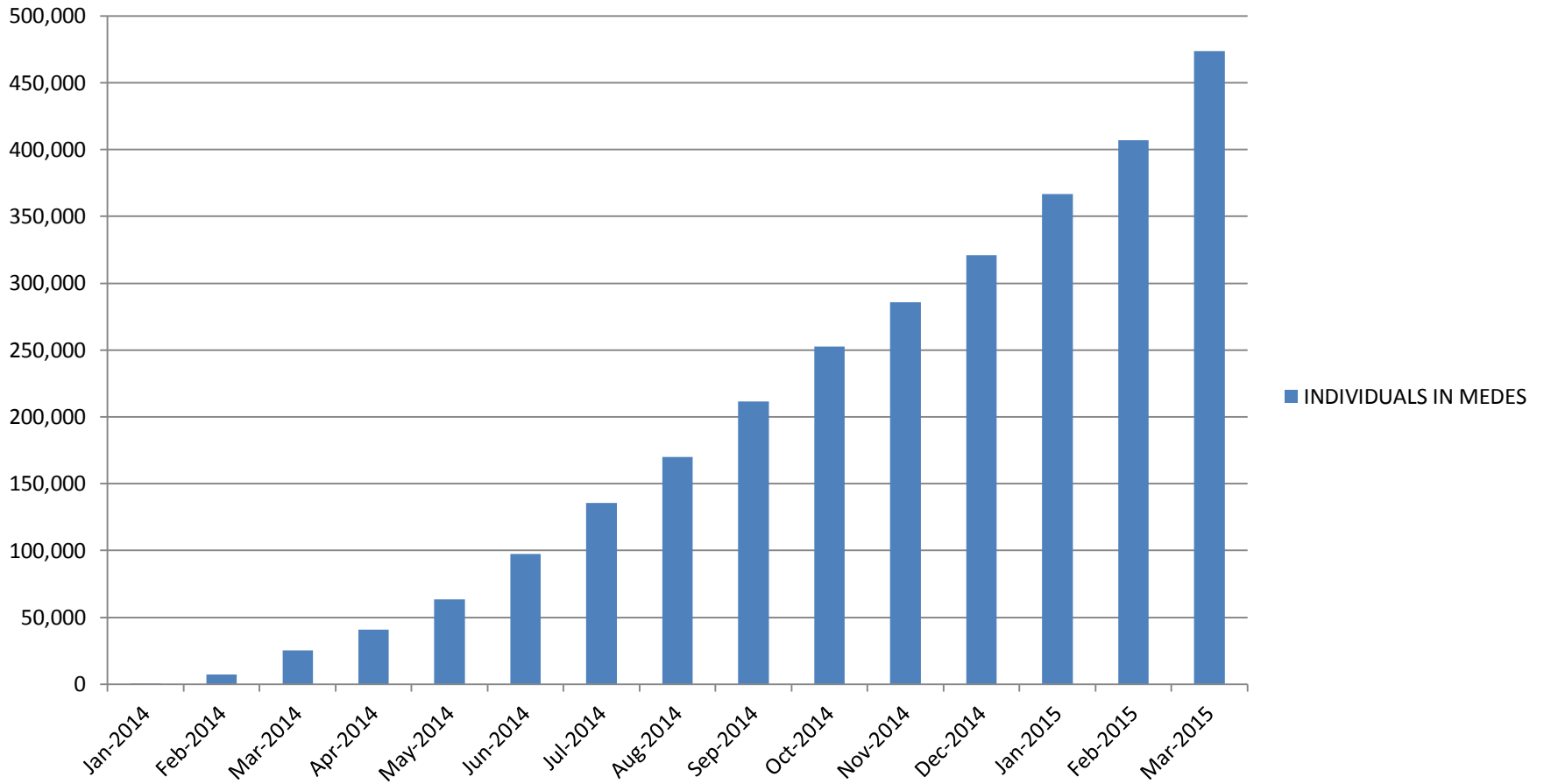


MAGI Applications Pending



MAGI Participants Managed in MEDES

INDIVIDUALS IN MEDES



MEDES – Other Information

- 82,943 FFMs have been received since inception
 - Approved = 16,596 (20%)
 - Rejected = 64,791 (79%)
 - Pending = 1,556

- Of applications received in March
 - 57% online or by telephone center
 - 43% by paper application

- On average (*January through March 2015*)
 - 18,133 applications received each month
 - 22,532 processed each month