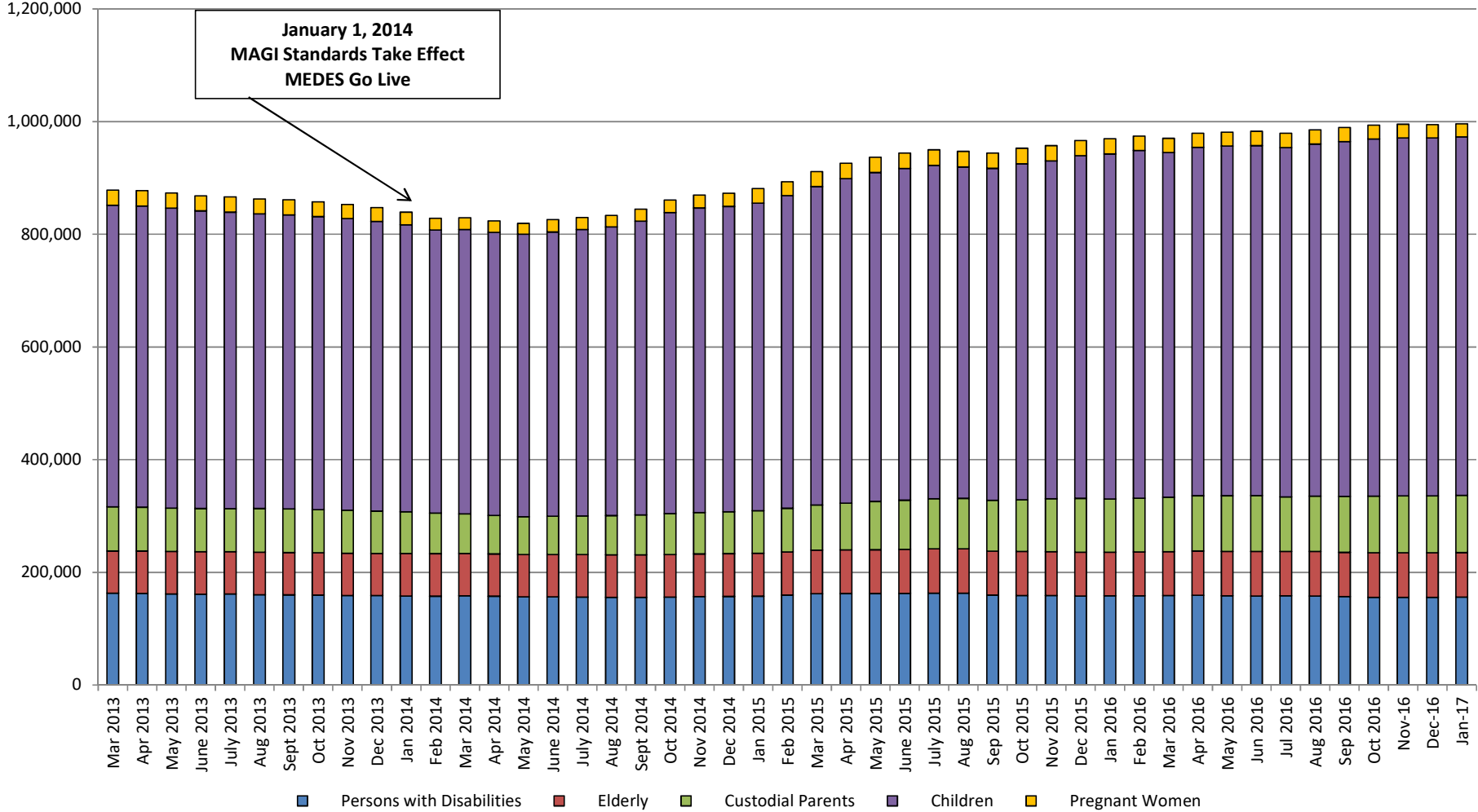
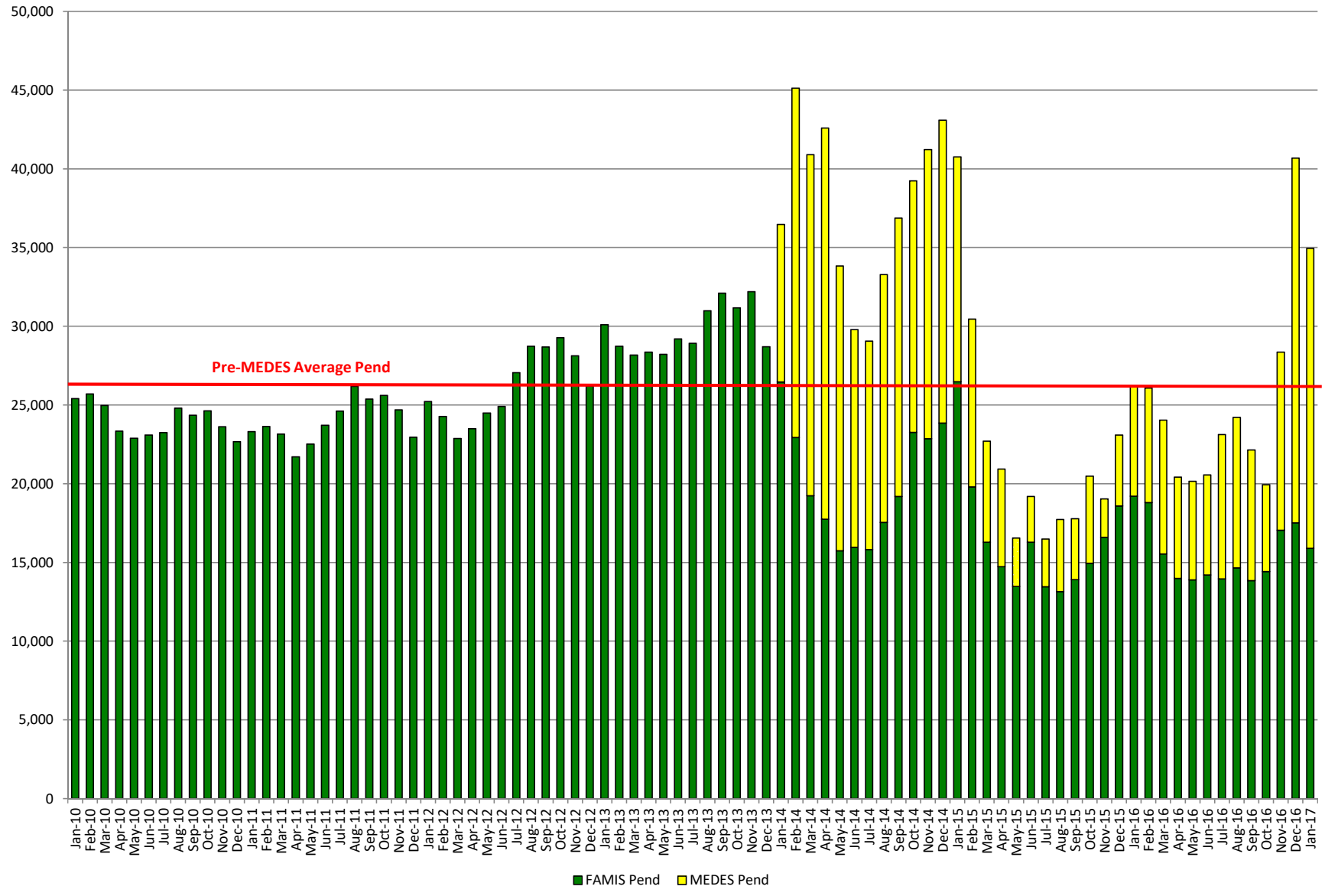


Medicaid Caseload



Pended Medicaid Applications





	Participants as of June 2010	Participants as of June 2014	Participants as of January 2017	Change Since June 2010	Percentage of January 2017 Participants	Current Income Eligibility Maximums <small>(Show as a Percentage of Poverty Level)</small>	Budgeted Participants by June 2017
Children	538,175	504,582	636,279	98,104	63.9%	300%*	620,836
Persons with Disabilities	165,185	156,595	156,255	(8,930)	15.7%	85%	159,987
Custodial Parents	81,660	67,829	101,625	19,965	10.2%	TANF level <small>(approximately 19%)</small>	95,746
Seniors	77,917	75,122	78,773	856	7.9%	85%	78,460
Pregnant Women	28,254	21,846	23,092	(5,162)	2.3%	185%	26,547
Total	891,191	825,974	996,024	104,833			981,576
Women's Health Services	49,901	67,616	69,215	19,314		185%	68,975
Managed Care Enrollment	421,756	388,857	506,238	84,482			

*Families with gross income above 150% of the federal poverty level are required to pay a monthly premium for coverage of their children.

Charts Legend

DSS: MO Department of Social Services (i.e. General MAGI applications)

FAMIS: Family Assistance Information Management Systems

FFM: Federally Facilitated Marketplace

MAGI: Modified Adjusted Gross Income

MEDES: Missouri Eligibility Determination and Enrollment System

MHABD (ADM): MO HealthNet Eligibility for Persons Who are Aged (age 65 and over), Blind, or Disabled