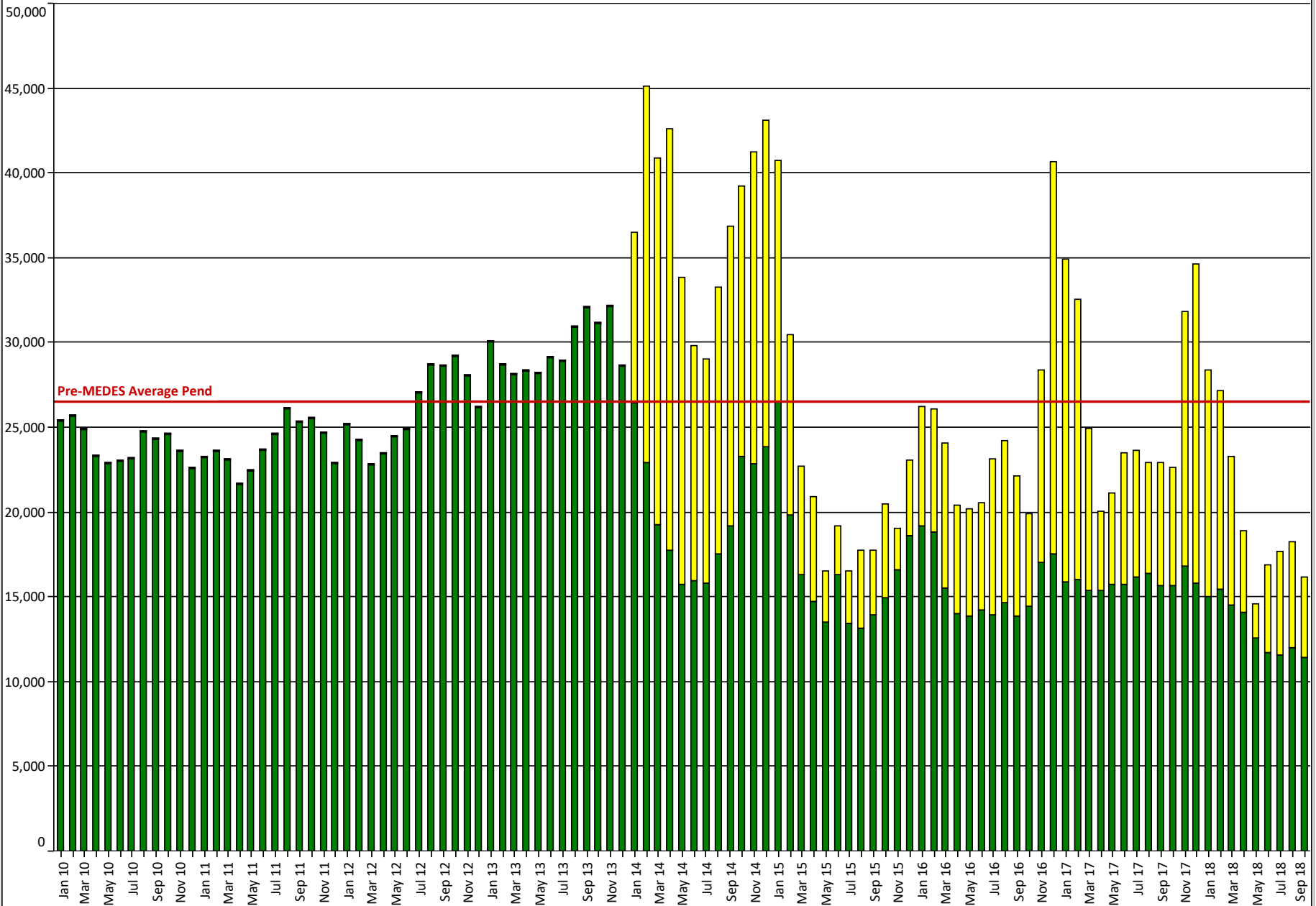
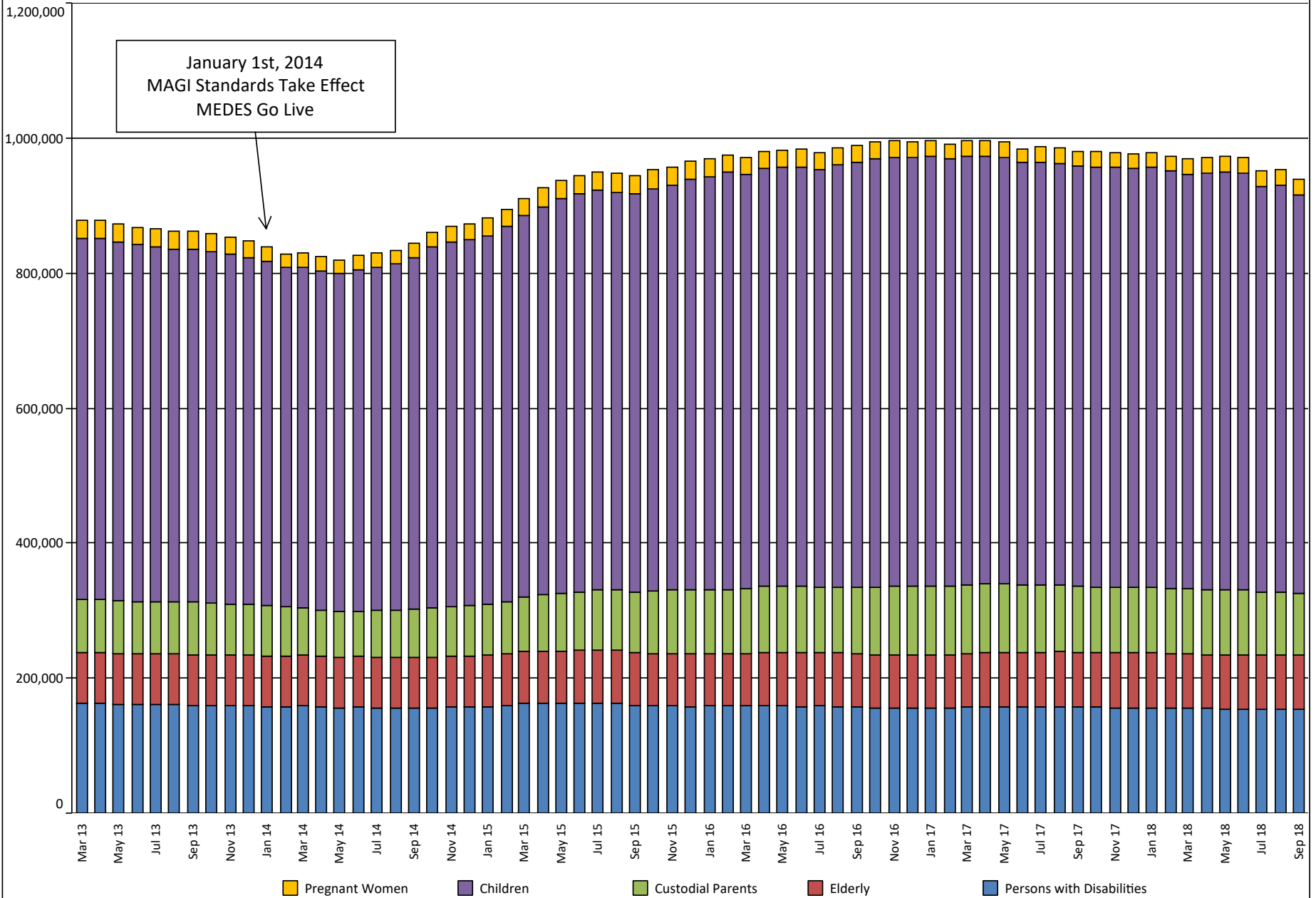


Pended Medicaid Applications



Medicaid Caseload



January 1st, 2014
MAGI Standards Take Effect
MEDES Go Live



	Participants as of June 2010	Participants as of June 2014	Participants as of September 2018	Change Since June 2010	Current Income Eligibility Maximums <small>(Show as a Percentage of Poverty Level)</small>
Children	538,175	504,582	590,770	52,595	300%*
Persons with Disabilities	165,185	156,595	153,098	(12,087)	85%
Custodial Parents	81,660	67,829	91,545	9,885	TANF level (approximately 19%)
Seniors	77,917	75,122	80,362	2,445	85%
Pregnant Women	28,254	21,846	23,387	(4,867)	185%
Total	891,191	825,974	939,162	47,971	
Women's Health Services	49,901	67,616	58,487	8,586	185%
Managed Care Enrollment	421,756	388,857	677,621	255,865	

*Families with gross income above 150% of the federal poverty level are required to pay a monthly premium for coverage of their children.

Source: Missouri Department of Social Services, Family Support Division/MO HealthNet Division, Monthly Management Report

Charts Legend

DSS: MO Department of Social Services (i.e. General MAGI applications)

FAMIS: Family Assistance Information Management Systems

FFM: Federally Facilitated Marketplace

MAGI: Modified Adjusted Gross Income

MEDES: Missouri Eligibility Determination and Enrollment System

MHABD (ADM): MO HealthNet Eligibility for Persons Who are Aged (age 65 and over), Blind, or Disabled