



CHIROPRACTOR PROGRAM

October 2023

Presented by Jackie Bollinger



Chiropractic Medicine



Covered Services

Chiropractic services are limited to examinations, diagnoses, adjustments, manipulations and treatments of malposition articulations, and structures of the body provided by licensed chiropractic physicians practicing within their scope of practice.

Eligible Providers

Providers must be licensed to practice chiropractic medicine by complying with the provisions of [Chapter 331, RSMo.](#)

Providers must have signed a participation agreement to provide chiropractic services under the MO HealthNet program.

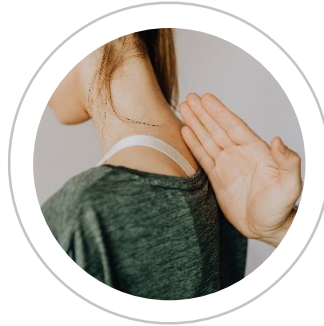
Chiropractic Medicine



Eligibility

Participants must be MO HealthNet eligible.

Verify eligibility in [eMOMED](#) or by calling (573) 751-2896



Limitations

Participants may receive up to 20 visits per rolling year for chiropractic services.



Applicability

Managed Care enrolled providers should contact their Managed Care Organizations for questions regarding chiropractic services billing.

Managed Care Plans



Healthy Blue

(833) 388-1407
[Website](#)



Home State Health

(855) 694-4663
[Email](#)
[Website](#)



United Healthcare

(866) 292-0359
[Email](#)
[Website](#)



Show Me Healthy Kids

(877) 236-1020
[Email](#)
[Website](#)



If providers are unable to resolve a Managed Care issue directly with the plan, contact:

MHD.MCCommunications@dss.mo.gov

Covered CPT Codes



Procedure Code	Service	Reimbursement Rate
99201	New Patient – Office or other outpatient visit for the evaluation and Management of a new patient	Consult the MO HealthNet on-line Fee Schedule for current allowed amounts
99202	New Patient – Office or other outpatient visit for the evaluation and management of a new patient	Consult the MO HealthNet on-line Fee Schedule for current allowed amounts
99203	New Patient – Office or other outpatient visit for the evaluation and management of a new patient	Consult the MO HealthNet on-line Fee Schedule for current allowed amounts
99204	New Patient – Office or other outpatient visit for the evaluation and management of a new patient	Consult the MO HealthNet on-line Fee Schedule for current allowed amounts

Covered CPT Codes



Procedure Code	Service	Reimbursement Rate
99205	New Patient – Office or other outpatient visit for the evaluation and management of a new patient	Consult the MO HealthNet on-line Fee Schedule for current allowed amounts
99211	Office or other outpatient visit for the evaluation and management of a established patient	Consult the MO HealthNet on-line Fee Schedule for current allowed amounts
99212	Office or other outpatient visit for the evaluation and management of a established patient	Consult the MO HealthNet on-line Fee Schedule for current allowed amounts
99213	Office or other outpatient visit for the evaluation and management of a established patient	Consult the MO HealthNet on-line Fee Schedule for current allowed amounts

Covered CPT Codes



Procedure Code	Service	Reimbursement Rate
99214	Office or other outpatient visit for the evaluation and management of a established patient	Consult the MO HealthNet on-line Fee Schedule for current allowed amounts
99215	Office or other outpatient visit for the evaluation and management of a established patient	Consult the MO HealthNet on-line Fee Schedule for current allowed amounts
97012	Traction, mechanical	Consult the MO HealthNet on-line Fee Schedule for current allowed amounts
97014	Electrical stimulation (unattended)	Consult the MO HealthNet on-line Fee Schedule for current allowed amounts
97032	Application of a modality to one or more areas; electrical stimulation (manual), each 15 minutes	Consult the MO HealthNet on-line Fee Schedule for current allowed amounts

Covered CPT Codes



Procedure Code	Service	Reimbursement Rate
97035	Chiropractic manipulative treatment (CMT); spinal, one to two regions	Consult the MO HealthNet on-line Fee Schedule for current allowed amounts
98940	Chiropractic manipulative treatment (CMT); spinal, one to two regions	Consult the MO HealthNet on-line Fee Schedule for current allowed amounts
98941	Spinal, three to four regions	Consult the MO HealthNet on-line Fee Schedule for current allowed amounts
98942	Spinal, five regions	Consult the MO HealthNet on-line Fee Schedule for current allowed amounts
98943	Extra spinal, one or more regions	Consult the MO HealthNet on-line Fee Schedule for current allowed amounts

Provider Enrollment

If a provider is not already enrolled with MHD, an [enrollment application](#) must be submitted.

Any questions regarding enrollment should be emailed to:

MMAC.ProviderEnrollment@dss.mo.gov

CONTACT INFORMATION



Provider Communications (Wipro)
(573) 751-2896 or via [eMOMED](#)

MHD Education and Training instructs providers on navigating provider resources, proper billing methods and procedures for claim filing via eMOMED.



(573) 751-6683



MHD.Education@dss.mo.gov



[https://www.facebook.com/
MOSocialServices/](https://www.facebook.com/MOSocialServices/)